

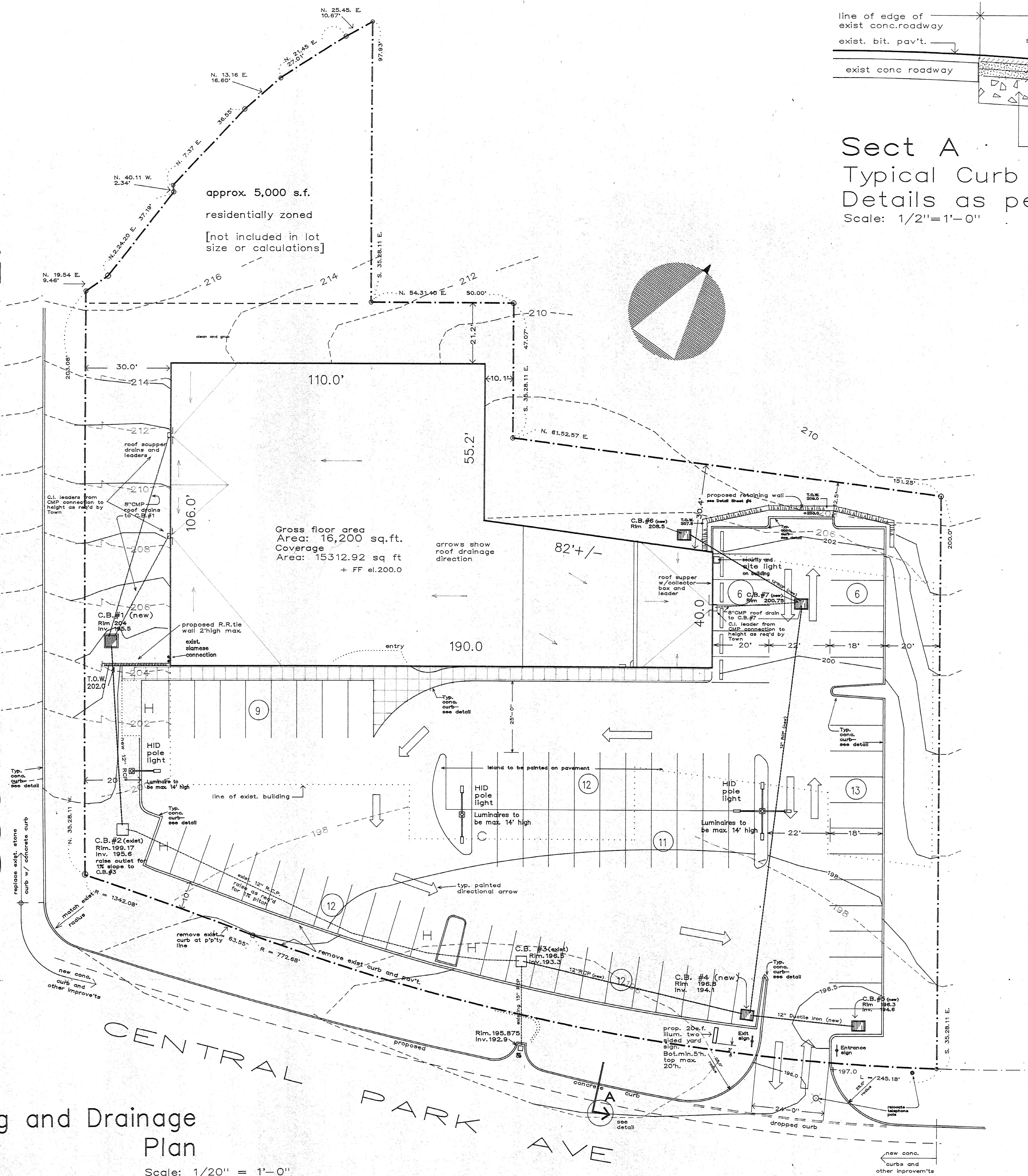
SOUTH WASHINGTON AVE.

CENTRAL PARK AVE.

Lighting and Drainage Plan

Scale: 1/20" = 1'-0"

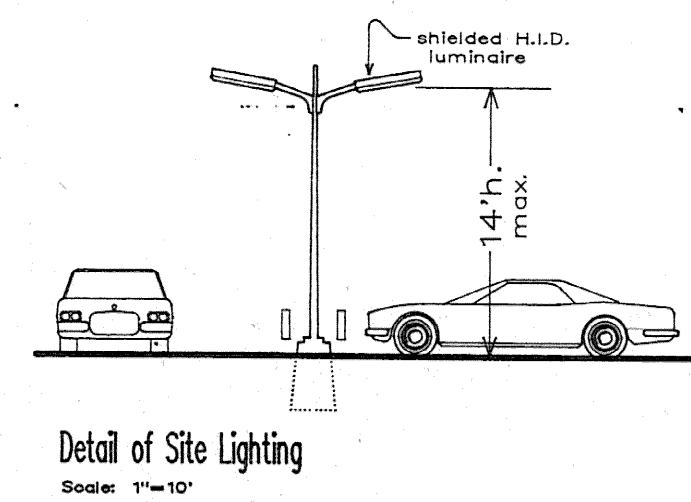
Data for this Plot Plan taken from a survey map made by Aristotile Bourmazos, P.C. Surveyors dated Mar. 5, 1990.



Sect A
Typical Curb and Shoulder Details as per N.Y.S.D.O.T.
Scale: 1/2" = 1'-0"

Sanitary sewer note:

There are two separate sanitary sewer connections serving the existing structure. The northernmost connection is to be abandoned. It will be terminated and plugged in the street at the sewer main.



Proposed **NEWMARK & LEWIS** Appliance Store
111 Central Park Avenue Greenburgh, New York

Prepared for
Broadway Corp.
Hicksville, N.Y.

Anthony Piazza Jr., Inc.
Construction Managers
155 Lafayette Avenue - 2nd
N. WHITE PLAINS, NEW YORK 10603
(914) 686-8815

2.21.90	9.20.90
Revised	
3.2.90	
3.15.90	
6.5.90	
8.3.90	

CONSTRUCTION CONSULTANT
Anthony Piazza, Jr., Inc.
155 Lafayette Ave.
North White Plains, N.Y. 10603

STRUCTURAL ENGINEER
Edward Brunner, P.E.
103 Clinton Street
White Plains, New York 10603

SITE ENGINEER
Philip A. Arnicone, PE, P.C.
718 North Broadway
Yonkers, New York 10703

Robert William Pollock, Inc.
Architects
1000 White Plains Road
Tarrytown, N.Y. 10591