

220 N. Smith Street
Suite 110
220 N. Smith Street, Palatine, IL 60067



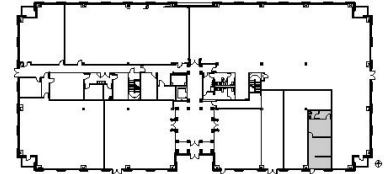
DETAILS

Square Feet: 693 S.F.
Net Rent: \$14.00/S.F.
OP. Expense: \$6.27/S.F.
Tax: \$7.40/S.F.
Gross Rent: \$27.67/S.F.

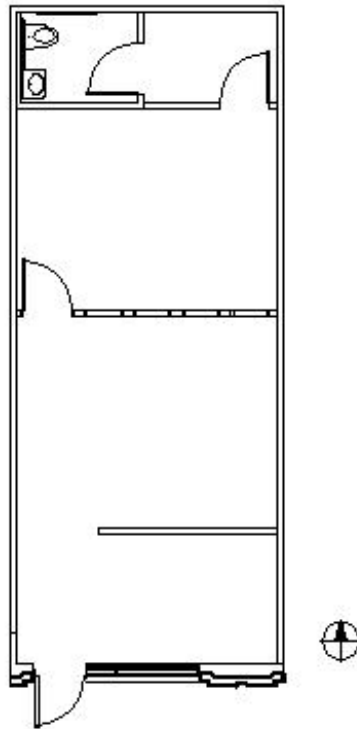
SUITE FEATURES

- Will Vacate
- High Retail Visibility 1st Floor Space
- High Ceilings Throughout Space
- Reception
- Large Open Area
- Conference Room
- Small Storage Room
- Private Restroom
- Great Downtown Palatine Location
- Adjacent to Metra Station
- Connected Parking Deck

FIRST FLOOR PLAN



SPACE PLAN



HAMILTON PARTNERS - Sponsoring Broker

Brian Lunt

✉ blunt@hpre.com

P 847-459-2249

F 847-459-8918