

NOW LEASING

RENTAL RATES

\$9 RSF
Modified Gross
(Tenant to pay Utilities & Janitorial)

SPACE AVAILABLE

1,115 RSF

RETAIL SPACE

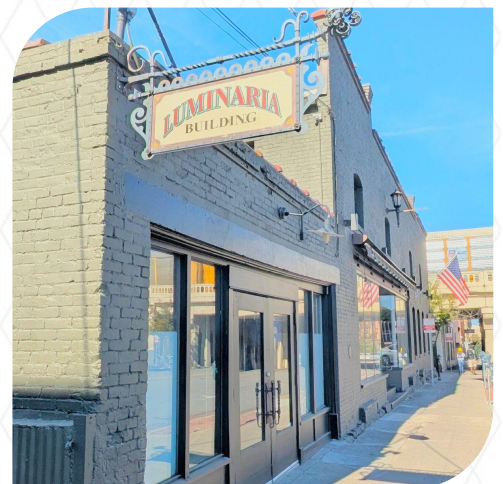
154 S Madison St, Ste 101, Spokane, WA 99201

Located in the heart of the Brewery District, this character-filled building has a history of successful businesses, including a salon, banquet hall, and restaurant. With high ceilings, exposed brick, and original beams, the space attracts creatives and entrepreneurs. An entertainment collective is upstairs; we're seeking a complementary user for the ground floor.

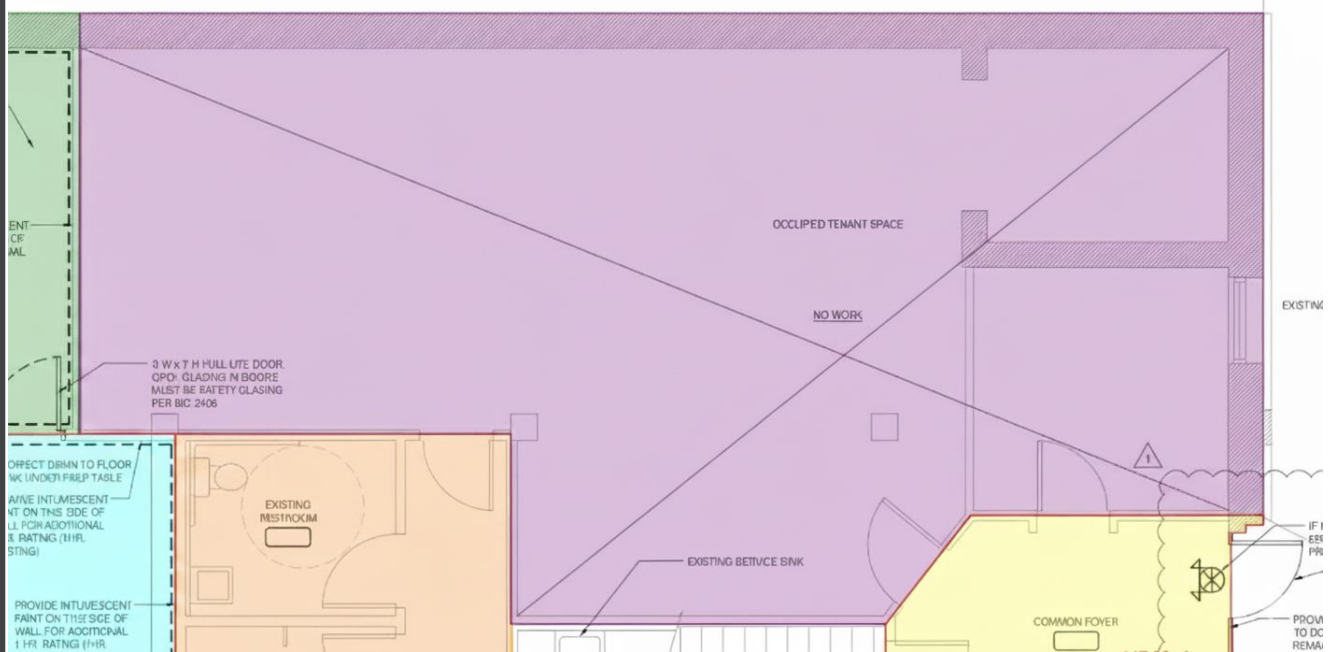
AMENITIES

- ✓ Exposed Brick
- ✓ Wood Floors
- ✓ Shared Patio
- ✓ 2 Offices
- ✓ Open Retail/Bullpen
- ✓ Plumbing Available

Information is deemed reliable but not guaranteed. Broker not responsible for changes errors or commissions. All square footages are for conveniences only. All information should be verified prior to leasing or purchasing property.



FLOOR PLANS



SPACE

1,115 RSF

- 2 Offices
- Outdoor Patio
- Exposed Brick

Information is deemed reliable but not guaranteed. Broker not responsible for changes errors or commissions. All square footages are for conveniences only. All information should be verified prior to leasing or purchasing property.

ADDITIONAL PHOTOS



Information is deemed reliable but not guaranteed. Broker not responsible for changes errors or commissions. All square footages are for conveniences only. All information should be verified prior to leasing or purchasing property.