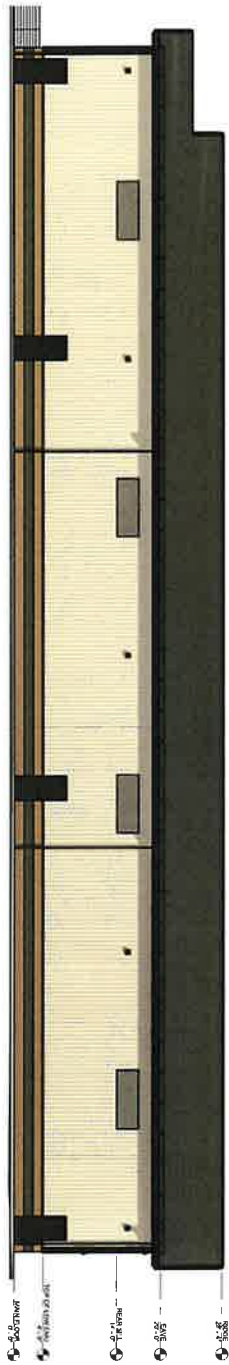






EAST ELEVATION  
Scale: 1/8" = 1'-0"



WEST ELEVATION  
Scale: 1/8" = 1'-0"

PRELIMINARY  
NOT FOR  
CONSTRUCTION  
7/3/2025



ENGINEERING, INC.  
10220 NE 10TH ST.  
REDMOND, OREGON 97056  
TEL: 503-752-1100  
WWW.L&BENGINEERING.COM

LOTS 2&3, FAIRGROUNDS BUSINESS PARK  
UNADDRESSED  
REDMOND, OREGON

ELEVATIONS

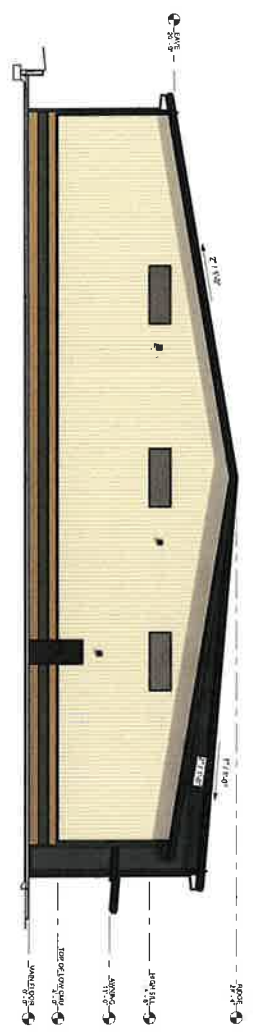
REV	DATE	DESCRIPTION

A2

19-215



NORTH ELEVATION



SOUTH ELEVATION

PRELIMINARY  
CONSTRUCTION  
7/3/2025



ENGINEERING, INC.  
10000 SW 10TH AVE  
SUITE 100  
REDMOND, OREGON 97056  
PHONE: 503-754-1100  
FAX: 503-754-1101

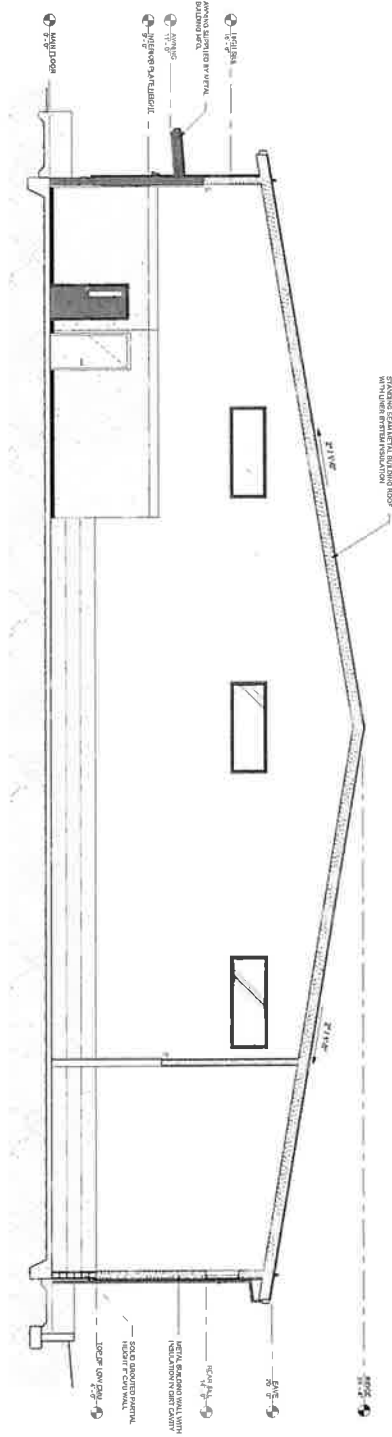
LOTS 2&3, FAIRGROUNDS BUSINESS PARK  
UNADDRESSED  
REDMOND, OREGON

ELEVATIONS

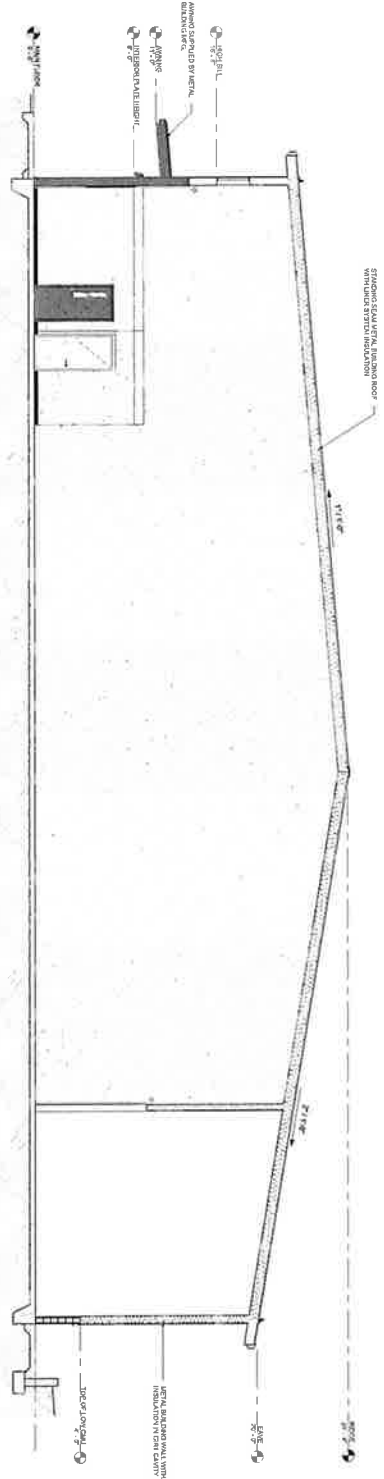
REVISION	DATE

A2.1  
19-25





1. BUILDING SECTION  
3/16" = 1'-0"



2. BUILDING SECTION  
3/16" = 1'-0"

PRELIMINARY  
- NOT FOR  
CONSTRUCTION  
7/3/2025



ENGINEERING, INC.  
1000 NE 4TH ST  
REDFORD, OREGON 97756  
PH: 503.251.1234  
WWW.LANDB.COM

LOTS 2&3, FAIRGROUNDS BUSINESS PARK  
UNADDRESSED  
REDFORD, OREGON

SECTIONS

NO.	REVISION

A3

19-25



