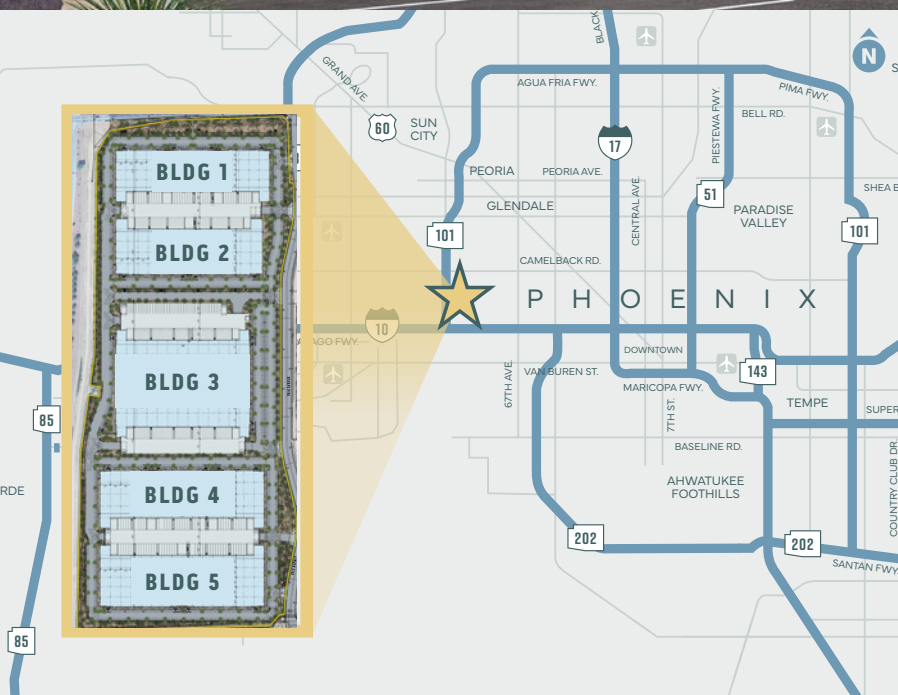


WEST 101 LOGISTICS CENTER

BUILDING 3: ±311,853 SF
SEC LOOP 101 & INDIAN SCHOOL RD | PHOENIX, AZ

DELIVERING
**SUMMER
2026**



PRIMARY CONTACT:

COOPER FRATT, SIOR
+1 602 735 5037
cooper.fratt@cbre.com

SECONDARY CONTACT:

TANNER FERRANDI
+1 602 735 5624
tanner.ferrandi@cbre.com

TEAM MEMBERS:

JOHN WERSTLER, SIOR
+1 602 735 5504
john.werstler@cbre.com

CONNIE NELSON
+1 602 735 1994
connie.nelson@cbre.com

CBRE

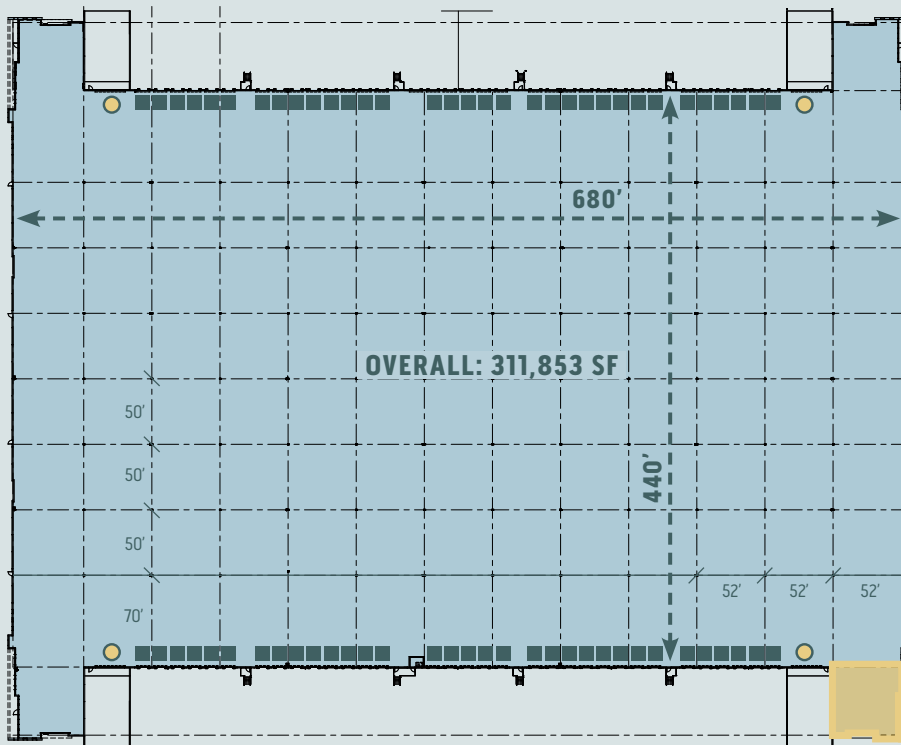
Trammell Crow Company

© 2026 CBRE, Inc. All rights reserved. This information has been obtained from sources believed reliable, but has not been verified for accuracy or completeness. You should conduct a careful, independent investigation of the property and verify all information. Any reliance on this information is solely at your own risk. CBRE and the CBRE logo are service marks of CBRE, Inc. All other marks displayed on this document are the property of their respective owners, and the use of such logos does not imply any affiliation with or endorsement of CBRE. Photos herein are the property of their respective owners. Use of these images without the express written consent of the owner is prohibited.

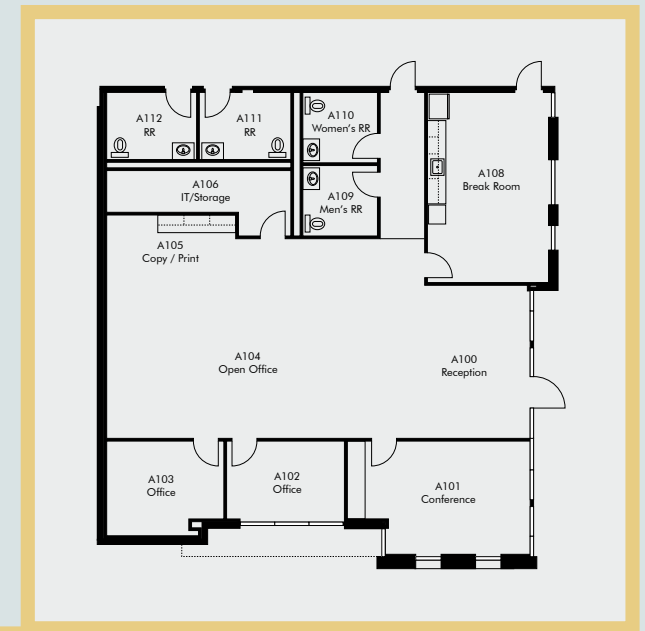
BUILDING 3 FLOOR PLAN & SPEC OFFICE



● GRADE LEVEL
 ■ DOCK-HIGH



SPEC OFFICE



BUILDING 3 SPECS

TOTAL BUILDING SIZE	±311,853 SF	PARKING	352 Auto	LIGHTING	LED
DIVISIBLE	to ±150,000 SF	POWER	6,600 Amps 277/480V	COOLING	100% HVAC
CLEAR HEIGHT	±36'	DOCK HIGH DOORS	66	SPRINKLER SYSTEM	ESFR K-17
SPEC OFFICE	±2,516 SF	GRADE LEVEL DOORS	4 (2 Oversized End-Cap Doors)	TRUCK COURT	Concrete, Fully Secured and Gated