

LAND FOR SALE

4.42 Acres MPUD with C2 Uses

31725 County Rd 52
San Antonio, FL 33576

Brent Nye
Partner
C: 813.997.3333
brent@nyecommercial.com

Cody Brightwell
Managing Director
C: 440.376.1006
cody@nyecommercial.com



4.42 Acres

31725 County Rd 52, San Antonio, FL 33576



PROPERTY DESCRIPTION

An exceptional opportunity located in one of the most desirable up-and-coming areas in **Pasco County**. Situated on 4 Acres MOL of **flat, buildable land**, this property is primed and **ready for development**. As the area continues to experience growth, with the addition of new subdivisions and roads, this location has emerged as the prime spot for potential development. Site is **zoned MPUD** with **C2 uses**. Conveniently located with easy access to I-75 and HWY 98 to Lakeland, this property offers excellent connectivity and accessibility for both residents and businesses.

PROPERTY HIGHLIGHTS

- **All Lots** - MPUD Zoned with C2 Uses
- **Utilities Stubbed** to the interior roadway
- **Lots 1-3** - Master retention in place
- **Interstate 75** - 2 Miles to the East
- **Surrounded by** - \$2.41B Double Branch Mixed-Use Development 1,000 Acres Under Construction, \$300M Target Fulfillment Center & \$150M Amazon Robotic Center

OFFERING SUMMARY

Price	\$1,000,000 - \$1,750,000
Zoning:	MPUD with C2 Uses
Utilities:	Stubbed to the Interior Roadway
Lot Size:	0.87-1.44 Acres
Lot 1:	0.90 Acres
Lot 2:	0.87 Acres
Lot 3:	1.21 Acres
Lot 4:	1.44 Acres

Brent Nye

Partner
C: 813.997.3333
brent@nyecommercial.com

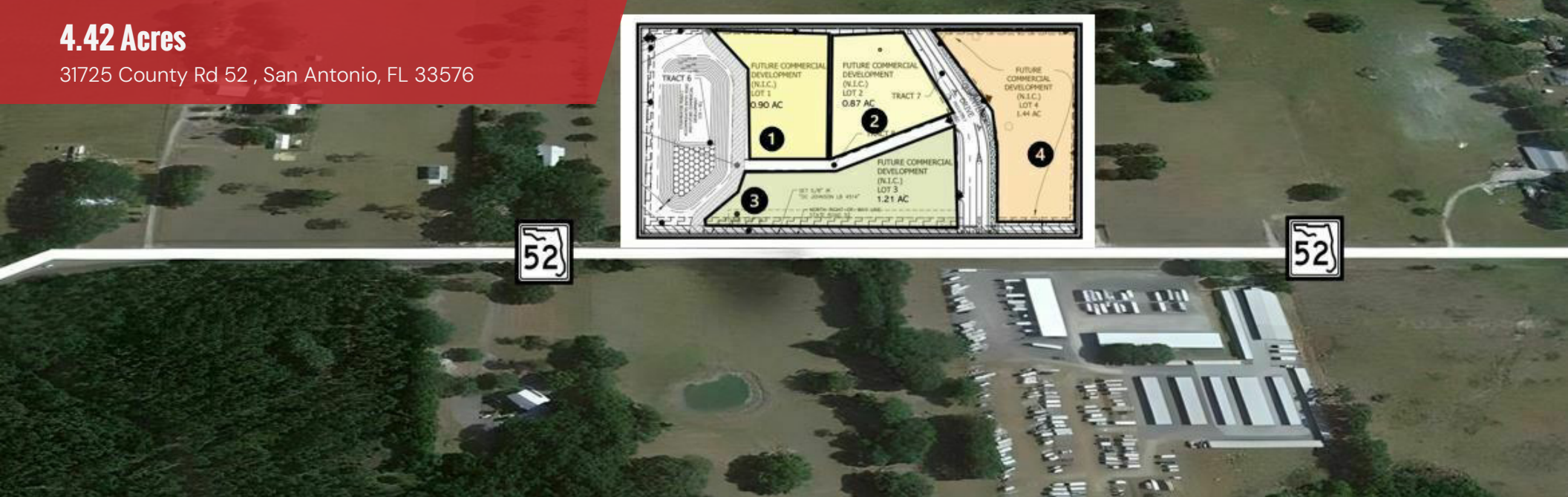
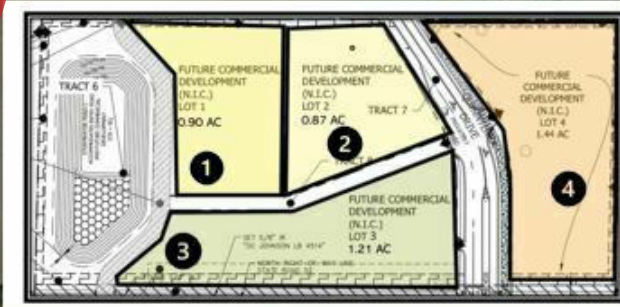
Cody Brightwell

Managing Director
C: 440.376.1006
cody@nyecommercial.com



4.42 Acres

31725 County Rd 52, San Antonio, FL 33576



OF LOTS 4 | TOTAL LOT SIZE 0.87 - 1.44 ACRES | TOTAL LOT PRICE \$1,000,000 - \$1,750,000 | -

STATUS	LOT #	SIZE	PRICE	ZONING
Available	1	0.9 Acres	\$1,000,000	MPUD Zoned with C2 uses
Available	2	0.87 Acres	\$1,000,000	MPUD Zoned with C2 uses
Available	3	1.21 Acres	\$1,000,000	MPUD Zoned with C2 uses
Available	4	1.44 Acres	\$1,750,000	MPUD Zoned with C2 uses

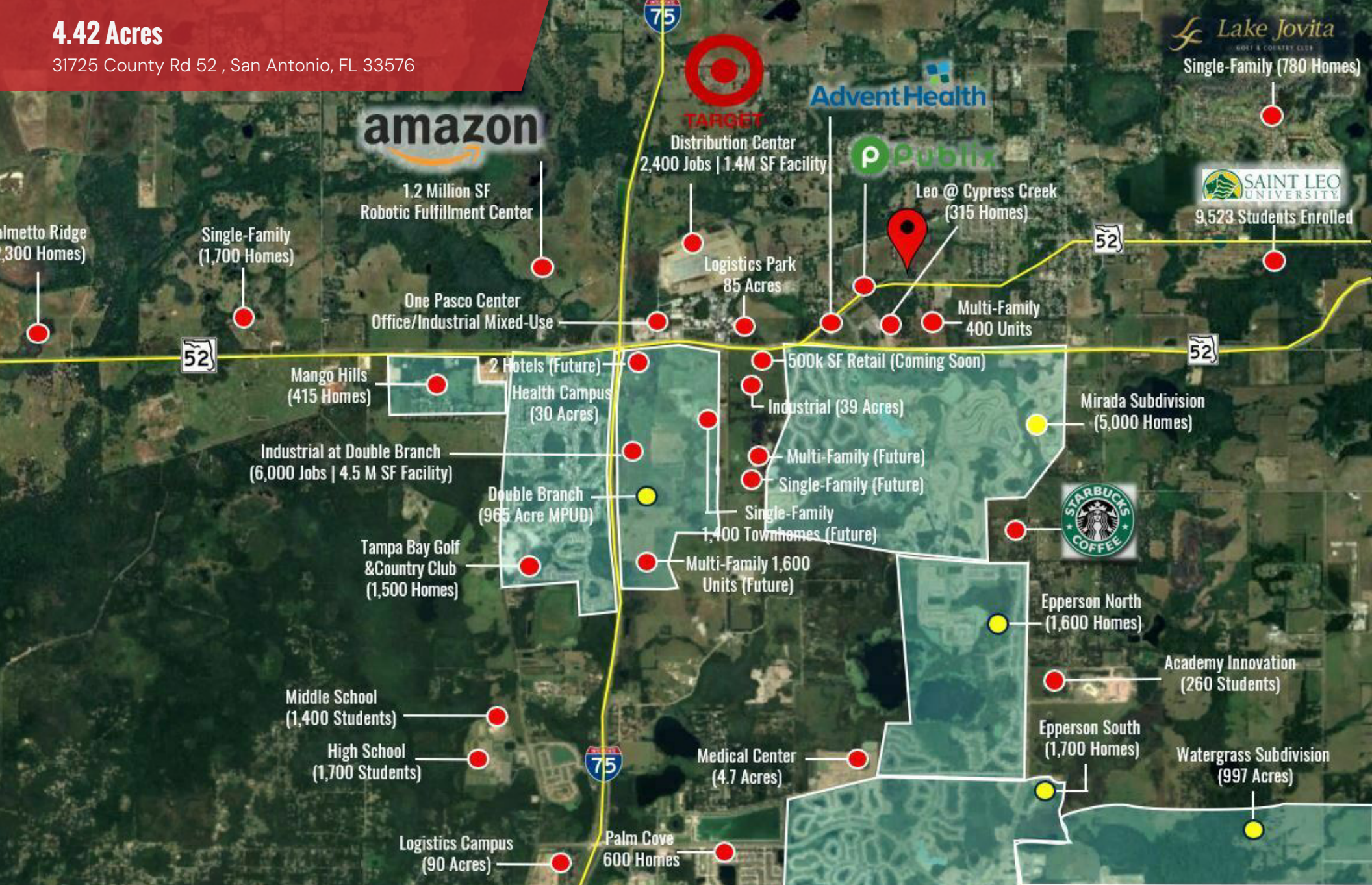
Brent Nye
Partner
C: 813.997.3333
brent@nyecommercial.com

Cody Brightwell
Managing Director
C: 440.376.1006
cody@nyecommercial.com



4.42 Acres

31725 County Rd 52, San Antonio, FL 33576



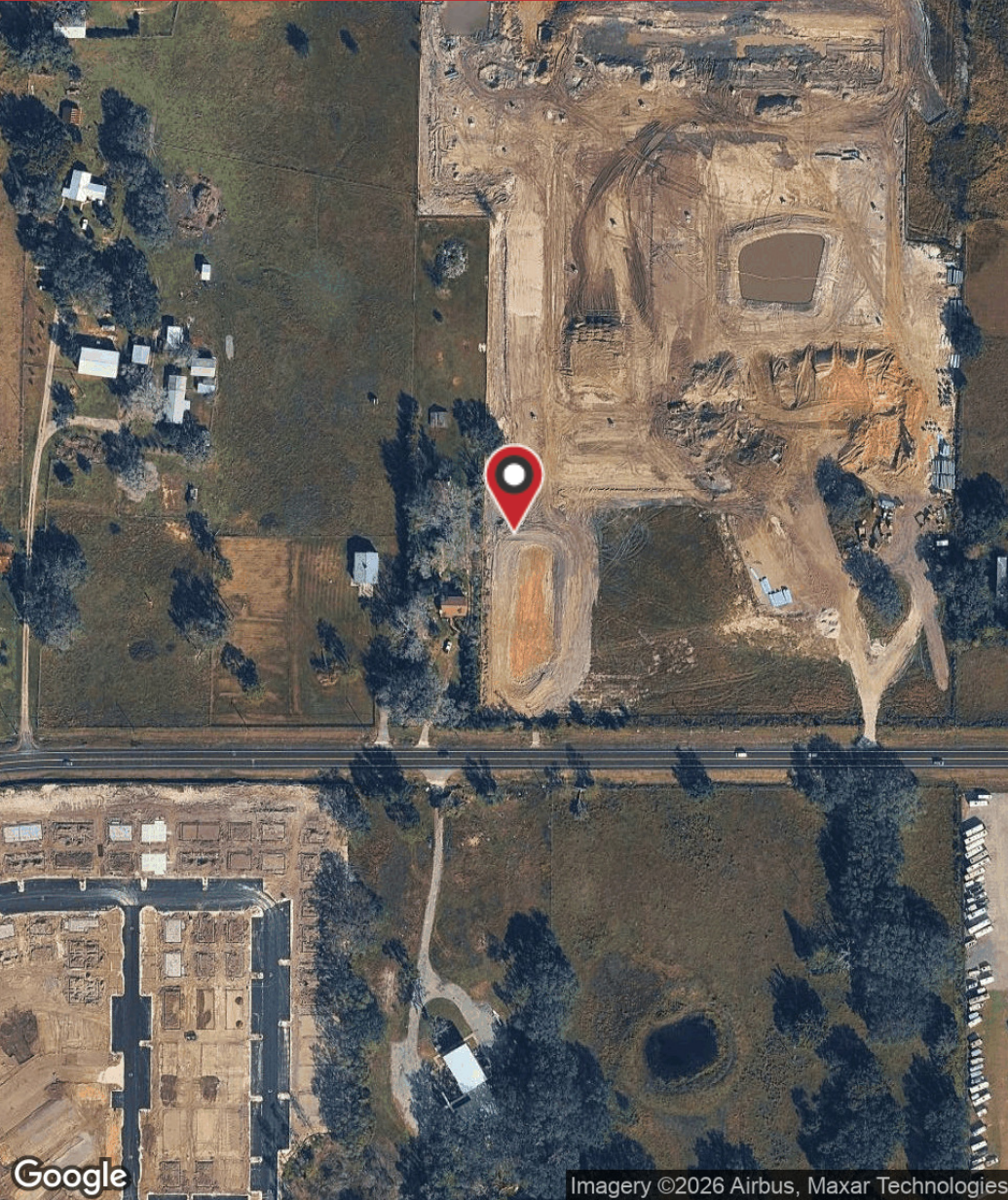
Brent Nye
Partner
C: 813.997.3333
brent@nyecommercial.com

Cody Brightwell
Managing Director
C: 440.376.1006
cody@nyecommercial.com

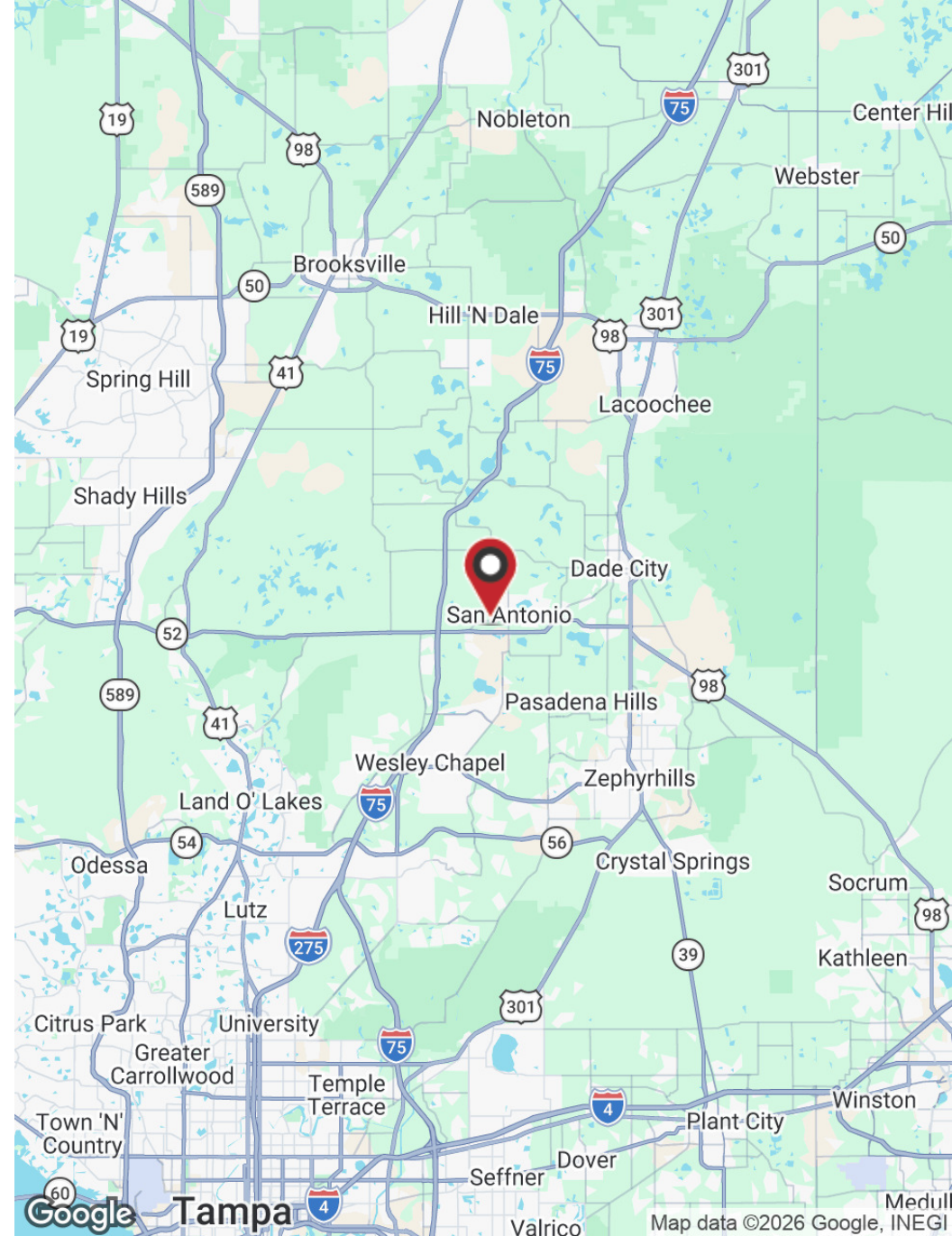


31725 CR 52

31725 County Rd 52, San Antonio, FL 33576



Imagery ©2026 Airbus, Maxar Technologies



Map data ©2026 Google, INEGI

Brent Nye
Partner
C: 813.997.3333
brent@nyecommercial.com

Cody Brightwell
Managing Director
C: 440.376.1006
cody@nyecommercial.com



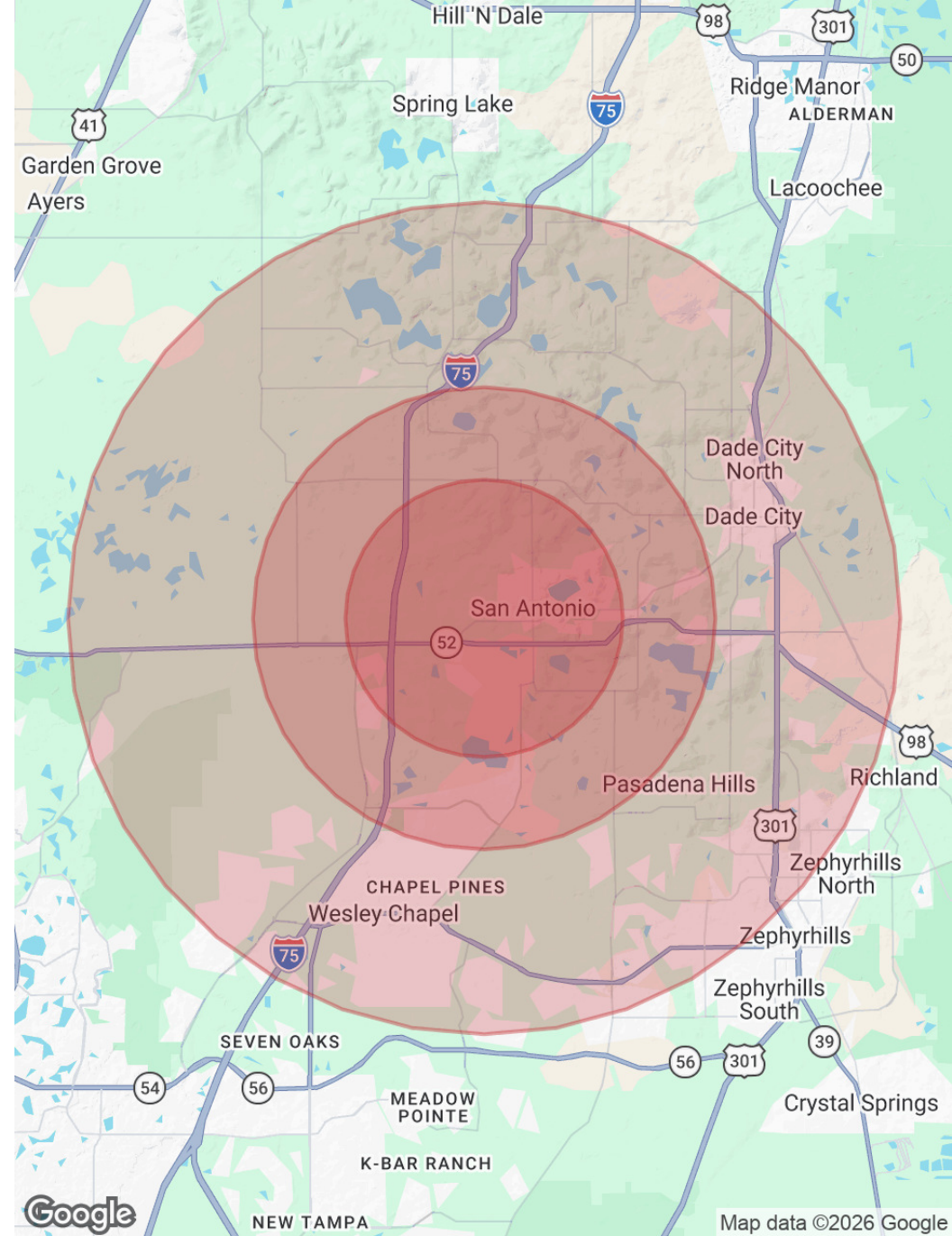
4.42 Acres

31725 County Rd 52, San Antonio, FL 33576

POPULATION	3 MILES	5 MILES	9 MILES
Total Population	8,750	29,830	150,727
Average Age	43	42	44
Average Age (Male)	43	41	43
Average Age (Female)	43	43	45

HOUSEHOLDS & INCOME	3 MILES	5 MILES	9 MILES
Total Households	2,778	10,479	58,044
# of Persons per HH	3.1	2.8	2.6
Average HH Income	\$135,379	\$128,609	\$101,865
Average House Value	\$526,971	\$442,472	\$332,781

2020 American Community Survey (ACS)



Brent Nye
Partner
C: 813.997.3333
brent@nyecommercial.com

Cody Brightwell
Managing Director
C: 440.376.1006
cody@nyecommercial.com



4.42 Acres

31725 County Rd 52 , San Antonio, FL 33576



BRENT NYE

Partner

Direct: 813.973.0214 **Cell:** 813.997.3333
brent@nyecommercial.com



CODY BRIGHTWELL

Managing Director

Direct: 813.973.0214 **Cell:** 440.376.1006
cody@nyecommercial.com

Brent Nye
Partner
C: 813.997.3333
brent@nyecommercial.com

Cody Brightwell
Managing Director
C: 440.376.1006
cody@nyecommercial.com

