



**MARTIN
COMMERCIAL
GROUP**
Commercial Real Estate Services



AVAILABLE FOR LEASE

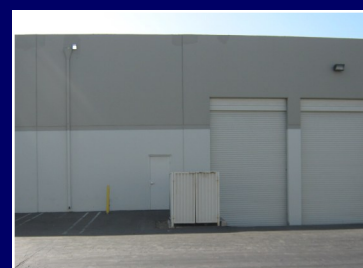
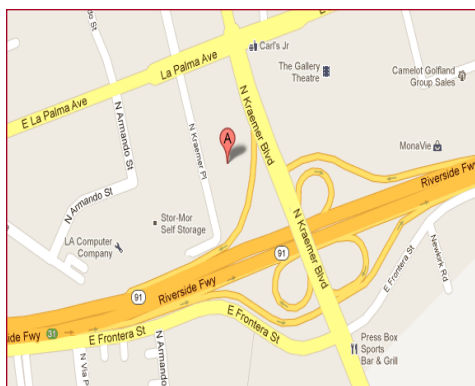
**12,000 SQ. FT. INDUSTRIAL BUILDING
TRUCK WELL & KRAEMER BOULEVARD FRONTAGE**



1070 N. KRAEMER PLACE ~ ANAHEIM

Features:

- Large Reception, Bullpen Office, Six (6) Private Offices & Conference Room
- Approx. 3,000 Sq. Ft. Office
- Kraemer Blvd. Visibility
- Fire Sprinklers
- 3Phase 120/208V (Verify)
- 18' Warehouse Clearance
- Two Position Truck Well with (2) 12'x14' Loading Doors
- One (1) 12'x14' GL Loading Door
- Easy Access to the 91, 55 & 57 Freeways
- Professionally Managed



**For More Information
Please Contact:**

SAM GREEK
sgreek@mcgre.com
DRE # 01240614

ERIN LAGOMARSINO

elagomarsino@mcgre.com
DRE # 00992436

714.241.1141

1495 E. Warner Avenue
Santa Ana, CA 92705

*Since 1953...
Orange County ~ Inland Empire*

The information contained herein has been obtained from sources we deem reliable. While we have no reason to doubt its accuracy, we do not guarantee it.

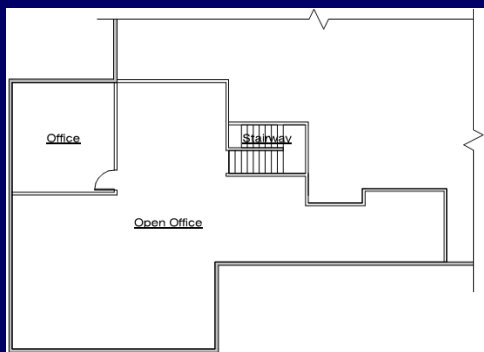


MARTIN
COMMERCIAL
GROUP

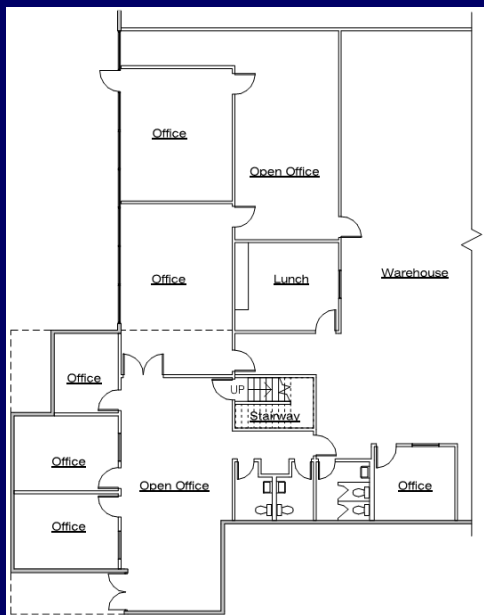
Commercial Real Estate Services



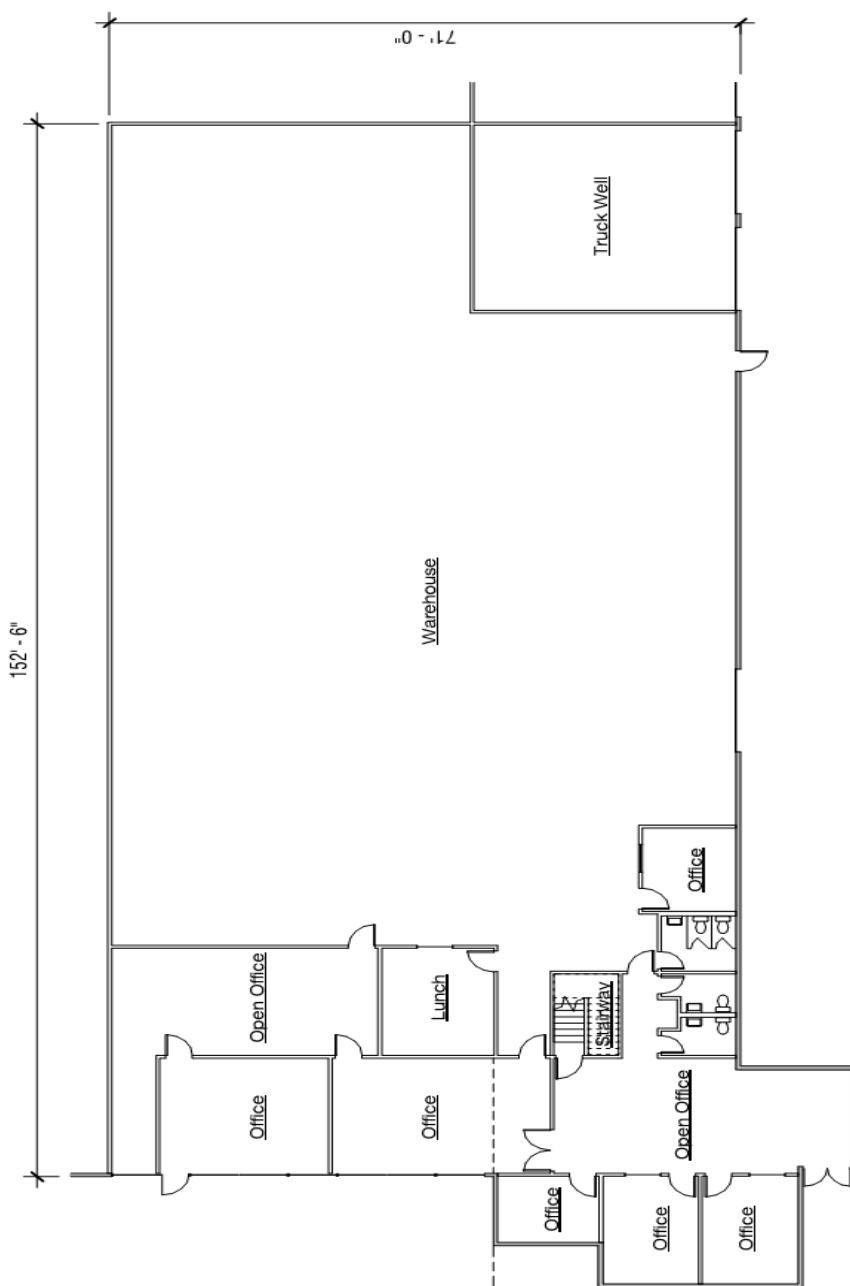
1070 N. Kraemer Place, Anaheim, CA 12,000 Sq. Ft.



UPPER LEVEL - MEZZANINE



LOWER LEVEL - FLOOR PLAN



WWW.MCGRE.COM