

**CHASE TOWER**

333 W. HAMPDEN AVENUE  
ENGLEWOOD, CO 80110

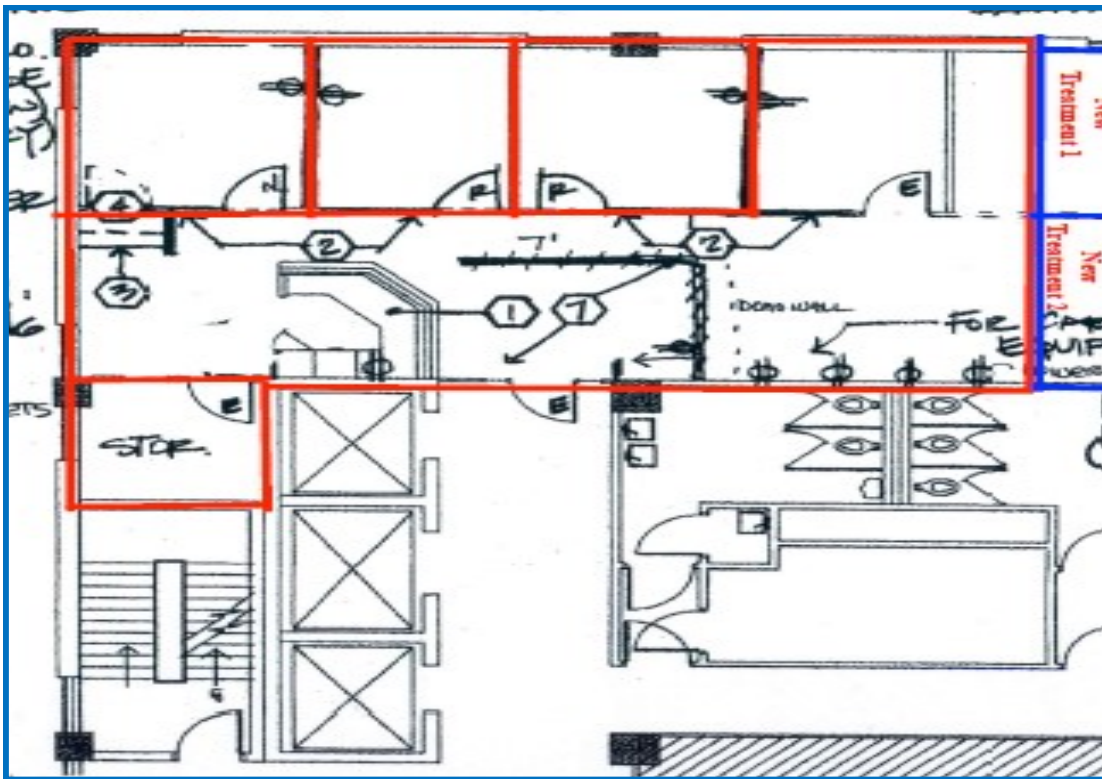


**\$19.00—\$21.00 Full Service Rate**

**Full service lease rate—all expenses included**

**Suite 500  
1,417 SF**

**Four offices, open space**



No warranty or representation is made as to the accuracy of the foregoing information.  
Terms of sale or lease and availability are subject to change or withdrawal without notice.

**FOR MORE INFORMATION, PLEASE CALL:**

**John V. Propp, CCIM—303/692-1816  
6020 Greenwood Plaza Blvd., Suite 100  
Greenwood Village, CO 80111**

**learn more at [www.JohnProppCommercial.com](http://www.JohnProppCommercial.com)**



**CHASE TOWER**

333 W. HAMPDEN AVENUE  
ENGLEWOOD, CO 80110

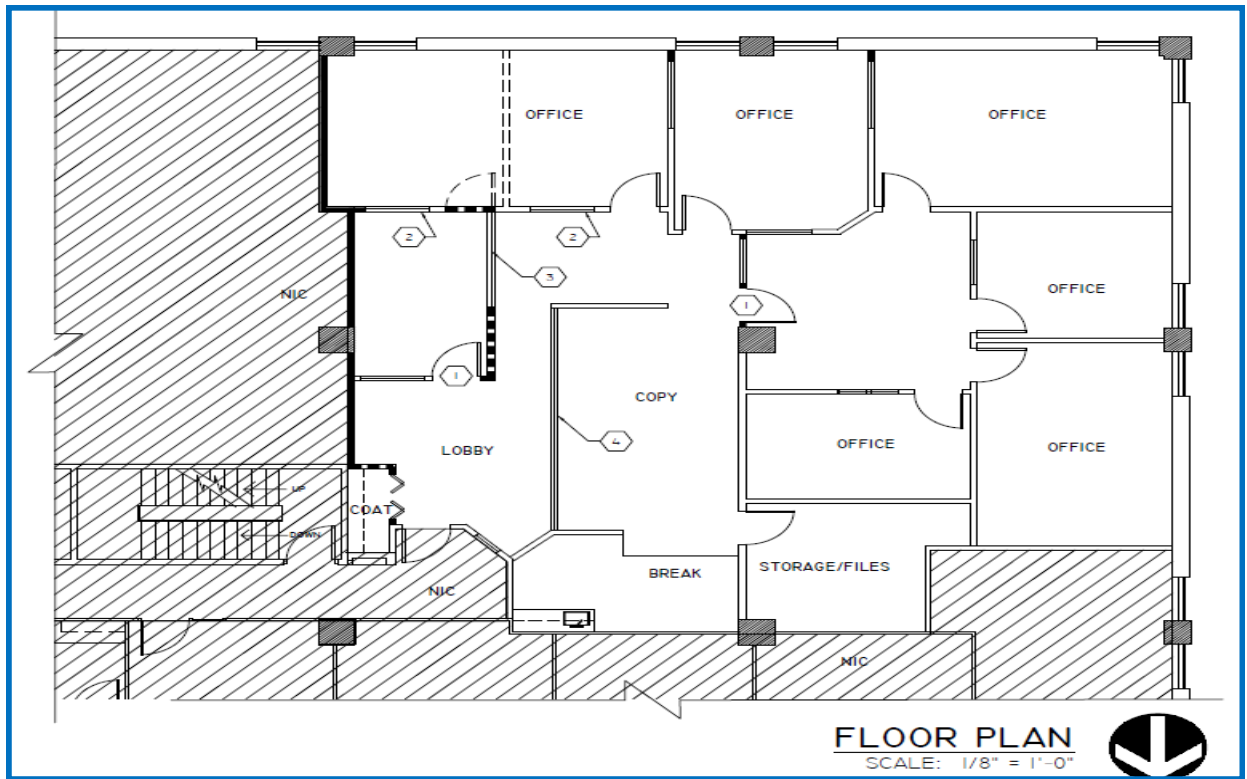


**\$19.00—\$21.00 Full Service Rate**

**Full service lease rate—all expenses included**

**Suite 545  
2,817 SF**

**8 offices, kitchenette, bullpen,  
conference room, storage**



No warranty or representation is made as to the accuracy of the foregoing information.  
Terms of sale or lease and availability are subject to change or withdrawal without notice.

**FOR MORE INFORMATION, PLEASE CALL:**

**John V. Propp, CCIM—303/692-1816  
6020 Greenwood Plaza Blvd., Suite 100  
Greenwood Village, CO 80111**

**learn more at [www.JohnProppCommercial.com](http://www.JohnProppCommercial.com)**



## CHASE TOWER

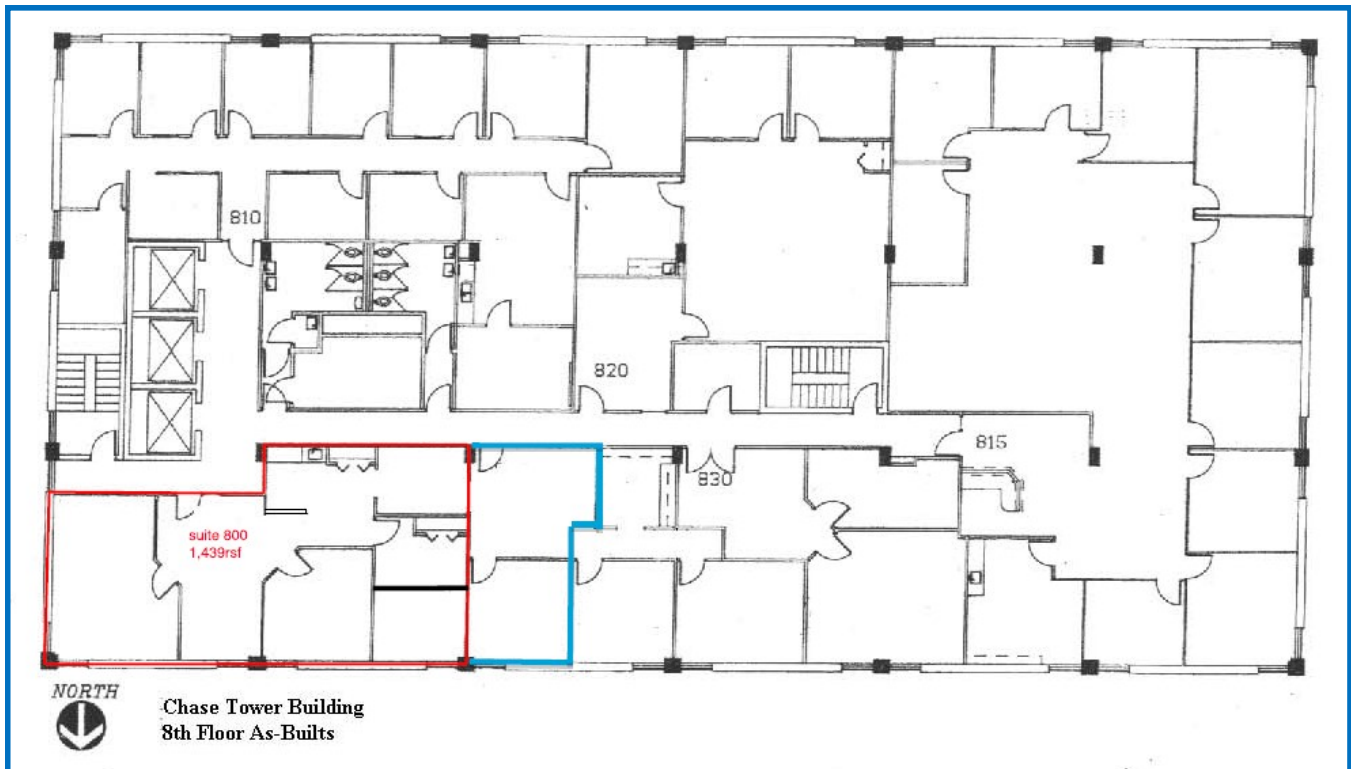
333 W. HAMPDEN AVENUE  
ENGLEWOOD, CO 80110

**\$19.00—\$21.00 Full Service Rate**

**Full service lease rate—all expenses included**

**Suite 800  
1,439 square feet**

**Four offices, reception, breakroom,  
storage room**



No warranty or representation is made as to the accuracy of the foregoing information.  
Terms of sale or lease and availability are subject to change or withdrawal without notice.

**FOR MORE INFORMATION, PLEASE CALL:**

**John V. Propp, CCIM—303/692-1816  
6020 Greenwood Plaza Blvd., Suite 100  
Greenwood Village, CO 80111**

**learn more at [www.JohnProppCommercial.com](http://www.JohnProppCommercial.com)**



## CHASE TOWER

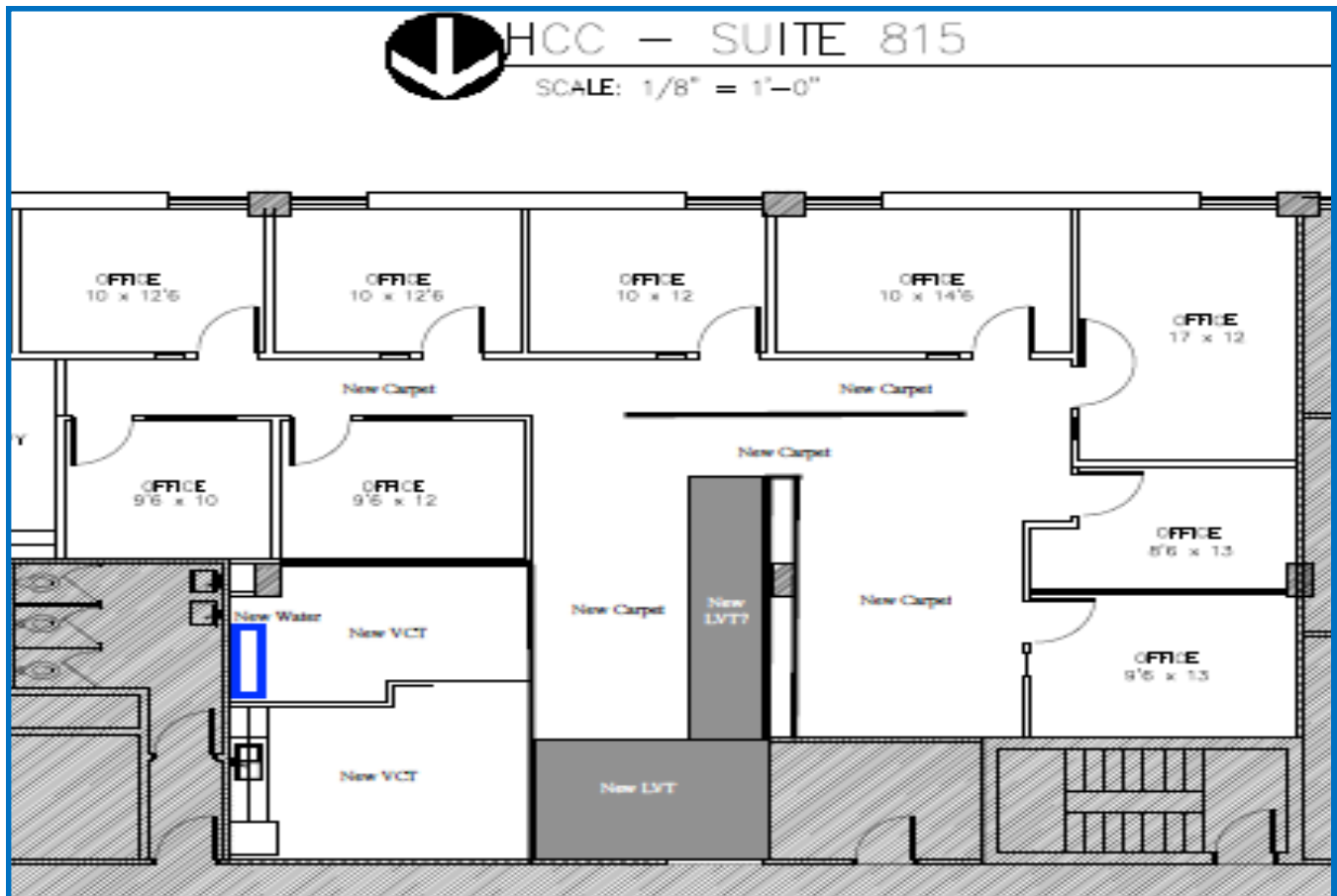
333 W. HAMPDEN AVENUE  
ENGLEWOOD, CO 80110

**\$19.00—\$21.00 Full Service Rate**

**Full service lease rate—all expenses included**

**Suite 815  
2,777 square feet**

**Offices, reception, kitchenette, workroom**



No warranty or representation is made as to the accuracy of the foregoing information.  
Terms of sale or lease and availability are subject to change or withdrawal without notice.

**FOR MORE INFORMATION, PLEASE CALL:**

**John V. Propp, CCIM—303/692-1816**  
6020 Greenwood Plaza Blvd., Suite 100  
Greenwood Village, CO 80111

learn more at [www.JohnProppCommercial.com](http://www.JohnProppCommercial.com)



**CHASE TOWER**

333 W. HAMPDEN AVENUE  
ENGLEWOOD, CO 80110

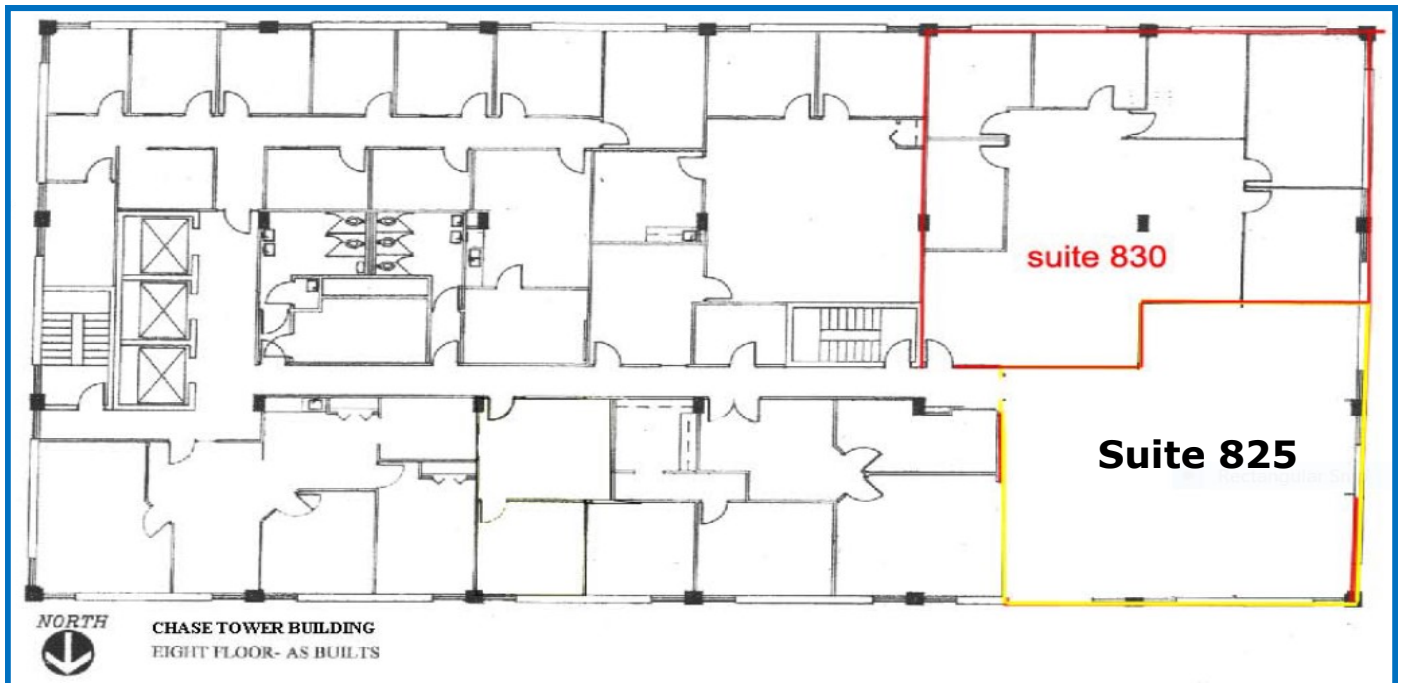


**\$19.00—\$21.00 Full Service Rate**

**Full service lease rate—all expenses included**

**Suite 825  
651 square feet**

**Entry open space, one office**



No warranty or representation is made as to the accuracy of the foregoing information.  
Terms of sale or lease and availability are subject to change or withdrawal without notice.

**FOR MORE INFORMATION, PLEASE CALL:**

**John V. Propp, CCIM—303/692-1816**  
6020 Greenwood Plaza Blvd., Suite 100  
Greenwood Village, CO 80111

learn more at [www.JohnProppCommercial.com](http://www.JohnProppCommercial.com)



## CHASE TOWER

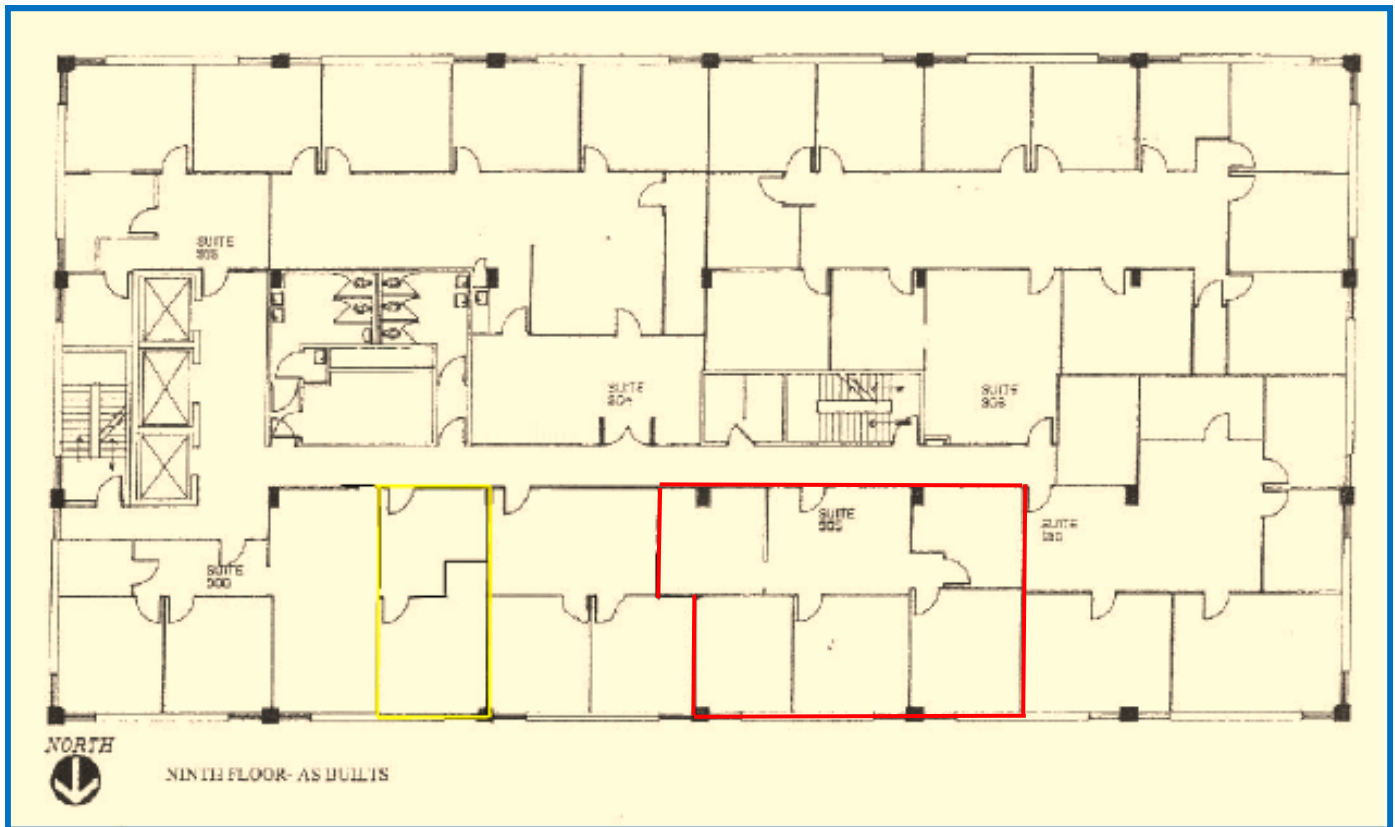
333 W. HAMPDEN AVENUE  
ENGLEWOOD, CO 80110

**\$19.00—\$21.00 Full Service Rate**

**Full service lease rate—all expenses included**

**Suite 905  
1,047 square feet**

**Three offices, reception, open space**



No warranty or representation is made as to the accuracy of the foregoing information.  
Terms of sale or lease and availability are subject to change or withdrawal without notice.

**FOR MORE INFORMATION, PLEASE CALL:**

**John V. Propp, CCIM—303/692-1816  
6020 Greenwood Plaza Blvd., Suite 100  
Greenwood Village, CO 80111**

**learn more at [www.JohnProppCommercial.com](http://www.JohnProppCommercial.com)**



## CHASE TOWER

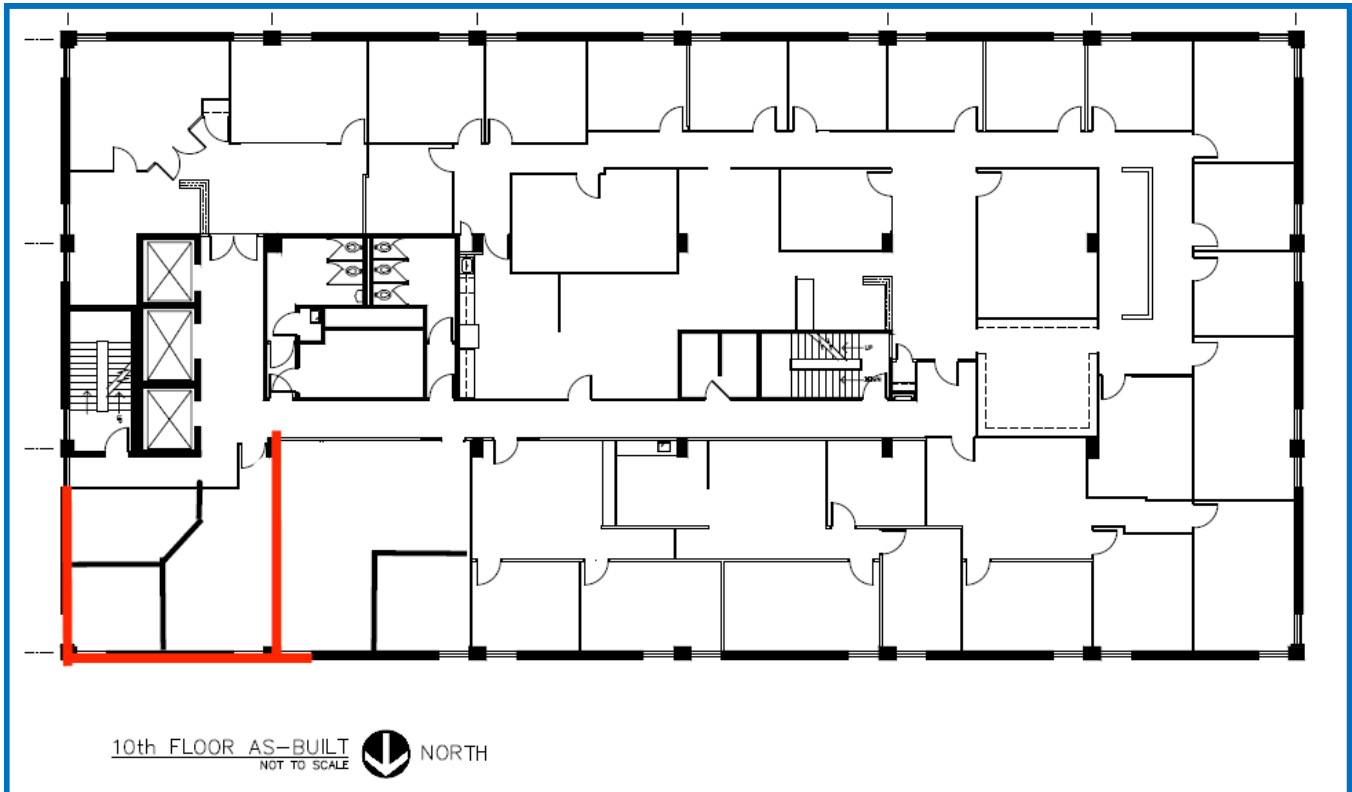
333 W. HAMPDEN AVENUE  
ENGLEWOOD, CO 80110

**\$19.00—\$21.00 Full Service Rate**

**Full service lease rate—all expenses included**

**Suite 1010  
692 square feet**

**Two offices, open space**



10th FLOOR AS-BUILT  
NOT TO SCALE



NORTH

No warranty or representation is made as to the accuracy of the foregoing information.  
Terms of sale or lease and availability are subject to change or withdrawal without notice.

**FOR MORE INFORMATION, PLEASE CALL:**

**John V. Propp, CCIM—303/692-1816  
6020 Greenwood Plaza Blvd., Suite 100  
Greenwood Village, CO 80111**

**learn more at [www.JohnProppCommercial.com](http://www.JohnProppCommercial.com)**



## CHASE TOWER

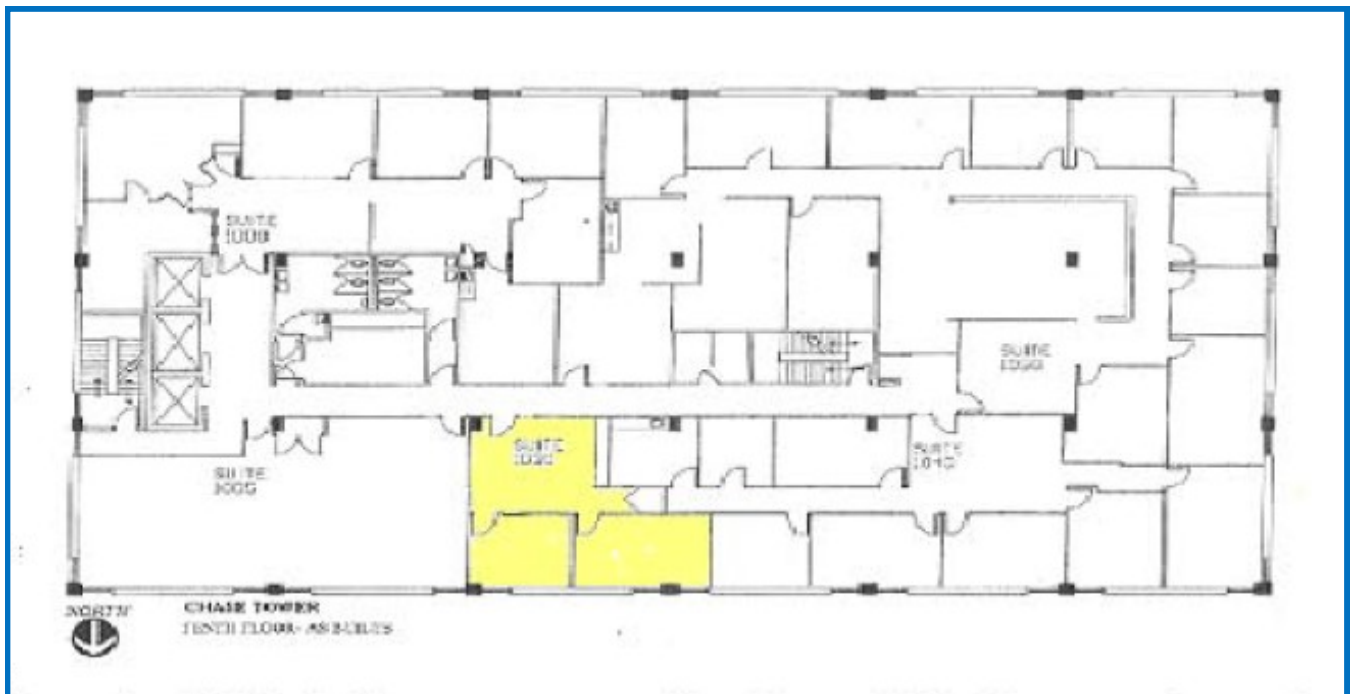
333 W. HAMPDEN AVENUE  
ENGLEWOOD, CO 80110

**\$19.00—\$21.00 Full Service Rate**

**Full service lease rate—all expenses included**

**Suite 1030  
781 square feet**

**Two offices and reception area.  
Reception has built-ins and storage closet.  
Recently upgraded with new carpet,  
ceiling tiles, light fixtures.**



No warranty or representation is made as to the accuracy of the foregoing information.  
Terms of sale or lease and availability are subject to change or withdrawal without notice.

**FOR MORE INFORMATION, PLEASE CALL:**

**John V. Propp, CCIM—303/692-1816  
6565 S. Dayton St., Suite 3000  
Greenwood Village, CO 80111**

**learn more at [www.JohnProppCommercial.com](http://www.JohnProppCommercial.com)**

