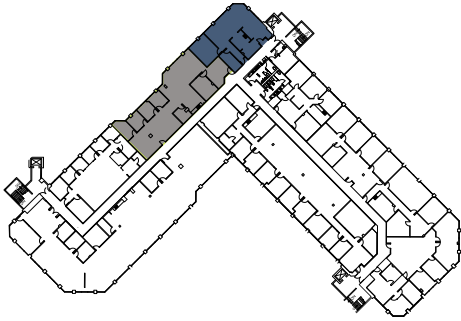




30TWEENTY

BILTMORE LAKES

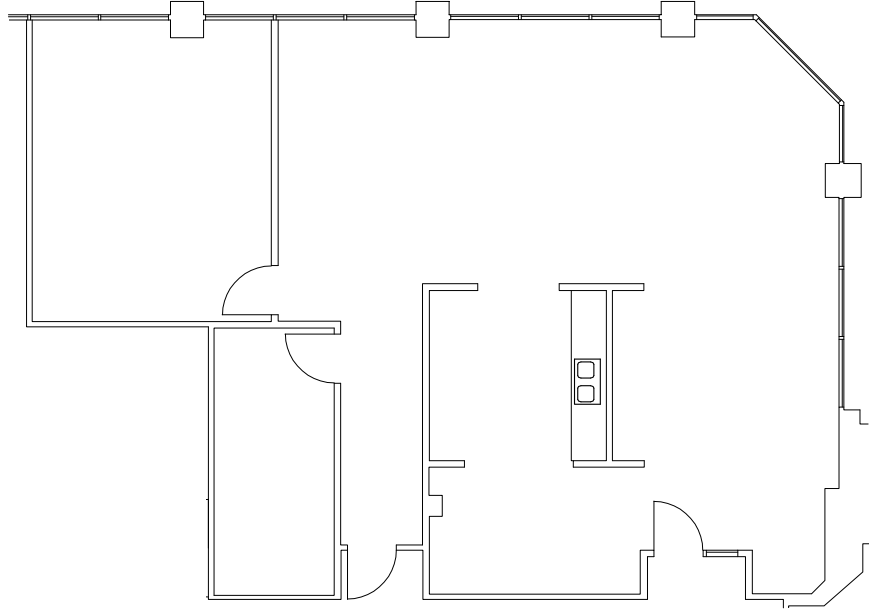


■ - Contiguous spaces



Suite 370 | 1,799 SF

Contiguous up to 5,044 SF



VIRTUAL
TOUR



Get in Touch

MATT BANISZEWSKI
Vice President
DIR +1 602 222 5176
matt.baniszewski@colliers.com

TODD NOEL, CCIM
Vice Chairman
DIR +1 602 222 5190
todd.noel@colliers.com



Colliers | 2390 E Camelback Rd, Ste 100 Phoenix, Arizona 85016 | colliers.com/arizona