



Space Profile for

Unit: #062

Area: 14440 sq ft

Address

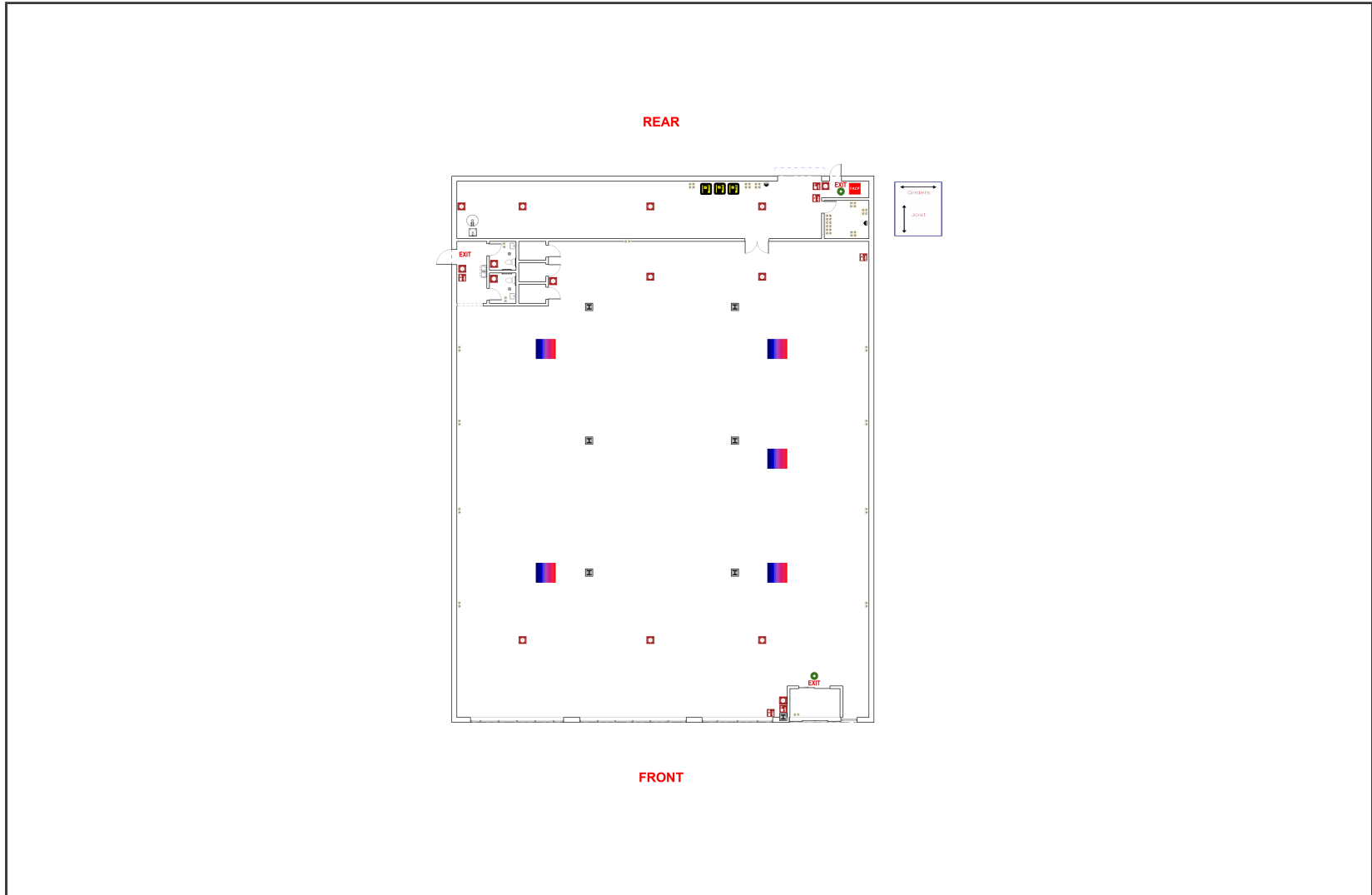
5287 US 280, Suite 207

Birmingham, AL 35242



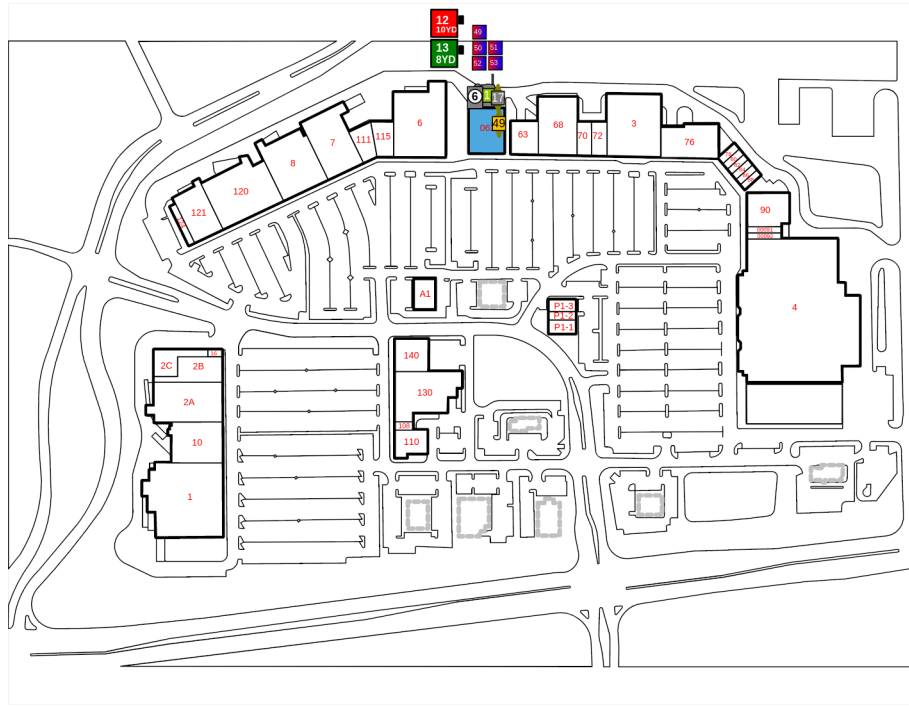
400 N. Tampa St., Suite 2210

Tampa, FL, 33602



Legend

	Breaker Panel		Fire Extinguisher		Ceiling Fan w/ Light		Fire Sprinkler
	Circular Column		Fire Alarm Pulldown		Rectangular Column		Pocket Door
	Appliance Outlet		Glass Door		Refrigerator		Track Lighting
	Fire Alarm		Handicap Handrail		Roll-Up Door		2-Bulb Fluorescent Lighting
	Drinking Fountain		Roof Hatch		Sink		3-Bulb Fluorescent Lighting
	Door		HVAC Unit		Swing Door		4-Bulb Fluorescent Lighting
	Double Hung Door		Recessed Light		Toilet		Ceiling Air Vent
	Electrical Outlet		Staircase		Can Light		Air Diffuser
	Emergency Light		Water Heater		Urinal		Ceiling Fan w/o Light
	EXIT Light		Telephone Panel		Thermostat		Air Handler
	Tankless Water Heater		Window Wall Opening		RJ 45		Fire Alarm Control Panel
	Step Down Transformer		Maintenance Sink		Window		Tenant Water Meter
	Disconnect		Sub Water Meter		House Gas Meter		Sub Gas Meter
	House Water Meter		Air Handler		House Electric Meter		Tenant Electric Meter
	Tenant Gas Meter						
	Sub Electric Meter						



Space Overview

Overview	Actual Square Footage	Measured Depth of Space	Total Depth of Space	Has Stepdown Transformer
	14440 SQFT	137' 0"	137' 0"	No

Thickness	Front Wall	Rear Wall	Left Wall	Right Wall
	1' 3"	1' 3"	1' 3"	1' 3"

Flooring	Concrete	Carpet	Tile	Other	Unit	Total
	1359.93 SQFT			12226.21 SQFT	14440 SQFT	13586.14 SQFT

Ceiling Information	Height From Floor To Ceiling	Height From Floor To Bottom Of Deck	Height From Floor To Bottom Of Joist
	Front: 21' 2" Back: 18' 6"	Front: 21' 2" Back: 18' 6"	Front: 19' 7" Back: 16' 4"

Ceiling Information Cont.	Clear Ceiling Height	Height From Floor To Bottom Of Girder	Number Of Acoustical Tiles
	12' 9"		

Other Cont.	Phone Board Location	Mop Sink Location	Thermostat Location	Dmarc Distance	Are Interior Walls Full Height
					No

Other Cont.	Hazardous Materials	Loading Dock	Are Demising Walls Full Height	Changes In Demising Wall Thickness
	No	No	No	No

Mechanical

HVAC	Reference	Manufacturer	Model	Serial	Tonnage	Year	Notes
	49	LENNOX	LGH060H4ES2G	5614C09397	5	2014	
	52	LENNOX	LGH150S4B53G	5614C08741	12.5	2014	
	53	LENNOX	LGH150S4BS3G	5614C08740	12.5	2014	
	50	LENNOX	LGH120H4BS2G	5614C08739	10	2014	
	51	LENNOX	LGH120H4BS2G	5614C08738	10	2014	

Electric

Service Panel	Reference	Amps	Service Type	Panel Type	Panel UL Number	Manufacturer	Location	Notes
	3	50	120/208	PRL1A Panelboard	HW 442652	Eaton	Storage Room; Rear Wall	
	1	400	277/480	PRL3a Panelboard	Not Listed	Eaton	Storage Room; Rear Wall	
	2	200	120/208	PRL2A Panelboard	HW 442647	Eaton	Storage Room; Rear Wall	

Disconnect	Reference	Amps	Location	Panel Number	Manufacturer	Notes	Handle or Breaker
	6	400	Rear Exterior Wall Mounted	Not Listed	General Electric		Handle

Electric Meter	Reference	Meter #	Location	Meter Reading	Read On	Voltage	Notes
	6	3322421	Rear Exterior Wall Mounted				120-480V

IDPlans does not provide an Ampacity Report

Plumbing

Backflows	Number of Backflows	Location	Size	Notes
	1	Rear Exterior in Planter Area by Meter	3"	

Water Heater	Reference	Manufacturer	Model	Serial	Gallons	Tankless	Water Line (in)	Location	Notes
	1	A.O. Smith Water Products Company	DEL 15 102	1419J00447	15	No	.75	Storage Room; Front Wall	Electric

Water Fountains	Number of Water Fountains	Location	Notes
	2	Vestibule 2; Between Restrooms	

Water Meter	Reference	Meter #	Location	Size	Notes
	17	22022885	Rear Exterior Ground Meter Box in Planter Area	2 inch	

Sub Water Meter	Reference	Meter #	Location	Size	Notes
	49	94426522	Interior of Unit, In Storage Room by Riser	1 inch	

Waste

Dumpster	Reference	Yardage	Company
	12	10YD	Advance Disposal

Fire

Fire Extinguisher	Number of Fire Extinguishers	Notes
	4	

Fire Alarm Control Panel	Reference	Manufacturer	Model	Number of Lines	Phone Numbers Listed	Notes
	1	Honeywell	Gamewell 7100-1D-PNL	1	205-661-4822	In Storage Room by Riser

Sprinkler Heads	Sprinkler Heads Present	Sprinkler Head Type	Riser Located in Space	Riser Location	Additional Information
	85	Upright	Yes	Storage Room; Rear Right Corner	

Gas

Gas Meter	Reference	Meter #	Location	Size	Notes
	1		BA767308	Rear Exterior Wall Mounted	3/4 inch

Room

Restroom	Unit	Description
	Restroom 2	Women's Restroom
	Restroom 1	Men's Restroom

Storefront 1

