

WILLAMETTE 205 CORPORATE CENTER

1800 & 1830 Blankenship Road | West Linn, OR 97068

FOR LEASE



CLASS A OFFICE SPACE FOR LEASE

BUILDING 1800 - \$32.00 PSF, FS

FIRST FLOOR

- Suite A130: ± 2,587 SF
Term end 2/28/30
\$25.00 PSF Sublease

- Suite A197: ± 1,049 SF

SECOND FLOOR

- Suite A200: ± 9,500 SF

THIRD FLOOR

- Suite A355: ± 825 SF
- Suite A360: ± 2,400 SF

FOURTH FLOOR

- Suite A440: ± 4,400 SF
- Suite A448: ± 1,850 SF



BUILDING 1830 - \$31.00 PSF, FS

FIRST FLOOR

- Suite B100: ± 3,783 SF

05.13.2026

For more information or a property tour, please contact:

TIM PFEIFFER

503.225.8455

TimP@norris-stevens.com

Norris & Stevens

INVESTMENT REAL ESTATE SERVICES



Information contained herein has been obtained from others and considered to be reliable; however, a prospective purchaser or lessee is expected to verify all information to their own satisfaction.

900 SW 5th Avenue • 17th Floor • Portland, OR 97204
503.223.3171 • norris-stevens.com

WILLAMETTE 205 CORPORATE CENTER

1800 & 1830 Blankenship Road | West Linn, OR 97068

FOR LEASE

PROPERTY FEATURES

DETAILS

Contemporary design, marble, granite, mahogany, and glass furnishings. The Willamette 205 Corporate Center also features a steel exterior within a smart building with state of the art energy control systems, and high speed internet access with fiber optic cabling throughout the building.

FEATURES

- Approximately ± 105,000 SF Class A office building completed in 1999
- Views of Willamette River Valley
- Access to shared conference room with technologically advanced video conferencing and voice-over IP capabilities with kitchen amenities next door
- Approximately 4 / 1,000 parking ratio
- Attractive black and glass exterior, beautiful interior lobby
- State-of-the-art heating, cooling, electrical, security and fire protection services
- Easy access to I-205 and I-5



For more information or a property tour, please contact:

TIM PFEIFFER

503.225.8455

TimP@norris-stevens.com

Norris & Stevens

INVESTMENT REAL ESTATE SERVICES



Information contained herein has been obtained from others and considered to be reliable; however, a prospective purchaser or lessee is expected to verify all information to their own satisfaction.

900 SW 5th Avenue • 17th Floor • Portland, OR 97204
503.223.3171 • norris-stevens.com

WILLAMETTE 205 CORPORATE CENTER

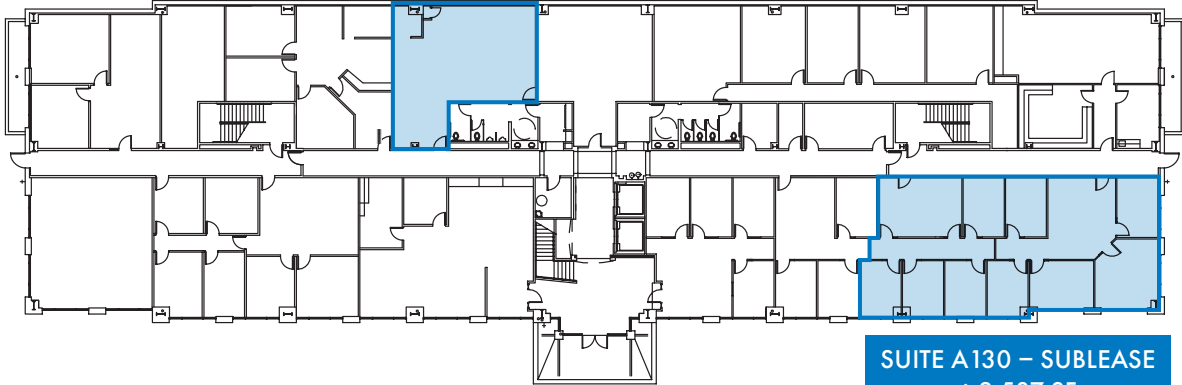
1800 & 1830 Blankenship Road | West Linn, OR 97068

FOR LEASE

FLOOR PLANS - BUILDING 1800

FIRST FLOOR

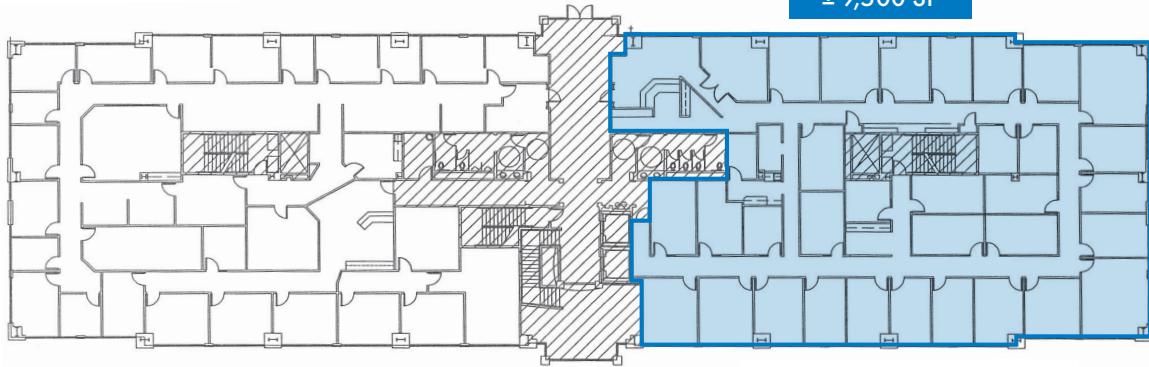
SUITE A197
± 1,049 SF



SUITE A130 - SUBLEASE
± 2,587 SF

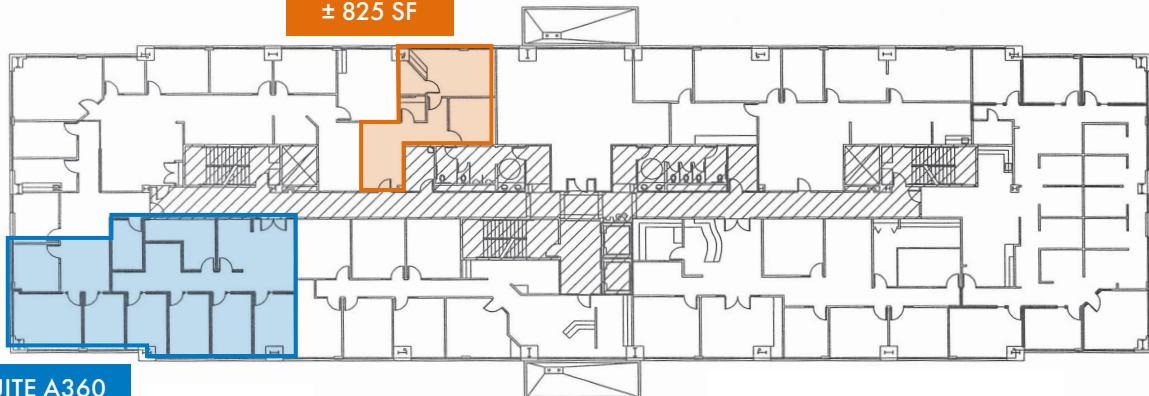
SECOND FLOOR

SUITE A200
± 9,500 SF



THIRD FLOOR

SUITE A355
± 825 SF



SUITE A360
± 2,400 SF

For more information or a property tour, please contact:

TIM PFEIFFER

503.225.8455

TimP@norris-stevens.com

Norris & Stevens

INVESTMENT REAL ESTATE SERVICES



Information contained herein has been obtained from others and considered to be reliable; however, a prospective purchaser or lessee is expected to verify all information to their own satisfaction.

900 SW 5th Avenue • 17th Floor • Portland, OR 97204
503.223.3171 • norris-stevens.com

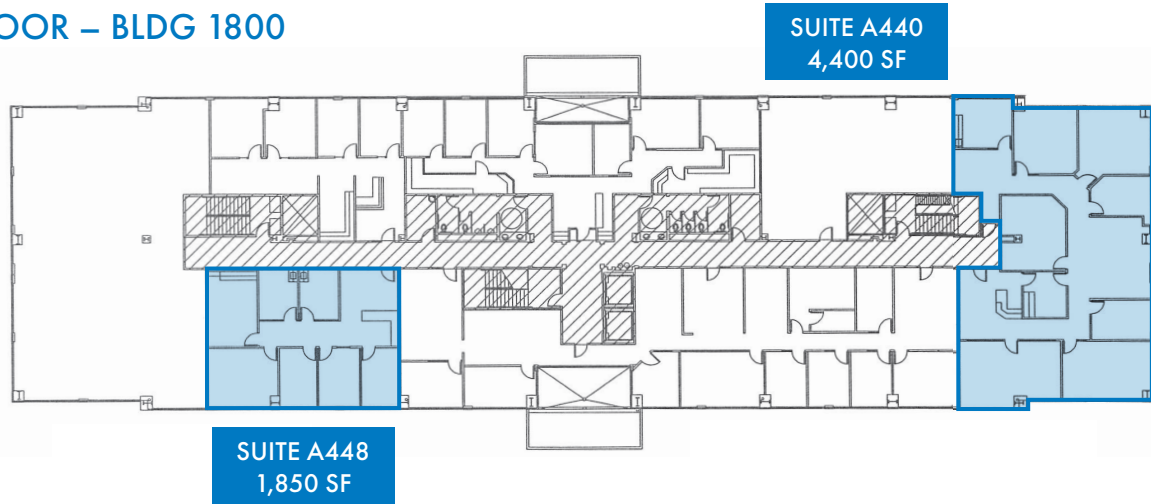
WILLAMETTE 205 CORPORATE CENTER

1800 & 1830 Blankenship Road | West Linn, OR 97068

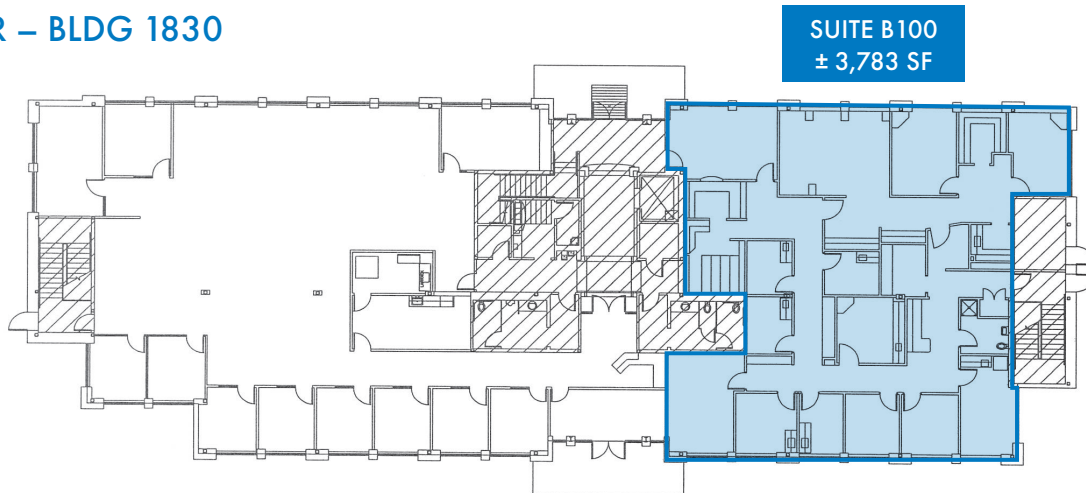
FOR LEASE

FLOOR PLANS - BUILDING 1800 & 1830

FOURTH FLOOR – BLDG 1800



FIRST FLOOR – BLDG 1830



For more information or a property tour, please contact:

TIM PFEIFFER

503.225.8455

TimP@norris-stevens.com

Norris & Stevens

INVESTMENT REAL ESTATE SERVICES



Information contained herein has been obtained from others and considered to be reliable; however, a prospective purchaser or lessee is expected to verify all information to their own satisfaction.

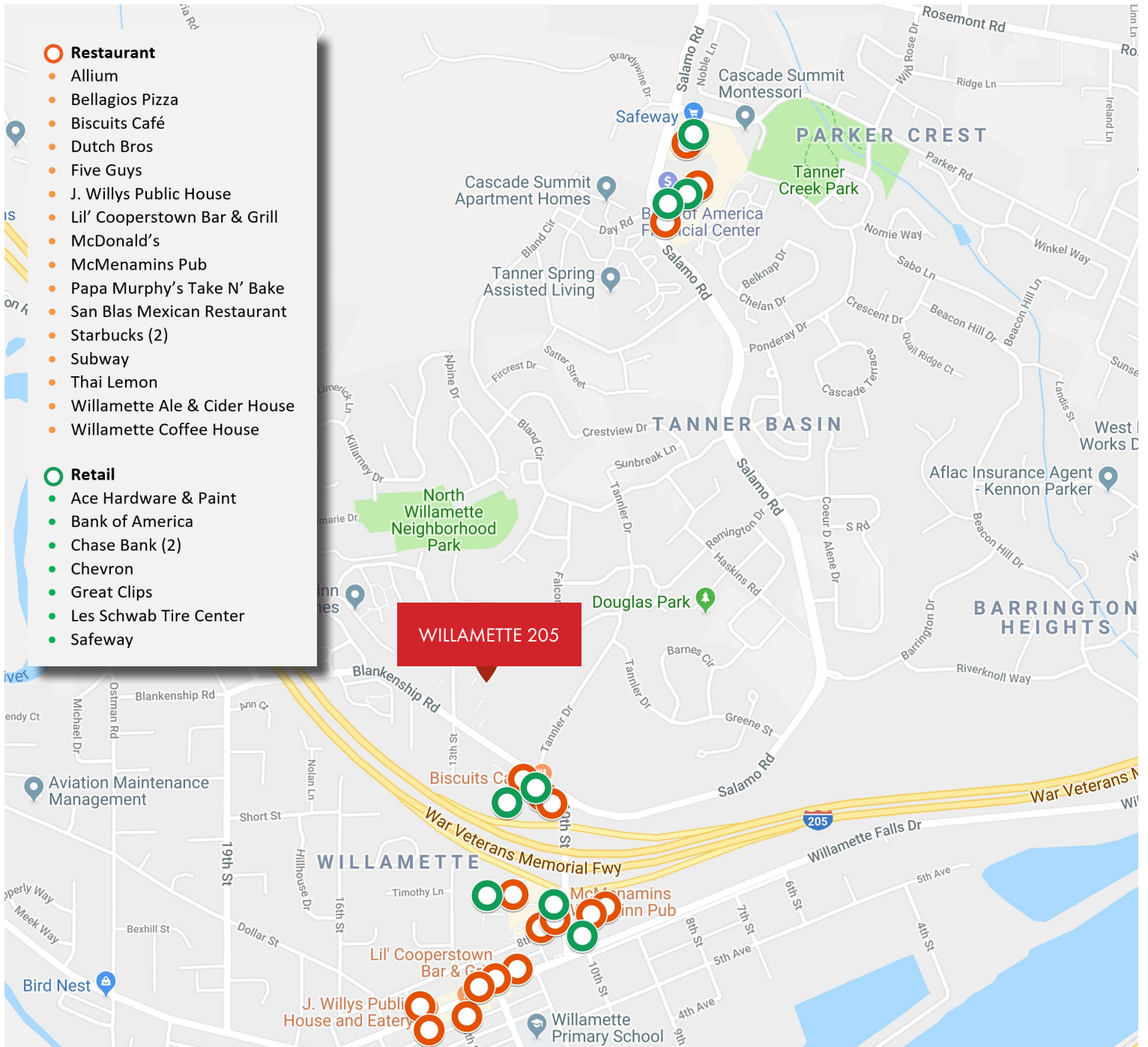
900 SW 5th Avenue • 17th Floor • Portland, OR 97204
503.223.3171 • norris-stevens.com

WILLAMETTE 205 CORPORATE CENTER

1800 & 1830 Blankenship Road | West Linn, OR 97068

FOR LEASE

RETAIL MAP



For more information or a property tour, please contact:

TIM PFEIFFER

503.225.8455

TimP@norris-stevens.com

Norris & Stevens

INVESTMENT REAL ESTATE SERVICES



Information contained herein has been obtained from others and considered to be reliable; however, a prospective purchaser or lessee is expected to verify all information to their own satisfaction.

900 SW 5th Avenue • 17th Floor • Portland, OR 97204
503.223.3171 • norris-stevens.com

WILLAMETTE 205 CORPORATE CENTER

1800 & 1830 Blankenship Road | West Linn, OR 97068

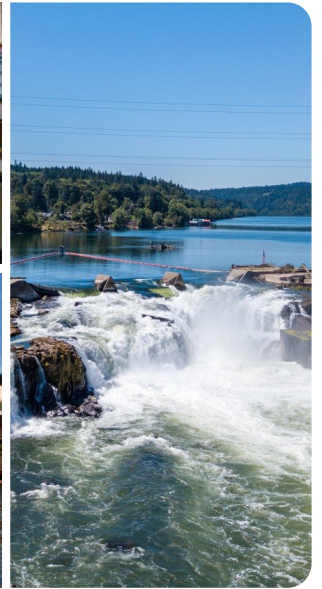
FOR LEASE

AREA INFORMATION

WEST LINN

*The city of hills,
trees and rivers*

Bordered by the Willamette and Tualatin Rivers, West Linn provides the ideal place to live, work and play. The city has been ranked as one of the 'Best Places to Live' by CNN and Money Magazine three times.



WEST LINN DEMOGRAPHICS

Median Household Income:	\$100,188
Per Capita Income:	\$49,122
Median Home Value:	\$433,300
Housing Units:	≈26,000
Total Number of Businesses	5,284*
*5-mile radius	

MAJOR REGIONAL EMPLOYERS

- Tanner Springs
- Safeway
- West Linn Paper Co.
- Elton Enterprise
- SmithKline Beecham
- Laidlaw Int.
- Zupan's Markets
- Clackamas County
- Oregon Golf Club
- Netbiz
- Parr Lumber
- USPS

WHY CHOOSE CLACKAMAS COUNTY?



No Business Tax

City of Portland - 2.2% of net income
Multnomah County - 1.45% of net income.



No Sales Tax

Washington State and Clark County combined sales tax 8.40%.



Competitive Rates

CBD office rates continue to rise; averaging \$32.21/sf as of July, 2019.



Central Location

Conveniently situated on I-205 & I-5 routes providing access to major metro areas



Skilled Workforce

Large labor force of 213,177, 56.2% of West Linn residents age 25+ have a Bachelor's degree or higher

For more information or a property tour, please contact:

TIM PFEIFFER

503.225.8455

TimP@norris-stevens.com

Norris & Stevens

INVESTMENT REAL ESTATE SERVICES



Information contained herein has been obtained from others and considered to be reliable; however, a prospective purchaser or lessee is expected to verify all information to their own satisfaction.

900 SW 5th Avenue • 17th Floor • Portland, OR 97204
503.223.3171 • norris-stevens.com