

# 4320 South Padre Island Dr.

## Suite B & C



Cherylyn Boyd

361-585-0300

cherylyn@stonewaterproperties.com

www.stonewaterproperties.com

LARGE OFFICE SPACE AVAILABLE NOW



### The Unit

Located just off South Padre Island Drive, this recently renovated property offers office and warehouse space with strong exposure along a high-traffic corridor in Corpus Christi.

The unit features a large office layout with multiple private offices, breakrooms, and washrooms, with the flexibility to subdivide for a range of users.

Scan to Learn More



<b>Total Square Footage</b>	12,764 SF (approx.)
Suite B	5,420 SF
Suite C	7,344 SF
<b>Base Rent</b>	\$14.01 NNN
<b>Availability</b>	Immediate



# 4320 South Padre Island Dr.

## Suite B & C

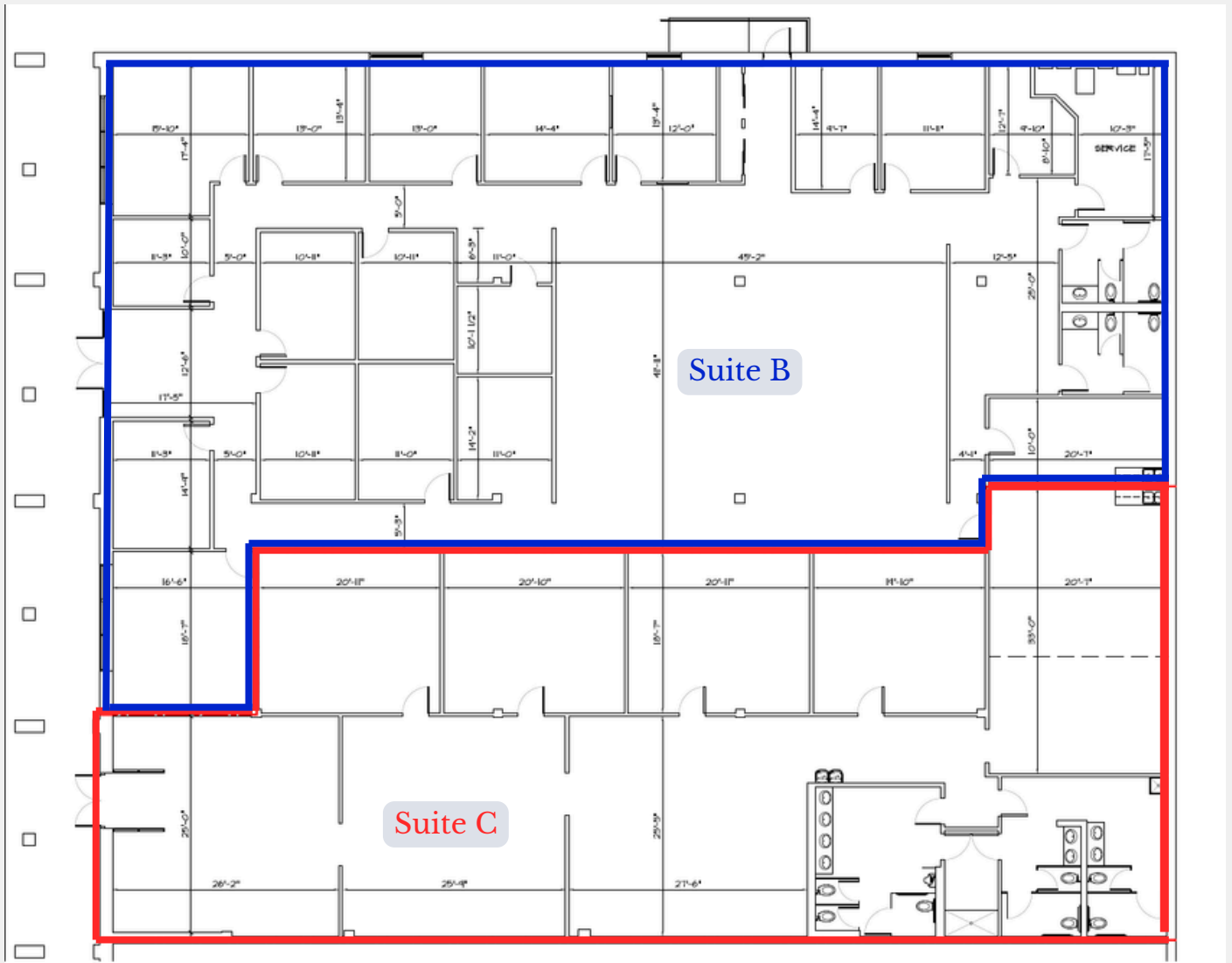


### FLOOR PLAN

Total Square Footage 12,764 SF (approx.)

Suite B 5,420 SF

Suite C 7,344 SF



Scan to Learn More



**Cherylyn Boyd**

361-585-0300  
cherylyn@stonewaterproperties.com

[www.stonewaterproperties.com](http://www.stonewaterproperties.com)