

7075 Dort Hwy

Grand Blanc, MI

- + 6.5 Miles to GM Flint Assembly Plant
- + 9 Miles to Bishop International Airport

Wartech Industrial Park



33,727 SF Suite Available Immediately

Contact Us

Lauren Scarpace

Vice Chairman

+1 248 351 2060

lauren.scarpace@cbre.com

Eugene Agnone III

Executive Vice President

+1 248 351 2024

eugene.agnone@cbre.com

Blake Burstein

Vice President

+1 248 936 6890

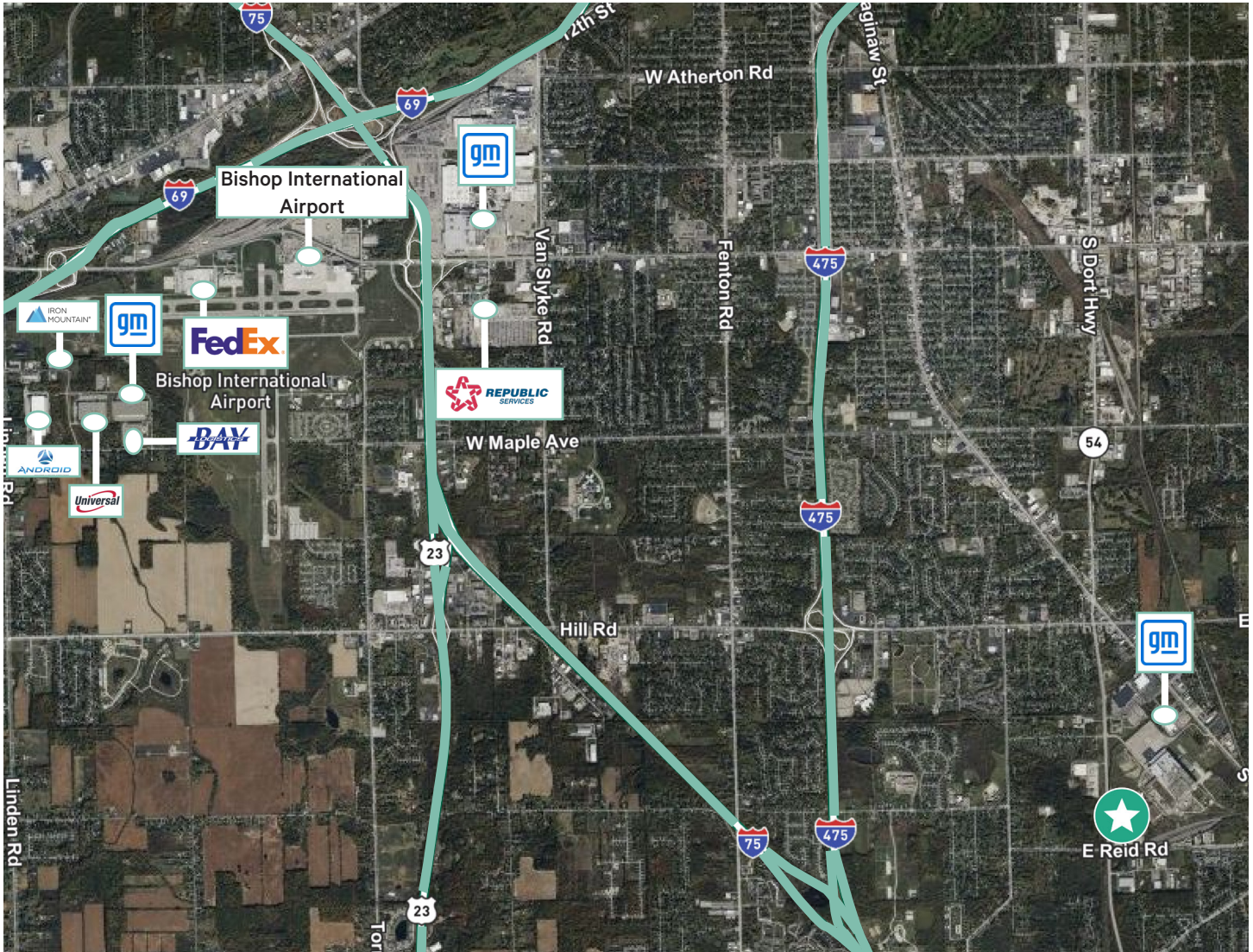
blake.burstein@cbre.com

Suite 200 Features

- + 33,727 SF Available Immediately
- + 1,000 SF of Office
- + \$5.50/SF NNN
- + Fully Fire Suppressed
- + 5 Truck Docks
- + 1 Grade Level Doors
- + Can Utilize 8+ Paved Acres
- + New Roof
- + 20' Clear
- + Competitive OPEX's
- + 1.5 Miles to I-75
- + 2.5 Miles to I-475



Local Aerial Map



Contact Us

Lauren Scarpace
Vice Chairman
+1 248 351 2060
lauren.scarpace@cbre.com

Eugene Agnone III
Executive Vice President
+1 248 351 2024
eugene.agnone@cbre.com

Blake Burstein
Vice President
+1 248 936 6890
blake.burstein@cbre.com

© 2025 CBRE, Inc. All rights reserved. This information has been obtained from sources believed reliable but has not been verified for accuracy or completeness. CBRE, Inc. makes no guarantee, representation or warranty and accepts no responsibility or liability as to the accuracy, completeness, or reliability of the information contained herein. You should conduct a careful, independent investigation of the property and verify all information. Any reliance on this information is solely at your own risk.