



# OFFICE SPACE FOR LEASE

## 22102 N. PEPPER RD LAKE BARRINGTON, IL



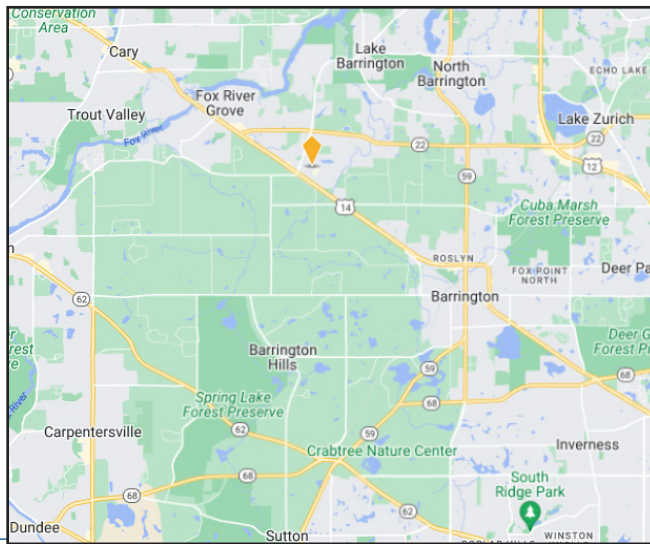
### BUILDING FEATURES:

- 7,600 SF Office Space Available For Lease
- Tenant Controlled HVAC & 24 hour access
- High End Finishes Throughout
- Elevator ID on 2nd Floor
- Move in condition or LL can buildout space to meet tenant needs
- Close Proximity to restaurants, coffee shops and recreation
- Easy Access to Northwest Highway (Route 14)
- Click on link in Brochure for 3-D Virtual Tour!
- **Rental Rate: \$16.25 PSF MG**

### AVAILABILITY:

SUITE	SIZE (SF)	Notes
Suite 200	7,600 SF	High End Office space for Lease

\*\* Reception Area, Conf Rooms, open areas, private offices kitchen, upgraded fixtures & more!!!



### FOR MORE INFORMATION:

RANDY OLCZYK  
Direct: 847.246.9611  
randy@chicagolandcommercial.com

RAY OKIGAWA  
Direct: 847.246.9632  
ray@chicagolandcommercial.com



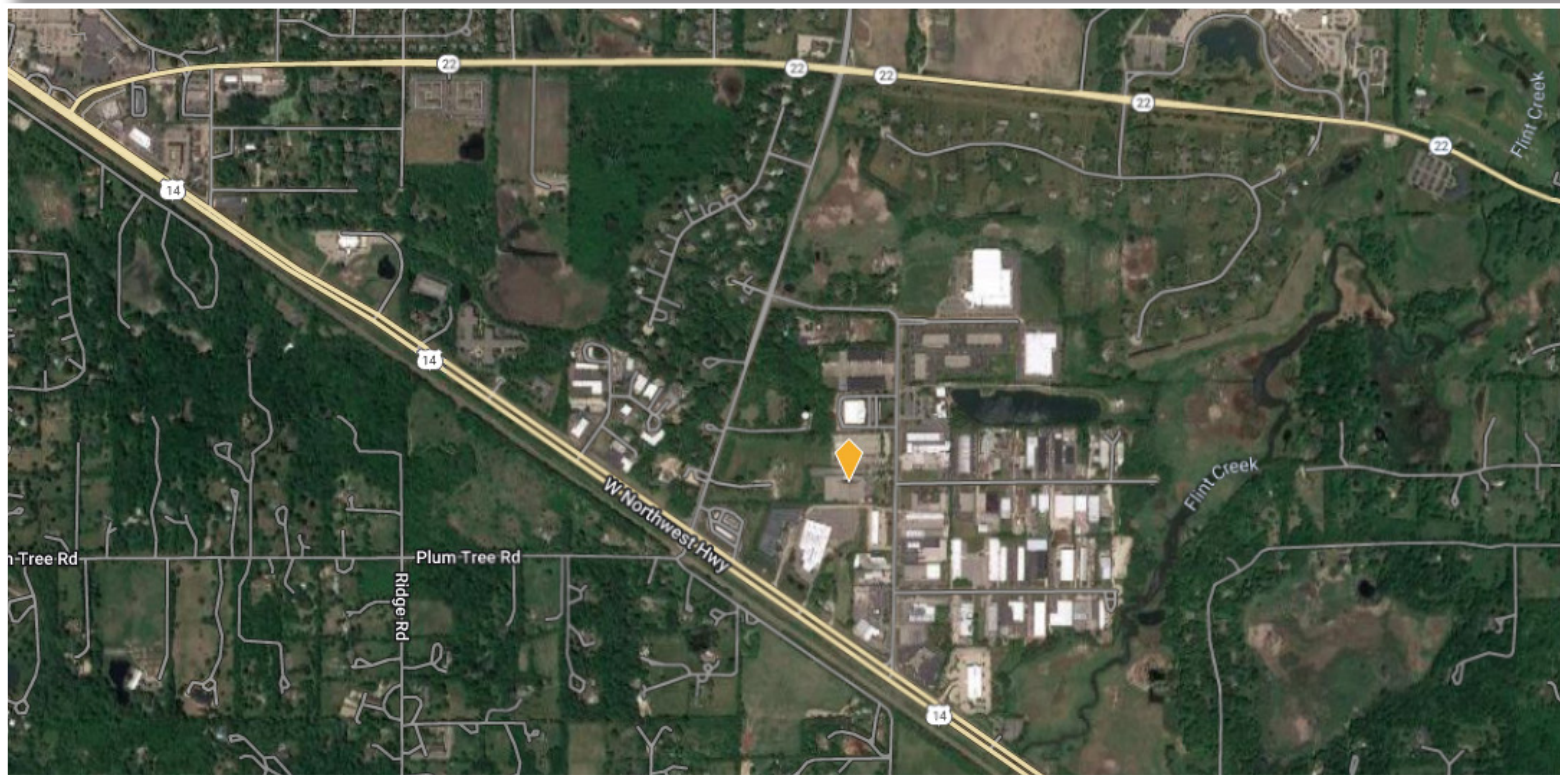
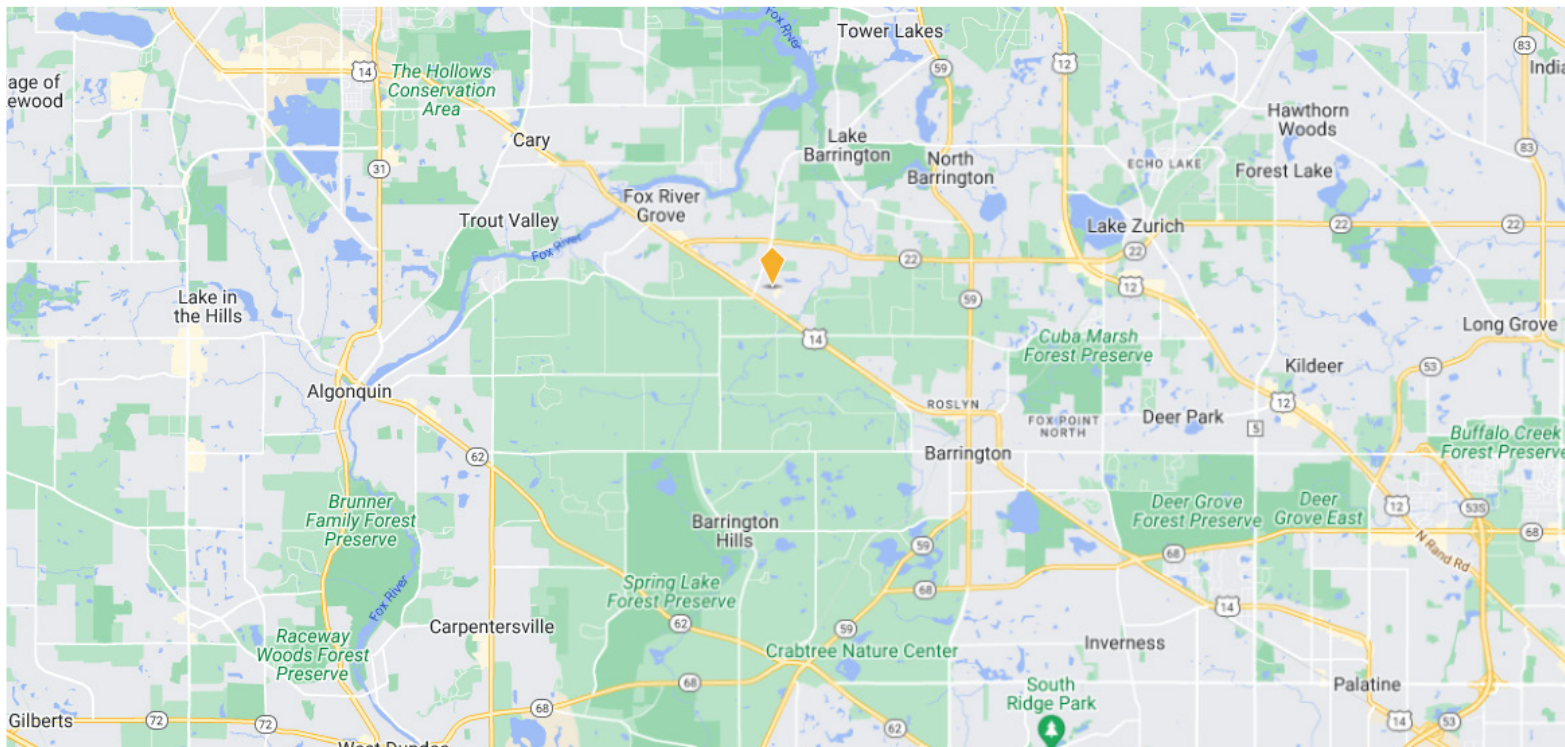
4811 Emerson Ave Suite 112 Palatine, IL 60067



# OFFICE SPACE FOR LEASE

## 22102 N. PEPPER RD LAKE BARRINGTON, IL

### AREA MAPS



### FOR MORE INFORMATION:

**RANDY OLCZYK**  
Direct: 847.246.9611  
randy@chicagolandcommercial.com

**RAY OKIGAWA**  
Direct: 847.246.9632  
ray@chicagolandcommercial.com



**Chicagoland**  
**Commercial**  
REAL ESTATE

4811 Emerson Ave. Suite 112, Palatine, IL 60067



# OFFICE SPACE FOR LEASE

22102 N. PEPPER RD LAKE BARRINGTON, IL

## BUILDING PHOTOS:



## FOR MORE INFORMATION:

RANDY OLCZYK  
Direct: 847.246.9611  
randy@chicagolandcommercial.com

RAY OKIGAWA  
Direct: 847.246.9632  
ray@chicagolandcommercial.com



4811 Emerson Ave Suite 112 Palatine, IL 60067

LEASING | SALES | TENANT ADVISORY | MANAGEMENT

[www.chicagolandcommercial.com](http://www.chicagolandcommercial.com)



# OFFICE SPACE FOR LEASE

22102 N. PEPPER RD LAKE BARRINGTON, IL

## BUILDING PHOTOS:



## FOR MORE INFORMATION:

RANDY OLCZYK  
Direct: 847.246.9611  
randy@chicagolandcommercial.com

RAY OKIGAWA  
Direct: 847.246.9632  
ray@chicagolandcommercial.com



4811 Emerson Ave Suite 112 Palatine, IL 60067

LEASING | SALES | TENANT ADVISORY | MANAGEMENT

[www.chicagolandcommercial.com](http://www.chicagolandcommercial.com)

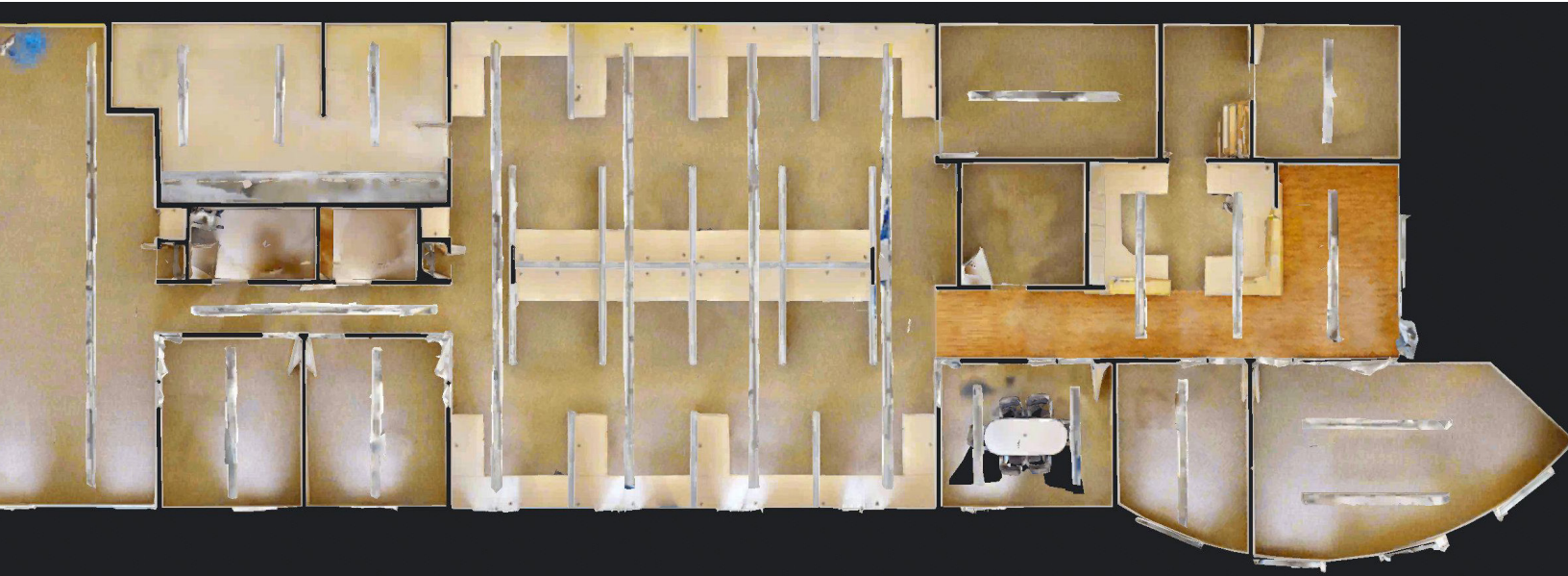


# OFFICE SPACE FOR LEASE

22102 N. PEPPER RD LAKE BARRINGTON, IL

FLOORPLAN SUITE 200 (7,600 SF)

High End Office space for Lease



## FOR MORE INFORMATION:

RANDY OLCZYK  
Direct: 847.246.9611  
randy@chicagolandcommercial.com

RAY OKIGAWA  
Direct: 847.246.9632  
ray@chicagolandcommercial.com



4811 Emerson Ave Suite 112 Palatine, IL 60067