

FOR LEASE

230-270 E Day Rd
Mishawaka, IN 46545



PROPERTY DETAILS



- **Prime Class A Medical Office Suites Available**
 - For Lease: Suite(s) 180-190: 5,754 SF (Divisible)
 - For Lease: Suite 255, 5,195 SF
- **Excellent visibility within Edison Lakes Corporate Park**
- **Less than 5 miles from I-80/90**
- **Easy access to: Day Rd, N Main St. and Edison Lakes Pkwy**
- **Individual monument signage available for each suite**
- **Ample on-site parking and includes patient drop-off area**
- **Less than 2 miles from St. Joseph Hospital**



CONTACT

R.J. Rudolph
VP, Brokerage
317.490.1026
RRudolph@cciin.com

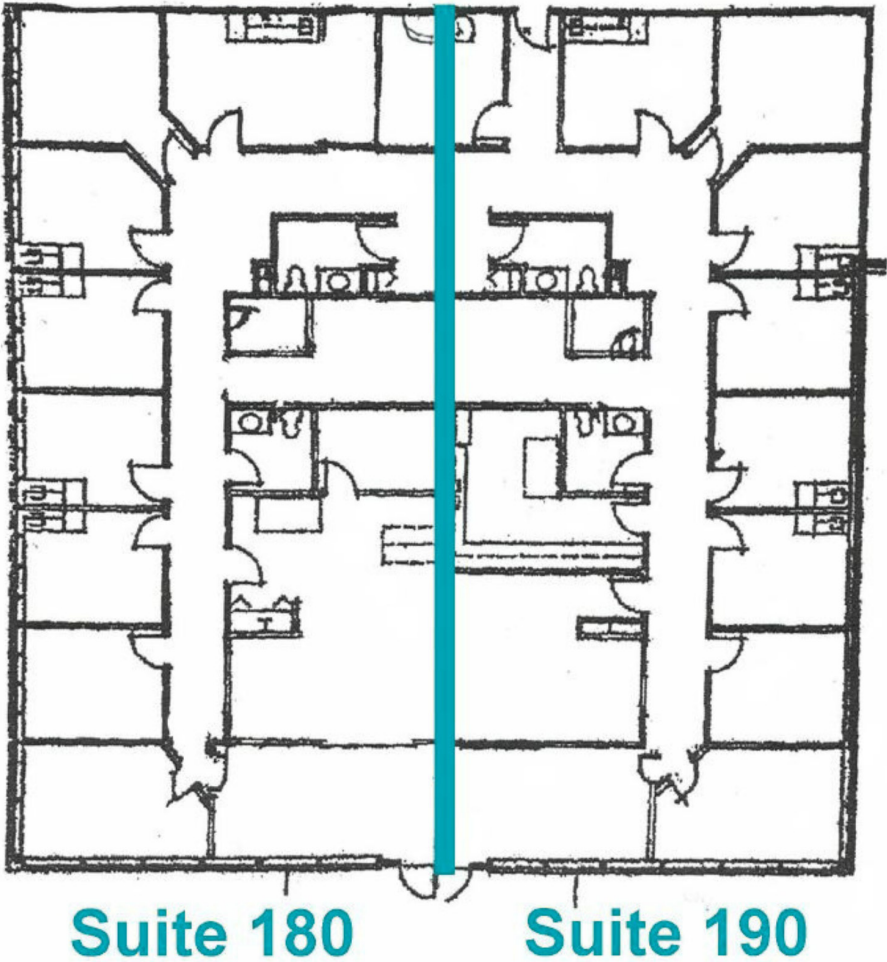
HQ: Cornerstone Companies, Inc.
8902 N Meridian Street, Suite 205
Indianapolis, IN | 317.841.9900
cornerstonecompaniesinc.com

FLOOR PLAN

230-270 E Day Rd
Mishawaka, IN 46545

////// Suite(s) 180-190 Available | 5,754 SF

Edison Lakes Medical Center Suite 180 - 190



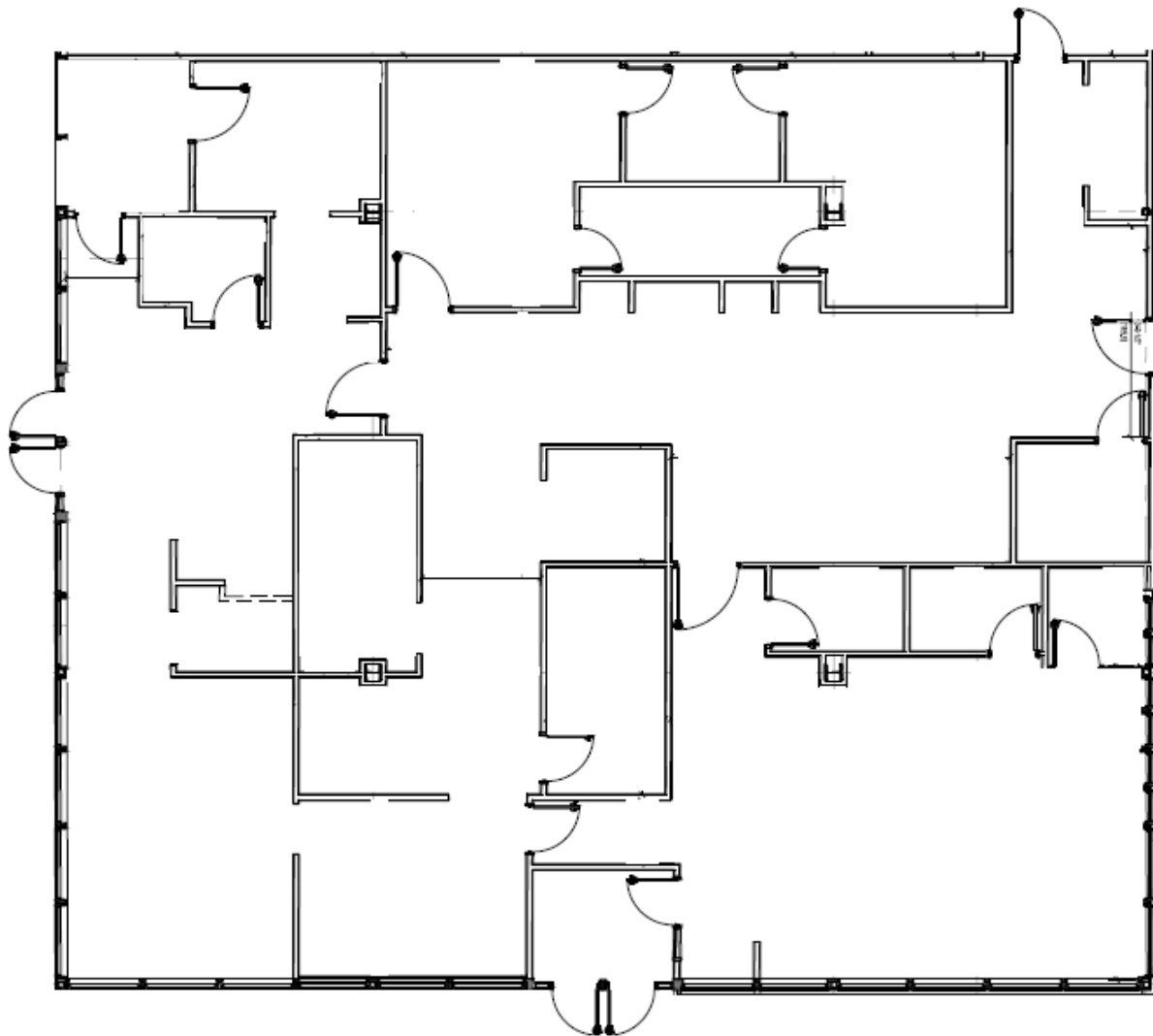
FLOOR PLAN

230 - 270 E Day Rd.

Mishawaka, IN 46545



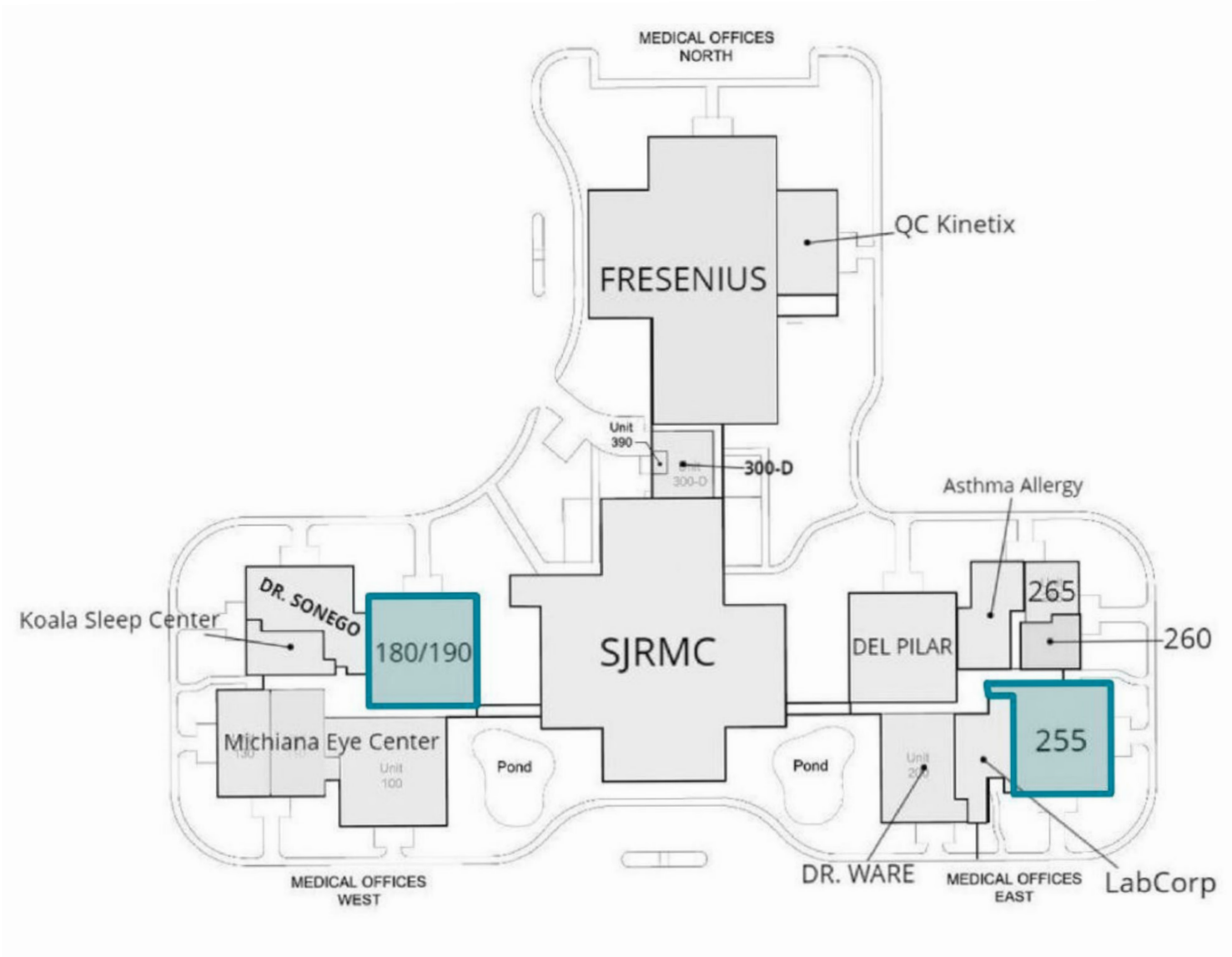
Suite 255 Available | 5,195 SF



Premises Overview

230 - 270 E Day Rd.

Mishawaka, IN 46545





St. Joseph Regional Medical Center

St. Joseph County VA Clinic

Rehabilitation Hospital
of Northern Indiana

Unity Physicians Hospital

Edison Lakes Pwky.


Edison Lakes Medical Center


Day Rd.


230-270 E DAY RD.


CORNERSTONE

DEMOGRAPHICS (5 - mile radius)

 69,262
Population

 34.5
Median Age

 29,204
Households

 54,136
Median House-
hold Income

 83,142
Average
Household
Income



 CONTACT

R.J. Rudolph
VP, Brokerage
317.490.1026
RRudolph@cciin.com

 CORNERSTONE

Cornerstone Companies, Inc.
8902 N Meridian Street, Suite 205
Indianapolis, IN 46260

