

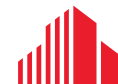
LEASE RATE: \$17.50/SF NNN
ESTIMATED NNN: \$4.43/SF



9,960 SF WAREHOUSE FOR LEASE

12670 COUNTY ROAD 25 1/2

FORT LUPTON, CO



CUSHMAN &
WAKEFIELD



URC
UREALTY COMMERCIAL

12670 COUNTY ROAD 25 1/2

FORT LUPTON, CO

LEASE RATE: \$17.50/SF NNN
ESTIMATED NNN: \$4.43/SF

12670 County Road 25 1/2 features 9,960 square feet four 14'x14' drive-in doors, 22-foot clear height, and a fenced yard. The property is conveniently located just off of Highway 85 between Platteville and Fort Lupton. Please contact the listing brokers for additional information.

Property Details

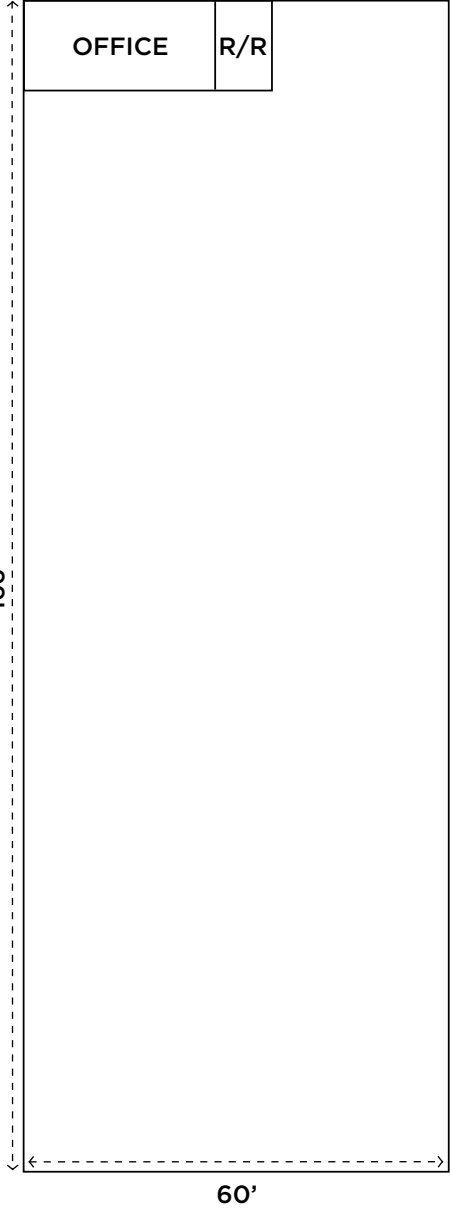
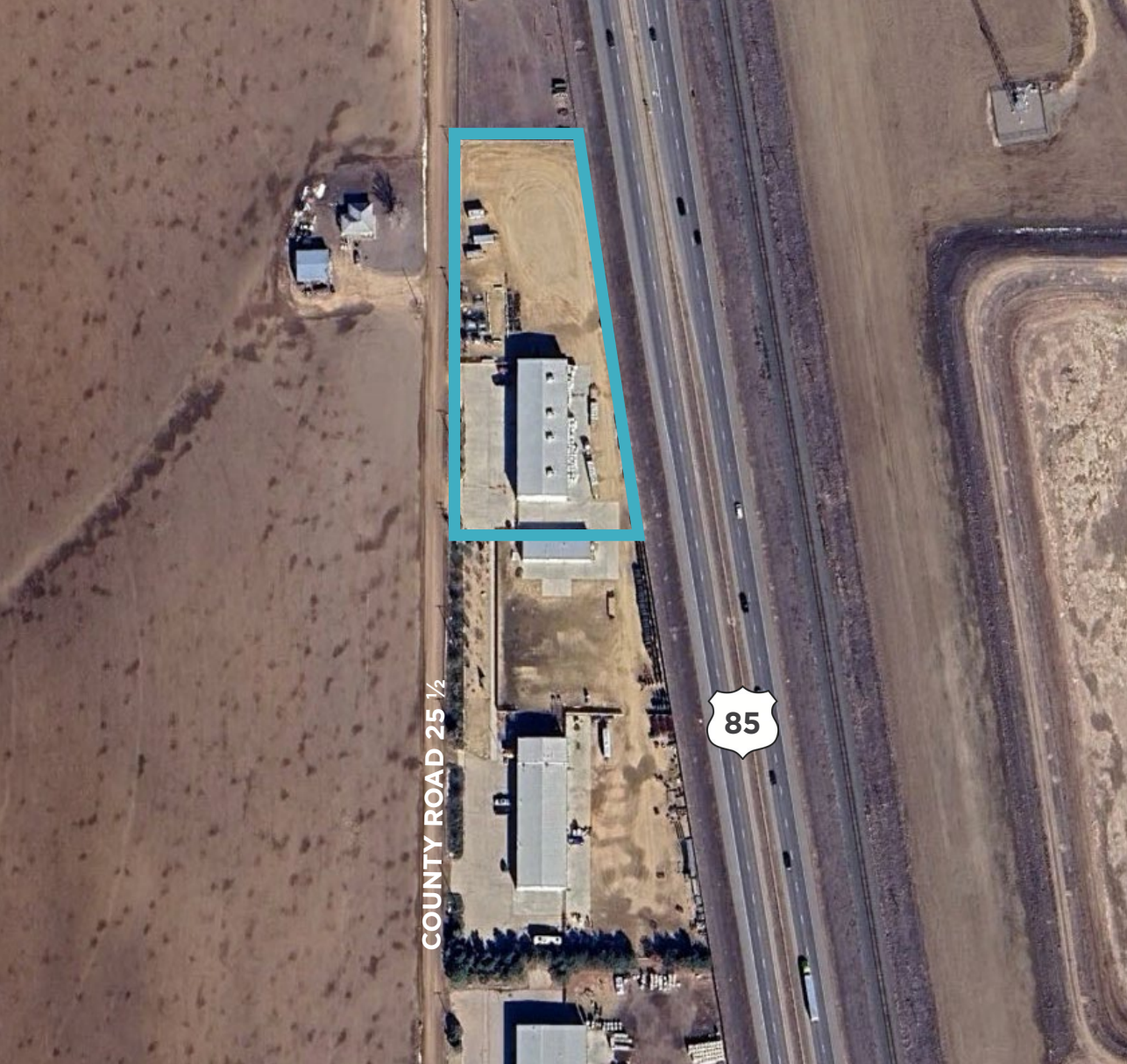
Total Building Size:	9,960 SF
Year Built:	2012
Loading:	(4) 14' x 14' Overhead Doors
Fenced Yard Size:	Approx. 1.5 Acres
Total Land Size:	Approx. 2.4 Acres
Zoning:	A (Agricultural)
Power:	3-Phase, 480 Volt, 400 Amps
Clear Height:	22'



12670 COUNTY ROAD 25 1/2

FORT LUPTON, CO

Aerial & Floor Plan





12670 COUNTY ROAD 25 1/2

FOR MORE INFORMATION, CONTACT:

TRAVIS ACKERMAN
Executive Managing Director
+1 970 267 7720
travis.ackerman@cushwake.com

MATT HASKELL
Broker/Owner
+1 970 690 1690
mhaskell@urealtyinc.com

772 Whalers Way, Suite 200
Fort Collins, CO 80525
+1 970 776 3900
cushmanwakefield.com

©2026 Cushman & Wakefield. All rights reserved. The information contained in this communication is strictly confidential. This information has been obtained from sources believed to be reliable but has not been verified. NO WARRANTY OR REPRESENTATION, EXPRESS OR IMPLIED, IS MADE AS TO THE CONDITION OF THE PROPERTY (OR PROPERTIES) REFERENCED HEREIN OR AS TO THE ACCURACY OR COMPLETENESS OF THE INFORMATION CONTAINED HEREIN, AND SAME IS SUBMITTED SUBJECT TO ERRORS, OMISSIONS, CHANGE OF PRICE, RENTAL OR OTHER CONDITIONS, WITHDRAWAL WITHOUT NOTICE, AND TO ANY SPECIAL LISTING CONDITIONS IMPOSED BY THE PROPERTY OWNER(S). ANY PROJECTIONS, OPINIONS OR ESTIMATES ARE SUBJECT TO UNCERTAINTY AND DO NOT SIGNIFY CURRENT OR FUTURE PROPERTY PERFORMANCE. PD-169997-V6

