

MEDICAL OFFICE SPACE FOR SALE OR LEASE



WHAT MATTERS TO YOU >

LOCATION

JUST STEPS FROM INOVA
LOUDON HOSPITAL

SIZE

2,723 SF

19490 SANDRIDGE WAY

SUITE 70
LEESBURG, VA 20176

ADDITIONAL FEATURES

- Fully built out modern medical suite, including four exam rooms with sinks, multiple offices, two procedure rooms, waiting/reception area, in suite restroom and staff lounge
- Ample free surface level parking available via surface level parking lot
- Professionally managed medical condominium building
- Easy access to Route 7
- Flexible lease terms



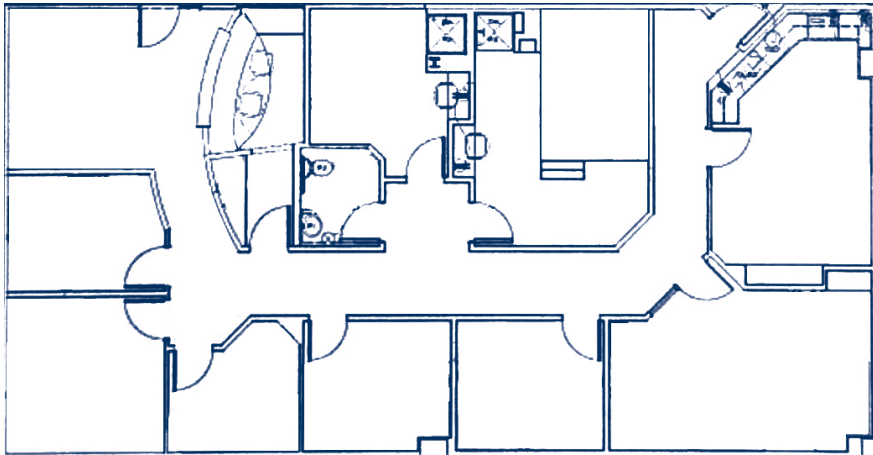
3 Bethesda Metro Center, Suite 700 // Bethesda, MD 20814
301.235.1300 // gzrealty.net

CONTACT US TODAY

J. WINSTON WILLIAMS, III
WINSTON@GZREALTY.NET

ANDREW PAPANTONIOU
ANDREW@GZREALTY.NET

Suite 70 | 2,723 SF



3 Bethesda Metro Center, Suite 700 // Bethesda, MD 20814
301.235.1300 // gzrealty.net

CONTACT US TODAY

J. WINSTON WILLIAMS, III
WINSTON@GZREALTY.NET

ANDREW PAPANTONIOU
ANDREW@GZREALTY.NET