


**BERKSHIRE
HATHAWAY** | UTAH
HOMESERVICES | PROPERTIES

COMMERCIAL DIVISION



BEAUTIFUL SPACE AVAILABLE ON HEBER CITY MAIN STREET
Office/Retail/Medical

HEBER CITY 150 N MAIN STREET | HEBER CITY, UTAH 84032

JILL SNYDER
(435) 671-0793
jill@utahcre.com

TODD MCLACHLAN
(801) 520-9005
todd@utahcre.com

CHELSEA WALL
(435) 671-3541
chelsea@utahcre.com

FOR LEASE

- SECOND FLOOR OFFICE SPACE AVAILABLE
- 4,141 SF OF LOWER LEVEL SUITES AVAILABLE
- AMPLE OFF-STREET PARKING
- EXCELLENT VISIBILITY

PROPERTY DETAILS

FOR LEASE 150 N MAIN STREET | HEBER CITY, UTAH 84032



SECOND FLOOR

FOR LEASE 150 N MAIN STREET | HEBER CITY, UTAH 84032



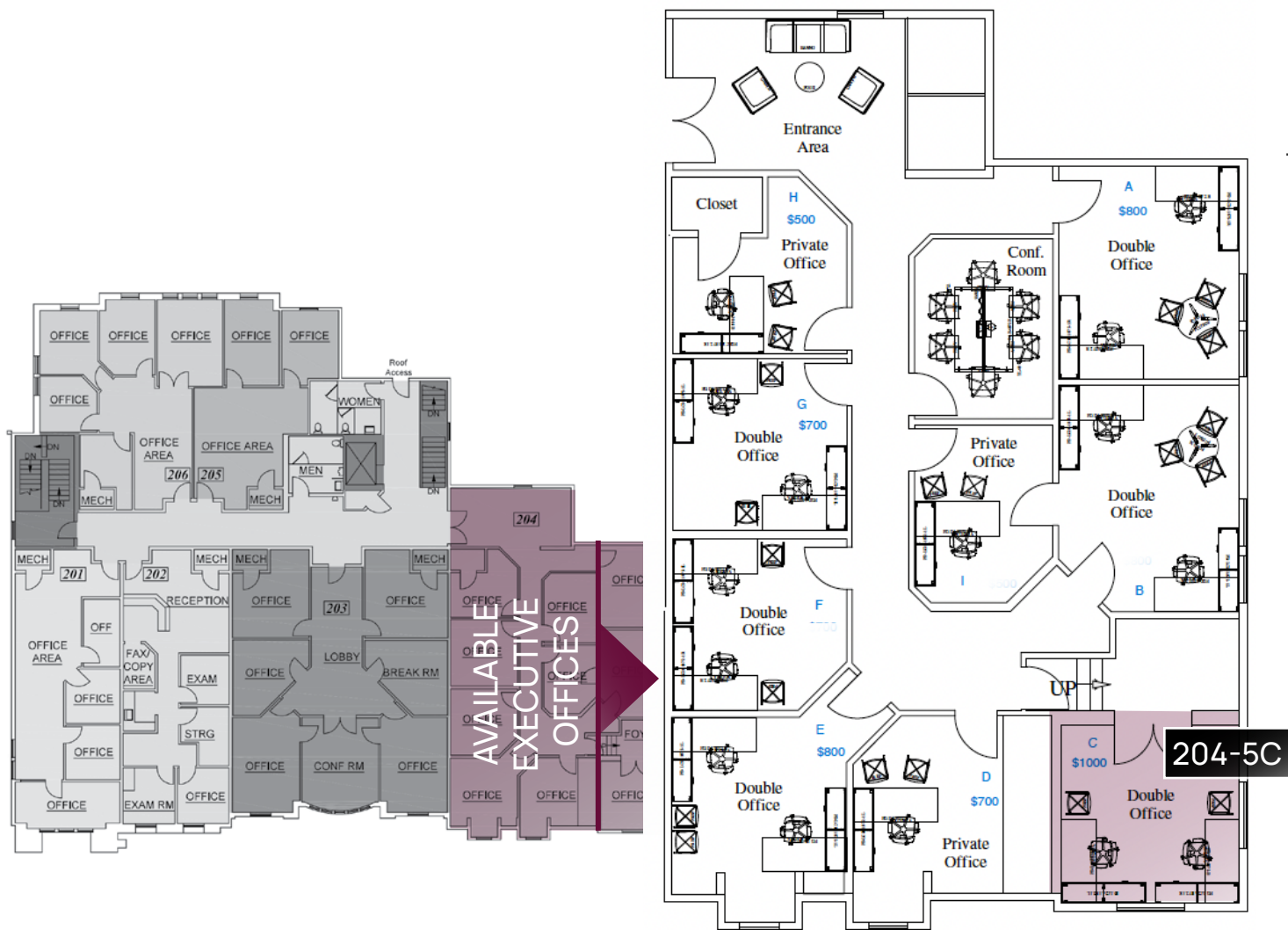
SECOND FLOOR
\$25 PSF NNN + \$7.16 CAM

- SUITE 206* : 1,273 SF

(*available on 03/01/2026)

SECOND FLOOR EXECUTIVE SUITE

FOR LEASE 150 N MAIN STREET | HEBER CITY, UTAH 84032



SECOND FLOOR EXECUTIVE OFFICES

- 204-5C*
\$1,000/MONTH FULL SERVICE

LEASED
 AVAILABLE

BASEMENT FLOOR

FOR LEASE 150 N MAIN STREET | HEBER CITY, UTAH 84032



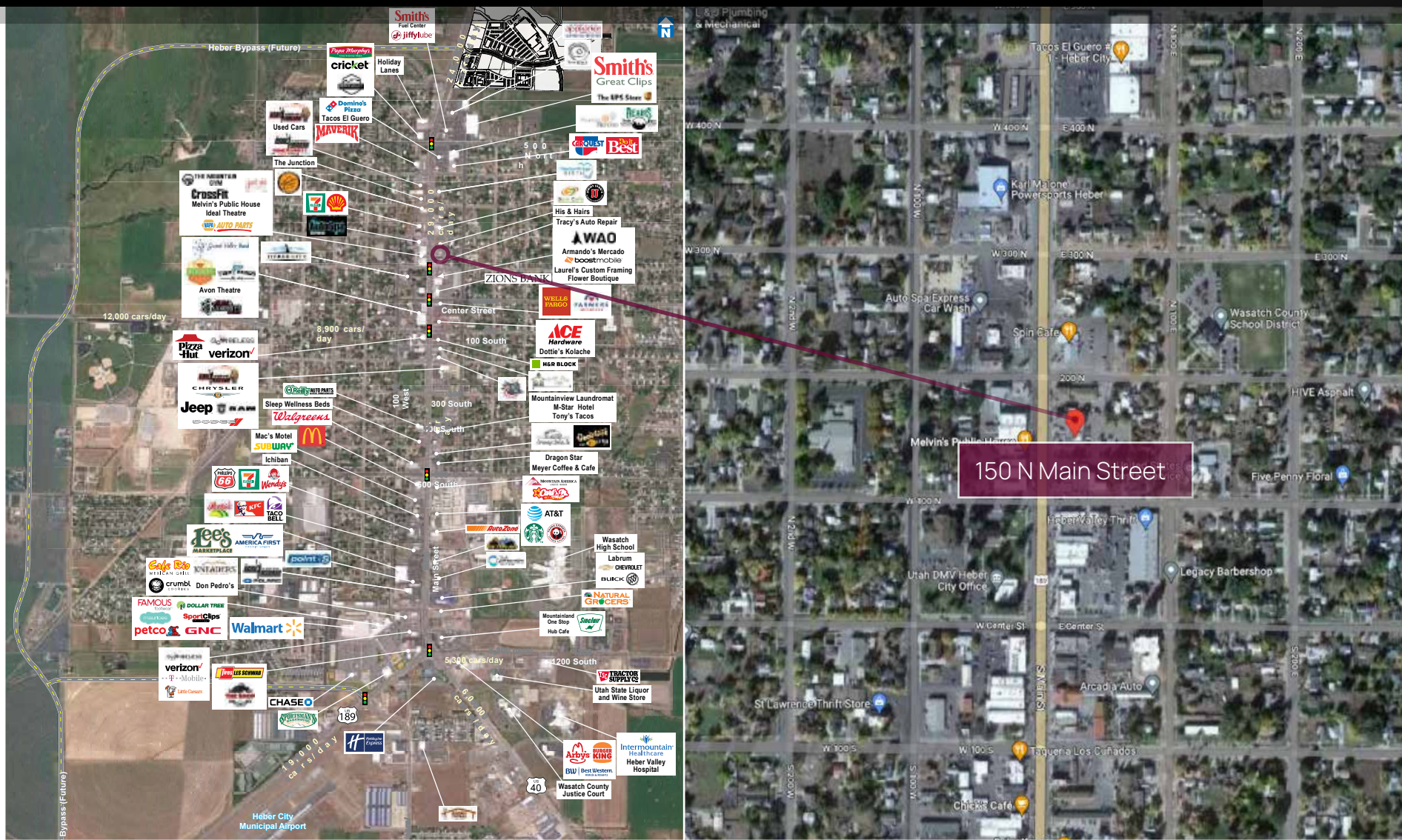
BASEMENT FLOOR

- B100-A: 3,246 SF
 \$15 PSF NNN + \$7.16 CAM
- 7 EXECUTIVE STUDIO OFFICES
 \$650/MONTH FS

	LEASED
	AVAILABLE

LOCATION

FOR LEASE 150 N MAIN STREET | HEBER CITY, UTAH 84032





FOR LEASE
150 N MAIN STREET
HEBER CITY, UTAH 84032

- SECOND FLOOR
 - 206 : \$25 PSF NNN + \$7.16 CAM
(Available 03/1/2026)
- SECOND FLOOR EXECUTIVE SUITE
 - 204-5C : \$1,000/Month FS
- BASEMENT SUITES
 - B100-A : 3,246 SF
\$15 PSF NNN + \$7.16 CAM
 - 6 Executive Studio Offices
\$650/Month FS
- Recently renovated
- Ample off-street parking
- Excellent visibility on Heber Main Street
- Strong tenant-mix
 - Edward Jones
 - First American Title
 - Wasatch Wellness

i

BHHSUTAH.COM

JILL SNYDER
(435) 671-0793
jill@utahcre.com

TODD MCLACHLAN
(801) 520-9005
todd@utahcre.com

CHELSEA WALL
(435) 671-3541
chelsea@utahcre.com

**BERKSHIRE
HATHAWAY** | UTAH
HOMESERVICES | PROPERTIES

COMMERCIAL DIVISION