



Space Profile for

Unit: #0048

Area: 900 sq ft

Address

4200 S. East Street Suite 48

Indianapolis, IN 46227



601 S. Harbour Island Blvd., Suite 109

Tampa, FL, 33602

Unit # 48
Ground Floor
+/- 900 SF

Gross square footage was measured on-site and adheres to BOMA standards

Width
+/- 20'

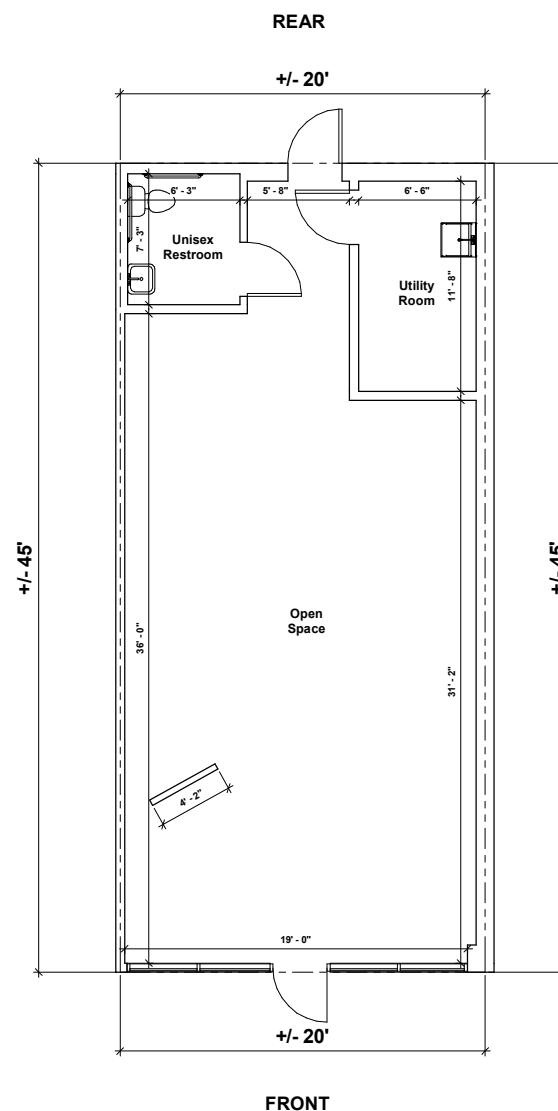
Depth
+/- 45'

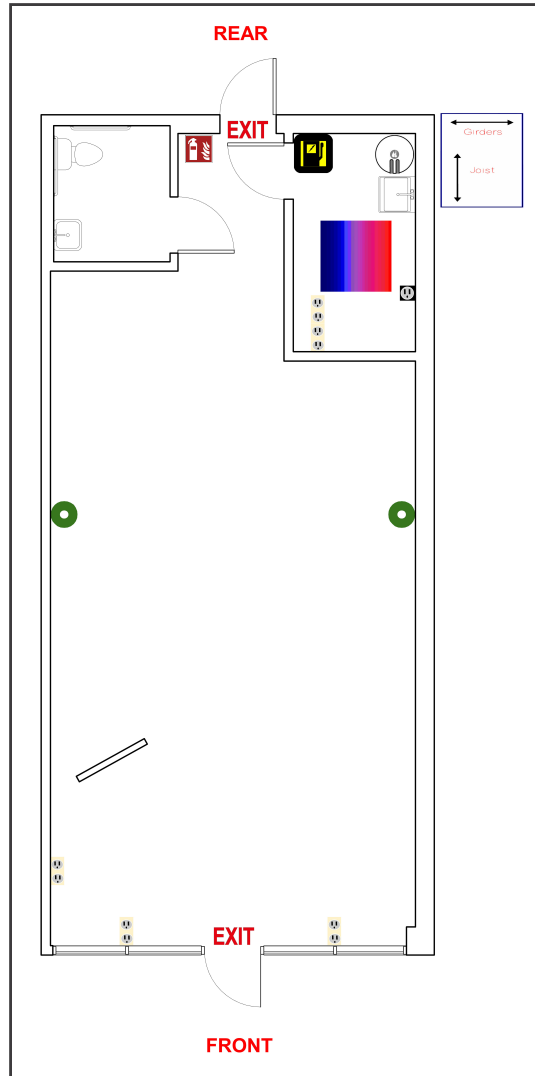
Revisions

Floor Plan
Prepared 06/08/2023
Unit # 48

Plans Produced by:
ID PLANS

400 North Tampa St. Suite 2210
Tampa, FL 33602
Phone: (866) 657-2545
idplans.com





Legend

	Breaker Panel		Fire Extinguisher		Ceiling Fan w/ Light		Fire Sprinkler
	Circular Column		Fire Alarm Pulldown		Rectangular Column		Pocket Door
	Appliance Outlet		Glass Door		Refrigerator		Track Lighting
	Fire Alarm		Handicap Handrail		Roll-Up Door		2-Bulb Fluorescent Lighting
	Drinking Fountain		Roof Hatch		Sink		3-Bulb Fluorescent Lighting
	Door		HVAC Unit		Swing Door		4-Bulb Fluorescent Lighting
	Double Hung Door		Recessed Light		Toilet		Ceiling Air Vent
	Electrical Outlet		Staircase		Can Light		Air Diffuser
	Emergency Light		Water Heater		Urinal		Ceiling Fan w/o Light
	EXIT Light		Telephone Panel		Thermostat		Air Handler
	Tankless Water Heater		Window Wall Opening		RJ 45		Fire Alarm Control Panel
	Step Down Transformer		Maintenance Sink		Window		Tenant Water Meter
	Disconnect		Sub Water Meter		House Gas Meter		Sub Gas Meter
	House Water Meter		Air Handler		House Electric Meter		Tenant Electric Meter
	Tenant Gas Meter						
	Sub Electric Meter						



Space Overview

Overview	Actual Square Footage	Measured Depth of Space	Has Stepdown Transformer
	900 SQFT	45' 1"	No

Thickness	Front Wall	Rear Wall	Left Wall	Right Wall
	0' 6"	0' 7"	0' 6"	1' 0"

Flooring	Concrete	Carpet	Tile	Other	Unit	Total
				827.39 SQFT	900 SQFT	827.39 SQFT

Ceiling Information	Height From Floor To Ceiling	Height From Floor To Bottom Of Deck	Height From Floor To Bottom Of Joist
	Front: 9' 10" Back: 9' 10"	Front: 20' 5" Back: 13' 10"	Front: 11' 7" Back: 11' 9"

Ceiling Information Cont.	Clear Ceiling Height
	9' 10"

Mechanical

HVAC	Reference	Manufacturer	Model	Serial	Tonnage	Year	Notes
	1		INTERNATIONAL COMFORT PRODUCTS	RGS060HECADAAAAA-	C142463521	5	2014

Electric

Disconnect	Reference	Amps	Location	UL Number	Manufacturer	Handle or Breaker	Notes
	1	200	Open Space	Not Listed	EATON	Breaker	

Electric Meter	Reference	Meter #	Location	Meter Reading	Read On	Voltage	Notes
	1	1212548	Rear Exterior				

Service Panel	Reference	Amps	Service Type	Panel Type	Panel UL Number	Manufacturer	Location	Notes
	1	200	Not Listed	Not Listed	Not Listed	EATON	Open Space	

IDPlans does not provide an Ampacity Report

Plumbing

Backflows	Number of Backflows	Location	Size	Notes
	0	NA	NA	

Water Fountains	Number of Water Fountains	Location	Notes
	0	N/A	No Water Fountains

Water Heater	Reference	Manufacturer	Model	Serial	Gallons	Tank	Tankless	Water Line (in)	Location	Notes
	1	Rheem	PRO3502RH91	RHQ291428219	49	Yes	No	1/2"		Utility Room

Water Meter	Reference	Meter #	Location	Meter Size	Line Size	Notes
	1	13108151	Rear Exterior	5/8 inch	5/8 inch	

Waste

No assets available for this section.

Fire

Fire Extinguisher	Number of Fire Extinguishers	Notes
	1	

Sprinkler Heads	Sprinkler Heads Present	Sprinkler Head Type	Riser Located in Space	Riser Location	Additional Information
	6		No		

Gas

Gas Meter	Reference	Meter #	Location	Size	Notes
	1	576435	Rear Exterior	1/2 inch	

Room

Restroom	Unit	Description
	Restroom 1	Unisex Restroom

Storefront 1

