



## 501 Sumner St

501 Sumner St, Honolulu, HI 96817



**Duane Shimogawa**

Avalon Commercial LLC

800 Bethel St, Suite 501, Honolulu, HI 96813

[ds@avalonhi.com](mailto:ds@avalonhi.com)

(808) 587-7770



## 501 Sumner St

Upon Request



Rental Rate: Upon Request

Property Type: Industrial

Property Subtype: Warehouse

Rentable Building Area: 232,019 SF

Year Built: 1967

Rental Rate Mo: Upon Request

## 2nd Floor Ste 421

1

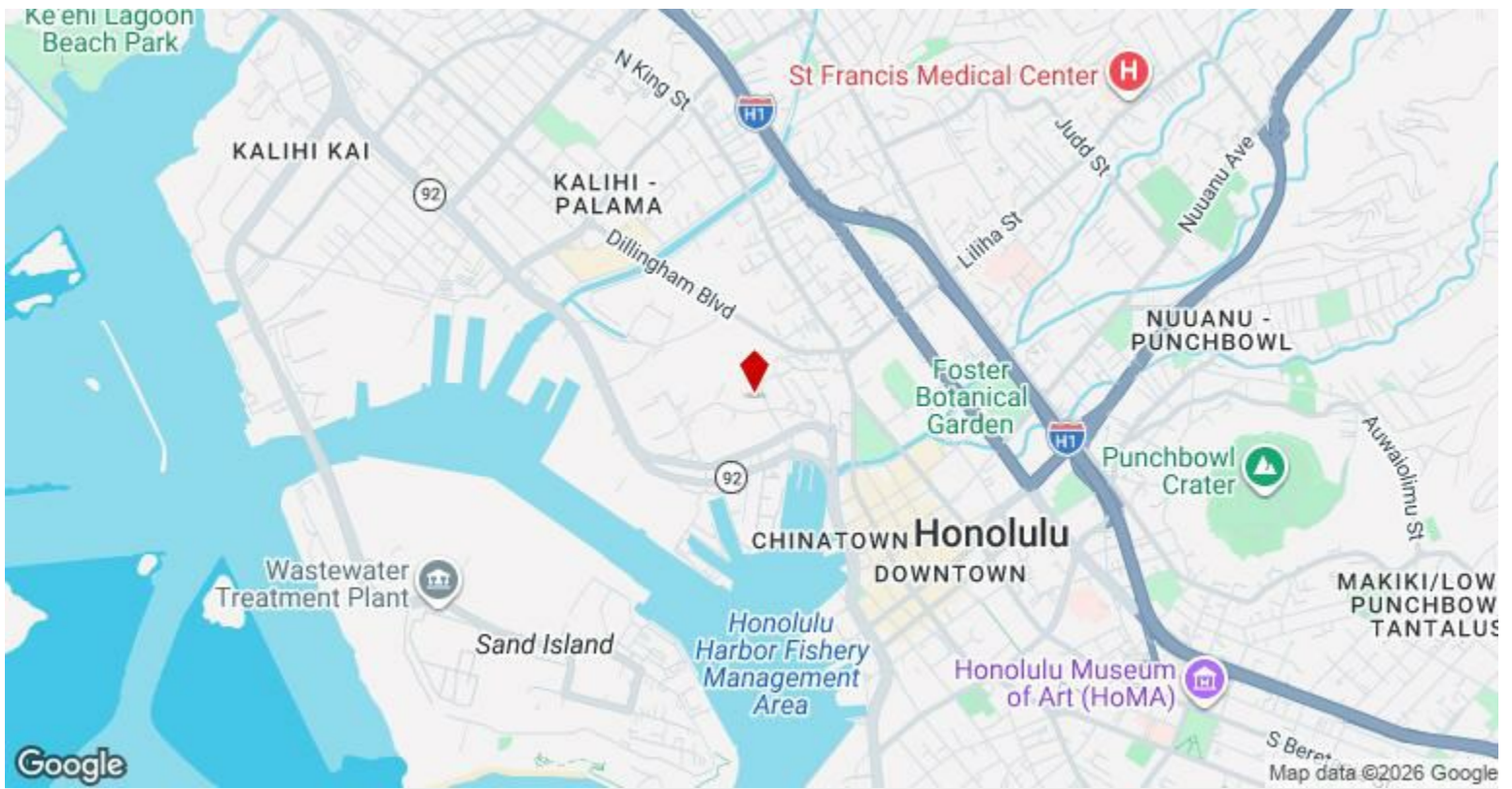
Space Available	5,322 SF
Rental Rate	Upon Request
Date Available	August 01, 2026
Service Type	Triple Net (NNN)
Space Type	Relet
Space Use	Industrial
Lease Term	Negotiable

---

## Major Tenant Information

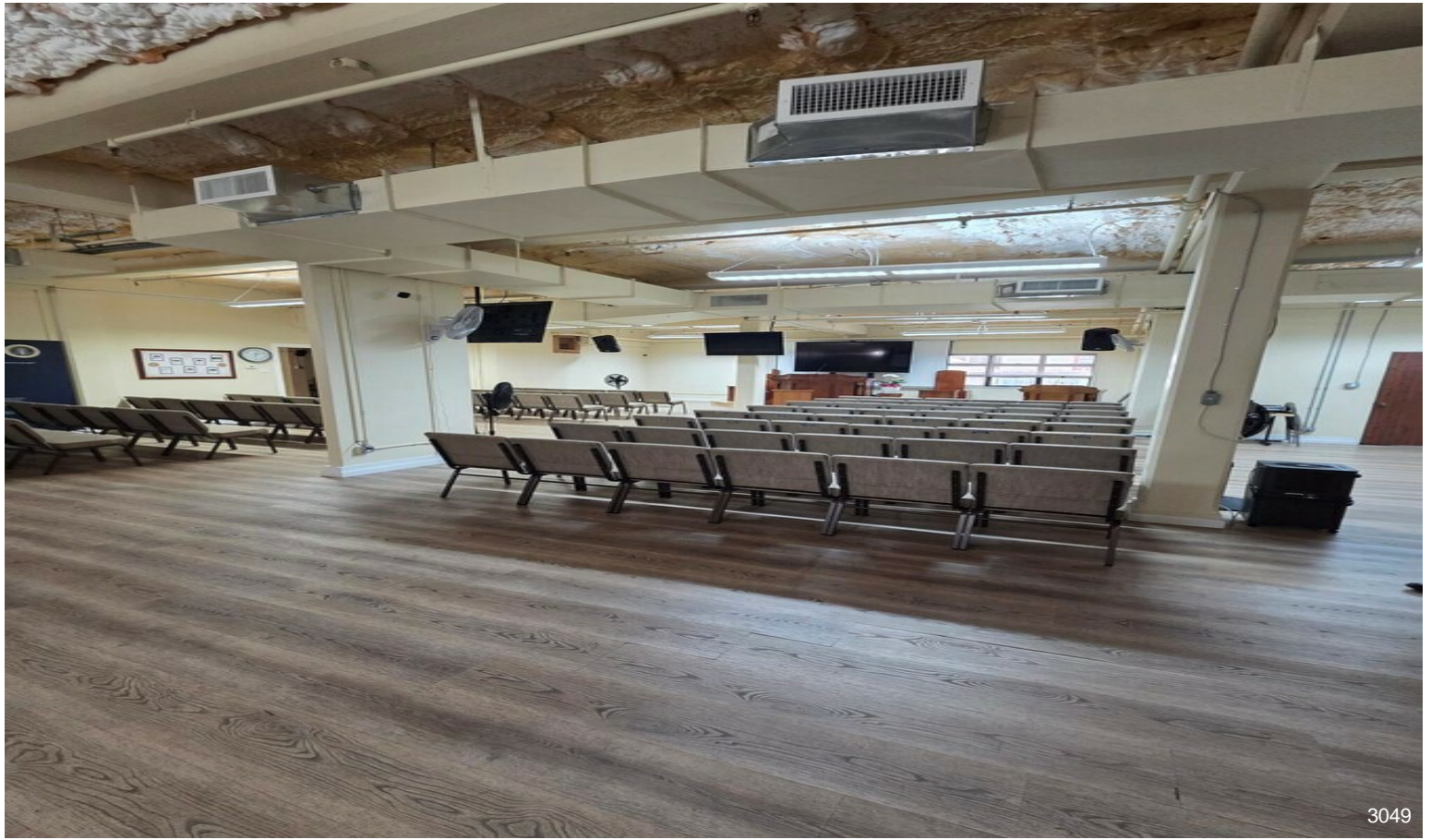
---

<b>Tenant</b>	<b>SF Occupied</b>	<b>Lease Expired</b>
A & A Motor Werkes LLC	-	
Acutron LLC	-	
Aloha Hawaii Lei	-	
Arkus, Bob Custom Upholstery Inc	-	
Austin, Tsutsumi & Associates, Inc	-	
HAWAII LOCAL 665	-	
IATSE Local 665	-	
Mechanical Enterprises Inc	-	
NTS Unitek	-	
SSFM International, Inc.	-	

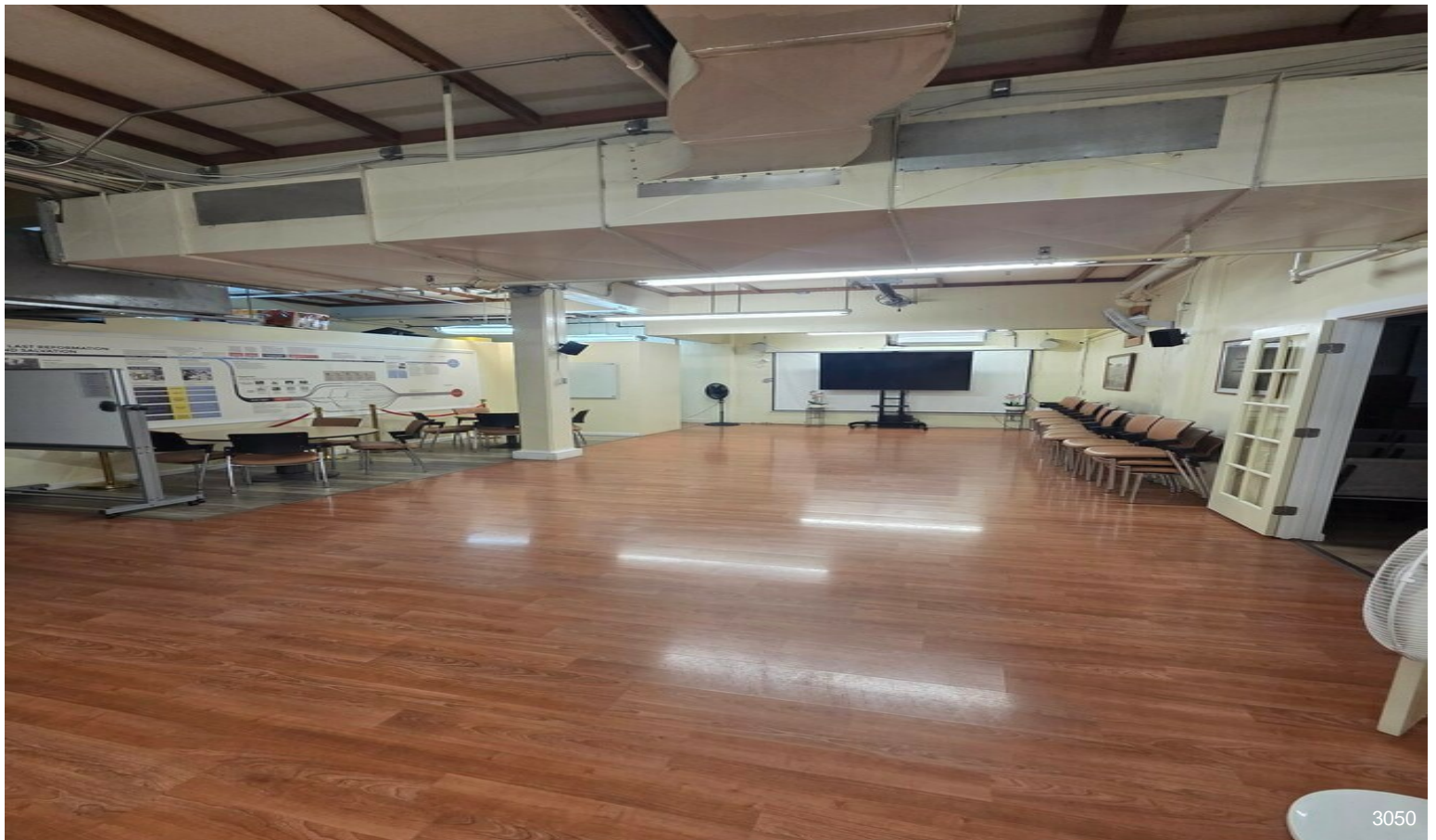


501 Sumner St, Honolulu, HI 96817

# Property Photos



3049

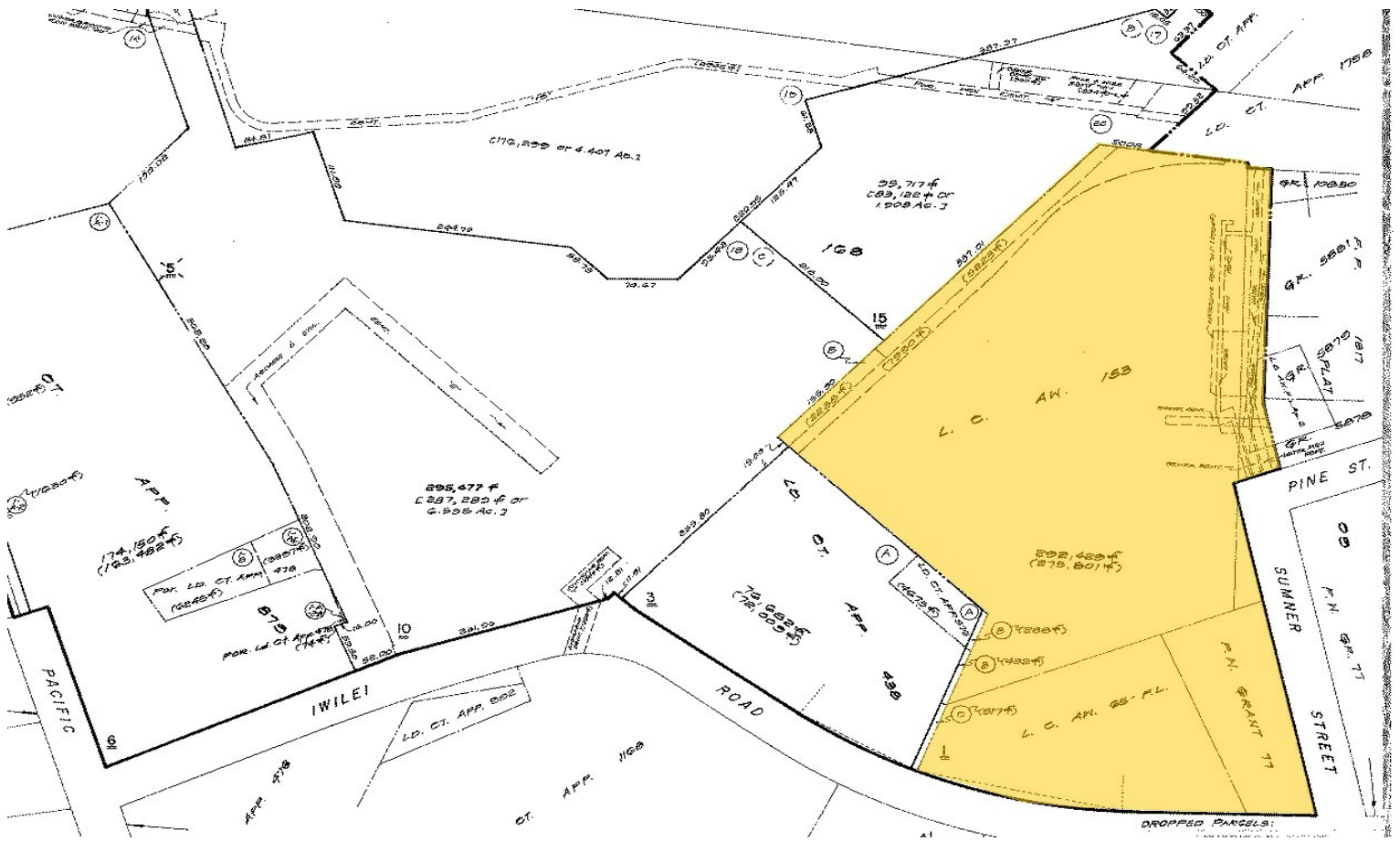


3050

# Property Photos



# Property Photos



Building Photo

# Property Photos



Building Photo



Aerial

# Property Photos



# Property Photos

