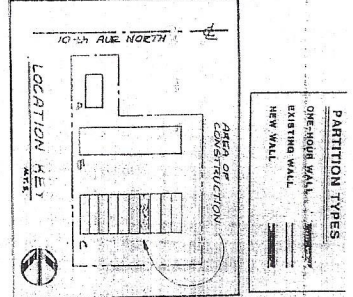
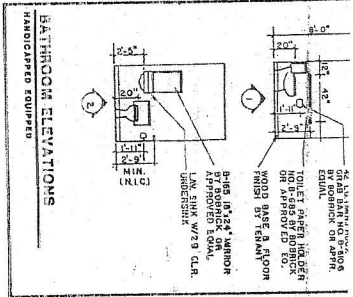
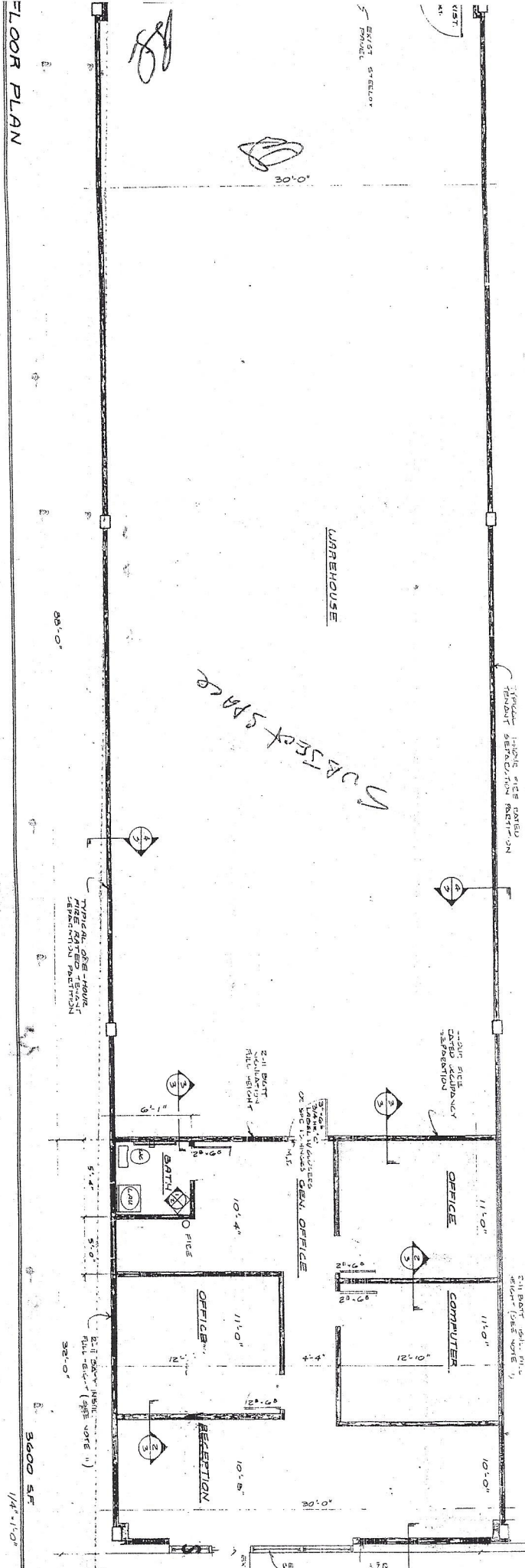


1979
3,600 SF

FLOOR PLAN



1. All components, general, non-structural, shall be installed in accordance with the applicable code requirements.
2. All components shall be installed in accordance with the applicable code requirements.
3. All components shall be installed in accordance with the applicable code requirements.
4. All components shall be installed in accordance with the applicable code requirements.
5. All components shall be installed in accordance with the applicable code requirements.
6. All components shall be installed in accordance with the applicable code requirements.
7. All components shall be installed in accordance with the applicable code requirements.
8. All components shall be installed in accordance with the applicable code requirements.
9. All components shall be installed in accordance with the applicable code requirements.
10. All components shall be installed in accordance with the applicable code requirements.
11. All components shall be installed in accordance with the applicable code requirements.
12. All components shall be installed in accordance with the applicable code requirements.
13. All components shall be installed in accordance with the applicable code requirements.
14. All components shall be installed in accordance with the applicable code requirements.
15. All components shall be installed in accordance with the applicable code requirements.
16. All components shall be installed in accordance with the applicable code requirements.
17. All components shall be installed in accordance with the applicable code requirements.
18. All components shall be installed in accordance with the applicable code requirements.
19. All components shall be installed in accordance with the applicable code requirements.
20. All components shall be installed in accordance with the applicable code requirements.