

VS-265 | RETAIL SUITE | 805 SF

CASCADE VILLAGE SHOPPING CENTER



Located next to Bank of America and Crumbl Cookies



\$36/SF/Yr. NNN

NB NEVILLE & BUTLER
Commercial Real Estate

Steven Neville, Broker
Natalie Butler, Broker
696 McVey Ave., Ste. 202 | Lake Oswego, OR 97034
503.241.1222 | www.nevillebutler.com

COMPASS
COMMERCIAL
REAL ESTATE
SERVICES

Russell Huntamer, CCIM
Eli Harrison, Broker
600 SW Columbia St., Ste. 6100 | Bend, OR 97702
541.383.2444 | www.CompassCommercial.com



T-Mobile

VS-265 | 805 SF | \$36/SF/YR. NNN

Cascade Village Shopping Center is an approximately 367,000 square foot open-air center situated at the gateway to Bend, Oregon. Located at the confluence of Highways 20 and 97 on Bend's north end, the center has exposure to over 67,680 cars per day (ODOT 2023) and recorded 3.5 million visits in 2025, a 5.6% increase year over year and 13.1% over three years, compared to 2.9 million visits at Costco across the street.

SUITE DESCRIPTION

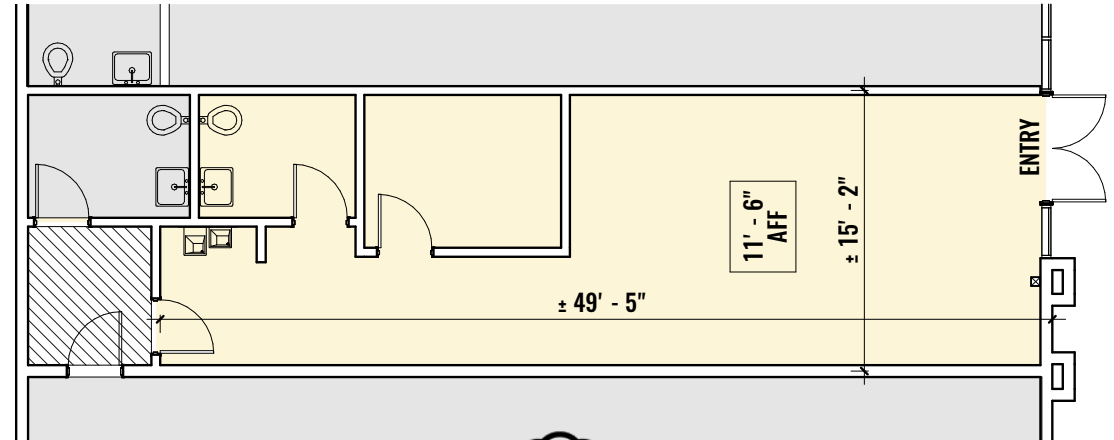
This in-line retail suite is located at the main entrance to the shopping center in a high visibility and traffic location. The space has an open layout and includes an office and private restroom making it ideal for a variety of retail users.

VILLAGE PLAZA

The nearby Village Plaza is the center's social hub offering a welcoming outdoor seating area and a charming plaza area for families and friends to gather.

SUITE HIGHLIGHTS

- In-line retail space facing Business Hwy 97
- In-suite office and restroom
- Located between Crumbl Cookies and T-Mobile
- Open field parking in front space
- 200-Amp electrical service
- TDS high-speed internet and gas services available
- 11' 6" ceiling height above finished floor (AFF)
- NNN's estimated at \$9.86/SF/Yr.
- Marketing fund at \$1.00/SF/Yr.



Brokers are licensed in the state of Oregon. This information has been furnished from sources we deem reliable, but for which we assume no liability. This is an exclusive listing. The information contained herein is given in confidence with the understanding that all negotiations pertaining to this property be handled through Compass Commercial Real Estate Services. All measurements are approximate.

For More Information, Please Contact:



541.383.2444

Russell Huntamer, CCIM

rh@compasscommercial.com

Eli Harrison, Broker

eharrison@compasscommercial.com



503.241.1222

Steven Neville, Broker

steve@nevillebutler.com

Natalie Butler, Broker

natalie@nevillebutler.com