



1500, 1512, 1524A, & 1534  
Chestnut Road  
Elgin, SC 29045  
Kershaw County

22,400 square foot building  
Approximately 25.60 total acres

Tax Map # : 321-00-00-080  
321-00-00-081  
321-00-00-082  
321-00-00-079

Water: Public

Sewer: Septic - Sewer Available on  
Hwy 1

This property contains 4 individual homes with 39 beds; a multi-purpose school building; an administration building, a large home with a commercial kitchen and dining hall; a wood shop and two storage facilities. The property was used as a residential school for children with special needs. The property consists of 4 parcels that make up approximately 25+ acres. The grounds are open, flat and mostly cleared allowing for recreational use. Just a short drive to Elgin services or about 8 miles to the Village at Sandhills.



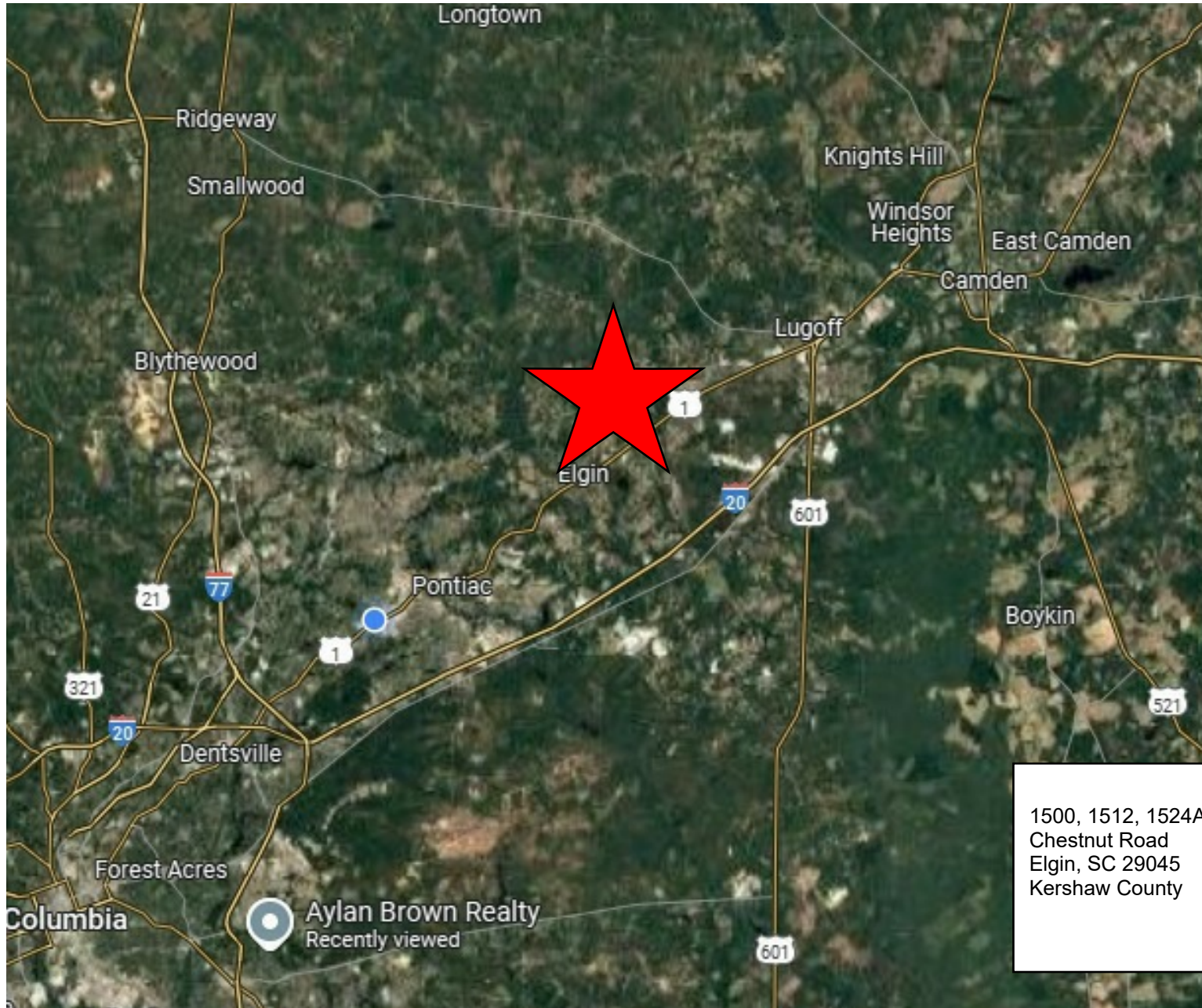
**SOUTH EAST**  
LAND & REAL ESTATE

Commercial Real Estate  
Land Acquisition  
Residential Development

275 Cut Off Rd  
Orangeburg, SC 29115

Contact: Darren Rhodes  
Broker

Phone: 803-447-4703



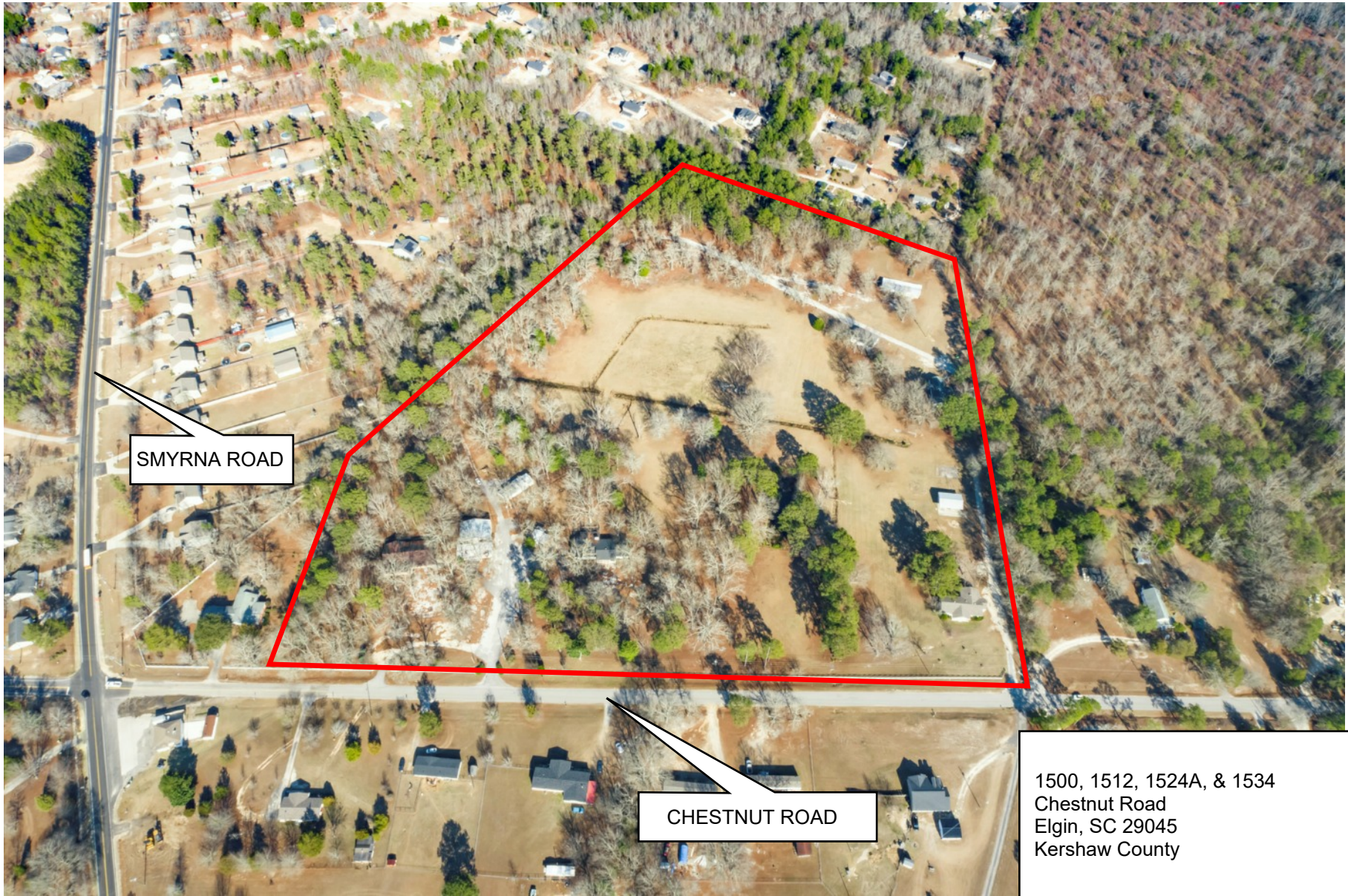
1500, 1512, 1524A, & 1534  
Chestnut Road  
Elgin, SC 29045  
Kershaw County



1500, 1512, 1524A, & 1534  
Chestnut Road  
Elgin, SC 29045  
Kershaw County







SMYRNA ROAD

CHESTNUT ROAD

1500, 1512, 1524A, & 1534  
Chestnut Road  
Elgin, SC 29045  
Kershaw County

1500, 1512, 1524A, & 1534  
Chestnut Road  
Elgin, SC 29045  
Kershaw County



SMYRNA ROAD

CHESTNUT ROAD

1500, 1512, 1524A, & 1534  
Chestnut Road  
Elgin, SC 29045  
Kershaw County



SMYRNA ROAD

CHESTNUT ROAD

1500, 1512, 1524A, & 1534  
Chestnut Road  
Elgin, SC 29045  
Kershaw County



CHESTNUT ROAD

SMYRNA ROAD

1500, 1512, 1524A, & 1534  
Chestnut Road  
Elgin, SC 29045  
Kershaw County



CHESTNUT ROAD

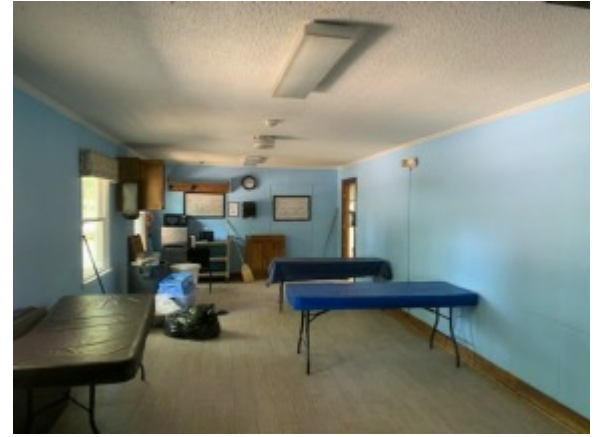
SMYRNA ROAD

1500, 1512, 1524A, & 1534  
Chestnut Road  
Elgin, SC 29045  
Kershaw County

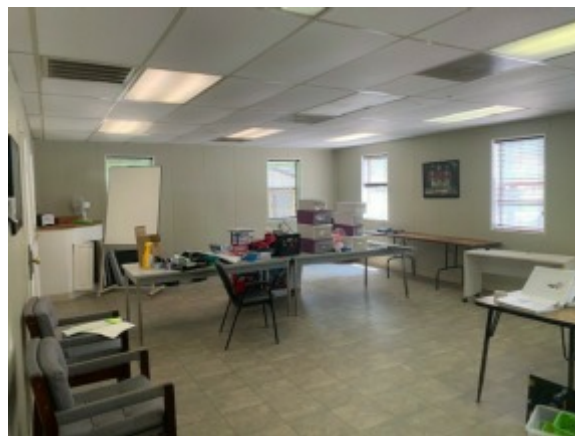
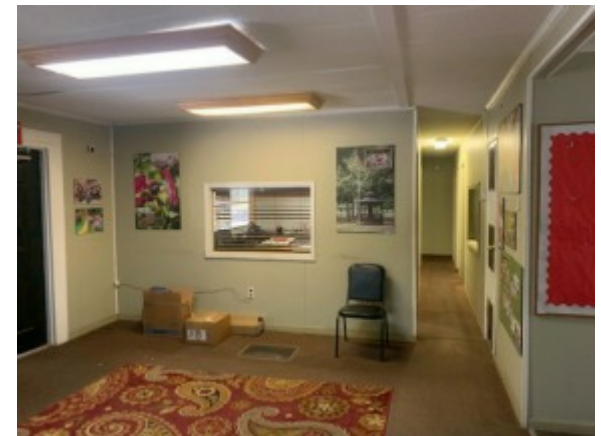
SCHOOL BUILDING



DINING / RESIDENTIAL



ADMINISTRATION BUILDING



WOOD SHOP / FRONT AND BACK UTILITY BUILDINGS



GROUNDS



3 HOMES ON SITE



1



2



3