



COMMERCIAL REALTY SOLUTIONS

For Lease  
Medical  
Office



## WILLMAR

Great Location - Medical Office

**Lease Rate: \$16.00 Net**

Building Size: 11,800/sf (Available: 4,000/sf)

1320 1st Strt South, Willmar, MN 56201

Jason Duininck, Broker  
320.212.9330  
JDuininck@Crs-Mn.com

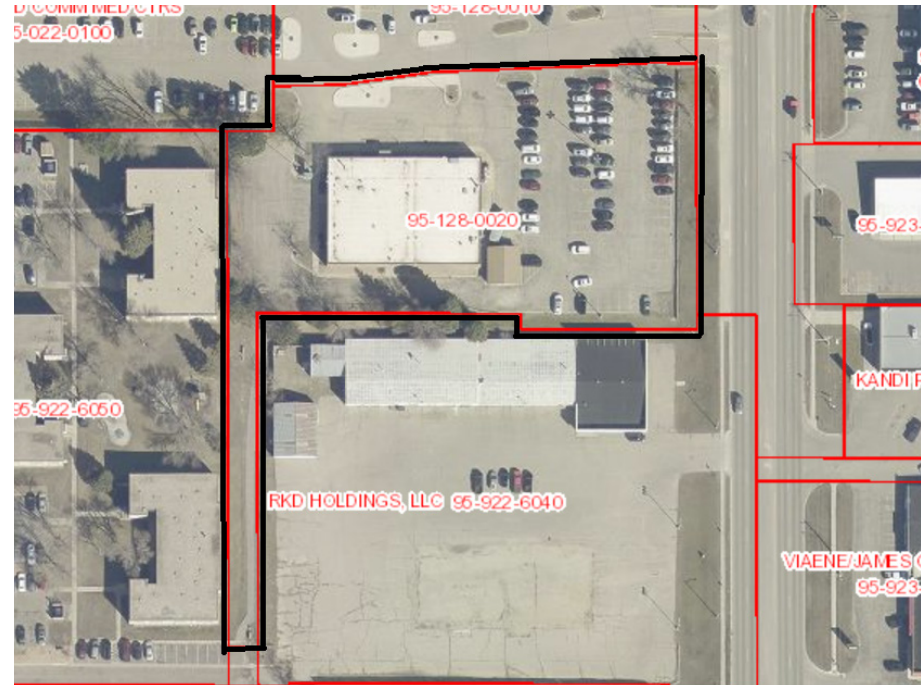


## PROPERTY LOCATION

- \* Close to Intersection of Willmar Ave & 1st St S
- \* West Side of 1st Street
- \* Businesses in the Area:  
 Cash Wise Foods, Walt's, Panda Garden, Walgreens, TJ Maxx,  
 Carris Health Clinic & Out Patient Surgery Center,  
 Herbert and Gerberts, Taco Johns, H&R Block, Kohls,  
 New to You, LULU Beans, Tires Plus, Lake Region Bank,  
 Bremer Bank and more...

## TRAFFIC COUNTS - 2025

- \* 1st Street South - 12,936 VPD
- \* Willmar Ave - 9,151 VPD



The information contained herein was obtained from sources believed to be reliable, but Commercial Realty Solutions has not verified nor has any knowledge regarding the accuracy of information and makes no representation or warranty concerning the same. Therefore, Commercial Realty Solutions disclaims all liabilities in connection with any inaccuracies or incompleteness. This marketing material is for the implicit use by Commercial Realty Solutions for the marketing of their listings and is not for use by other brokerage(s).

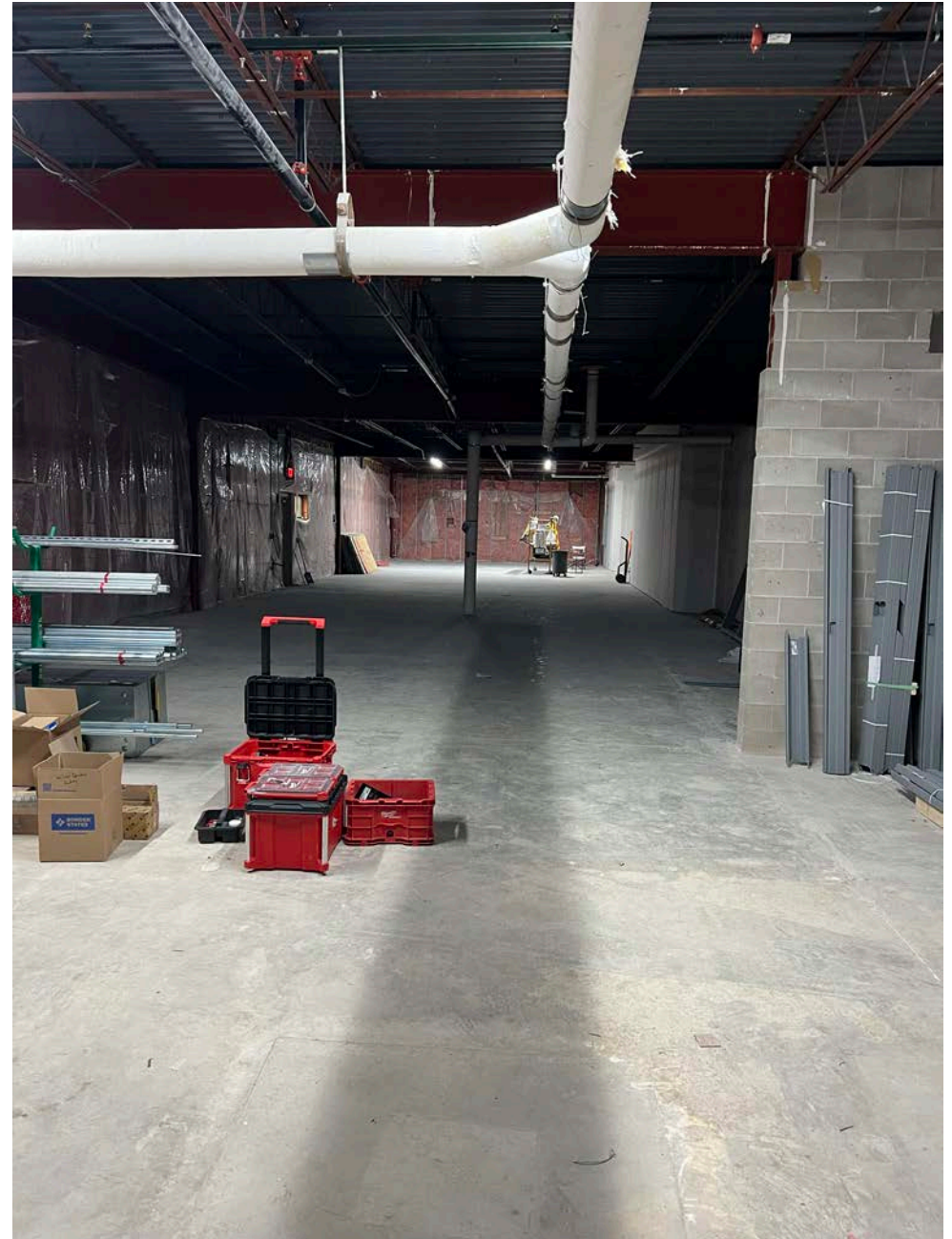
# PROPERTY OVERVIEW

1320 1st St S, Willmar, MN

Lease Rate

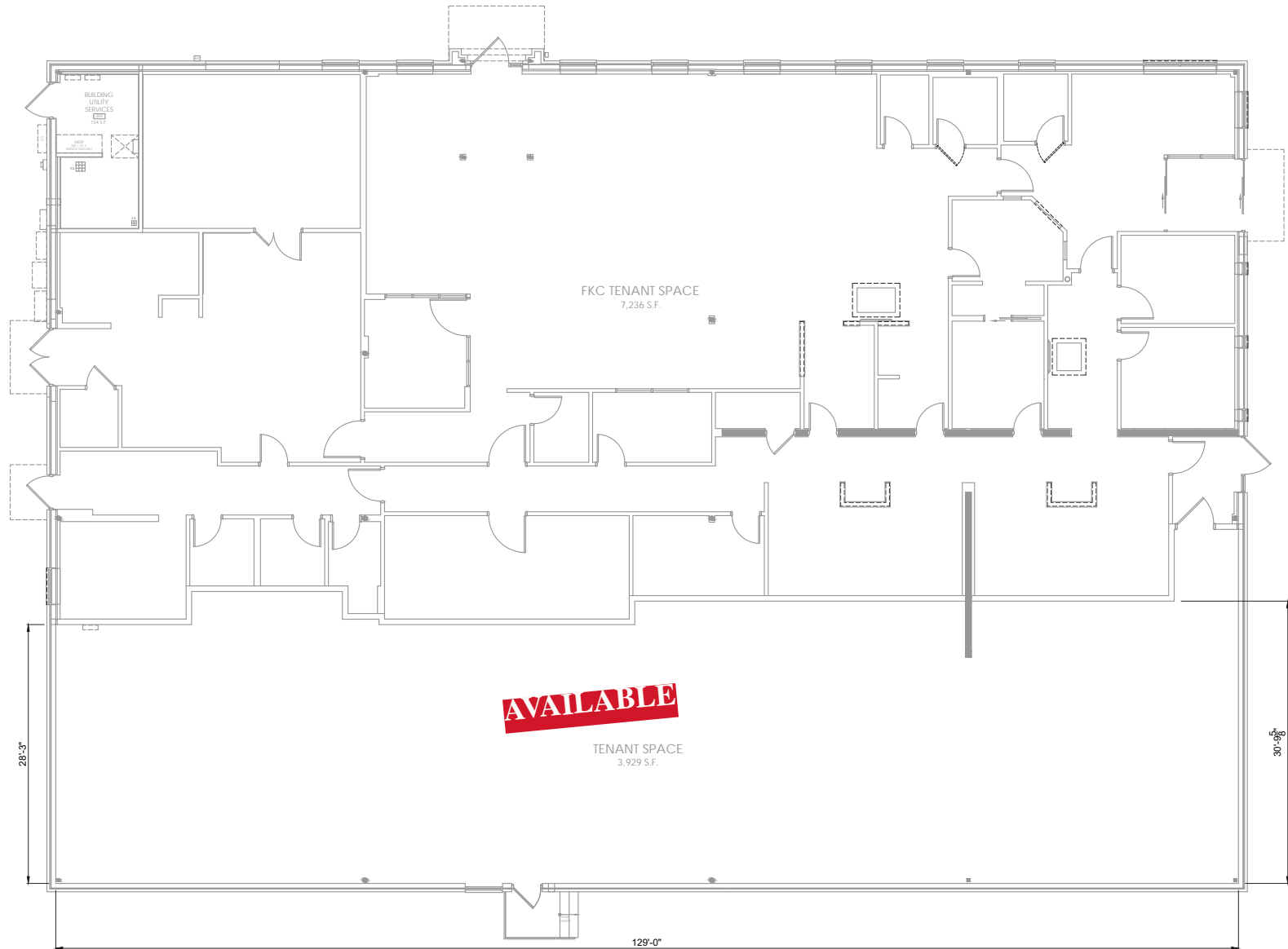
\$16.00 Net

Operating Expenses	TBD
Building Size	11,800/sf
Space Available	4,000/sf
Lot Size	1.19 Acres
Kandiyohi County	PID 95-128-0020
2026 Taxes	\$29,825.00 + Assessments \$201.00
Zoned	G2 General Business
Built	1986
Parking	30+



This information has been secured from sources we believe to be reliable, but we make no representations or warranties explained or implied as to the accuracy of the information. Buyer must verify the information and bears all risk for any inaccuracies.

# FLOOR PLAN



This information has been secured from sources we believe to be reliable, but we make no representations or warranties explained or implied as to the accuracy of the information. Buyer must verify the information and bears all risk for any inaccuracies.

# EXTERIOR



## PROPERTY INFORMATION

- \* Front Entrance & Side Entrance
- \* Space Ready for Build to Suite  
(Building Owner willing to add windows along front and side of building to suit Tenant needs.)
- \* Great Location for Medical Office
- \* Single or Multi Tenant Building
- \* HVAC - 5 Ton Trane Unit
- \* Electrical - 3 Phase, 200 Amp
- \* Interior Wet Sprinkler

This information has been secured from sources we believe to be reliable, but we make no representations or warranties explained or implied as to the accuracy of the information. Buyer must verify the information and bears all risk for any inaccuracies.