



**BIG LOTS STORES, LLC.**  
**STORE PLANNING DEPT.**  
**4900 E DUBLIN GRANVILLE RD**  
**COLUMBUS, OHIO 43081**  
**PHONE: (614) 278-6800**

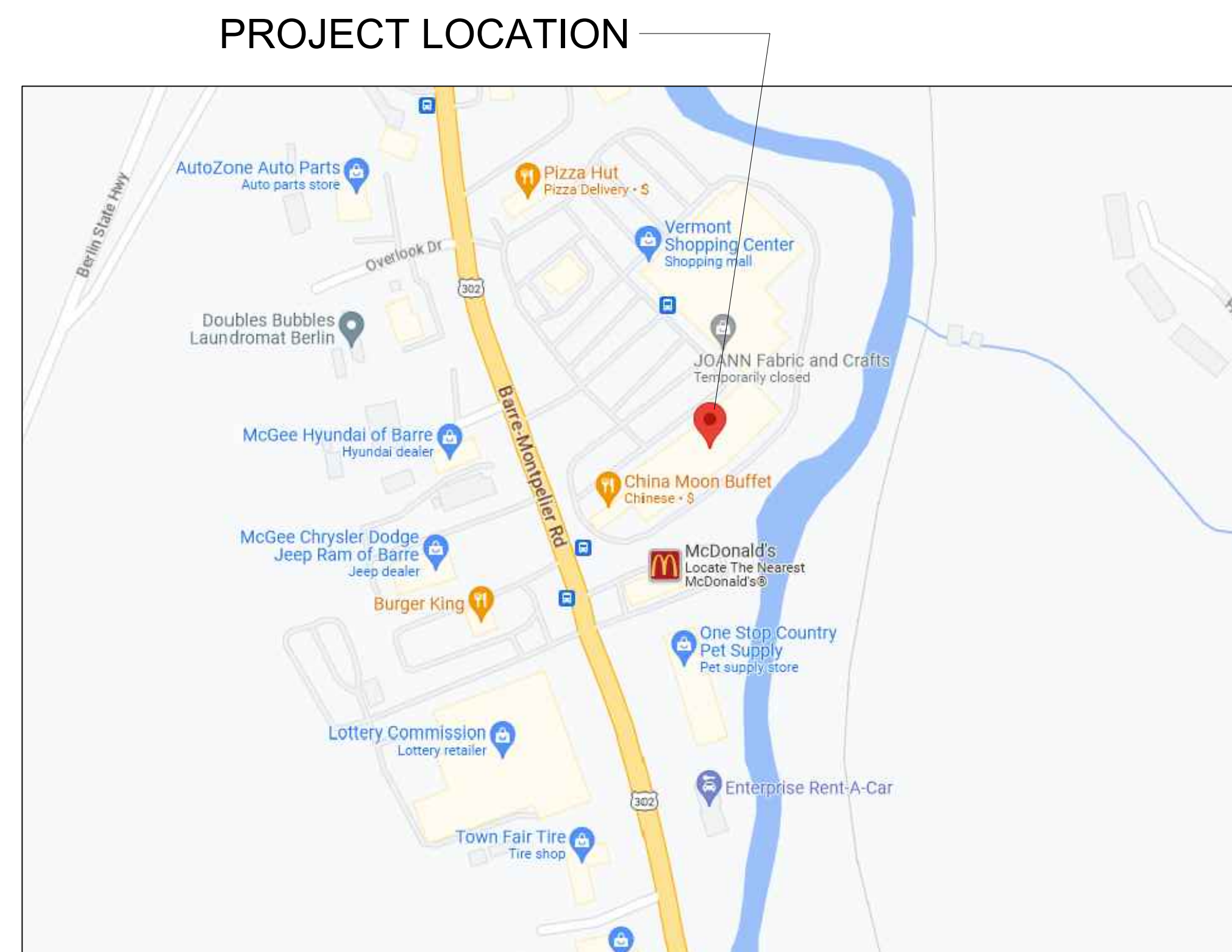
STORE ADDRESS:

**BIG LOTS STORE #4520**  
**CENTRAL VERMONT SHOPPING CENTER**  
**1400 ROUTE 302**  
**BERLIN, VT 05602**

MATERIALS AND EQUIPMENT SCHEDULE				
PRODUCT	SUPPLIED BY	INSTALLED BY	MANUFACTURER & MODEL NUMBER	VENDOR AND CONTACT INFORMATION
BIG LOTS TRADE FIXTURES	BIG LOTS	BIG LOTS	MADIX / LOZIER	MICHELLE WALLACE 647-293-8696 MWALLACE@MADIXINC.COM
INTERIOR / EXTERIOR PAINT	BIG LOTS GC	BIG LOTS GC	BEHR PAINTS	BEHR PAINTS; NATIONAL ACCOUNTS - GEOFF ROSS-817-300-4483 GROSS@BEHR.COM
WALK OFF CARPET TILE	BIG LOTS	BIG LOTS GC	PATH CARPET TILE / 57034 - LAVA 34549 24"X24"	SHAW CONTACT: JESSICA BEAVERS - PHONE: (706) 532-7483 - EMAIL: JESSICA.BEAVERS@SHAWINC.COM
GREY VCT	LANDLORD	LANDLORD GC	AHF PRODUCTS - VCT STANDARD EXCELON IMPERIAL TEXTURE 12"X12" - 1/8" THICK - 51904 STERLING	AHF PRODUCTS - ORDERSUPPORT@AHFPRODUCTS.COM - 888-243-4492
COVE BASE	BIG LOTS GC	BIG LOTS GC	ARMSTRONG VINYL WALL BASE - BLACK #60 .080 4"	SOURCE LOCALLY
STOCKROOM DOORS	BIG LOTS	BIG LOTS GC	ELIASON MODEL P-11 PLUS - COLOR: BLACK 108	LANA AVERILL DIRECT LINE: 513-714-3547 QUOTES-ORDERS@SENECA.COM

PROJECT NOTES:

**SITE PLAN**



**DRAWING INDEX**

SHEET	SHEET TITLE	REVISIONS				
		1	2	3	4	5
<b>ARCHITECTURAL</b>						
T-1	TITLE PAGE					
D-1	DEMO PLAN					
A-1	CONSTRUCTION PLAN					
A-1.1	CONSTRUCTION NOTES					
A-1.2	FLOOR FINISH PLAN					
A-2	FIXTURE PLAN					
A-2.1	CHECKOUT DETAILS					
A-3	REFLECTED CEILING PLAN					
<b>ELECTRICAL</b>						
E-1	ELECTRIC PLAN					
E-2	ELECTRIC NOTES					

REVISION  
DATE

**BIG LOTS STORE #4520**  
**CENTRAL VERMONT SHOPPING CENTER**  
**1400 ROUTE 302**  
**BERLIN, VT 05602**

SQUARE FOOTAGE	
Area	SqFt
SALES FLOOR	31,887
TOTAL BUILDING	53,681

DATE DRAWN:  
08/29/2023  
DRAWN BY:  
LR  
SCALE:  
1/8" = 1'-0"

**BIG LOTS STORES, LLC.**  
**STORE PLANNING DEPT.**  
**4900 E DUBLIN GRANVILLE RD**  
**COLUMBUS, OHIO 43081**  
**PHONE: (614) 278-6800**

**CODE INFORMATION**

PROJECT NARRATIVE:  
 PROJECT SCOPE TO CONSIST OF INTERIOR TENANT IMPROVEMENTS TO THE EXISTING LEASED SPACE. NO INCREASES IN AREA ARE PLANNED. NO STRUCTURAL MODIFICATIONS TO THE BUILDING ARE PART OF THE PROJECT SCOPE.

1. APPLICABLE CODES:

BUILDING: --  
 MECHANICAL: --  
 PLUMBING: --  
 ELECTRICAL: --  
 FIRE: --  
 ACCESSIBILITY: --

2. BUILDING DESCRIPTION:

BUILDING TYPE: --  
 CONSTRUCTION TYPE: --  
 USE GROUP: --  
 EXITS PROVIDED: --  
 EXISTING HEIGHT: --  
 FIRE SPRINKLERS PROVIDED: --  
 ALLOWABLE AREA: --  
 SPRINKLER INCREASE: --  
 -- x-% PER -- = -- SF

3. BUILDING AREA:

SALES (FURNITURE SALES --)  
 OFFICES/LOUNGE --  
 STORAGE/SHIPPING/JAN/ELEC --  
 RESTROOMS --  
 GROSS TOTAL AREA --

4. OCCUPANT LOAD:

MERCHANTILE -- SF / -- SF PER PERSON: --  
 BUSINESS: -- SF / -- SF PER PERSON: --  
 STORAGE AREAS: -- SF / -- SF PER PERSON: --  
 TOTAL CALCULATED OCCUPANCY --  
 REQUIRED EGRESS WIDTH -- x -- INCHES/OCC. = --  
 PROVIDED EGRESS WIDTH --  
 DOOR # = --  
 DOOR # = --  
 DOOR # = --  
 TOTAL CALCULATED WIDTH --

5. PLUMBING FIXTURES:

OCCUPANT LOAD FOR PLUMBING = --  
 PLUMBING FIXTURES REQUIRED:  
 TOILETS: --  
 LAVATORIES: --  
 DRINKING FOUNTAIN: --  
 PLUMBING FIXTURES PROVIDED:  
 MEN'S RESTROOM: --  
 TOILETS: --  
 LAVATORIES: --  
 URINALS: --  
 WOMEN'S RESTROOM: --  
 TOILETS: --  
 LAVATORIES: --  
 DRINKING FOUNTAIN: --  
 SERVICE SINK: --

**DEVELOPMENT CONTACTS**

CITY BUILDING DEPT:

FIRE:

**ISSUE DATES**

PERMIT --  
 BID --  
 CONSTRUCTION --

**NOTES**

**FIELD VERIFY ALL CONDITIONS**

DESIGN DRAWINGS ARE SCHEMATIC. THIS CONTRACTOR SHALL VISIT THE SITE PRIOR TO BIDDING OR AWARD OF CONTRACT TO INSPECT EXISTING FIELD CONDITIONS. THIS CONTRACT SHALL INCLUDE ALL LABOR AND MATERIALS NECESSARY FOR FIELD MODIFICATIONS DUE TO EXISTING CONDITIONS.

THE CONTRACTOR SHALL CONTACT THE ARCHITECT, ENGINEER OR OWNER PRIOR TO BIDDING FOR INTERPRETATIONS AND CLARIFICATIONS OF THE DESIGN AND INCLUDE IN HIS BID ALL COSTS TO MEET THE DESIGN INTENT. CLARIFICATIONS MADE BY THE ARCHITECT, ENGINEER OR OWNER AFTER BIDDING WILL BE FINAL AND SHALL BE IMPLEMENTED AT CONTRACTORS COST.

BIDDING CONTRACTORS SHALL HAVE A WORKING KNOWLEDGE OF LOCAL CODES AND ORDINANCES AND SHALL INCLUDE IN THEIR BIDS THE COSTS FOR ALL WORK INSTALLED IN STRICT ACCORDANCE WITH GOVERNING CODES. THE PLANS AND SPECIFICATIONS NOT WITHSTANDING, THE CONTRACTOR SHALL ALERT ARCHITECT, ENGINEER OR OWNER OF ANY APPARENT DISCREPANCIES BETWEEN GOVERNING CODES AND DESIGN INTENT.

**TITLE PAGE**

SHEET:

**T-1**



**DOOR SCHEDULE**

SYMBOL	SIZE	DESCRIPTION	FRAME TYPE	HARDWARE	DOOR FINISH	REMARKS
⊙	PR. 3'-0" x 7'-0"	NEW DOUBLE-ACTING STOCKROOM DOORS	CHSD	6		

**HARDWARE NOTES**

**GROUP 6 (STOCKROOM DOORS)**

- STOCKROOM DOORS TO BE:
- ELUSON MODEL P-11 PLUS
  - COLOR: BLACK 158
  - 1" SPRING BUMPER - BLACK
  - 7" X 12" JAMB GUARDS
  - 1/4" X 1/8" RUBBER IMPACT WINDOWS
  - WITH BLACK FRAME

**ADDITIONAL HARDWARE NOTES:**

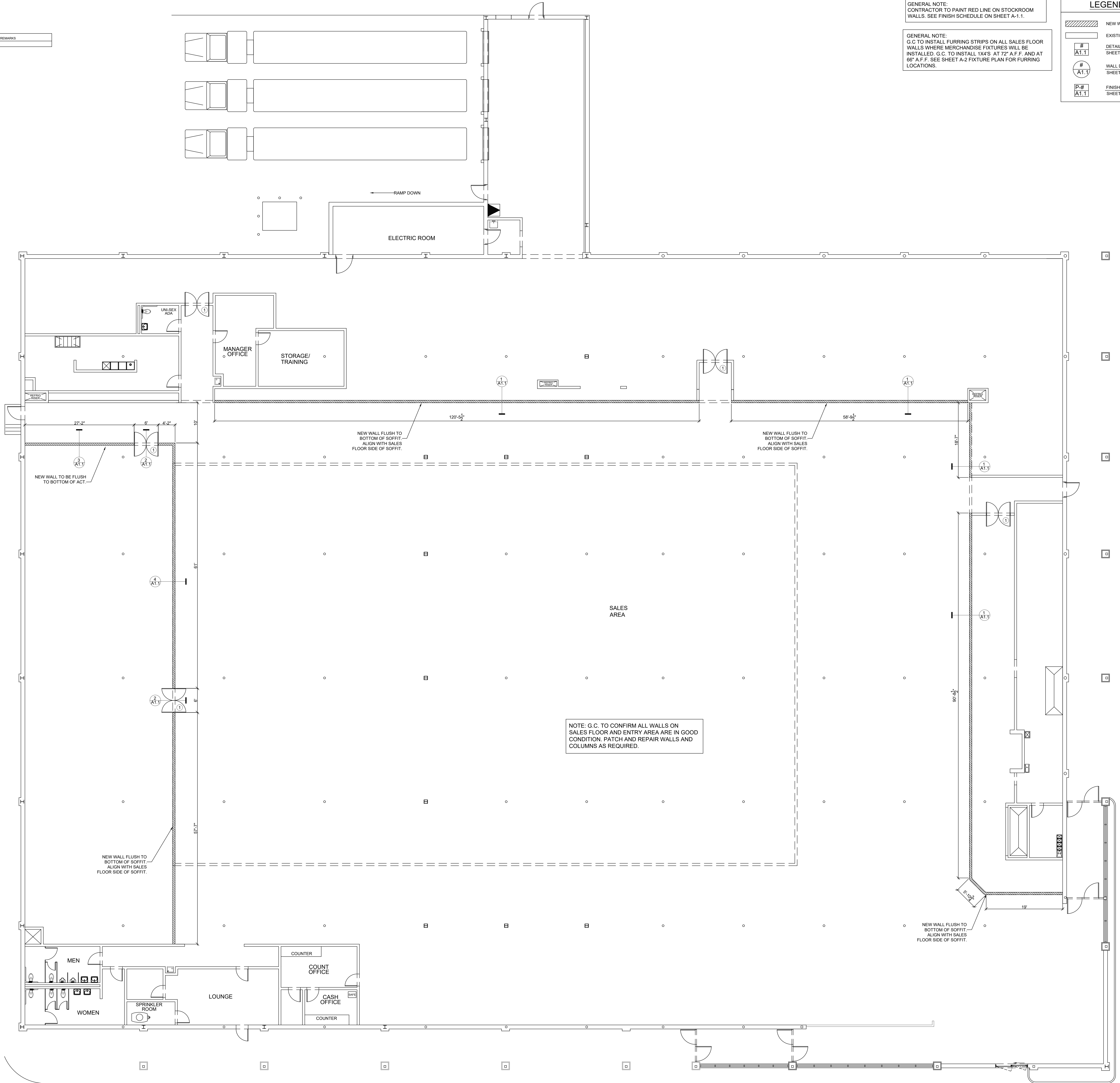
- GENERAL CONTRACTOR TO ENSURE ALL EXISTING DOORS AND DOOR SYSTEMS ARE IN GOOD WORKING CONDITION. GENERAL CONTRACTOR TO ENSURE ALL EXISTING EXTERIOR DOORS, THRESHOLD, WEATHER-STRIPPING, DRIP CAP AND DOOR SYSTEMS ARE IN GOOD WORKING CONDITION. NOTIFY BIG LOTS REPRESENTATIVE OF ANY ISSUES.

GENERAL NOTE:  
CONTRACTOR TO PAINT RED LINE ON STOCKROOM WALLS. SEE FINISH SCHEDULE ON SHEET A-1.1.

GENERAL NOTE:  
G.C. TO INSTALL FURRING STRIPS ON ALL SALES FLOOR WALLS WHERE MERCHANDISE FIXTURES WILL BE INSTALLED. G.C. TO INSTALL 1x4'S AT 72" A.F.F. AND AT 66" A.F.F. SEE SHEET A-2 FIXTURE PLAN FOR FURRING LOCATIONS.

**LEGEND**

	NEW WALL
	EXISTING WALL
#	DETAIL NOTE SHEET NUMBER
# AT.1	WALL DETAIL NOTE SHEET NUMBER
P.#	FINISH SCHEDULE SHEET NUMBER
AT.1	



NOTE: G.C. TO CONFIRM ALL WALLS ON SALES FLOOR AND ENTRY AREA ARE IN GOOD CONDITION. PATCH AND REPAIR WALLS AND COLUMNS AS REQUIRED.

REVISION

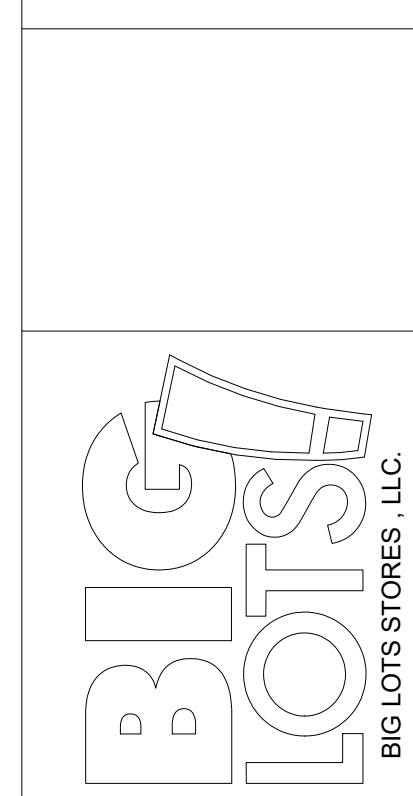
DATE

**BIG LOTS STORE #4520**  
**CENTRAL VERMONT SHOPPING CENTER**  
 1400 ROUTE 302  
 BERLIN, VT 05602

DATE DRAWN:	SQUARE FOOTAGE	
	Area	SqFt
08/29/2023	SALES FLOOR	31,897
LR	TOTAL BUILDING	53,681

DRAWN BY:  
LR

**BIG LOTS STORES, LLC.**  
 STORE PLANNING DEPT.  
 4900 E. DUBLIN GRANVILLE RD  
 COLUMBUS, OHIO 43081  
 PHONE: (614) 278-6800



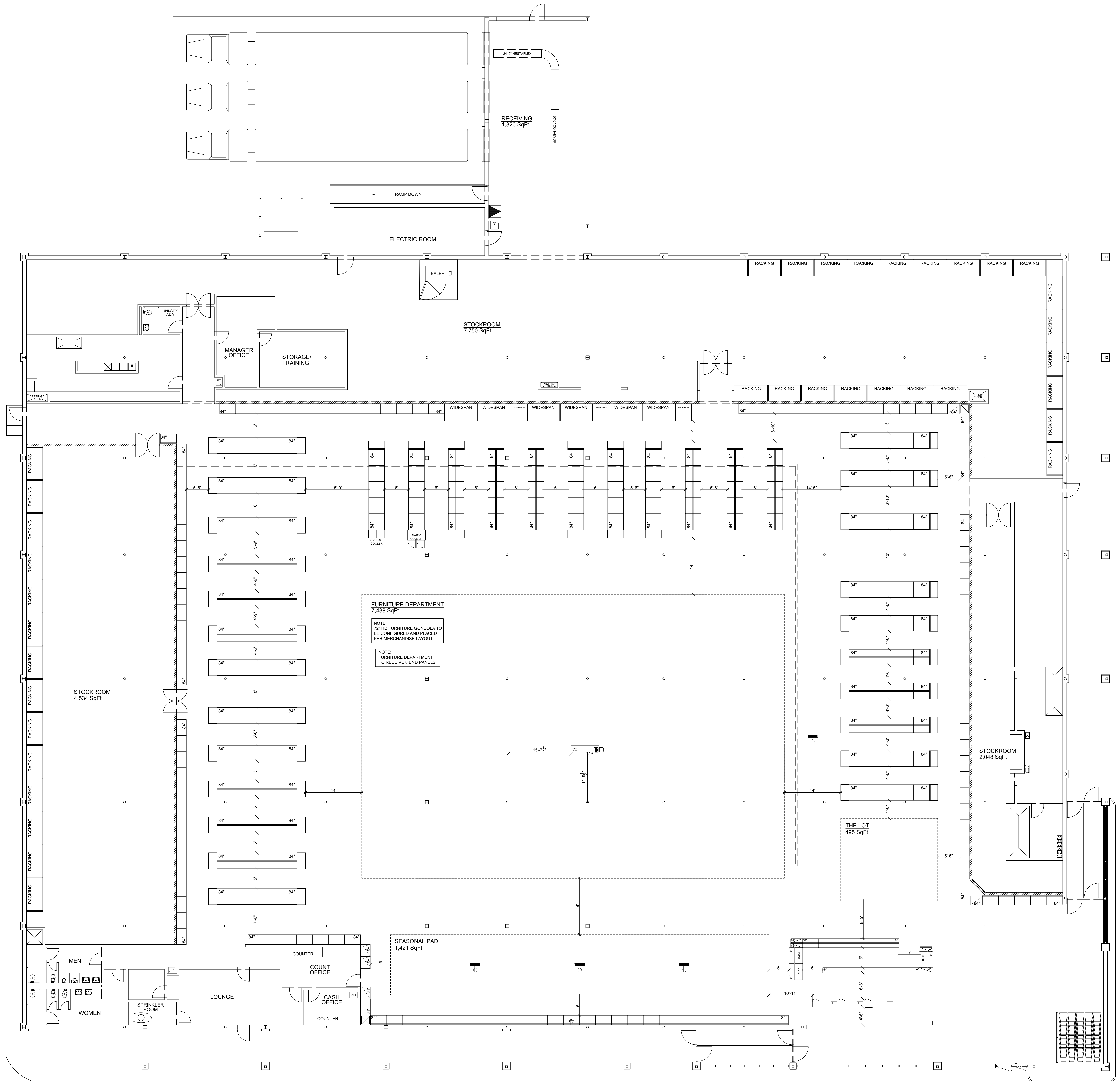
SHEET:





**FIXTURE NOTES:**

- TRADE FIXTURES TO BE DELIVERED AND INSTALLED BY BIG LOTS
- CHECKOUT QUELINE TO CONSIST OF 54" GONDOLA RUNS THAT HAVE 12" BASE DECKS. RUNS WILL INCLUDE 4' SECTIONS AND 3' SECTIONS. RUNS WILL EITHER BE DOUBLE SIDED OR SINGLE SIDED GONDOLAS. SEE FIXTURE PLAN FOR NUMBER OF SECTIONS.
- 72" FURNITURE DEPT. GONDOLA RUNS TO HAVE 25' (HD) DEEP BASE DECKS, (2) SHEETS OF FLATBOARD OF 48"X 67", ONE ON EACH SIDE PER 4' SECTION. EACH SEPARATE GONDOLA RUN TO HAVE SOLID END PANEL AT EACH END.  
\*HD (HEAVY DUTY) INDICATES THE UPRITES AND BASE BRACKETS ARE HD TYPE AND WILL BE MARKED ACCORDINGLY.
- 84" GONDOLA RUNS TO HAVE 22" DEEP BASE DECKS, (4) SHEETS OF PEGBOARD, (2) 48"X 42" & (2) 48" X 37", ONE SIZE OF EACH ON EITHER SIDE PER 4' SECTION.
- 84" END CAPS TO HAVE 48"X 22" BASE DECKS, 84" UPRITES, (4) SHEETS OF PEGBOARD, (2) 48"X 42" & (2) 48" X 37", ONE SIZE OF EACH ON EITHER SIDE PER 4' SECTION, (2) BASE END TRIMS & (2) UPRITE END TRIMS.
- 84" WALLCASE RUNS HAVE 22" DEEP BASE DECKS, (2) SHEETS OF PEGBOARD, (1) 48"X 42" & (1) 48"X 37" PER 4' SECTION.
- 84" WIDESPAN WALL SECTIONS TO HAVE (2) UPRIGHTS, (10) CROSS BARS, AND (5) SHELF.



DATE

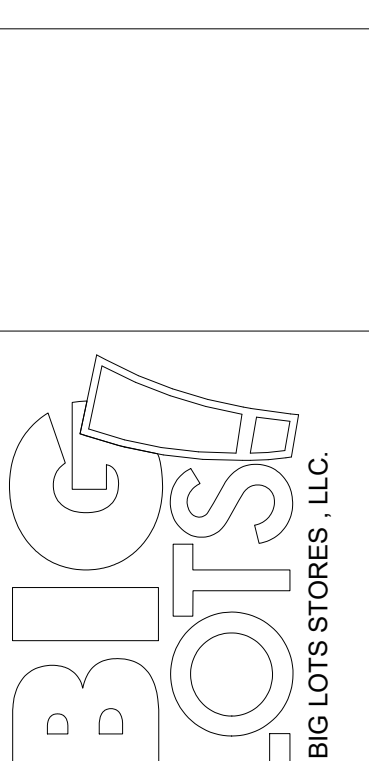
REVISION

**BIG LOTS STORE #4520**  
**CENTRAL VERMONT SHOPPING CENTER**  
 1400 ROUTE 302  
 BERLIN, VT 05602

SQUARE FOOTAGE	SqFt
SALES FLOOR	31,897
TOTAL BUILDING	53,681

DATE DRAWN: 08/29/2023  
 DRAWN BY: LR

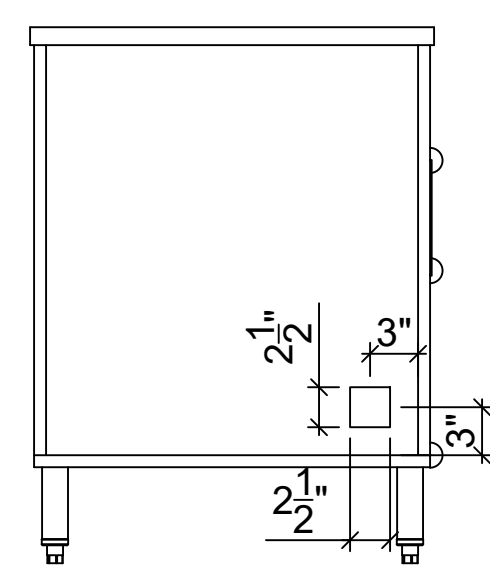
**BIG LOTS STORES, L.L.C.**  
 STORE PLANNING DEPT.  
 4900 E. DUBLIN GRANVILLE RD  
 COLUMBUS, OHIO 43081  
 PHONE: (614) 278-6800



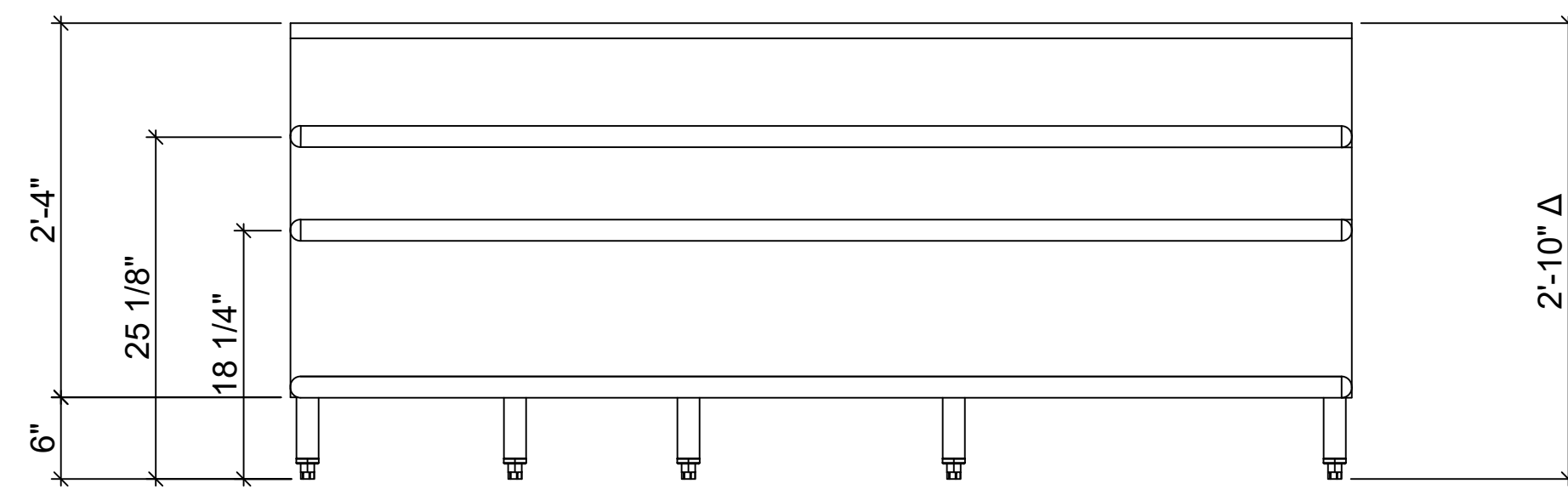
SHEET:

A-2

FIXTURE PLAN

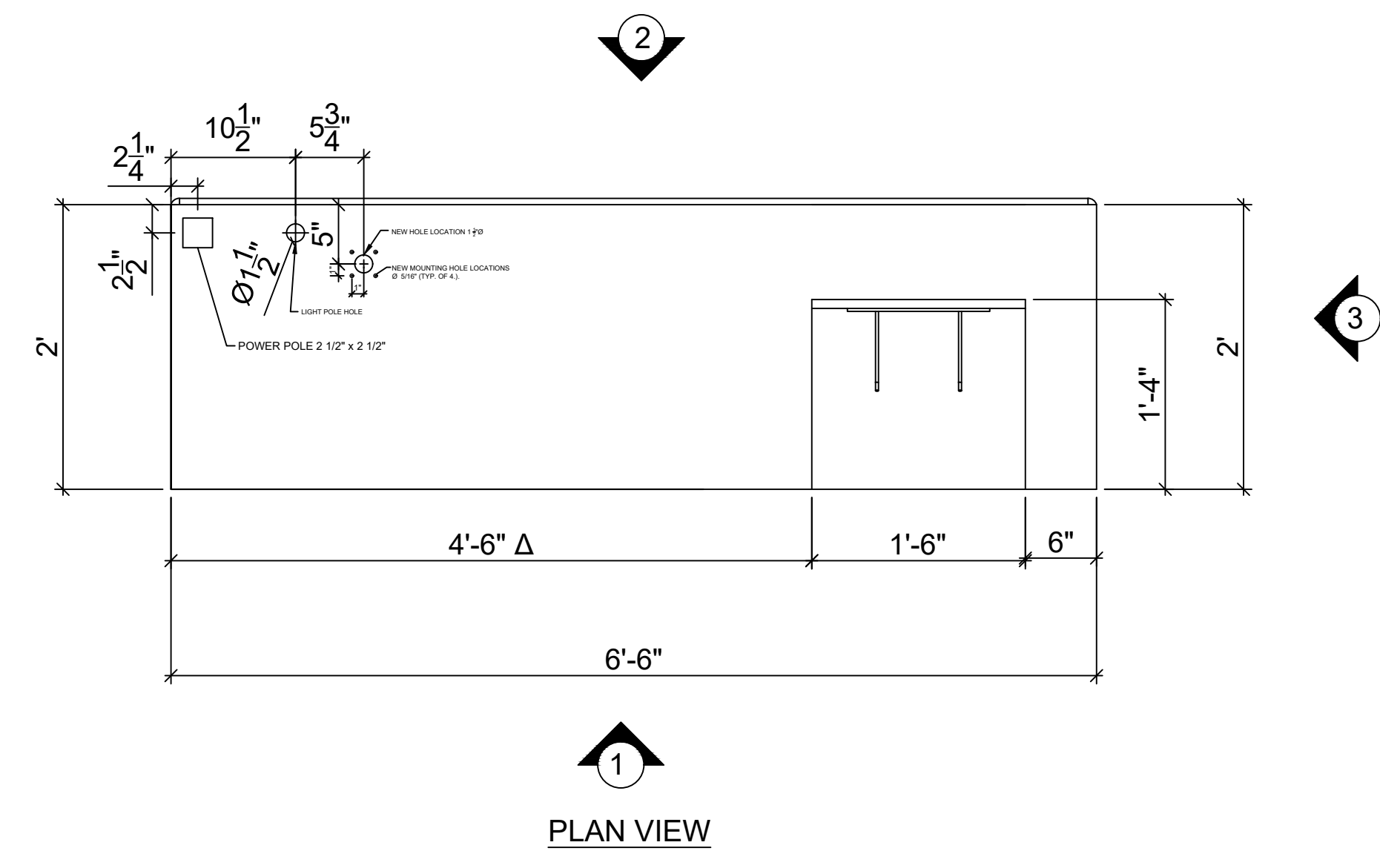


ELEVATION 3

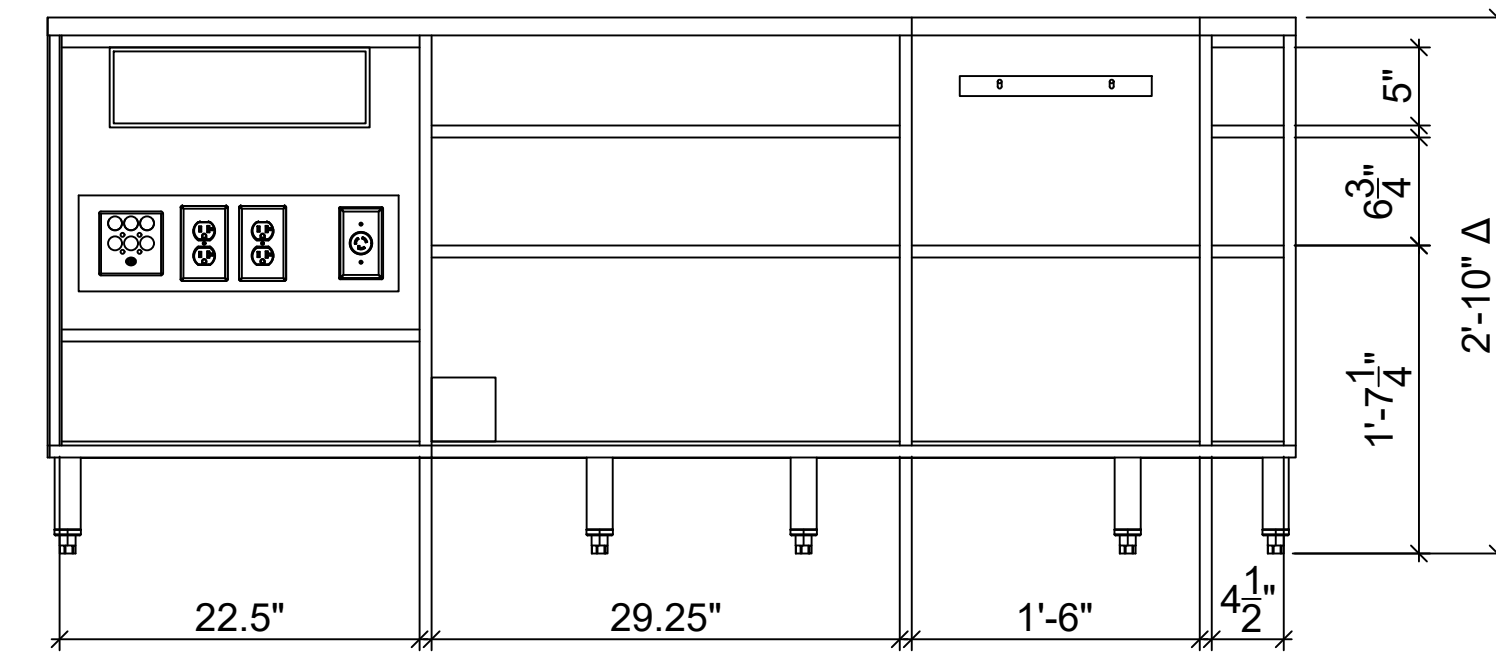


ELEVATION 2

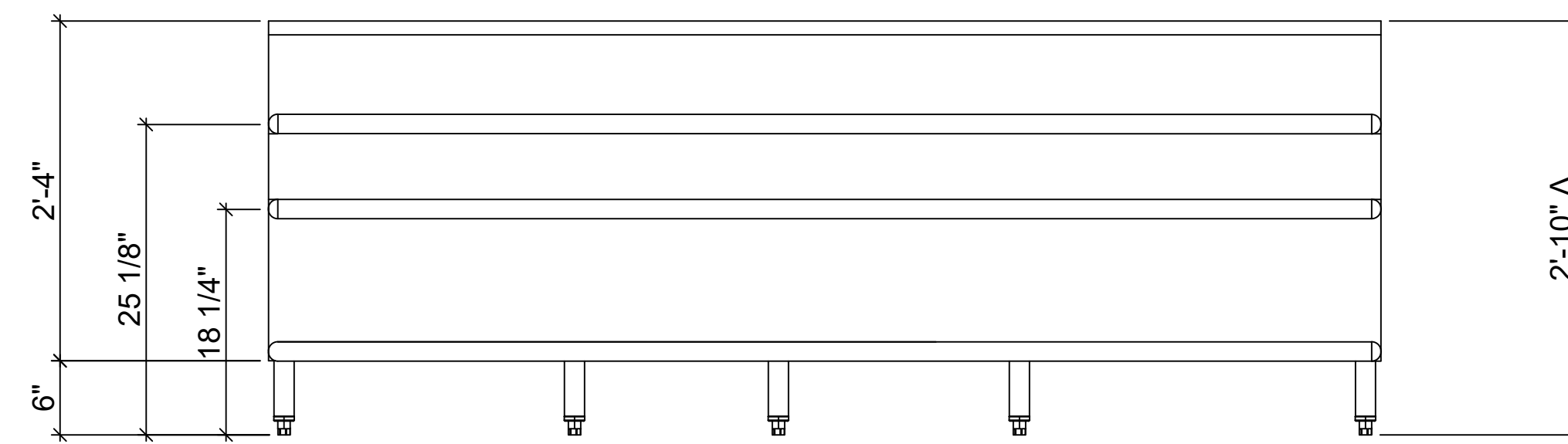
**STANDARD CHECKOUT**  
SCALE: 3/4"=1'-0"



PLAN VIEW

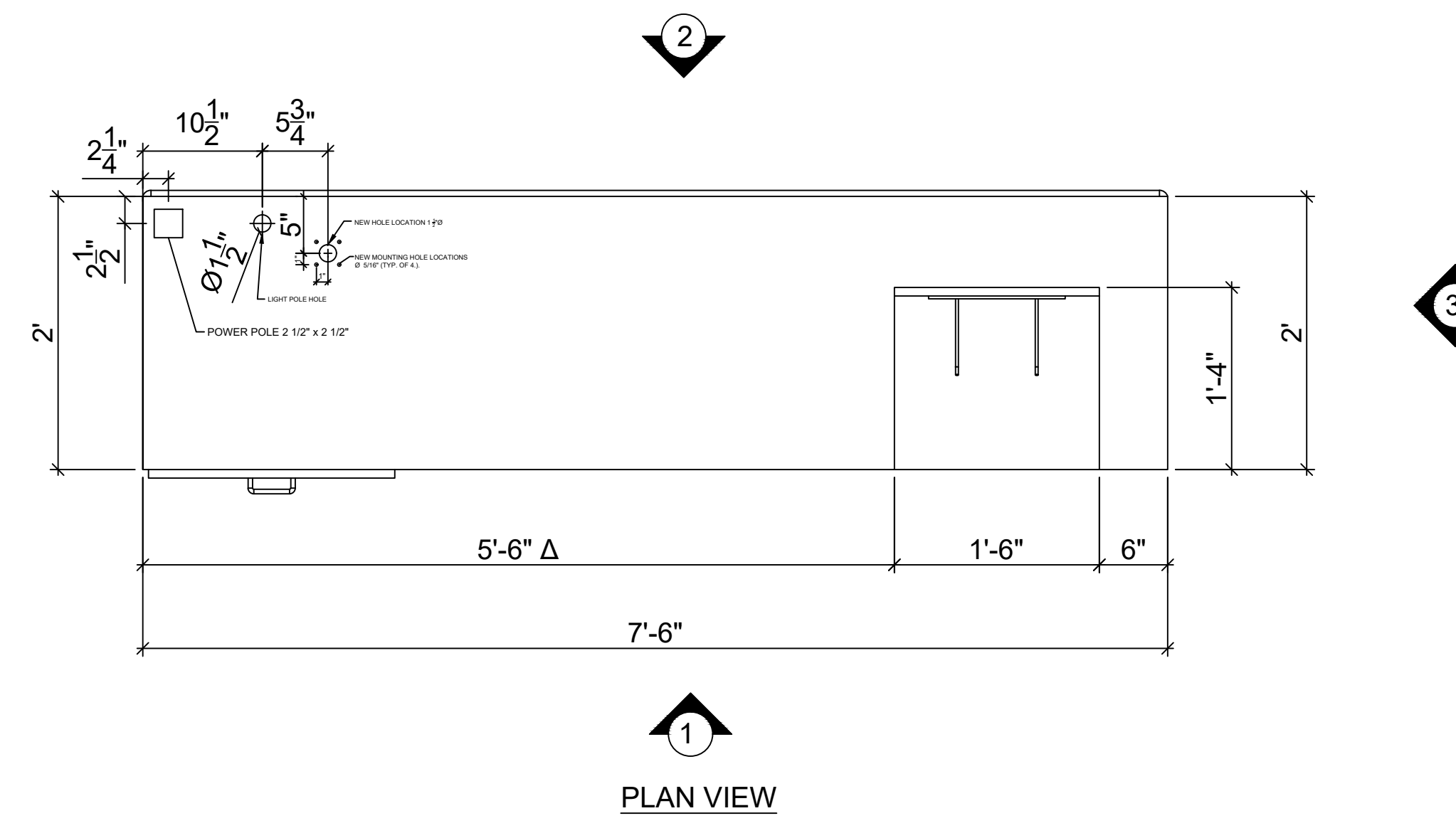


ELEVATION 1

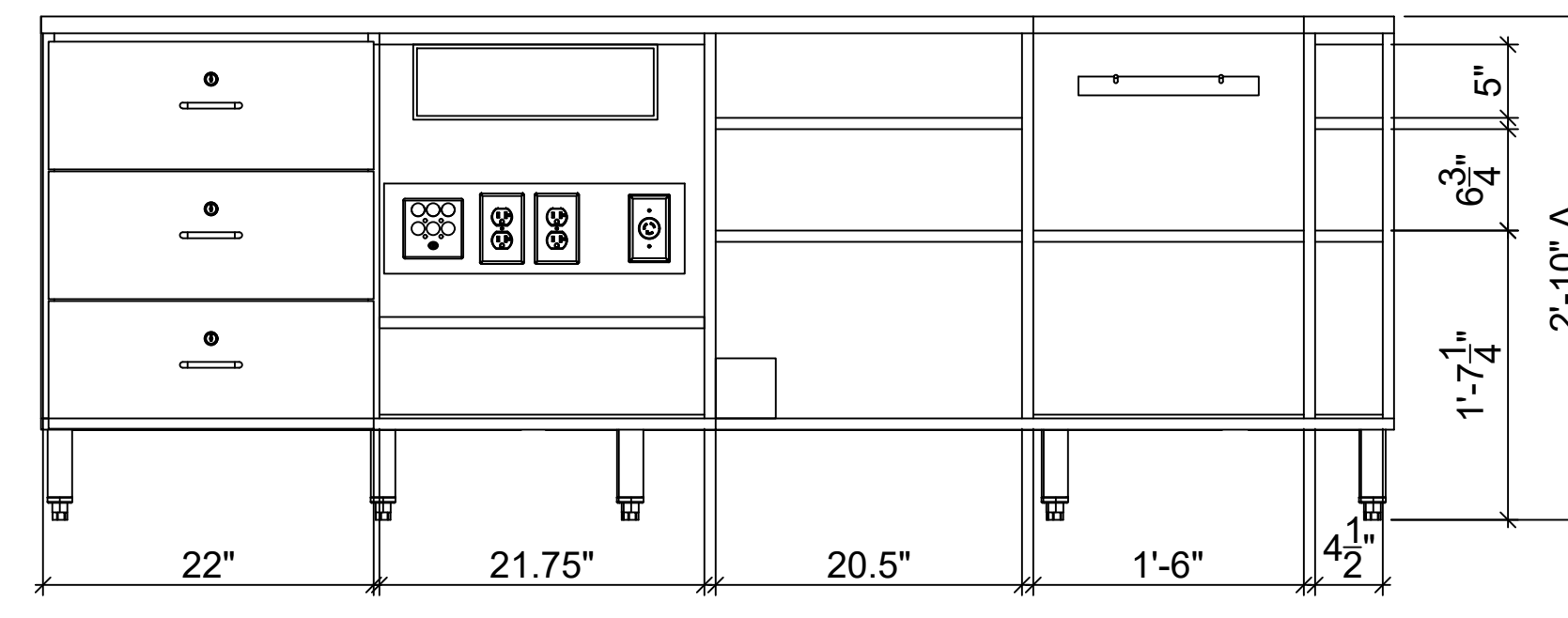


ELEVATION 2

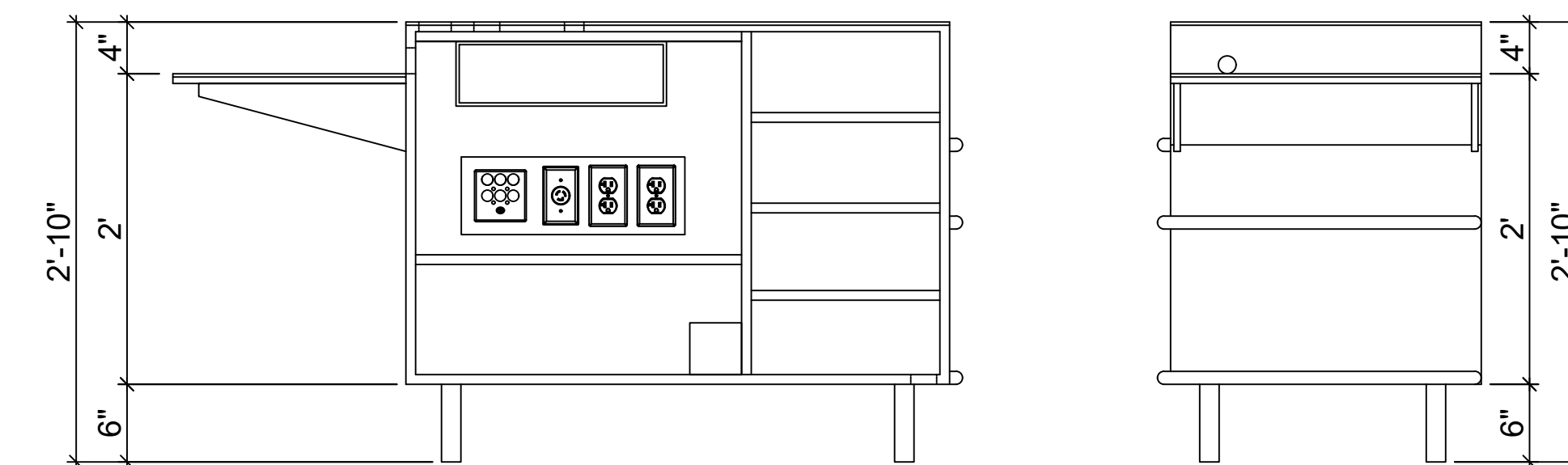
**SERVICE DESK**  
SCALE: 1/2"=1'-0"



PLAN VIEW



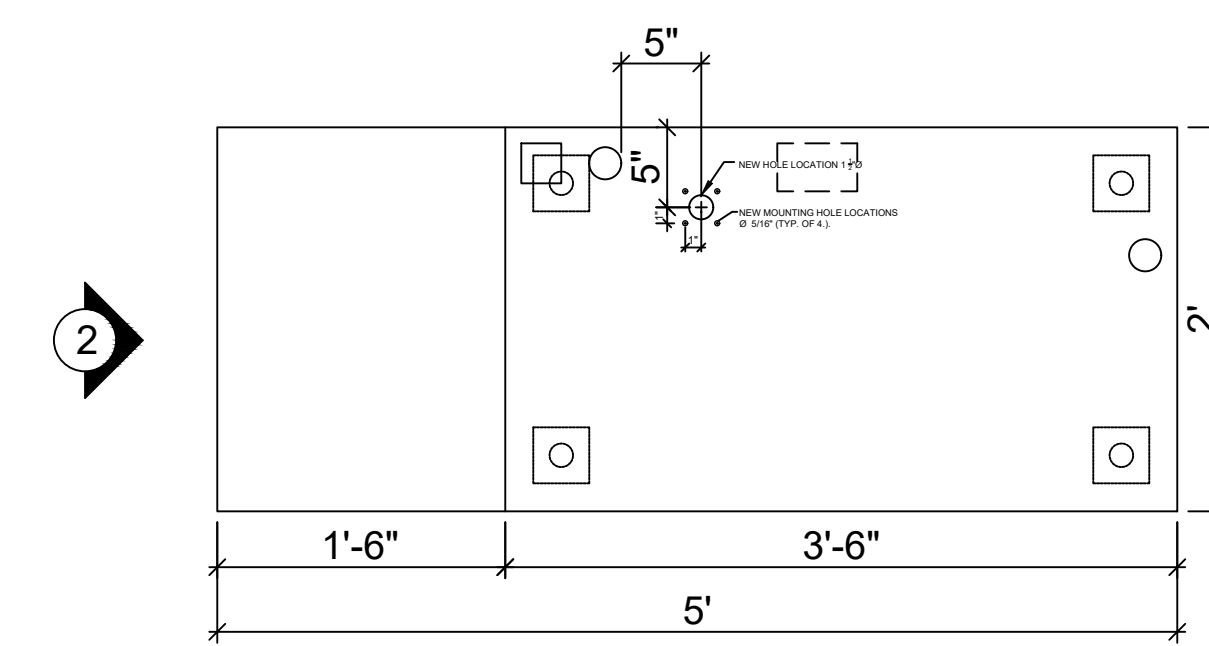
ELEVATION 1



ELEVATION 1

ELEVATION 2

**FURNITURE CHECKOUT**  
SCALE: 1/2"=1'-0"



PLAN VIEW

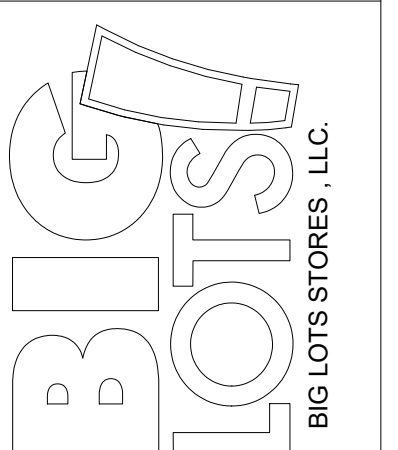
DATE

REVISION

BIG LOTS STORE #4520  
CENTRAL VERMONT SHOPPING CENTER  
1400 ROUTE 302  
BERLIN, VT 05602

DATE DRAWN:	SQUARE FOOTAGE
08/29/2023	Area
DRAWN BY:	SqFt
LR	SALES FLOOR 31,897
SCALE:	TOTAL BUILDING 53,681
1/8" = 1'-0"	

BIG LOTS STORES, LLC.  
STORE PLANNING DEPT.  
4900 E. DUBLIN GRANVILLE RD  
COLUMBUS, OHIO 43081  
PHONE: (614) 278-6800

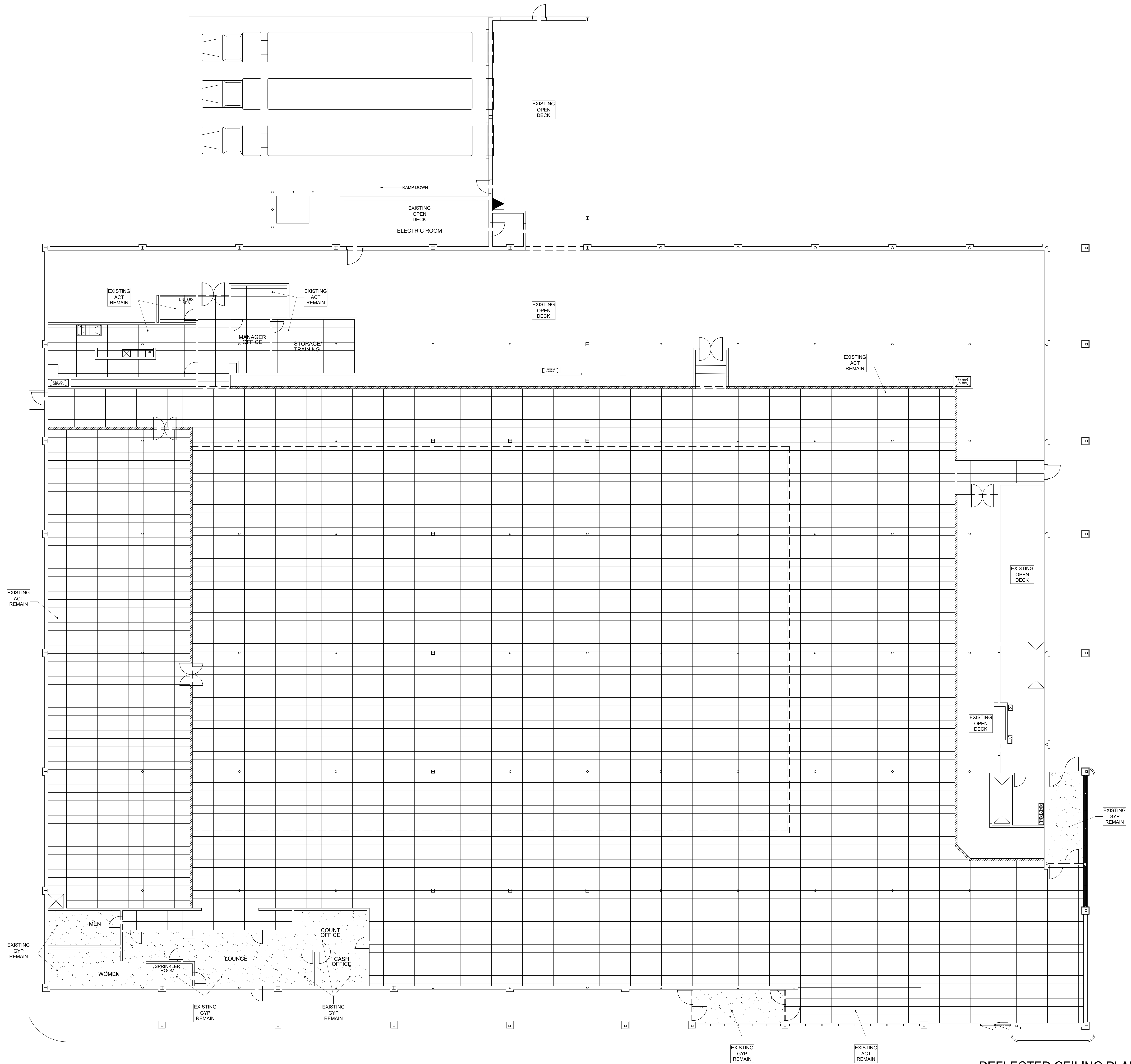


SHEET:

LEGEND	
	(GYP) GYPSUM BOARD
	(ACT) ACOUSTIC TILE
	CEILING HEIGHT GYPSUM BOARD
	CEILING HEIGHT ACOUSTIC TILE

LIGHTING LEGEND	
REFER TO SHEET E-6 LIGHTING PLAN FOR ACTUAL LIGHT SPECIFICATIONS	
	REMOTE EMERGENCY LIGHTING HEAD
	EMERGENCY EXIT SIGN
	EMERGENCY EXIT SIGN - REMOTE CAPABLE
	CANOPY LIGHT
	NEW 2 LAMP 4FT STRIP
	NEW 4 LAMP 8FT STRIP
	NEW 4 LAMP 8FT EMERGENCY STRIP
	NEW 4 LAMP 8FT EMERGENCY STRIP
	NEW 2X2 LED FLAT PANEL
	NEW 2X2 LED FLAT PANEL WITH EMERGENCY BALLAST
	NEW 2X2 LED FLAT PANEL WITH EMERGENCY BALLAST
	NEW 2X2 LED FLAT PANEL WIRED AS NIGHT LIGHT
	2 HEAD EMERGENCY LIGHT

**GENERAL NOTE:**  
ALL EXISTING LIGHTING AND CEILING TO REMAIN THROUGHOUT THE SPACE. I.C. TO CONFIRM CONDITION OF ACT TILES, GYP, AND ALL LIGHTING. REPAIR WHERE NEEDED.



DATE	REVISION
BIG LOTS STORE #4520 CENTRAL VERMONT SHOPPING CENTER 1400 ROUTE 302 BERLIN, VT 05602	
SQUARE FOOTAGE	
Area	SqFt
SALES FLOOR	31,887
TOTAL BUILDING	53,681
DATE DRAWN:	08/29/2023
DRAWN BY:	LR
SCALE:	1/8" = 1'-0"
BIG LOTS STORES, LLC. STORE PLANNING DEPT. 4900 E. DUBLIN GRANVILLE RD COLUMBUS, OHIO 43081 PHONE: (614) 278-6800	
SHEET: A-3	

REFLECTED CEILING PLAN

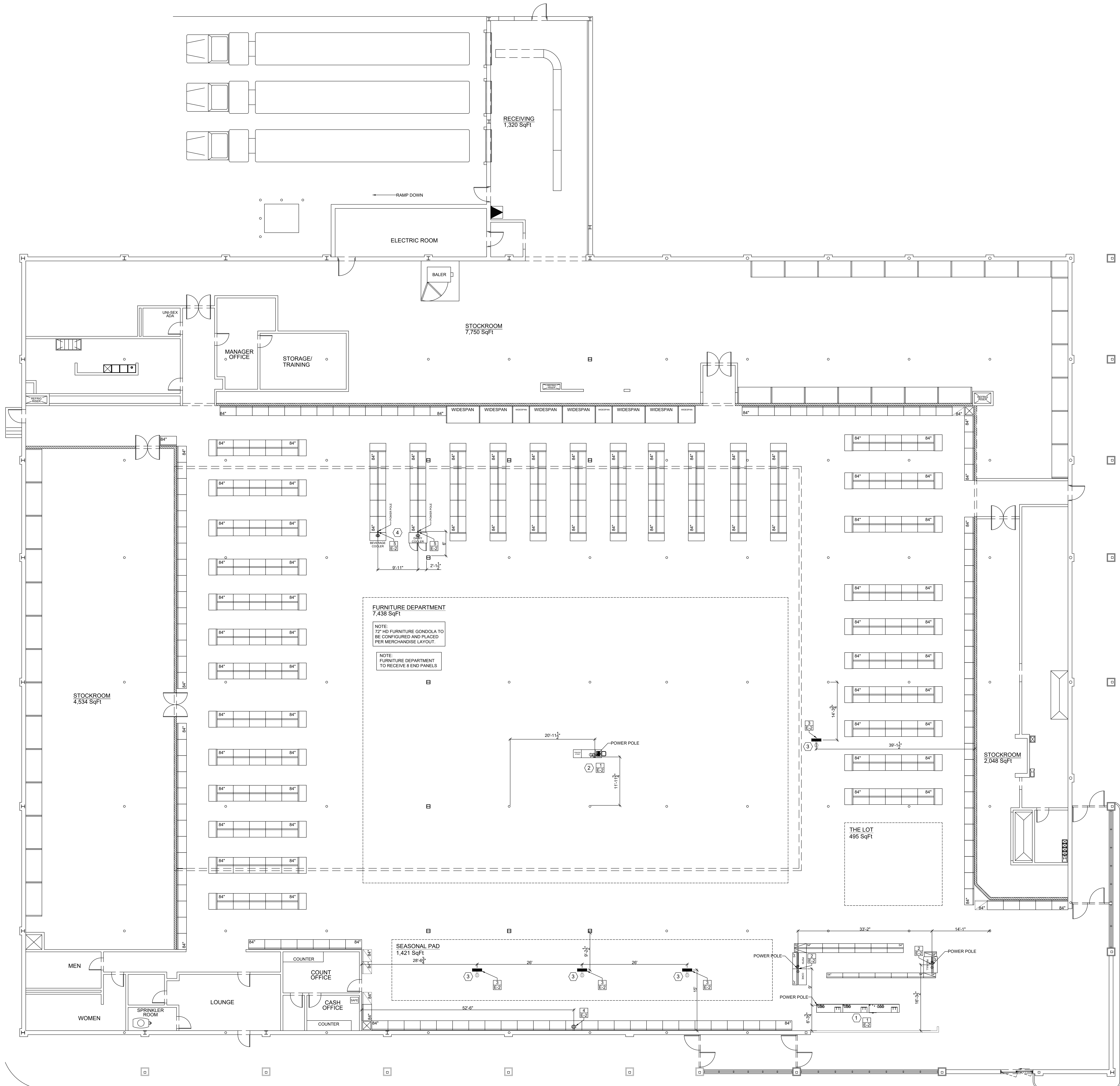
LEGEND	
	NEW WALL
	EXISTING WALL
	DETAIL/NOTE SHEET NUMBER

**CODED NOTES**

- 1 NEW FRONTEND CHECKOUTS. REUSE EXISTING CIRCUITS. ELECTRICAL CONTRACTOR TO CONFIRM CIRCUIT COMPLIES WITH E-2 NOTE.
- 2 NEW FURNITURE CHECKOUT. REUSE / RELOCATE EXISTING CIRCUITS. CONFIRM CIRCUIT COMPLIES WITH E-2 NOTE.
- 3 RELOCATED CORD REEL. REUSE / RELOCATE EXISTING CIRCUIT. CONFIRM CIRCUIT COMPLIES WITH E-2 NOTE.
- 4 RELOCATED BEVERAGE COOLER REUSE / RELOCATE EXISTING CIRCUITS. CONFIRM CIRCUIT COMPLIES WITH E-2 NOTE. WORK TO BE COMPLETED BY ILLUMETEK.

**ELECTRICAL LEGEND**

- COMMON GROUND CONVENIENCE DOUBLE DUPLEX RECEPTACLE TO BE NEMA(2)-(5-20R (HUBBLE MODEL #HBL552))
- CORD REEL (SEE NOTE #5 SHEET E-2)



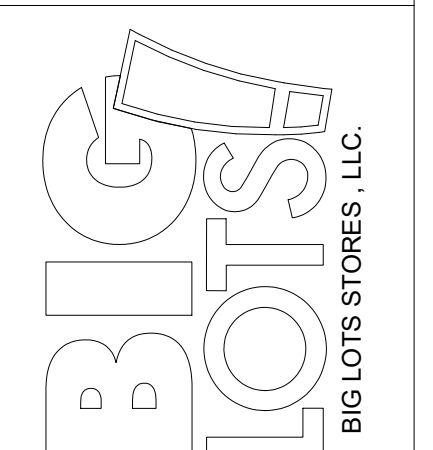
DATE: \_\_\_\_\_ REVISION: \_\_\_\_\_

**BIG LOTS STORE #4520**  
**CENTRAL VERMONT SHOPPING CENTER**  
 1400 ROUTE 302  
 BERLIN, VT 05602

SQUARE FOOTAGE	
Area	SqFt
SALES FLOOR	31,897
TOTAL BUILDING	53,681

DATE DRAWN: 08/29/2023  
 DRAWN BY: LR  
 SCALE: 1/8" = 1'-0"

**BIG LOTS STORES, LLC.**  
 STORE PLANNING DEPT.  
 4900 E. DUBLIN GRANVILLE RD  
 COLUMBUS, OHIO 43081  
 PHONE: (614) 278-6800



**BASIC WIRING REQUIREMENTS**

- PLEASE REVIEW SPECIFICATIONS BELOW AND REFER TO SHEET E-1 FOR DESIGNATED LOCATIONS.
- NO ADDITIONS OR CHANGES TO THIS SCOPE OF WORK CAN BE MADE WITHOUT PRE-APPROVAL BY AUTHORIZED BIG LOTS REPRESENTATIVE.
- ALL WORK IS TO BE DONE IN A WORKMAN-LIKE MANNER, AND THE CONTRACTOR IS RESPONSIBLE FOR ALL PERMITS, INSPECTIONS, AND COMPLIANCE TO ALL NATIONAL AND LOCAL CODES AND REQUIREMENTS. EXISTING CIRCUITS AND RECEPTACLES ARE TO BE UTILIZED IN ALL CASES IF COST EFFECTIVE. PLEASE BREAK YOUR BID DOWN BY LINE ITEM WITH SPECIFICATIONS ON LABOR COSTS AND MATERIAL.
- ELECTRICIAN IS ALSO TO RETURN TO THE STORE 3-7 DAYS PRIOR TO DRY RUN OPENING TO VERIFY STORE LIGHTING IS FULLY FUNCTIONAL AND MAKE WHATEVER REPAIRS THAT MAY BE NEEDED.

ANY QUESTIONS PLEASE CALL: 614-278-6719 or 614-278-6946. THANK YOU FOR YOUR ATTENTION IN THIS MATTER.

**TABLE OF CONTENTS**

- CASHWRAP CABINETS/FURNITURE CABINETS
- EXTERIOR SIGNS
- AUTOMATIC DOORS
- CONVENIENCE RECEPTACLE
- CORD REELS / SEASONAL OUTLET
- ELECTRICAL WATER HEATER
- CASH ROOM
- EMPLOYEE LOUNGE
- MANAGER OFFICE
- BALER
- BEVERAGE COOLER / DAIRY COOLER
- DOORBELL
- PHONE SYSTEM & ALARM BOARD
- PVM OUTLET
- STORE LIGHTING
- DOCK LIGHT
- WATER COOLER
- HAND DRYER
- MOTION SENSOR
- VOLTAGE CEILING SENSOR
- EAS
- CHECKOUT COOLERS

**1) CASHWRAP CABINETS / FURNITURE CABINETS**

ELECTRICAL CONTRACTOR TO PROVIDE ONE (1) 120V/20AMP DEDICATED GROUND CIRCUIT FOR DG OUTLETS PER SECTION. ELECTRICAL CONTRACTOR TO PROVIDE ONE (1) DEDICATED 120V/20AMP CIRCUIT FOR CONVENIENCE OUTLETS PER SECTION. EACH STORE WILL BE PROVIDED WITH ONE SECTION OR TWO SECTIONS OF CASHWRAP CABINETS. IF ONLY ONE (1) SECTION OF CHECKOUT CABINETS IS PROVIDED, ELECTRICAL CONTRACTOR MUST PROVIDE TWO (2) DEDICATED GROUND CIRCUITS. ELECTRICAL CONTRACTOR TO PROVIDE TWO (2) DEDICATED GENERAL 120V/20AMP CONVENIENCE CIRCUITS. ELECTRICAL CONTRACTOR TO SEE SHEET E-1 FOR QUANTITY OF SECTIONS OF CASHWRAP CABINETS AND LOCATION OF POWER POLES. ELECTRICAL CONTRACTOR TO SEE SHEET E-1 FOR ELECTRICAL CIRCUIT DESIGNATION.




**CASHWRAP CABINETS**

- EACH SECTION OF CABINETS TO BE SUPPLIED WITH ELECTRICAL CONDUCTORS VIA 2.25" X 2.25" TWIN CHANNEL TELE-POWER POLE FROM OVERHEAD TO THE CABINET. LENGTH OF TELE-POWER POLE TO BE DETERMINED BY THE CEILING/DECK HEIGHT. TELE-POWER POLE, WHITE IN COLOR.
- EACH CABINET IS TYPICALLY CONSTRUCTED WITH ELECTRICAL BOXES AND DEVICES SUPPLIED. WIRE CONDUCTORS AND CONDUIT ARE SUPPLIED BY ELECTRICAL CONTRACTOR. ALL WIRE CONDUCTORS AND CONDUIT ARE TO BE RUN HORIZONTALLY THROUGH THE CABINET AS TO NOT INTERFERE WITH ADJUSTABLE SHELF PLACEMENT. ELECTRICAL CONTRACTOR WILL BE RESPONSIBLE FOR ALL CHASES THROUGH CASHWRAP CABINETS.

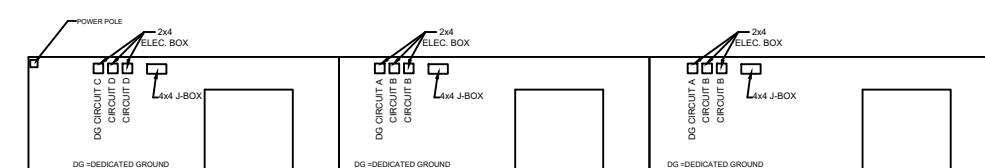
IN THE EVENT THAT THE CABINETS DO NOT CONTAIN ELECTRICAL BOXES, CONDUIT, AND DEVICES, THE CONTRACTOR IS TO SUPPLY AND INSTALL THE FOLLOWING COMPONENTS PER THE DIAGRAM BELOW.

**EACH CASHWRAP CABINET REQUIRES:**

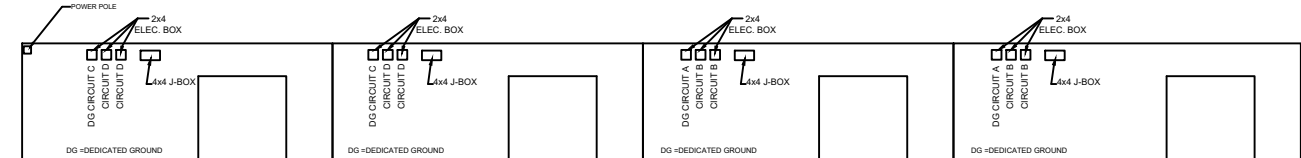
- ONE (1) 4"x 4" JUNCTION BOX
- THREE (3) 2"x 4" ELECTRICAL BOXES
- ONE (1) NEMA L5-15R ORANGE TWISTLOCK RECEPTACLE (HUBBELL IG4710 2 POLE 3 WIRE GROUNDING 15A/125VAC)
- TWO (2) NEMA 5-20R GENERAL DUTY DUPLEX RECEPTACLES (HUBBELL HBL 5362 20A/125VAC)
- ALL BOXES AND DEVICES TO HAVE APPROPRIATE COVER PLATES.

		
SPECIAL PURPOSE DUPLEX RECEPTACLES BACK AND SIDE WIRED		NEMA L5 15R 15A 125V UL/CSA 0.5 HP
DESCRIPTION	CATALOG NUMBER	
DEDICATED GROUND, FLUSH, ORANGE RTP FACE	IG4710	

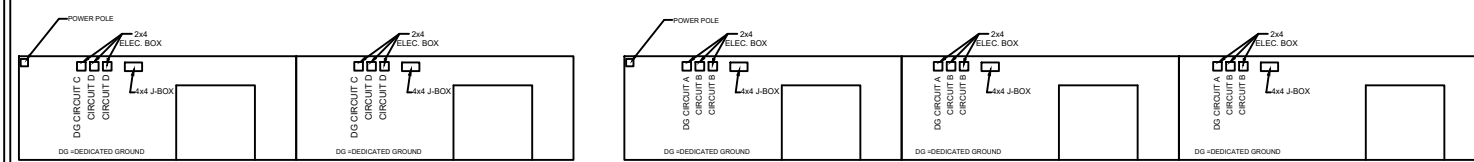
**FRONT END CHECKOUT WIRING**  
SCALE: NTS



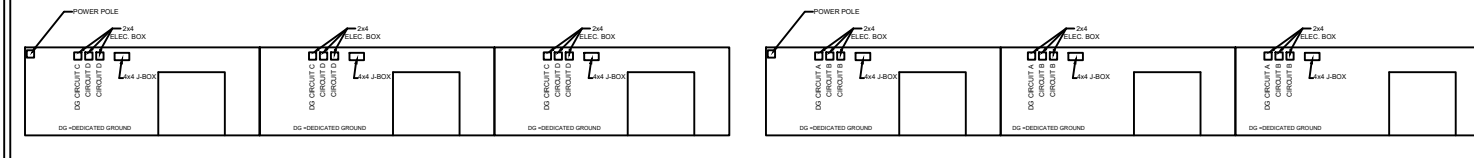
1 SECTION - 3 CHECKOUT CONFIGURATION



1 SECTION - 4 CHECKOUT CONFIGURATION



2 SECTION - 5 CHECKOUT CONFIGURATION



2 SECTION - 6 CHECKOUT CONFIGURATION

**2) CHECKOUT COOLERS:**

CONTRACTOR TO PROVIDE ONE (1) DEDICATED 120v/20amp CIRCUIT. CIRCUIT TO SUPPLY TWO (2) NEMA 5-20R GENERAL DUTY DUPLEX RECEPTACLE (HUBBELL HBL 5352, OR EQUIVALENT). ELECTRICAL CONTRACTOR TO INSTALL POWER POLE. ELECTRICAL CONTRACTOR SHALL SECURE POWER POLE TO FLOOR WITH FLOOR BASE. ELECTRICAL CONTRACTOR TO SECURE TOP OF POWER POLE WITH STRUT TO BAR JOIST ABOVE. ELECTRICAL CONTRACTOR TO MOUNT RECEPTACLES 8" A.F.F.. RECEPTACLES TO BE MOUNTED ON BOTH SIDES OF POWER POLE. ELECTRICAL CONTRACTOR TO SEE SHEET E-1 FOR LOCATION OF POWER POLE.

**FURNITURE CABINET**

- CONTRACTOR TO PROVIDE ONE (1) 120V/20AMP DEDICATED GROUND CIRCUIT (IDENTIFIED ON DIAGRAM AS D.G.) AND ONE (1) 120V/20AMP CONVENIENCE CIRCUIT (IDENTIFIED ON DIAGRAM AS A). ALL CIRCUITS TO HAVE BREAKER LOCKS FOR THE FURNITURE CASHWRAP CABINET.
- CABINET TO BE SUPPLIED ELECTRICAL CONDUCTORS VIA 2.25" X 2.25" TWIN CHANNEL TELE-POWER POLE FROM OVERHEAD TO THE CABINET. LENGTH OF TELE-POWER POLE TO BE DETERMINED BY THE CEILING/DECK HEIGHT. TELE-POWER POLE, WHITE IN COLOR.
- EACH CABINET IS TYPICALLY CONSTRUCTED WITH ELECTRICAL BOXES AND DEVICES SUPPLIED. WIRE CONDUCTORS AND CONDUIT ARE SUPPLIED BY CONTRACTOR.

IN THE EVENT THAT THE CABINET DOES NOT CONTAIN ELECTRICAL BOXES, CONDUIT, AND DEVICES THE CONTRACTOR IS TO SUPPLY AND INSTALL THE FOLLOWING COMPONENTS PER THE DIAGRAM BELOW.

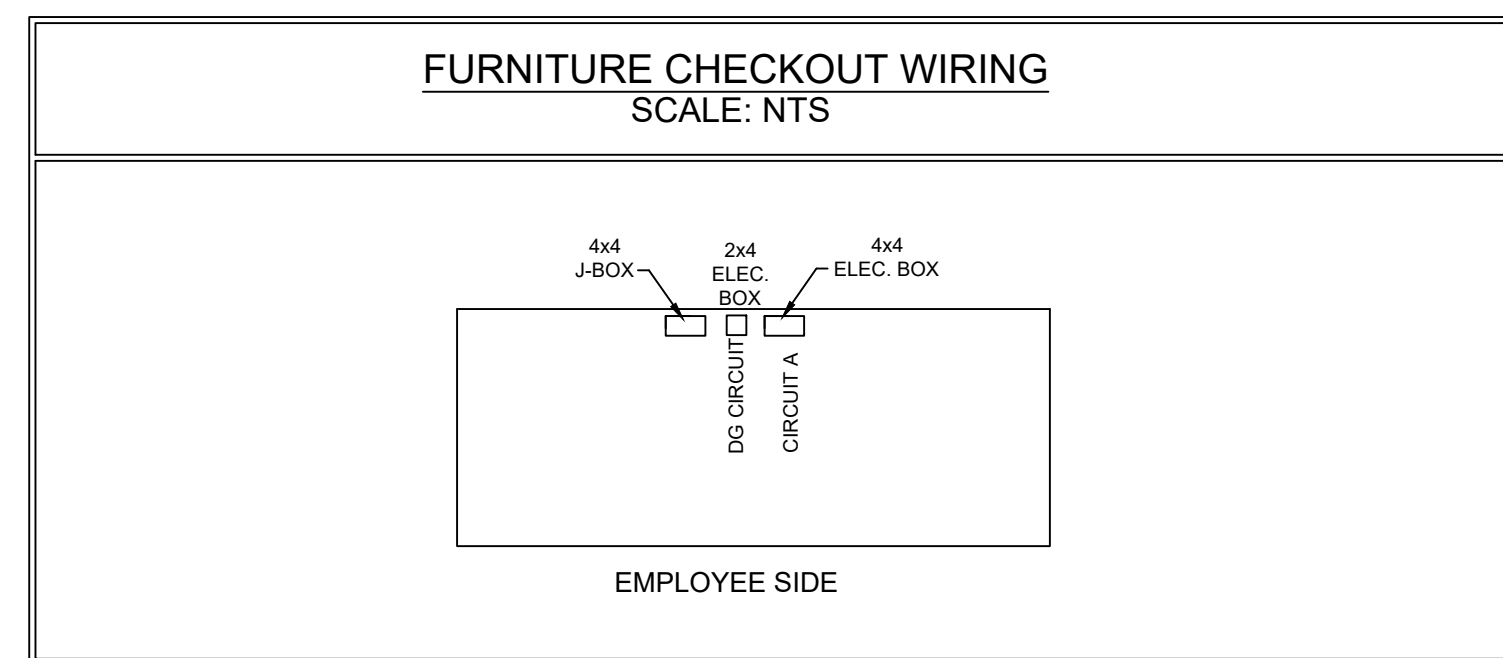
**EACH CABINET REQUIRES:**

- ONE (1) 4"x 4" JUNCTION BOX
- ONE (1) 4"x 4" ELECTRICAL BOX
- ONE (1) 2"x 4" ELECTRICAL BOX
- ONE (1) NEMA L5-15R ORANGE TWISTLOCK RECEPTACLE (HUBBELL IG4710 2 POLE 3 WIRE GROUNDING 15A/125VAC)
- TWO (2) NEMA 5-20R GENERAL DUTY DUPLEX RECEPTACLES (HUBBELL HBL 5362 20A/125VAC)
- ALL BOXES AND DEVICES TO HAVE APPROPRIATE COVER PLATES.

**POS/CASH REGISTER NOTES:**

\*NOTE: UNDER NO CIRCUMSTANCES IS ANYTHING TO BE WIRED INTO THE DG RECEPTACLES. THESE ARE FOR THE DESIGNATED CASH REGISTER PLUGS ONLY!

\*NOTE: DROPS TO EACH OF THE DESIGNATED CHECK-OUTS SHOULD BE RUN IN WHITE 2 CHANNEL TELE-POLES. D.G. CIRCUITS AND CONVENIENCE CIRCUITS ARE TO BE FED THROUGH THE SAME DROP. CHECK-OUT RECEPTACLES TO HAVE DEDICATED GROUND.

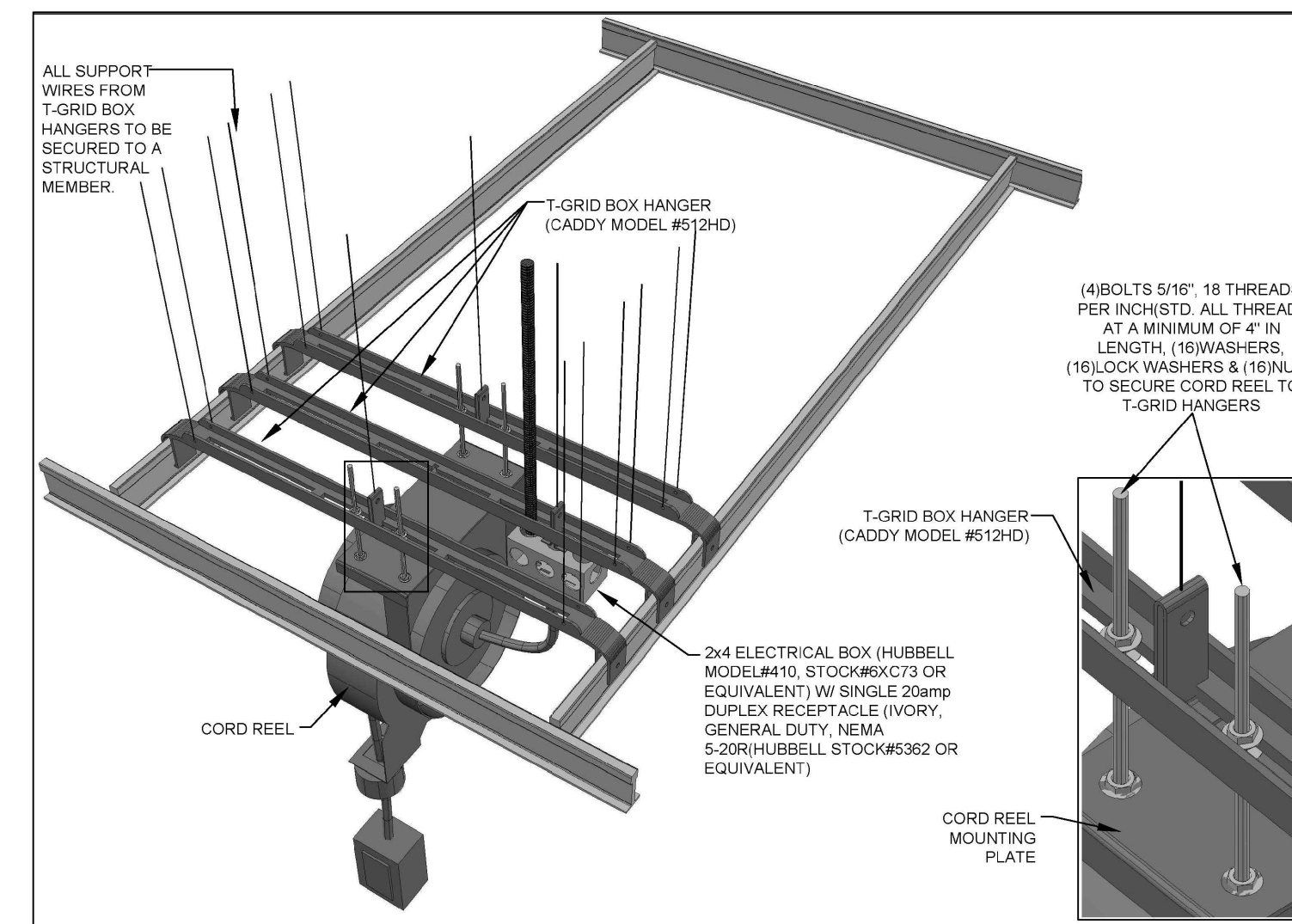


**3) CORD REELS:**

CONTRACTOR TO PROVIDE ONE (1) 120v/20amp CIRCUIT. CIRCUIT TO SUPPLY ONE (1) NEMA 5-20R GENERAL DUTY DUPLEX RECEPTACLE, FLUSH MOUNTED IN CEILING AT EACH DESIGNATED CORD REEL LOCATION. CONTRACTOR TO INSTALL A CORD REEL AT EACH LOCATION PER THE DIAGRAM BELOW.

**CORD REEL DETAILS AND SPECIFICATIONS:**

- ALEMITE CORD REEL MODEL 7260 OR EQUIVALENT TO BE:
- COMMERCIAL GRADE
- 20 AMP
- UL RATED
- 45' CORD
- GFCI RECEPTACLE

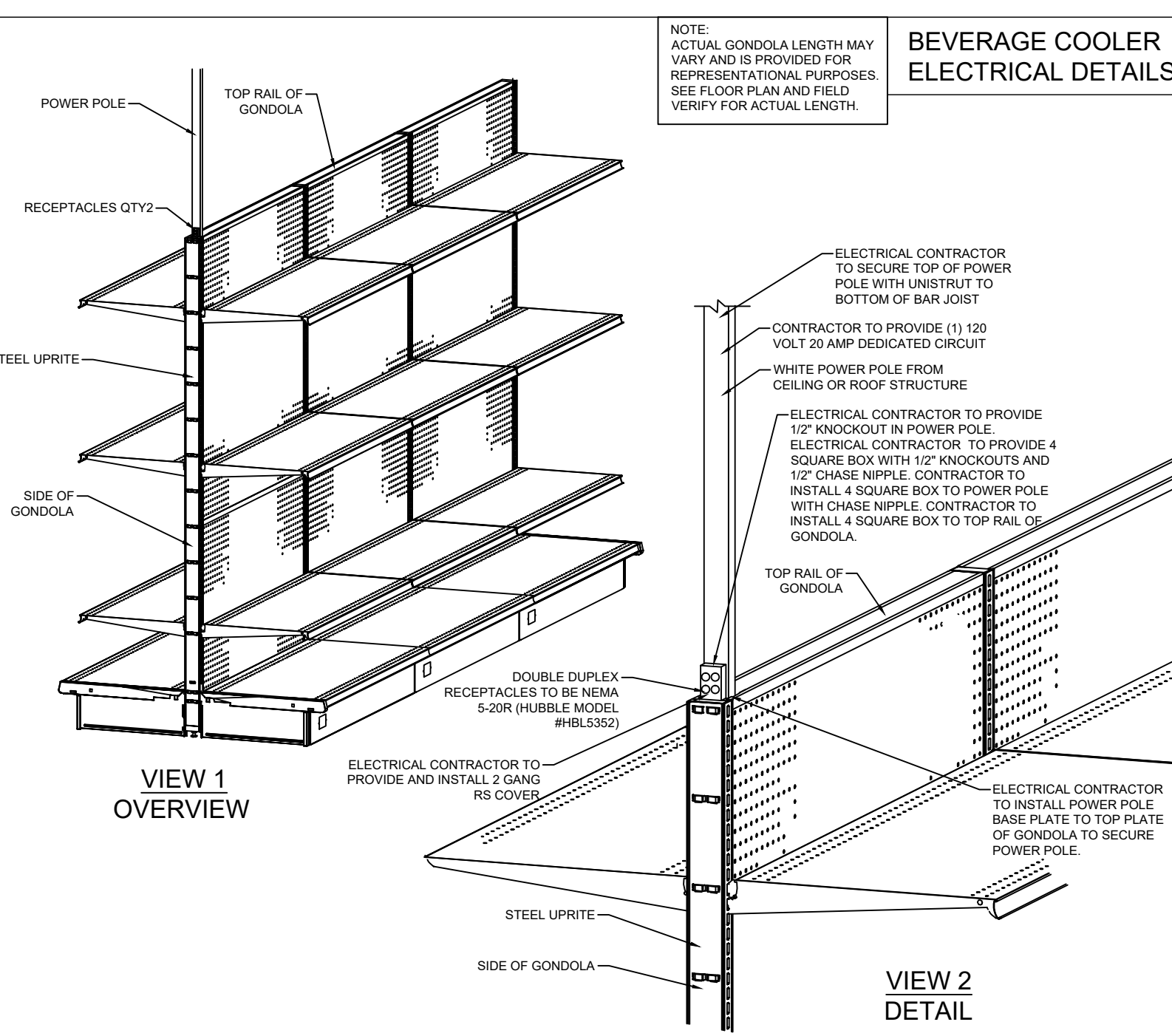


**4) SEASONAL OUTLET:**

CONTRACTOR TO PROVIDE ONE (1) 120V/20AMP CIRCUIT. CIRCUIT TO SUPPLY TWO (2) NEMA 5-20R DUPLEX RECEPTACLES (HUBBELL HBL 5352, OR EQUIVALENT) WITHIN A 4" BOX MOUNTED @ 8'-0" A.F.F.

**5) BEVERAGE COOLERS / DAIRY COOLER:**

CONTRACTOR TO PROVIDE -  
- (1) 120 VOLT 20 AMP DEDICATED CIRCUIT TO SUPPLY 2 GENERAL PURPOSE OUTLETS.  
CONTRACTOR TO INSTALL -  
- (1) WHITE COLOR POWER POLE.



REVISION  
DATE

BIG LOTS STORE #4520  
CENTRAL VERMONT SHOPPING CENTER  
1400 ROUTE 302  
BERLIN, VT 05602

SQUARE FOOTAGE	SqFt
Area	31,897
SALES FLOOR	53,681
TOTAL BUILDING	

DATE DRAWN: 08/29/2023  
DRAWN BY: LR  
SCALE: 1/8" = 1'-0"

BIG LOTS STORES, LLC.  
STORE PLANNING DEPT.  
4900 E. DUBLIN GRANVILLE RD  
COLUMBUS, OHIO 43081  
PHONE: (614) 278-6800

