



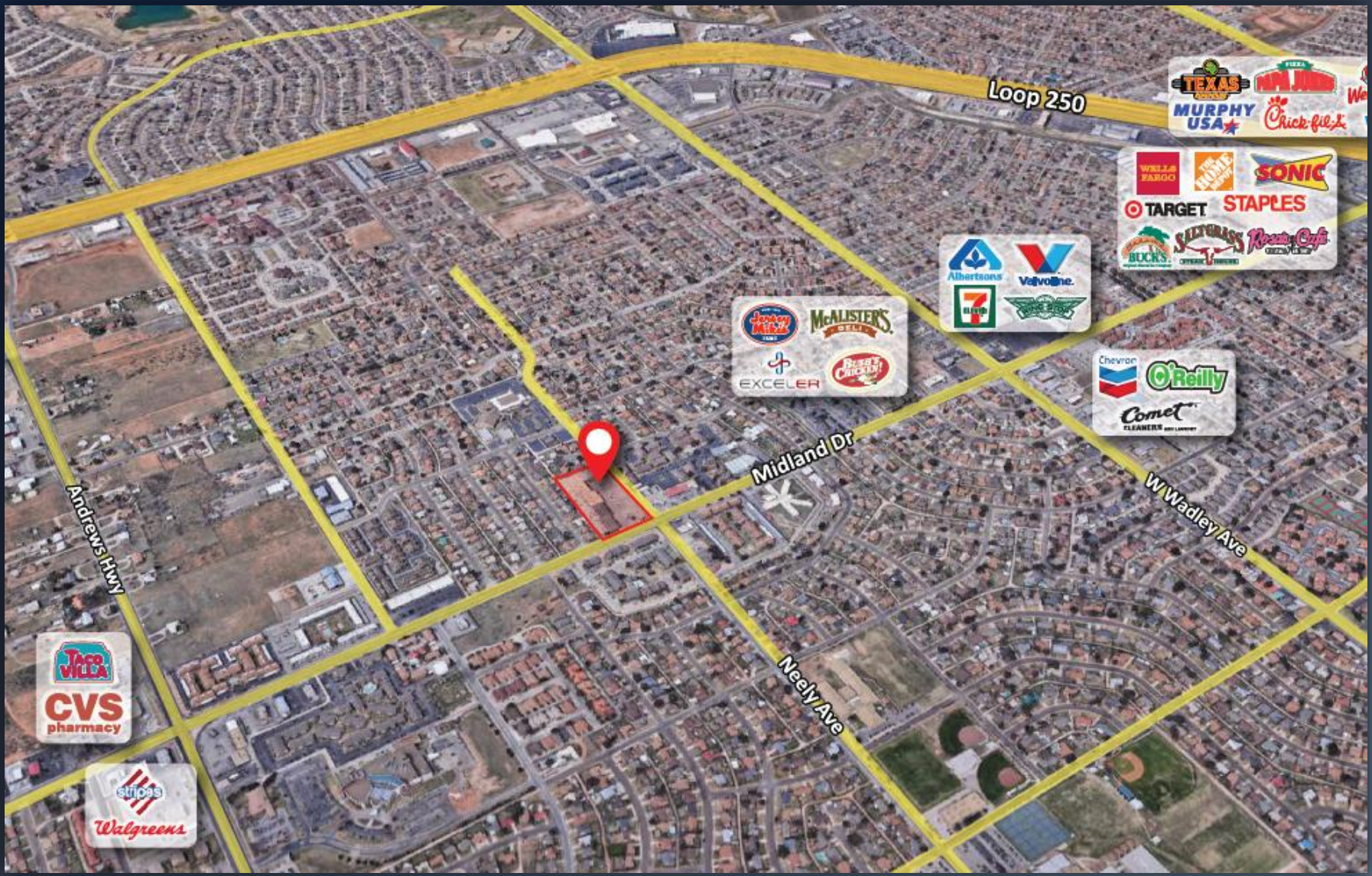
MESA VERDE SHOPPING CENTER

2215 N. Midland Dr. Midland, TX 79707



GORDON PARTNERS

43,000 SF	15 Tenants	Convenience Retail	Recent Remodel	25,000 cars per day
-----------	------------	--------------------	----------------	---------------------



LEASING INFO: PHILLIP CARAMEROS (832.937.5900) PHILLIP@GORDONPARTNERS.COM | JENNY NGUYEN (409.900.2060) JENNY@GORDONPARTNERS.COM



Suite	Tenant	SF	Suite	Tenant	SF
1A	Sherwin Williams Paint	7,800	4A	Tender Steps Daycare	2,262
2A	Hook & Reel Restaurant	5,428	4B	Salon A	2,643
2B	Great Wall Chinese Rest.	1,200	4C2	Midland Medical Supply	988
2D	Supercuts	1,540	4D	Smile Asian Market	3,590
3A1	Imagine Eyewear	1,443	5A	Smith's Shoes	3,606
3B	Tender Steps	2,450	5B	Available	1,500
3CD	Available	3,909	5C	Mayflower Dental	2,210
			5D	Annie's Nail's	1,904

Population (2024)

1 mile	14,937
3 mile	82,395
5 mile	127,767

Avg. HH Income (2024)

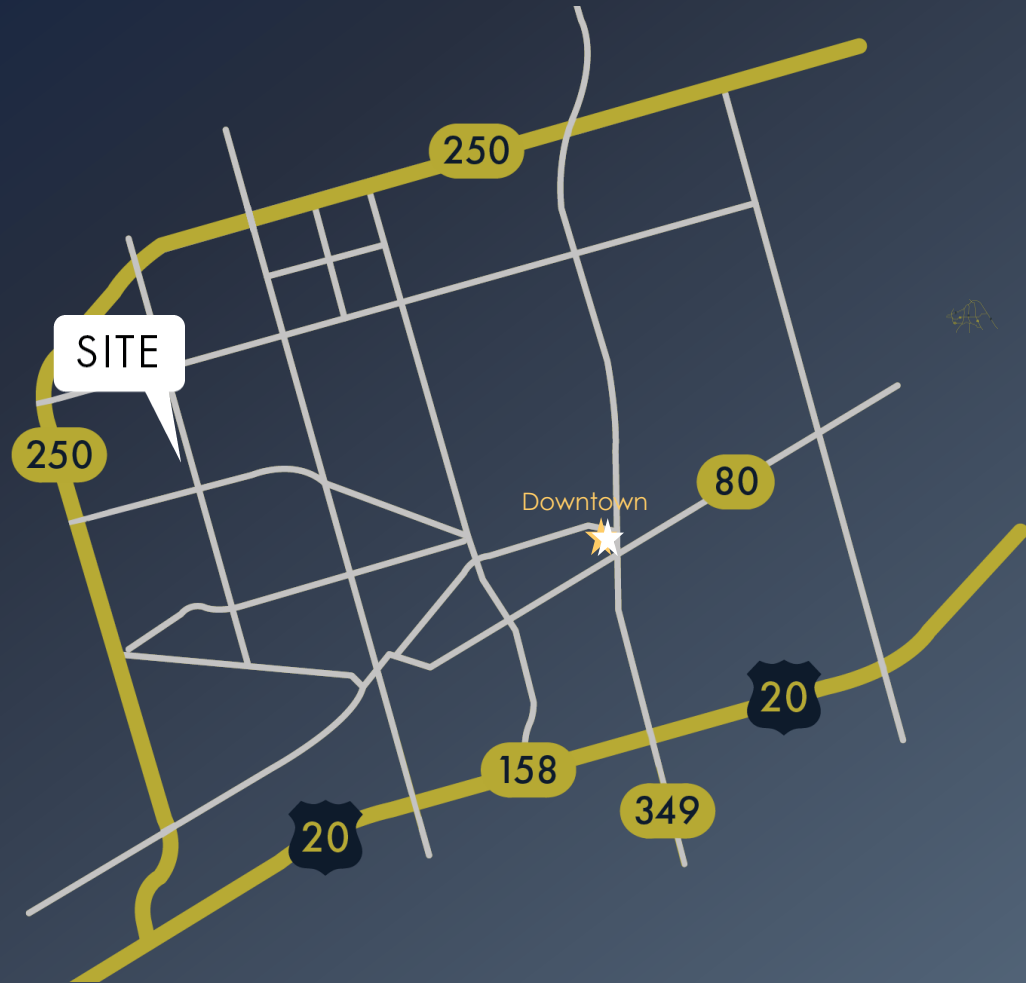
1 mile	\$105,975
3 mile	\$147,744
5 mile	\$139,315

Employees

1 mile	4,170
3 mile	26,194
5 mile	62,892

Traffic Counts (daily)

Midland Dr.	26,000
Neely Dr.	3,500



TENANTS INCLUDE:



MAYFLOWER
Dental Care



SUPERCUTS



Salon A

AREA RETAILERS









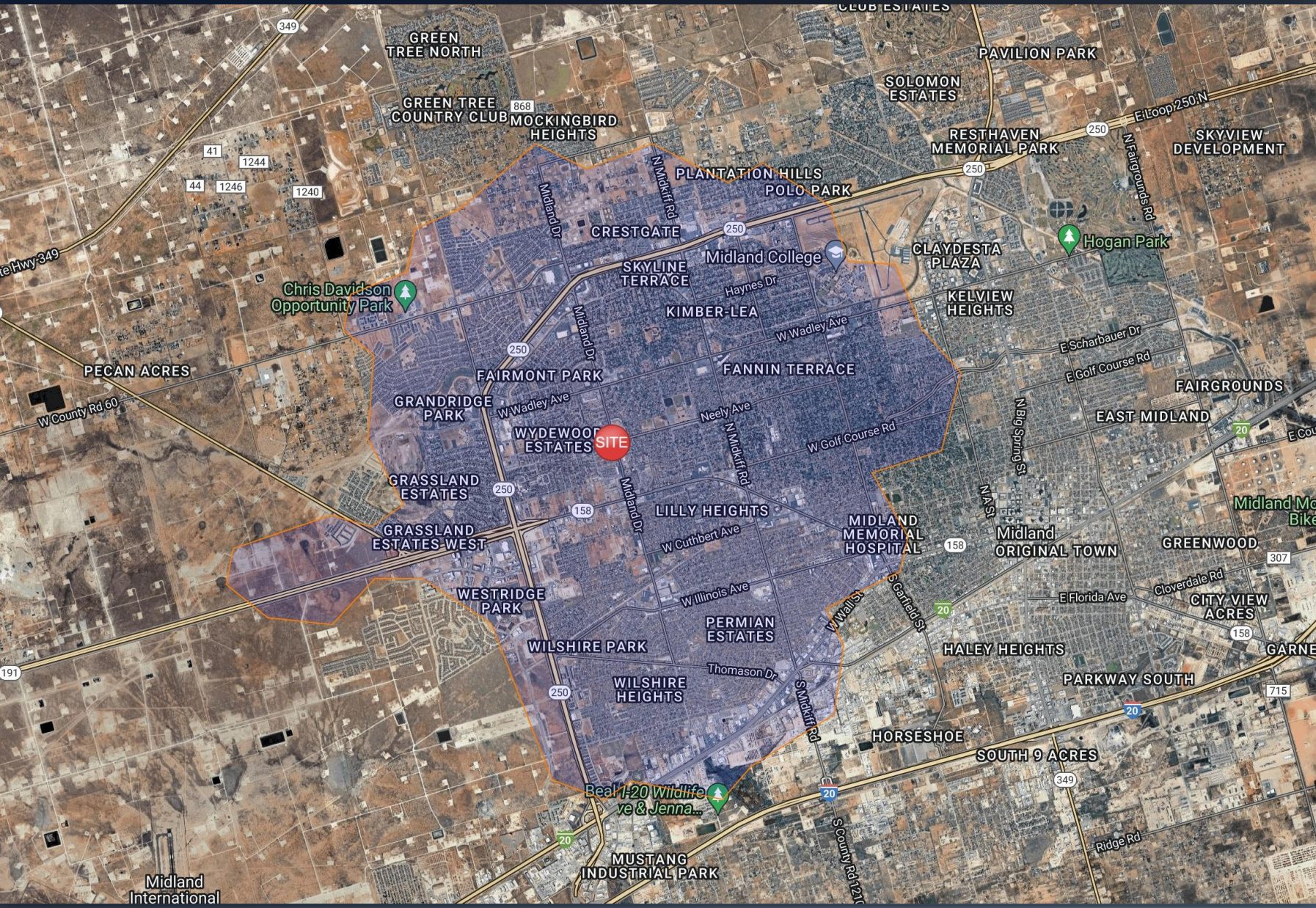







- ➔ Signalized intersection
- ➔ Excellent Visibility
- ➔ 4 access points
- ➔ Neighborhood intersection

26,194 Employees
 30,467 Households
 82,395 people
 \$170K Avg. HH Income



PERMIAN BASIN OIL PLAY

The Permian Basin is one of the strongest oil fields in the world. It produces 40% of the oil and 15% of the natural gas that is consumed in the US. It is an oil-and-gas rich geologic formation located in West Texas and the adjoining area of southeastern New Mexico. It covers an area approximately 250 miles wide and 300 miles long. Many productive mineral layers lie across the region and range in depth from a few hundred feet to 5 miles under the surface. The Permian Basin currently produces an annual average of 5 million barrels of oil per day. It has produced over 30 billion barrels of oil and 75 trillion cubic feet of gas, and it is estimated by industry experts to contain recoverable oil and natural gas resources exceeding what has been produced over the last 90 years.

Recent use of enhanced-recovery practices such as hydraulic fracturing (fracking) in the Permian Basin has produced a substantial impact on U.S. oil production. Since 2005 the number of rigs in the Permian basin has more than tripled as oil companies capitalize on the sound and profitable economics of local energy production. In May 2013, more than 30,000 Texans were working directly within the Permian Basin oilfields.



Chevron Campus



Pioneer Resources Building



Occidental Petroleum Building



Anadarko Petroleum Building

