

6400 Queens Ave NE

Otsego, MN 55330



Property Highlights

- 100,000 SF available now
- \$10.50 PSF Gross (includes utilities)
- Newly constructed crossdock facility
- Immediate access to Highway 101
- Dedicated truck parking

Contact Us

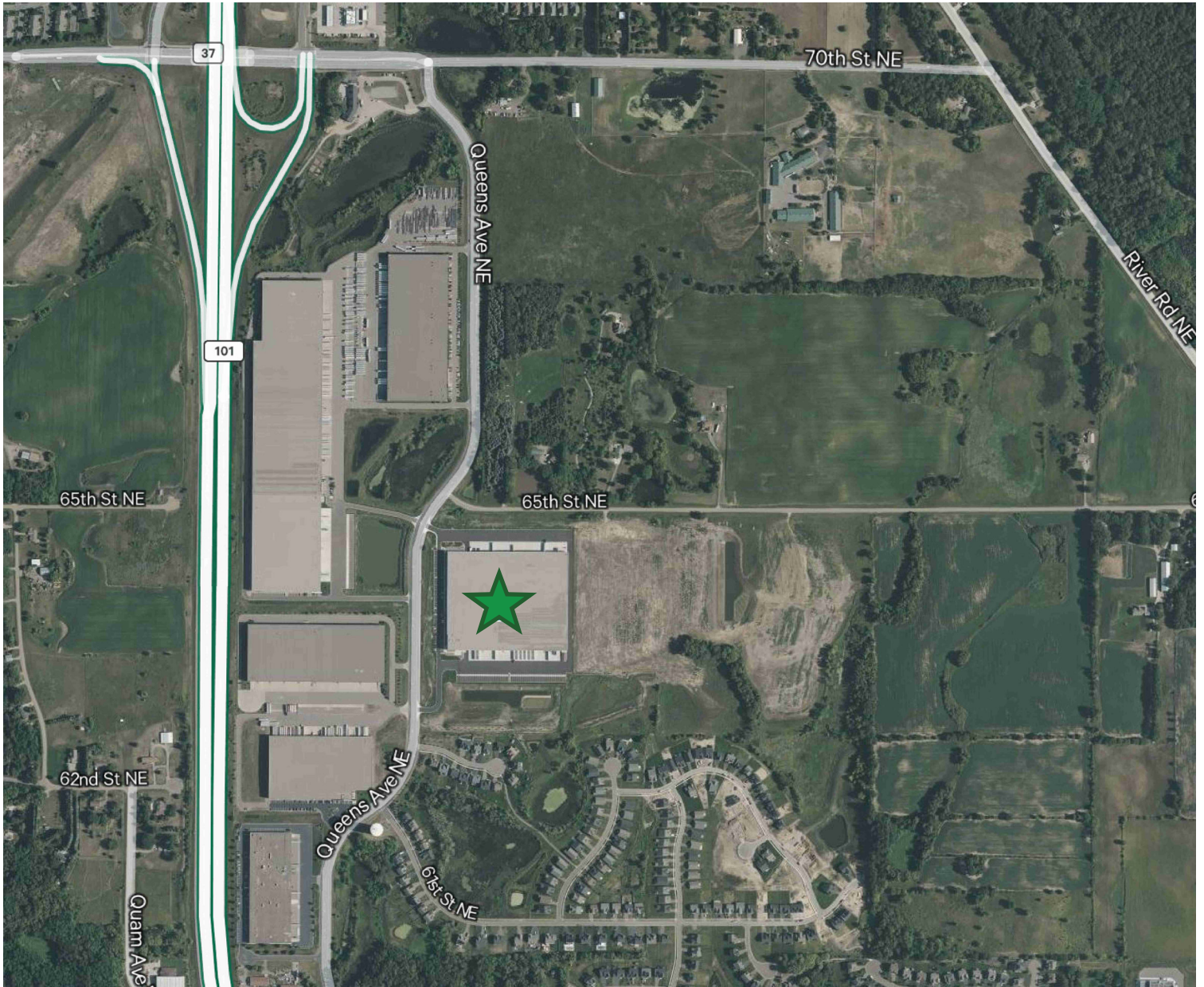
DAN SWARTZ
Executive Vice President
+1 952 924 4652
dan.swartz@cbre.com

AUSTIN LOVIN
First Vice President
+1 612 336 4255
austin.lovin@cbre.com

NEIL KOLATKAR
First Vice President
+1 952 924 4636
neil.kolatkar@cbre.com

6400 Queens Ave NE

Otsego, MN 55330



Space Overview

+Total Building: 401,544 SF

+Total Available: 100,000 SF

+Clear Height: 36' Clear

+Column Spacing: 50' x 50' with 60' speed bay

+Parking: Ample

+Year Built: 2023

+Lease Rates: \$10.50 PSF Gross (includes utilities)

+Dedicated Truck Parking

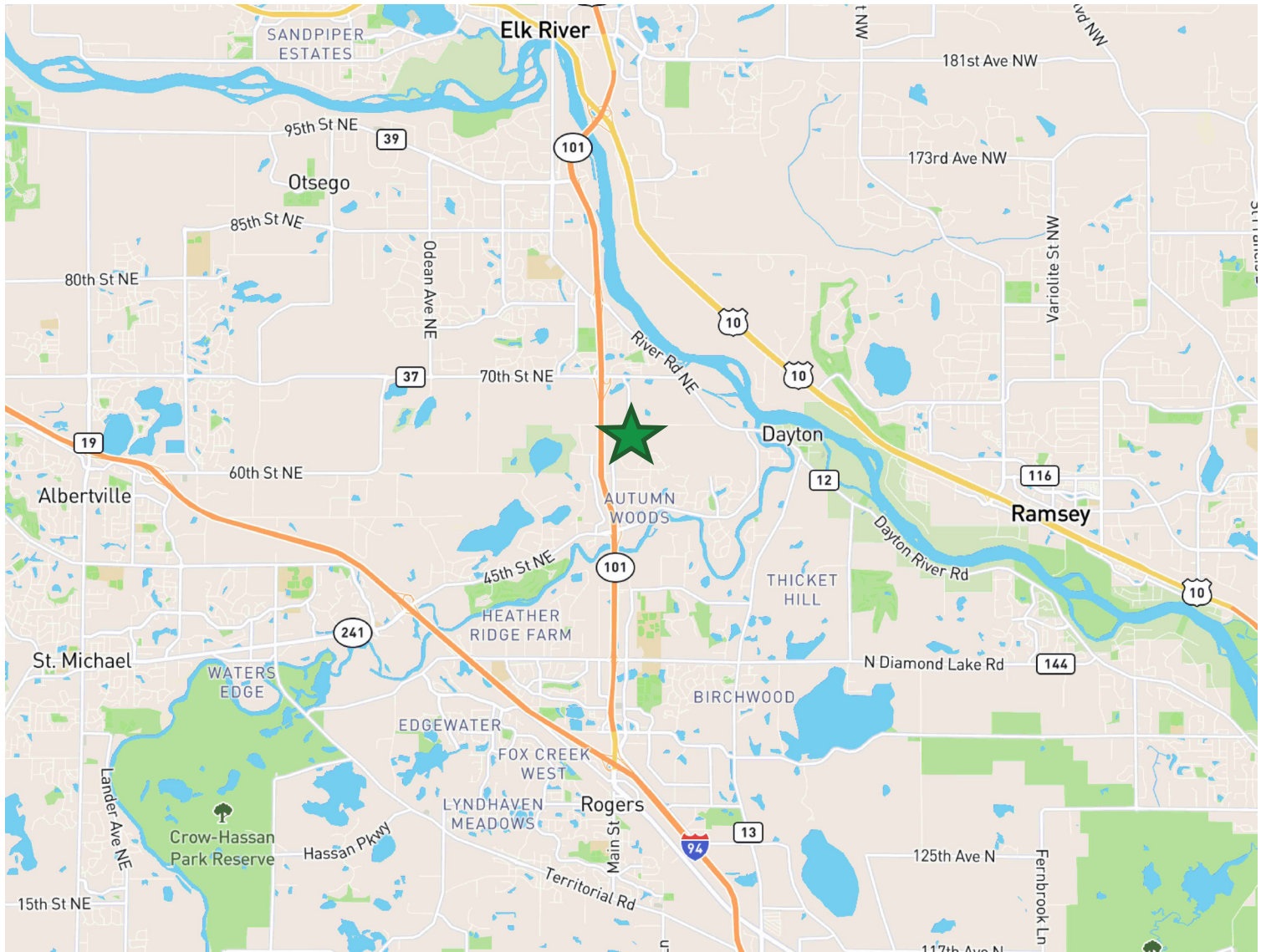
+Available Now

For Sublease



6400 Queens Ave NE

Otsego, MN 55330



Contact Us

DAN SWARTZ

Executive Vice President
+1 952 924 4652
dan.swartz@cbre.com

AUSTIN LOVIN

First Vice President
+1 612 336 4255
austin.lovin@cbre.com

NEIL KOLATKAR

First Vice President
+1 952 924 4636
neil.kolatkar@cbre.com

© 2025 CBRE, Inc. All rights reserved. This information has been obtained from sources believed reliable, but has not been verified for accuracy or completeness. You should conduct a careful, independent investigation of the property and verify all information. Any reliance on this information is solely at your own risk. CBRE and the CBRE logo are service marks of CBRE, Inc. All other marks displayed on this document are the property of their respective owners, and the use of such logos does not imply any affiliation with or endorsement of CBRE. Photos herein are the property of their respective owners. Use of these images without the express written consent of the owner is prohibited.

