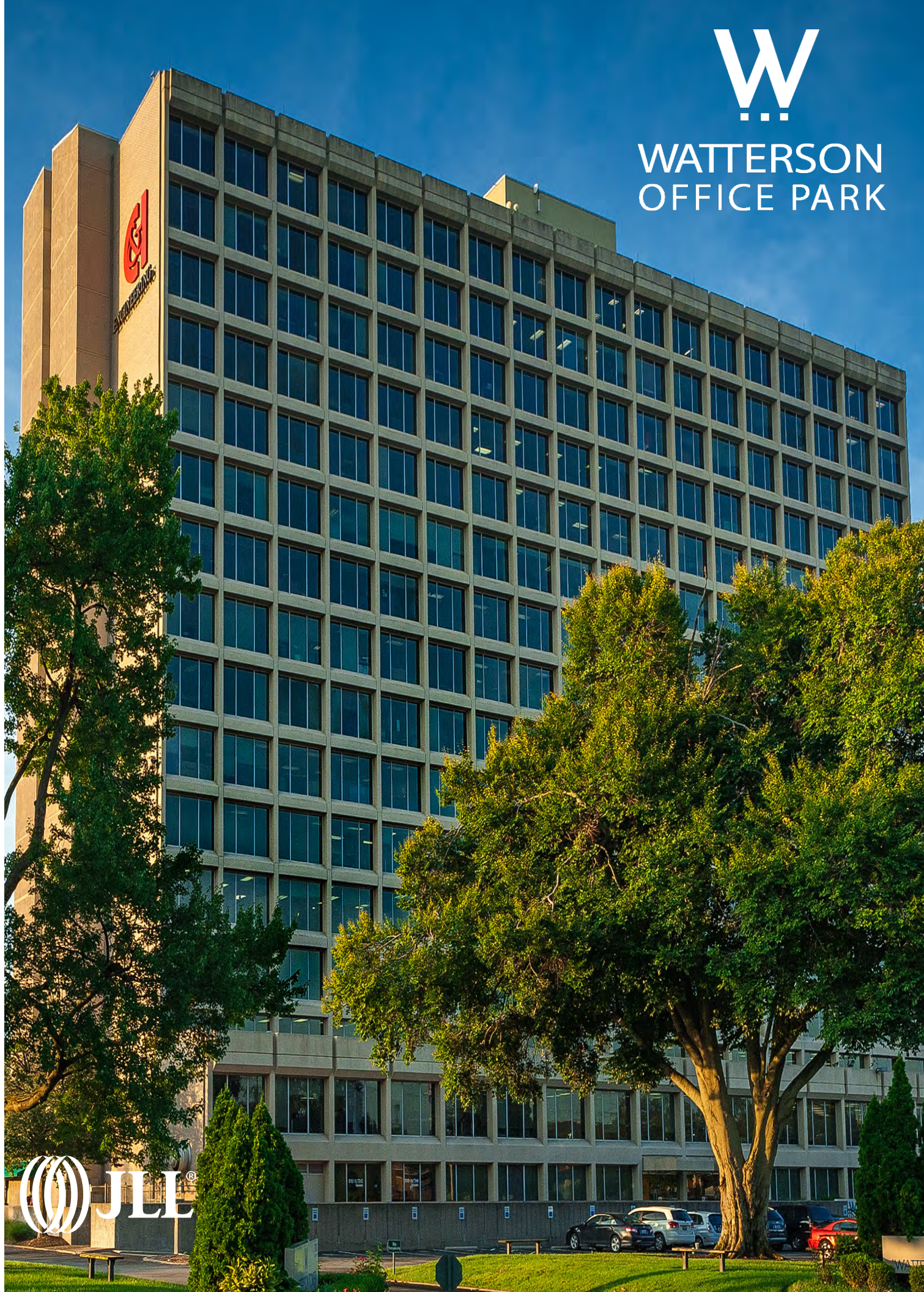




WATTERSON OFFICE PARK



Watterson Office Park is a signature three-building campus conveniently located in suburban Louisville. The park offers several available suite options ranging from 574 square feet to 16,748 square feet.

- 1930 Bishop Lane
16 floors
16,748 s.f. floorplates
- 1941 Bishop Lane
10 floors
10,500 s.f. floorplates
- 1951 Bishop Lane
5 floors
15,520 s.f. floorplates

Premium access and amenities

- Centralized location provides convenient access to downtown Louisville and surrounding areas
- Minutes to Interstate-264 and Interstate-65
- Prominent visibility from Interstate-264
- Several on-site amenities including two restaurants, sundry shop, tenant lounge / WiFi café, private meeting area and YMCA





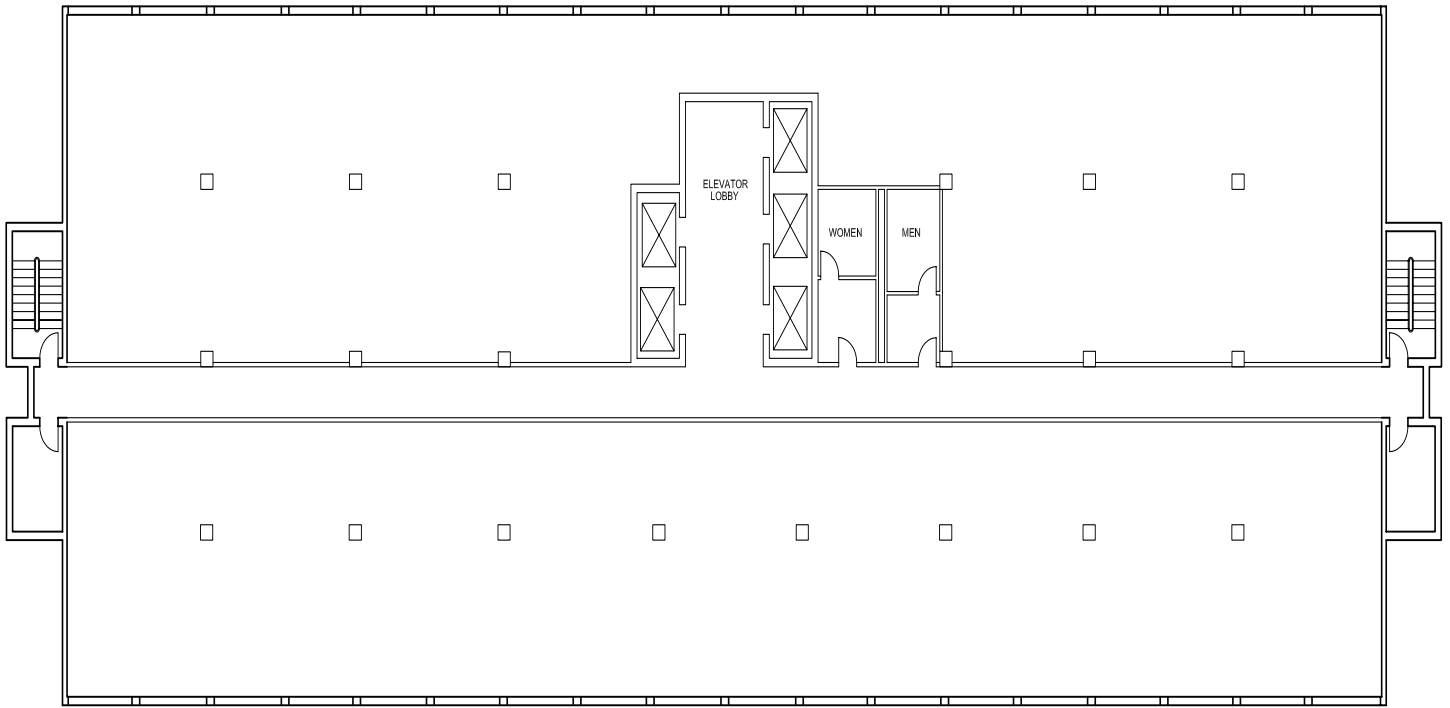
Office Park Highlights

- Recently updated lobbies and entrance finishes
- Abundant surface parking
- Fiber connection between all three properties
- On-site generators for tenant use
- On-site property management
- 24-hour security

On-site Amenities

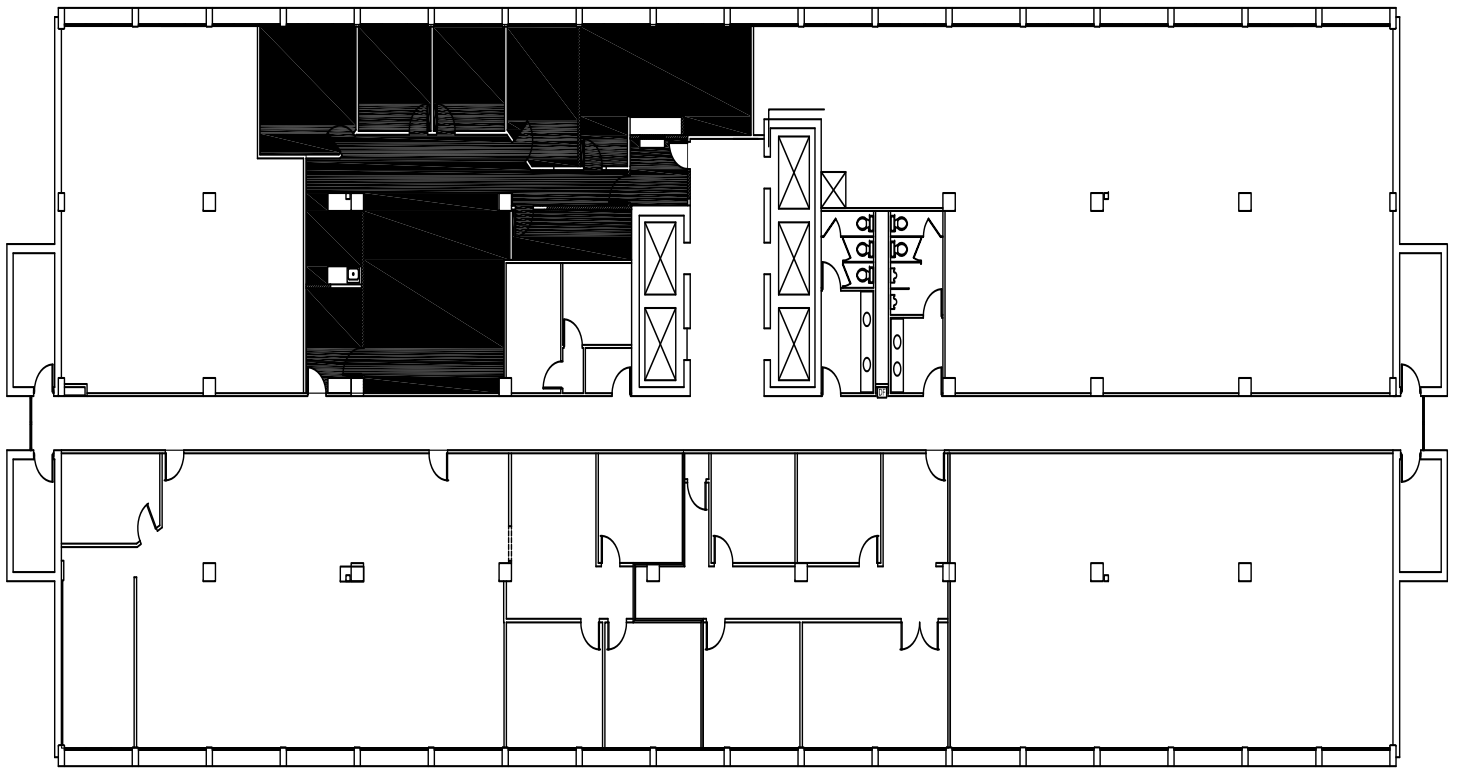
- Common conference room
- Seasonal on-site food trucks
- Tenant lounge
- WiFi / Internet Café
- ATM
- Lee's Kitchen
- YMCA
- Executive Bistro

Expressway (North)



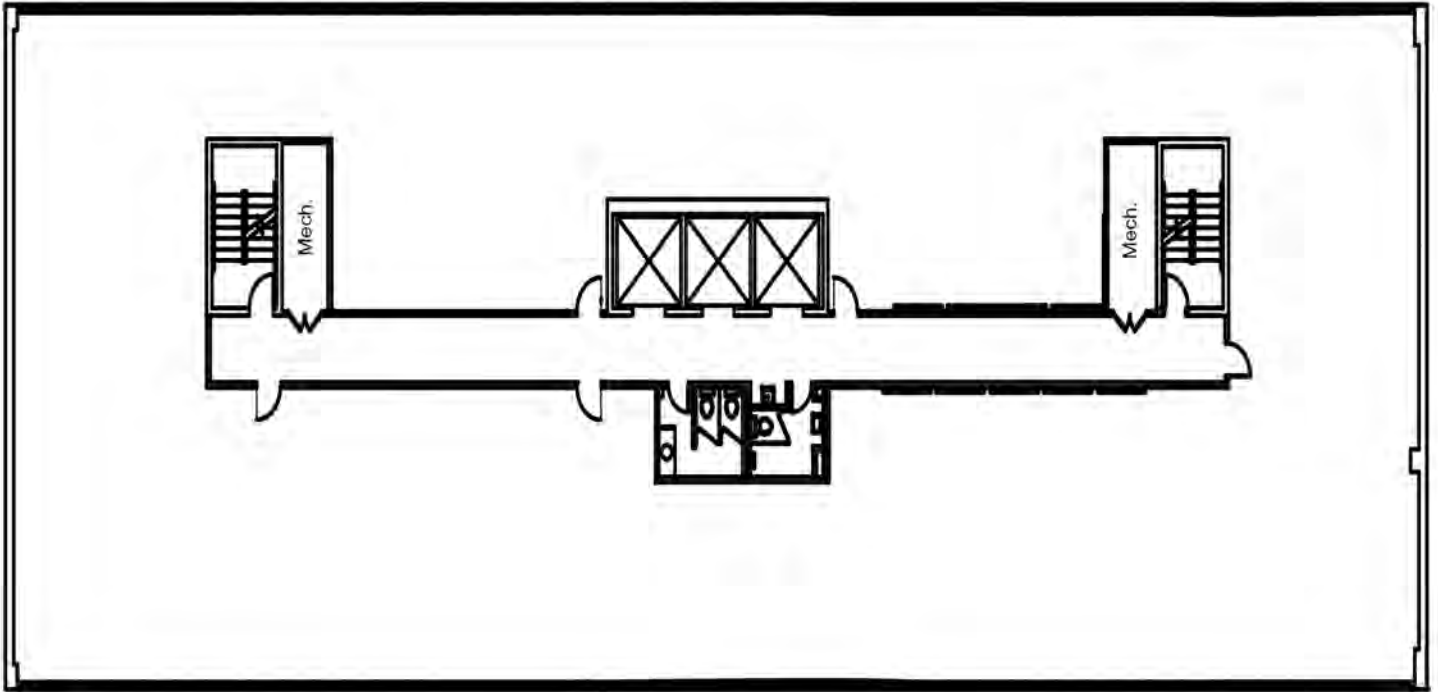
1930 Bishop Lane

- SUITE 105: 1,609 S.F.
- SUITE 600: 16,748 S.F.
(full floor)
- SUITE 1023: 1,726 S.F.



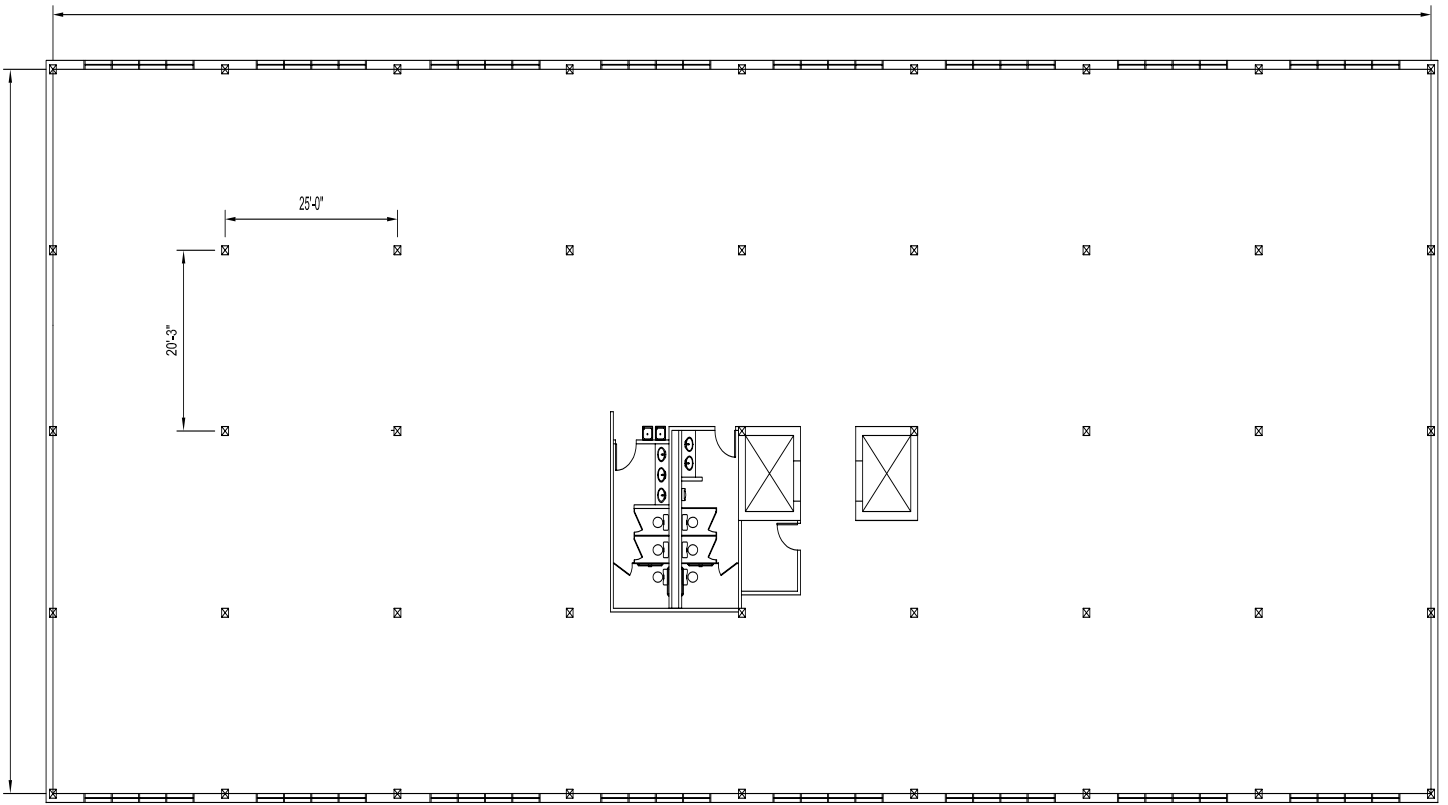
1930 Bishop Lane

6th Floor - Leased Area



1941 Bishop Lane

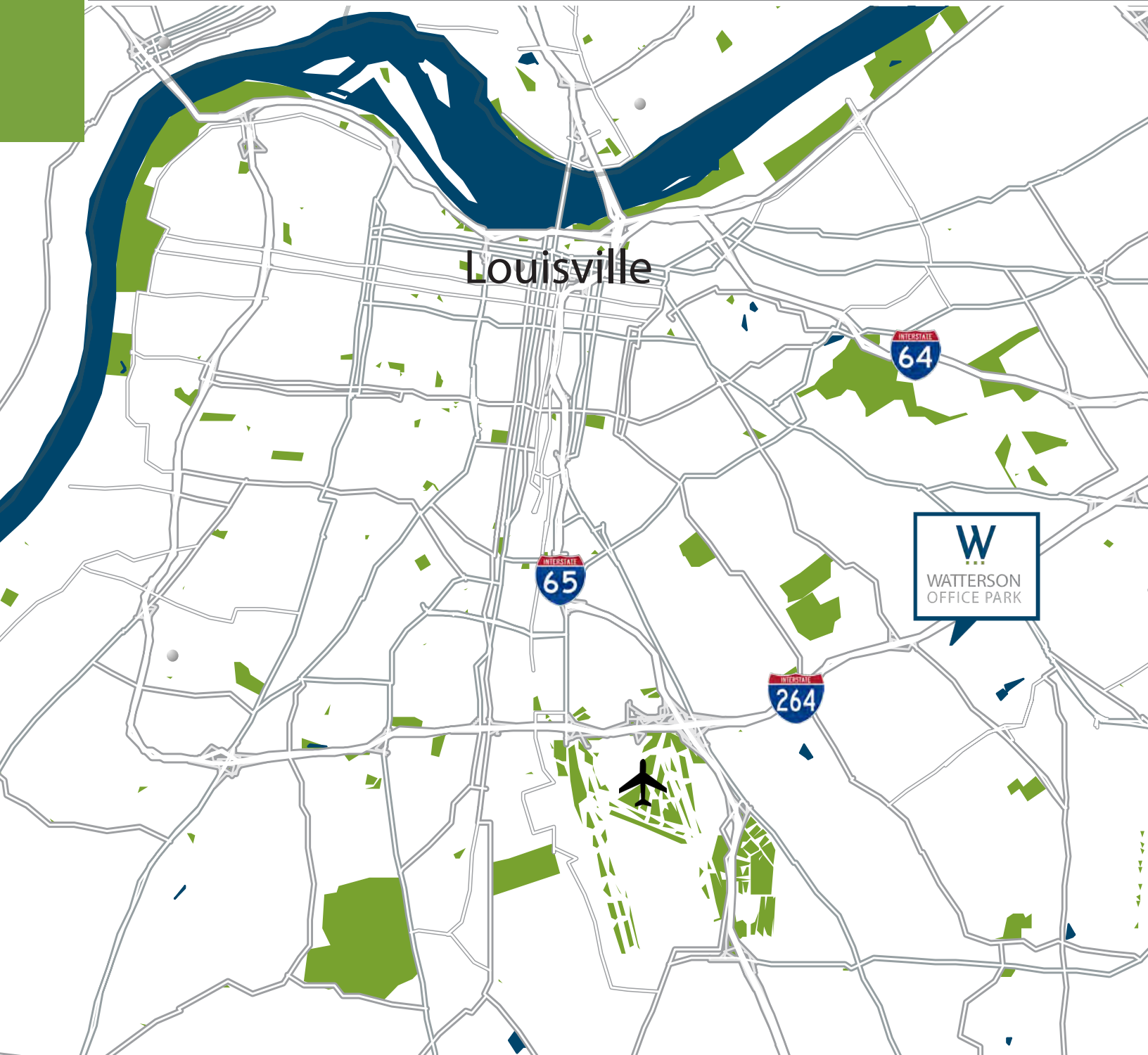
SUITE 109:	686 S.F.
SUITE 112:	400 S.F.
SUITE 200:	10,504 S.F. <i>(full floor)</i>
SUITE 405:	677 S.F.
SUITE 504:	1,518 S.F.
SUITE 508:	1,221 S.F.
SUITE 700:	1,506 S.F.
SUITE 708:	686 S.F.
SUITE 800:	2,298 S.F.



1951 Bishop Lane

SUITE 100: 6,860 S.F.
SUITE 102: 1,613 S.F.

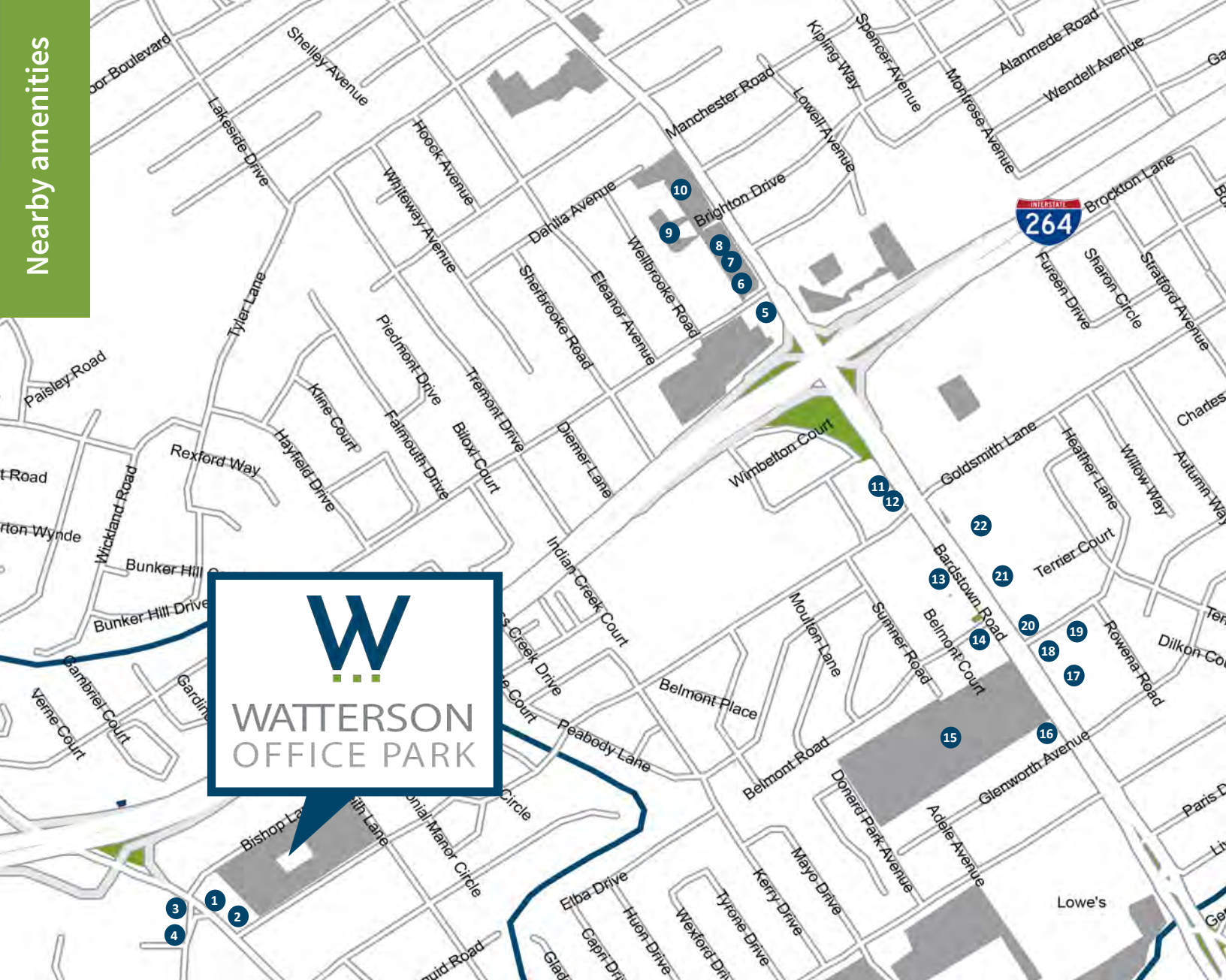
Watterson Office Park is centrally located within Greater Louisville and provides easy access to major interstates, Louisville Muhammad Ali International Airport and downtown.



Travel distances

- Louisville Muhammad Ali International Airport 3.9 miles
- University of Louisville 5.2 miles
- Downtown Louisville

Nearby amenities



Dining

- | | | |
|---------------------------------|-------------------------------------|--|
| 1 Dunkin' Donuts | 8 Buckhead Mountain Grill | 16 Chick-fil-A |
| 2 Subway | 9 El Nopal | 17 Mi Sueno Restaurant |
| 3 Yummy Pollo | Subway | El Caporal |
| Oriental Star | 10 Orange Leaf Frozen Yogurt | 18 Starbucks |
| Mi Pueblo Mexican Cuisine | 11 Steak 'n Shake | 19 Penn Station East Coast Subs |
| 4 Waffle House | 12 Rally's | 20 Heitzman Bakery |
| 5 Winston's Restaurant | 13 McDonald's | 21 Popeyes Louisiana Kitchen |
| The Bakery | 14 KFC | 22 DQ Grill & Chill |
| 6 Heine Brother's Coffee | 15 Costco | |
| 7 LIFEbar | | |
| Rocky's Pizza & Panini | | |



WATTERSON OFFICE PARK

1930 Bishop Lane
1941 Bishop Lane
1951 Bishop Lane
Louisville, Kentucky 40218

wattersonofficepark.com



For leasing information contact:

Doug Owen, SIOR
+1 502 394 2516
doug.owen@am.jll.com

Yandell Wood, SIOR
+1 502 394 2518
yandell.wood@am.jll.com

Morgan LaCroix
+1 502 394 2507
morgan.lacroix@am.jll.com

