



Innovation Corporate Center

15051 - 15333 Avenue of Science &
15378 - 15445 Innovation Drive, San Diego, CA



Built For What's Next

Innovation Corporate Center is a Class A office and corporate headquarters campus engineered to propel companies into tomorrow. The campus integrates modern design, advanced infrastructure, and flexible floorplates to create a highly collaborative environment.



Eight building campus
totaling ±467,000 RSF



Master-planned
corporate environment



Adjacent to over 1 million SF
of retail and dining



Configured for office, R&D,
Life Science and biotech



The largest high quality
corporate headquarters
campus in Rancho Bernardo



Strategically located immediately
off I-15 (Camino Del Norte and
Carmel Mountain Road exits)



Large floorplates with an
efficient mix of private and
open work areas

Innovation Corporate Center

15333
Avenue of Science

15445
Innovation Drive

15253
Avenue of Science

15435
Innovation Drive

15231
Avenue of Science

15378
Innovation Drive

15073
Avenue of Science

15051
Avenue of Science

Camino Del Norte



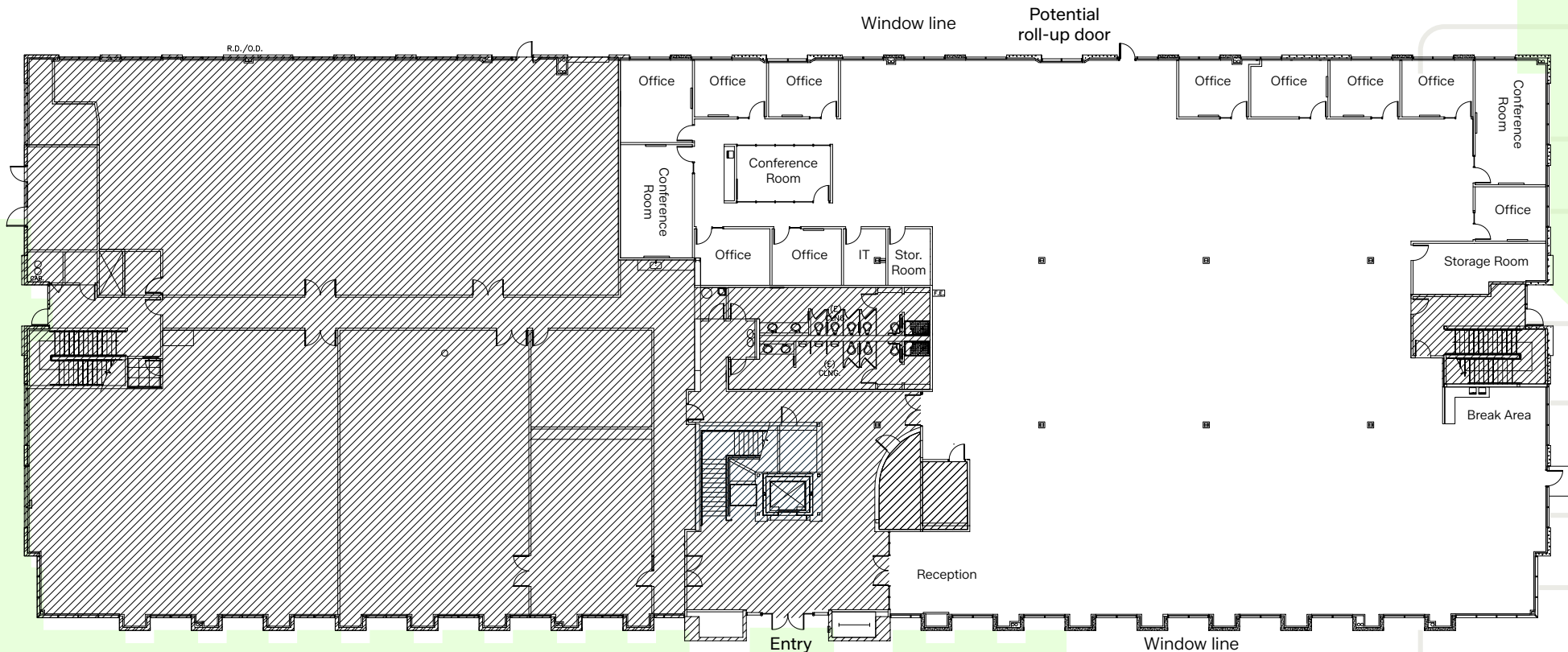
Availability

Building - Suite	RSF	Details
15231 — Suite 150	±18,149	Available now. Prominent double-door entrance directly off lobby with 11 Private offices, Conference room, Storage room, IT room, and Break area. Polished concrete floors with 11' drop ceiling. Ability to add roll-up door to accommodate loading.
15333 — Suite 100	±36,617	Available now. Prominent double-door entrance directly off lobby with 29 private offices, Conference room, Storage room, IT room, and Break area. Partial exposed ceiling with polished concrete and remainder of the space is 11' drop ceilings. Potential to add loading.
15333 — Suite 250	±8,441	Available now. 4 Private offices, 2 Meeting rooms, IT room, Break area, and open cube space. 11' ceilings, double-door glass entrance and ample natural light.
15435 — Suite 100	±25,177	Reception, 30 Offices, 2 Break areas, 4 Conference rooms, IT room, IT lab, Electric room, File room, 3 Phone booths, Copy room, Storage and Open area. Divisible down to 7,105 rsf.
15435 — Suite 200	±11,130	Reception, 12 Offices, Break area, IT/Storage and Open area for ±30-40 Cubicles.
15435 — Suite 201	±3,300	Coming Available. 8 Offices, Huddle room.
15435 — Suite 202	±3,715	Coming Available. 4 Offices, 2 Huddle rooms, Break/Copy room.
15445 — Suite 100	±25,600	Coming Available. Reception, 9 Offices, Conference room, Large training room, 7 Huddle rooms, 2 Phone rooms, Kitchen/cafeteria, 3 Storage rooms, IT/IT storage, Copy center.
15445 — Suite 200	±25,600	Coming Available. 3 Offices, 2 Conference rooms, 4 Huddle rooms, Break area, Production room, Storage room.

15231 Avenue of Science

Suite 150 | 18,149 RSF

- 10 private offices
- 3 conference rooms
- 2 storage rooms
- IT room
- Break area
- Prominent double-door entrance directly off lobby
- Polished concrete floors with 11' drop ceiling
- Ability to add roll-up door to accommodate loading



15231 Avenue of Science

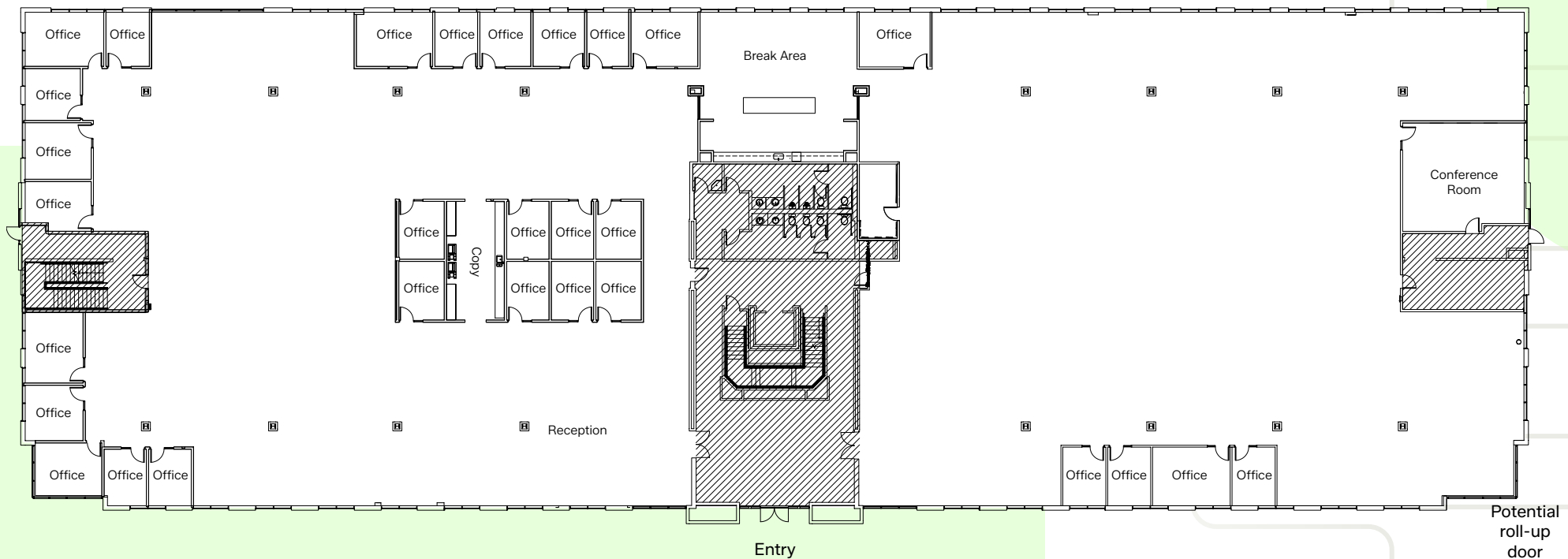
Suite 150 | 18,149 RSF



15333 Avenue of Science

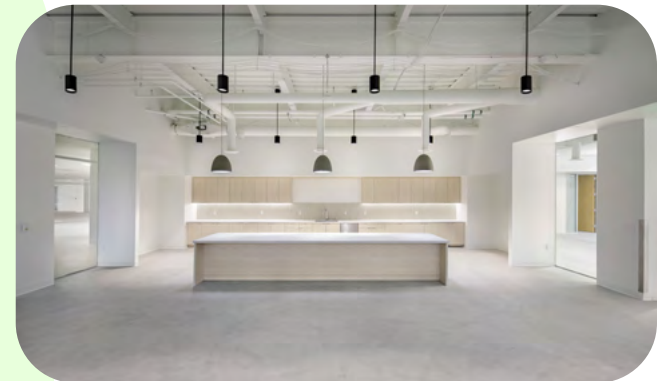
Suite 100 | 36,617 RSF

- 29 private offices
- Conference room
- Storage room
- IT room
- Break area
- Prominent double-door entrance directly off lobby
- Partial exposed ceiling with polished concrete and remainder of the space is 11' drop ceilings
- Potential to add load loading



15333 Avenue of Science

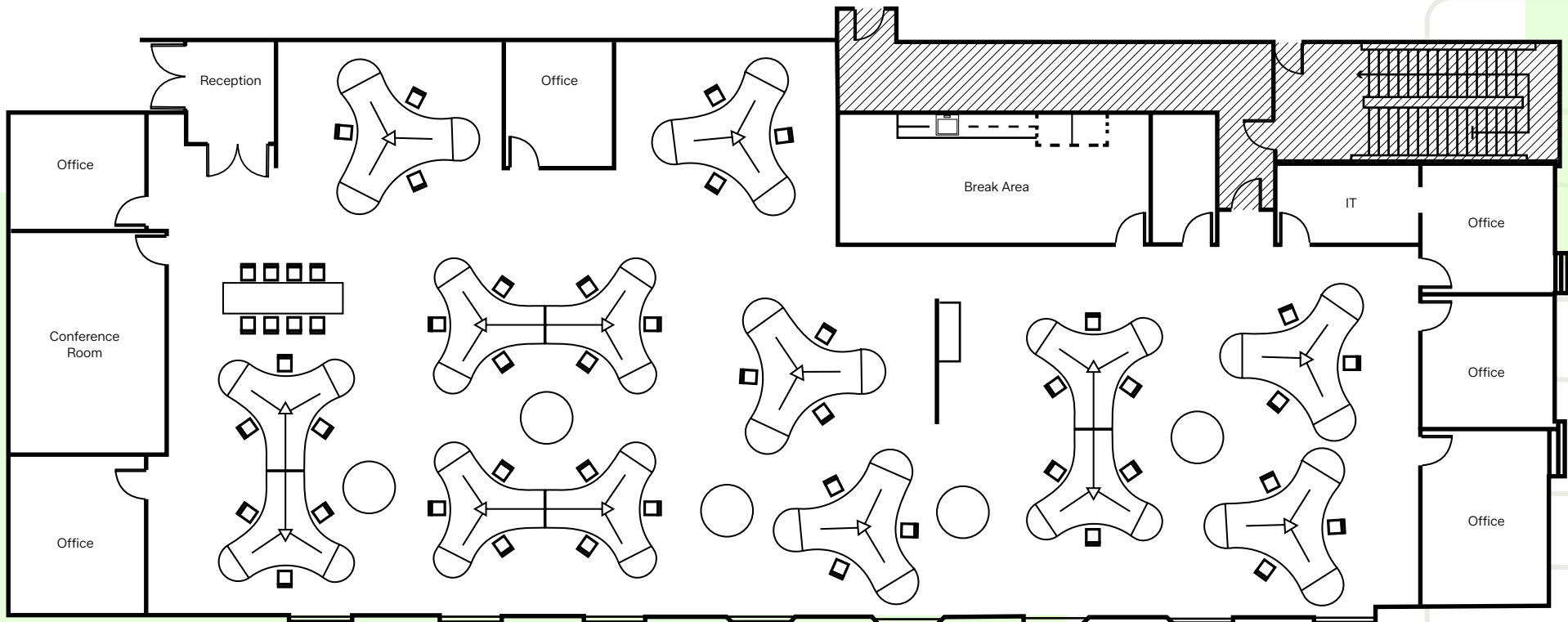
Suite 100 | 36,617 RSF



15333 Avenue of Science

Suite 250 | 8,441 RSF

- 6 private offices
- 2 conference rooms
- IT room
- Break area
- Open office area
- 11' ceilings
- Double-door glass entrance and ample natural light



15333 Avenue of Science

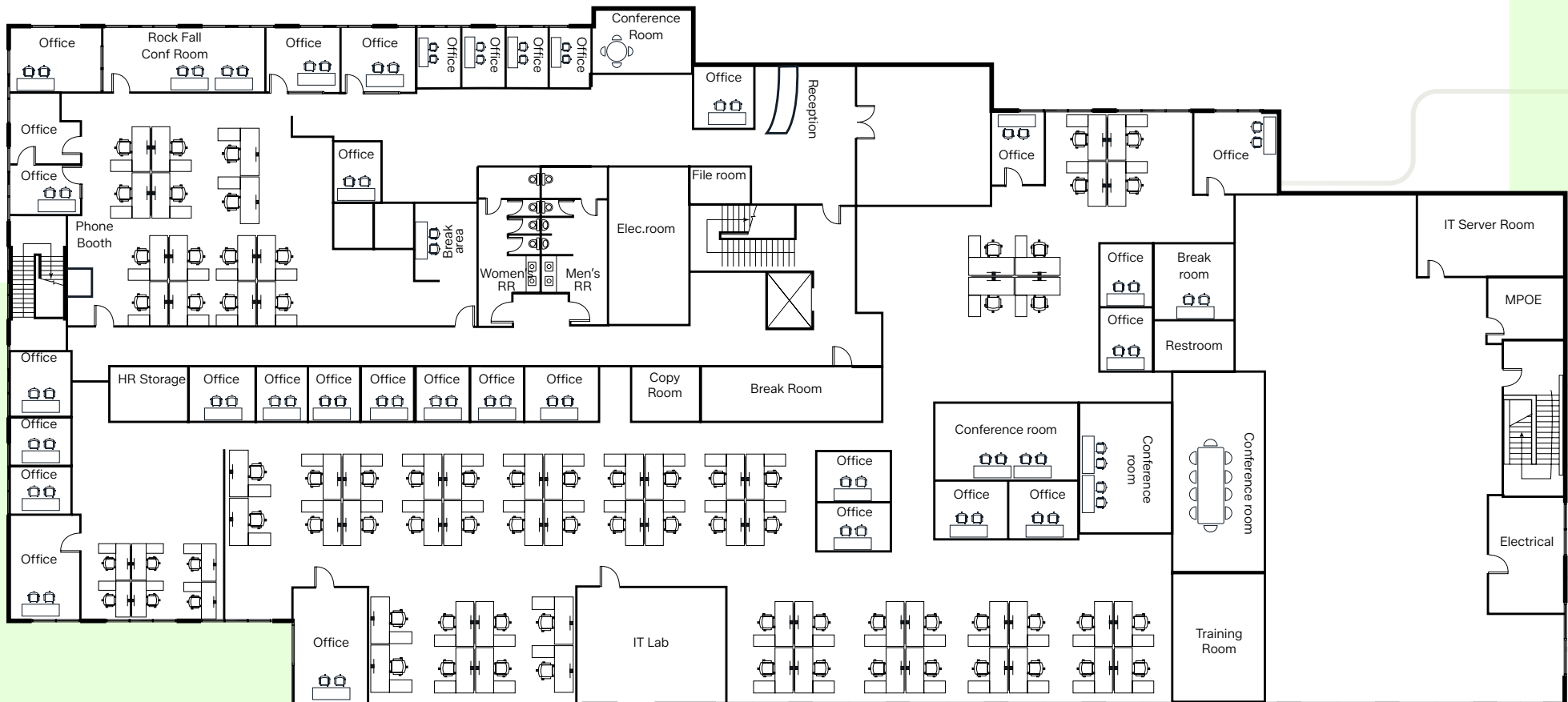
Suite 250 | 8,441 RSF



15435 Innovation Drive

Suite 100 | 25,177 RSF

- 30 offices
- 2 break areas
- 4 conference rooms
- 3 phonebooths
- Reception
- IT room & IT lab
- Electric room
- File room
- Copy room
- Storage
- Open area
- Divisible down to 7,105 RSF



15435 Innovation Drive

Suite 200 | 11,130 RSF

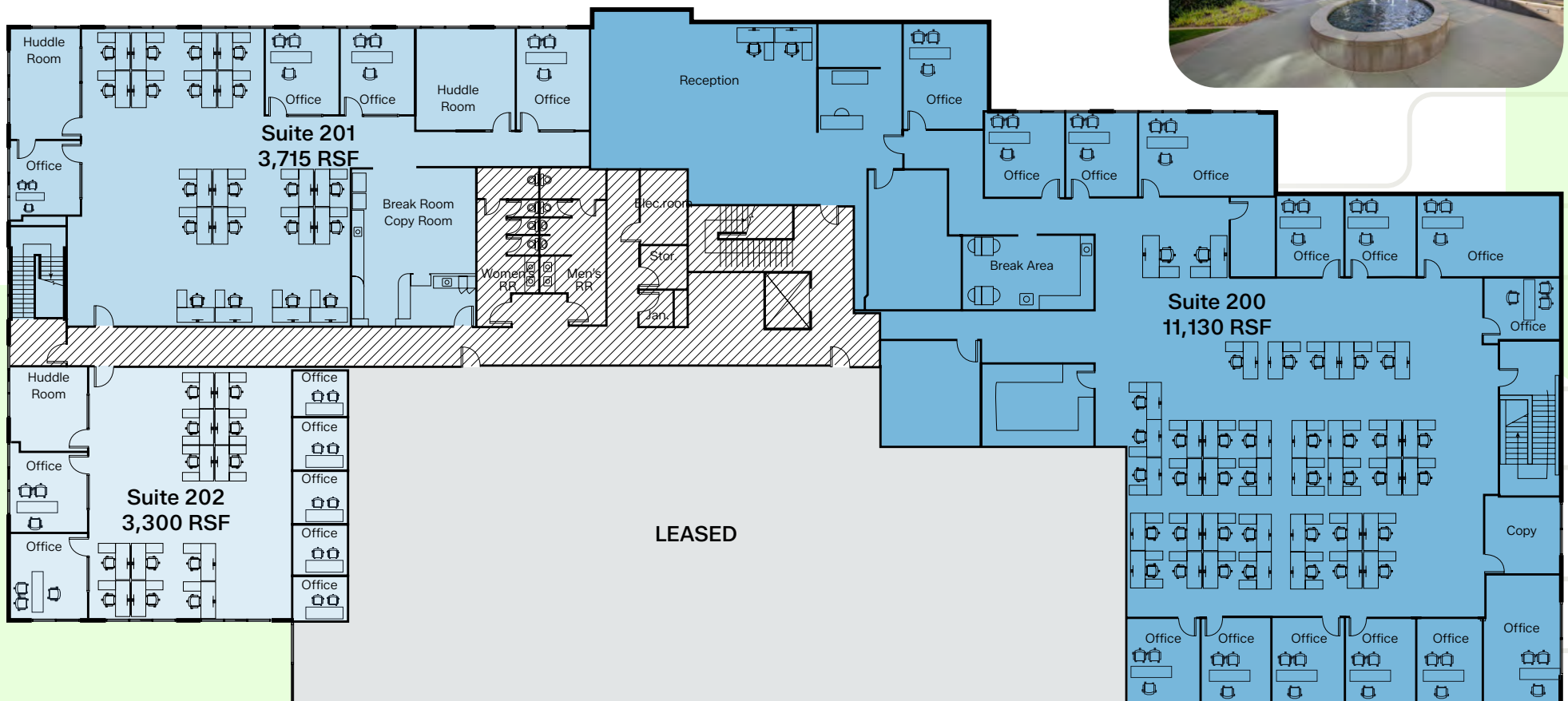
- 14 offices
- Reception
- Break area
- IT/Storage
- Open area for ±30-40 cubicles

Suite 201 | 3,300 RSF

- 4 offices
- 2 huddle rooms
- Break area / copy room

Suite 202 | 3,715 RSF

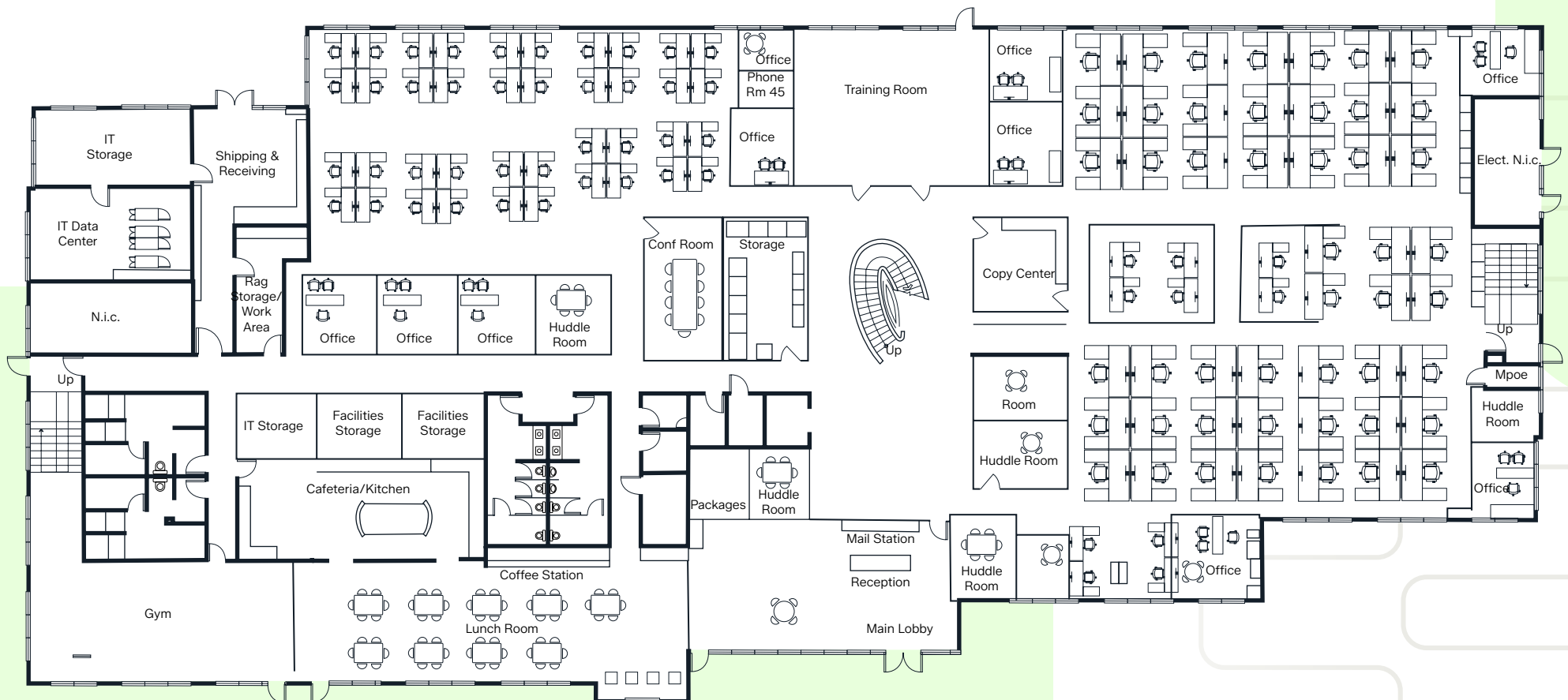
- 7 offices
- Huddle room



15445 Innovation Drive

Suite 100 | 25,600 RSF

- 9 offices
- Conference room
- Large training room
- 7 huddle rooms
- 2 phone rooms
- Reception
- 3 storage rooms
- Kitchen/cafeteria
- IT/IT storage
- Copy center



15445 Innovation Drive

Suite 200 | 25,600 RSF

- 34 offices
- 2 conference rooms
- 4 huddle rooms
- Board room
- Break area
- Production room
- Storage room



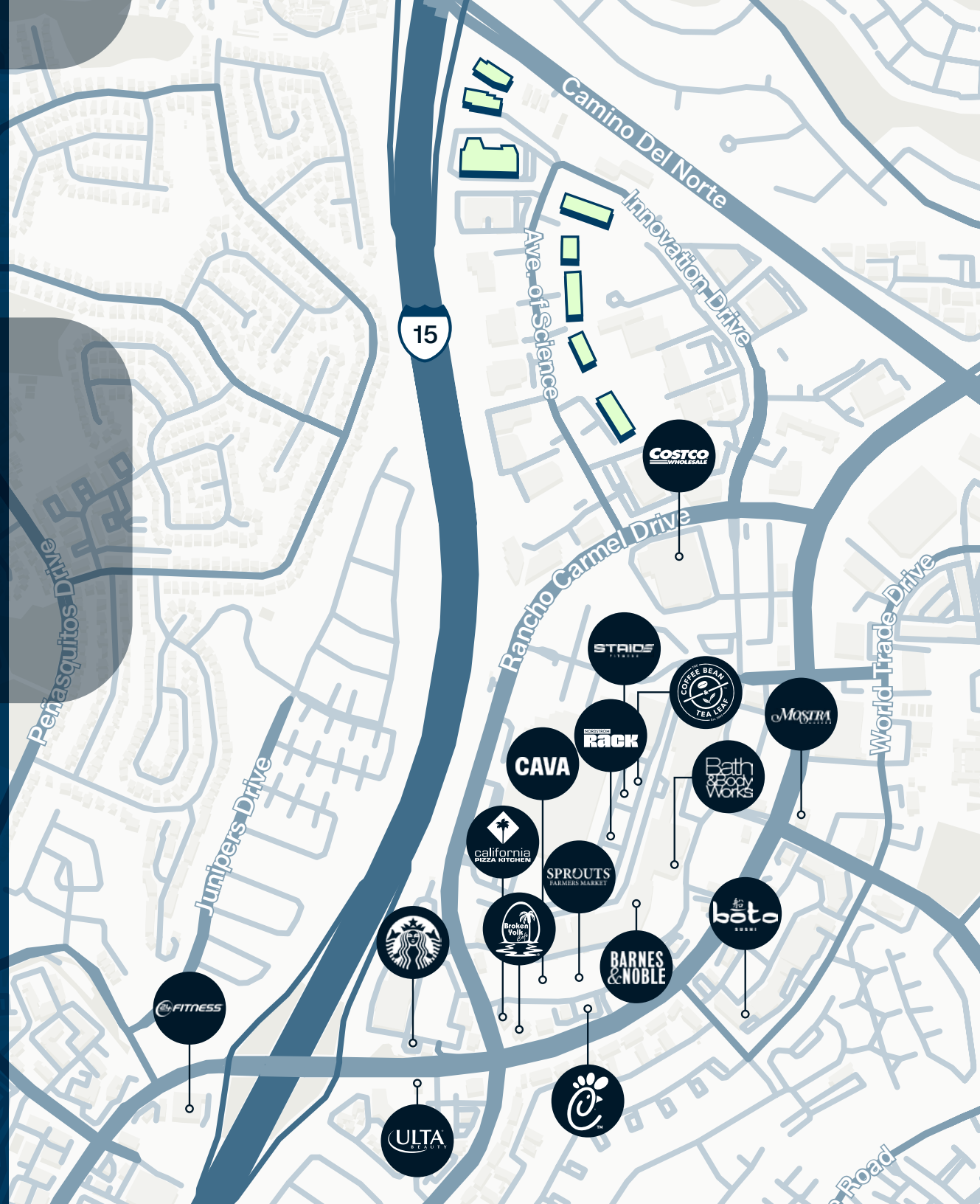
Area Amenities

Additional Restaurants

- Best Pizza & Brew
- Café Luna
- California Fish Grill
- Chick-fil-A
- Chipotle
- Delhi Kitchen
- El Pollo Loco
- Epic Wings
- Greek Corner Café
- In-N-Out
- Islands Restaurant
- L&L Hawaiian Barbeque
- Olive Garden
- Panera Bread
- Sushi Gato
- The Kebab Shop
- The Stand
- Urban Thai Kitchen
- Which Which
- Yesenia's Mexican Food

Additional Services/Retail

- 24 Hour Fitness
- Bank of Americas
- Chase Bank
- F45 Training
- Home Depot
- Marshalls
- Petco
- Ralphs
- Sephora
- Target
- Trader Joes
- USPS
- Valvoline
- Wells Fargo





Innovation Corporate Center

Tim Olson

+1 858 410 1253

tim.olson@jll.com

RE license #01364117

Greg Moore

+1 858 410 6367

greg.moore@jll.com

RE license #02068852

Carly Ross

+1 858 352 2911

carly.ross@jll.com

RE license #02157346

Although information has been obtained from sources deemed reliable, neither Owner nor JLL makes any guarantees, warranties or representations, express or implied, as to the completeness or accuracy as to the information contained herein. Any projections, opinions, assumptions or estimates used are for example only. There may be differences between projected and actual results, and those differences may be material. The Property may be withdrawn without notice. Neither Owner nor JLL accepts any liability for any loss or damage suffered by any party resulting from reliance on this information. If the recipient of this information has signed a confidentiality agreement regarding this matter, this information is subject to the terms of that agreement. ©2026. Jones Lang LaSalle IP, Inc. All rights reserved.

