

±336 ACRES OF LAND FOR SALE - HOKE COUNTY

Balfour Road & McNeill Lake Rd

Lumber Bridge, NC 28357



for more information

KEVIN CARROLL

Broker

O: 910.829.1617

C: 910.990.3974

kevin.c@grantmurrayre.com



Grant - Murray
REAL ESTATE, LLC

COMMERCIAL AND INVESTMENT BROKERAGE

150 N. McPherson Church Rd | Fayetteville, NC 28303 | www.grantmurrayre.com



PROPERTY OVERVIEW

| | |
|----------------------|-------------------------|
| Sale Price: | Subject to Offer |
| Lot Size: | ±336 Acres |
| Price / Acre: | TBD |
| Zoning: | RA-20 |

Property Description

Discover a truly unique ±336-acre legacy property comprised of 12 contiguous parcels in the scenic Lumber Bridge area of Hoke County, North Carolina. The property features approximately ±97 acres of upland soils suitable for large-lot residential development, private estates, agricultural use, or long-term investment, complemented by approximately 238± acres of wetlands and open water. At the heart of the property is a remarkable 76±-acre lake that forms part of the historic Big Marsh Swamp, creating an exceptional landscape of water, timber, wildlife habitat, and natural beauty. Juniper Branch and McNeills Mill Creek both traverse the property and feed Big Marsh Swamp, enhancing the tract's recreational appeal and ecological diversity. Established horse trails, excellent fishing, productive waterfowl habitat, duck hunting opportunities, and significant timber value combine to create a property that offers both immediate enjoyment and lasting investment potential.

**“Where tradition meets thoughtful
land stewardship.”**

±336 Acres Balfour & McNeill Lake Rd
LUMBER BRIDGE, NC 28357

PROPERTY DETAILS & HIGHLIGHTS

| | |
|----------|--------------------------------------|
| Location | ±336 Acres Balfour & McNeill Lake Rd |
| City | Lumber Bridge |
| County | Hoke |
| Lot Size | ±336 Acres |

Discover a truly unique 336±-acre legacy property made up of 12 contiguous parcels in the scenic Lumber Bridge area of Hoke County, North Carolina. The tract includes approximately 97± acres of upland soils ideal for large-lot residential development, private estates, agricultural use, or long-term investment, paired with roughly 238± acres of wetlands and open water. At its center lies a remarkable 76±-acre lake forming part of the historic Big Marsh Swamp, creating an exceptional landscape of water, timber, wildlife habitat, and natural beauty. Juniper Branch and McNeills Mill Creek traverse the property and feed Big Marsh Swamp, enhancing its recreational appeal and ecological diversity. Established horse trails, excellent fishing, productive waterfowl habitat, duck hunting opportunities, and meaningful timber value offer both immediate enjoyment and lasting investment potential. Conveniently located within easy reach of Fayetteville, Southern Pines, and Fort Bragg, the property delivers a rare combination of privacy, accessibility, and scale. Whether envisioned as a sporting retreat, family compound, conservation holding, or future development opportunity, this exceptional tract presents a rare chance to own one of the region's most distinctive and versatile land assets.



- ±336 acres, continuous parcels
- ±76-acre lake, picturesque, rare, natural beauty
- Big Marsh Swamp, Juniper Branch and McNeills Mill Creek
- ±97 acres sandy suitable uplands soils
- RA-20 Zoning, county water along Balfour Rd
- State Maintained Balfour and McNeill Lake Roads
- Hunting, Fishing, Waterfowl, Horse Trails, ATV Trails
- Significant timber value with thoughtful development potential

for more information

KEVIN CARROLL

Broker

O: 910.829.1617

C: 910.990.3974

kevin.c@grantmurrayre.com



Grant - Murray
REAL ESTATE, LLC

COMMERCIAL AND INVESTMENT BROKERAGE

±336 Acres Balfour & McNeill Lake Rd
LUMBER BRIDGE, NC 28357

ADDITIONAL PHOTOS



for more information

KEVIN CARROLL

Broker

O: 910.829.1617

C: 910.990.3974

kevin.c@grantmurrayre.com

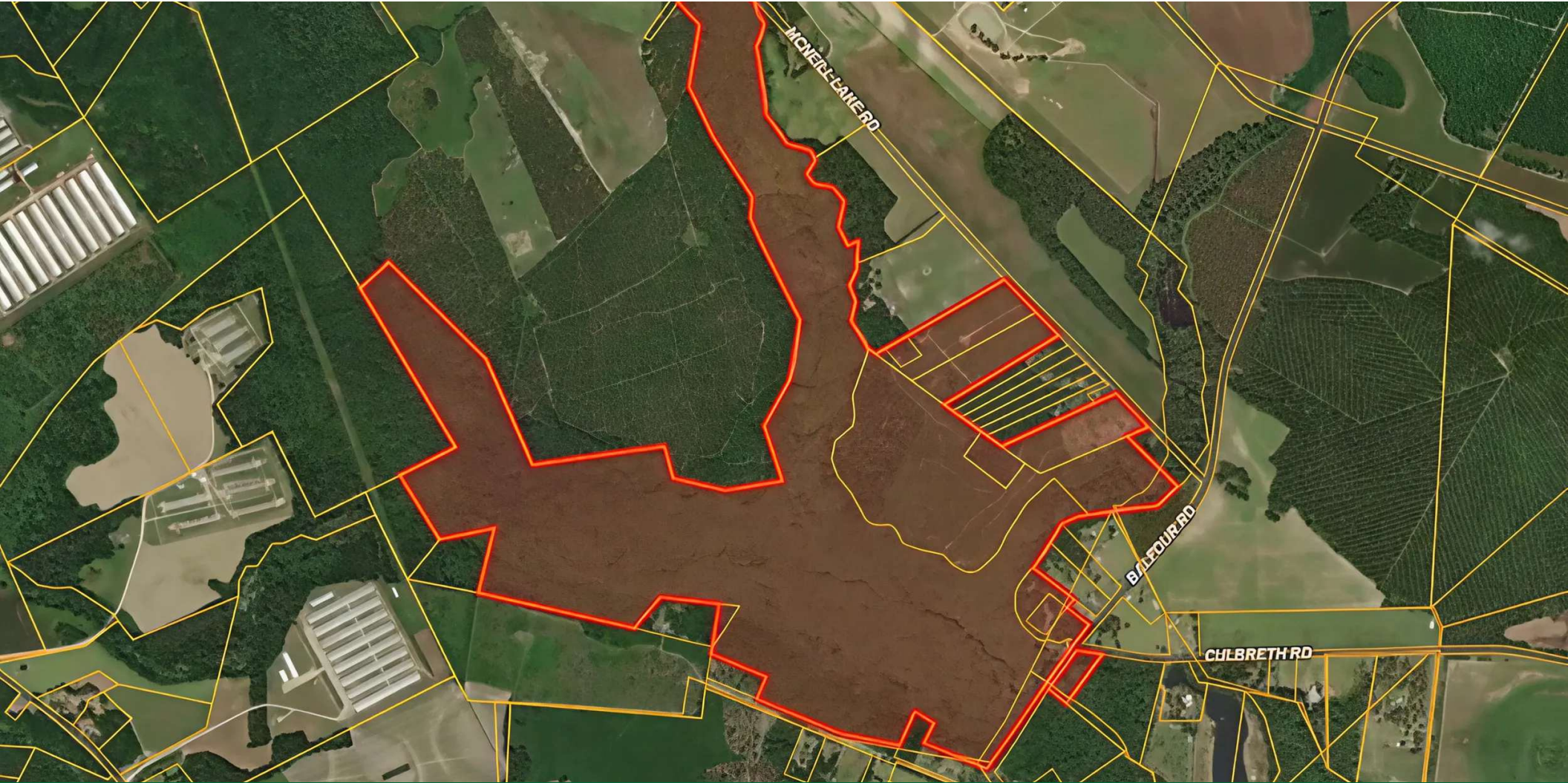


Grant - Murray
REAL ESTATE, LLC
COMMERCIAL AND INVESTMENT BROKERAGE

150 N. McPherson Church Rd | Fayetteville, NC 28303 | www.grantmurrayre.com

±336 Acres Balfour & McNeill Lake Rd
LUMBER BRIDGE, NC 28357

ADDITIONAL PHOTOS



for more information

KEVIN CARROLL

Broker

O: 910.829.1617

C: 910.990.3974

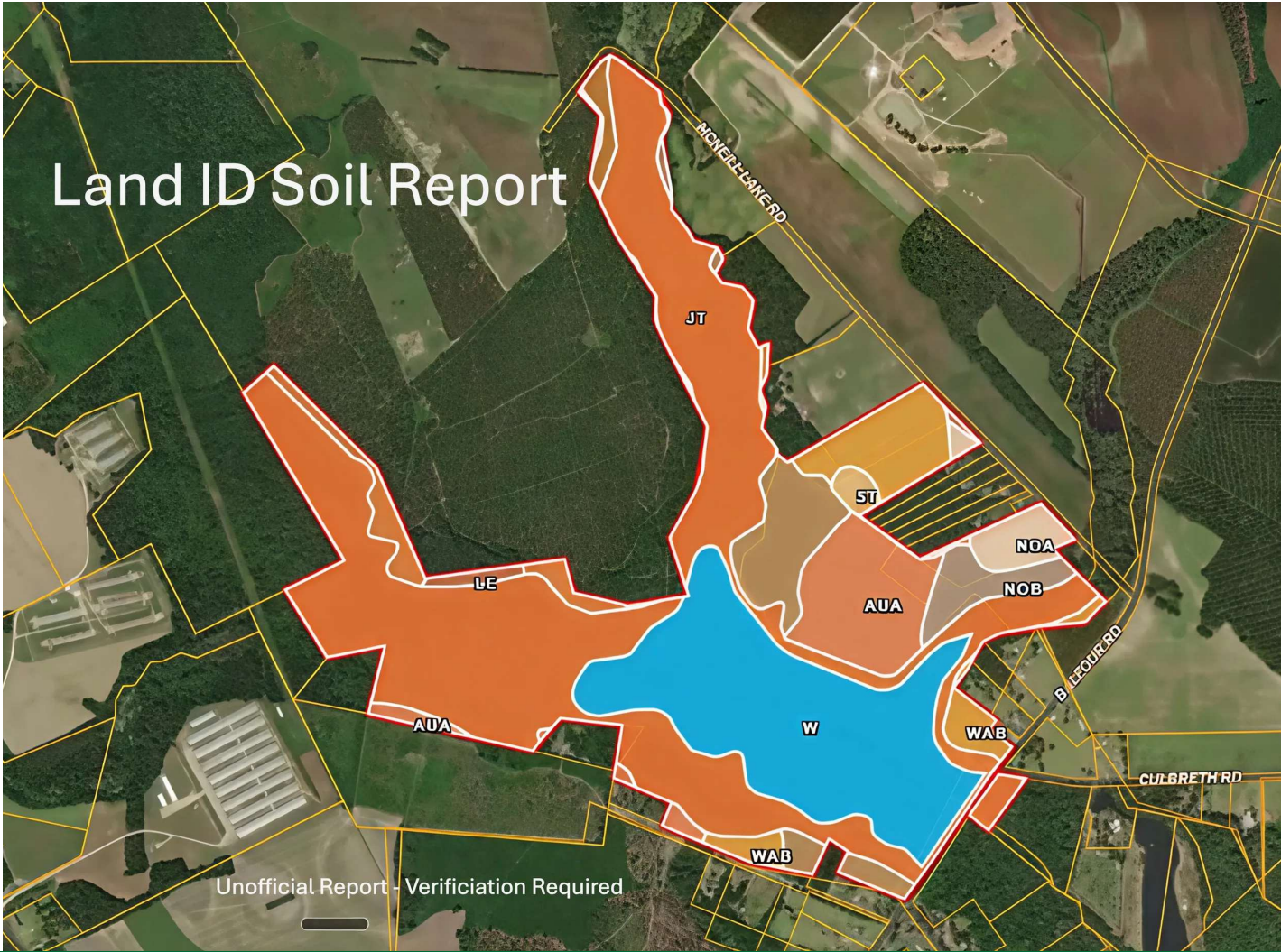
kevin.c@grantmurrayre.com



Grant - Murray
REAL ESTATE, LLC
COMMERCIAL AND INVESTMENT BROKERAGE

±336 Acres Balfour & McNeill Lake Rd
LUMBER BRIDGE, NC 28357

ADDITIONAL PHOTOS



Land ID Soil Report

Unofficial Report - Verification Required

for more information

KEVIN CARROLL
Broker
O: 910.829.1617
C: 910.990.3974
kevin.c@grantmurrayre.com



±336 Acres Balfour & McNeill Lake Rd
LUMBER BRIDGE, NC 28357

RETAILER MAP



for more information

KEVIN CARROLL
Broker
O: 910.829.1617
C: 910.990.3974
kevin.c@grantmurrayre.com



Grant - Murray
REAL ESTATE, LLC
COMMERCIAL AND INVESTMENT BROKERAGE