

LEASE RATE: \$1.15 PSF NNN








PROPERTY INFORMATION

- ✓ 9,000-12,000 SF Available
- ✓ Year Built: 1998
- ✓ Zoned: M-1 (Light Industrial)
- ✓ Ample Parking: 45 Surface Stalls
- ✓ Includes A 3-Ton Over-Head Bridge Crane
- ✓ Four (4) 8'x12' Roll-Up Doors
- ✓ Heavy Power: 400A/3-Phase*
- ✓ 16' Clear Height
- ✓ Adjacent to Jordan Landing

- ✓ Convenient Access To Bangerter Highway & Mountain View Corridor

TRAVEL TIMES

	BANGERTE HIGHWAY	3 MINS
	MOUNTAIN VIEW CORRIDOR	6 MINS
	DOWNTOWN SALT LAKE	20 MINS
	POINT OF THE MOUNTAIN	20 MINS
	SLC INTN'L AIRPORT	16 MINS

CONTACT US

KELLEN KONCAR

✉ kellen@cresutah.com

☎ 801.824.1311

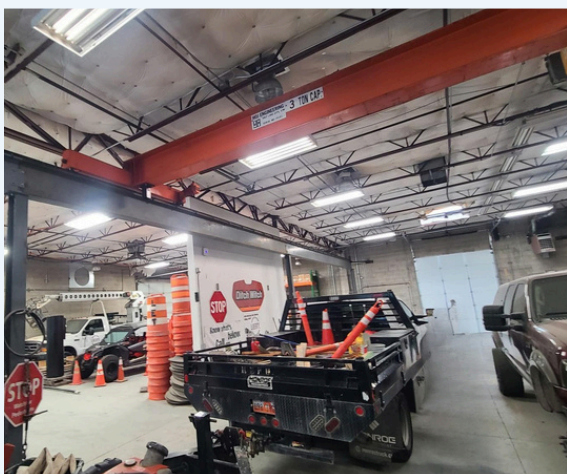
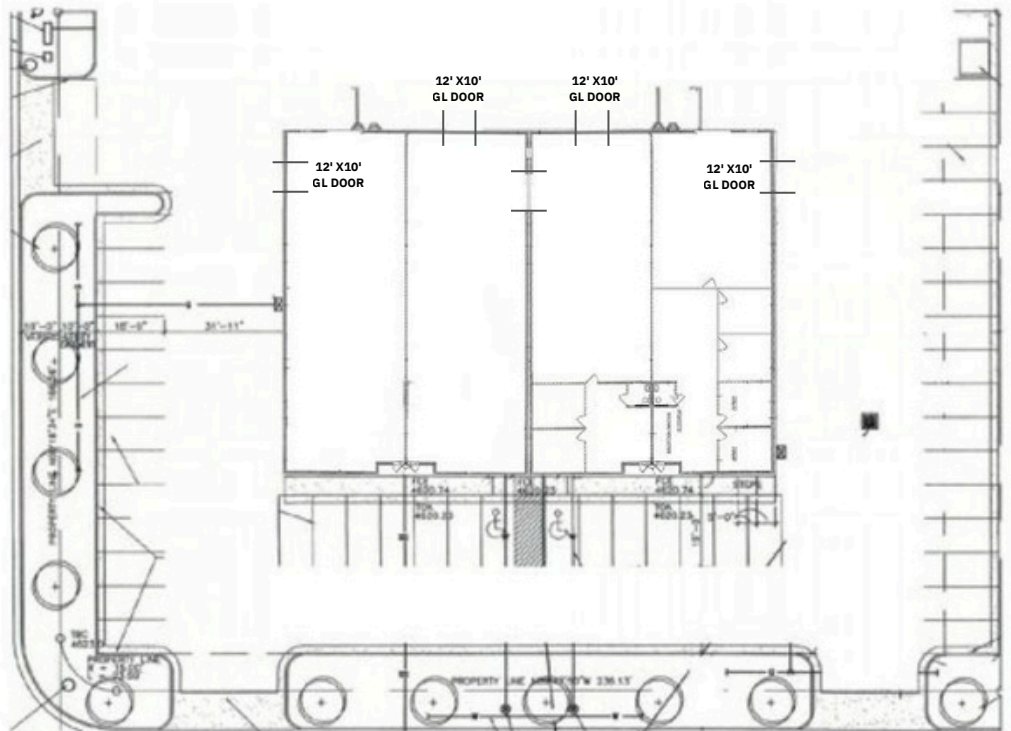
DEREK KLOPFER

✉ derek@cresutah.com

☎ 801.897.9264 www.cresutah.com

Call Us
801.876.6070





CONTACT US

KELLEN KONCAR

✉ kellen@cresutah.com ☎ 801.824.1311

DEREK KLOPFER

✉ derek@cresutah.com ☎ 801.897.9264 🌐 www.cresutah.com

Call Us

801.876.6070

