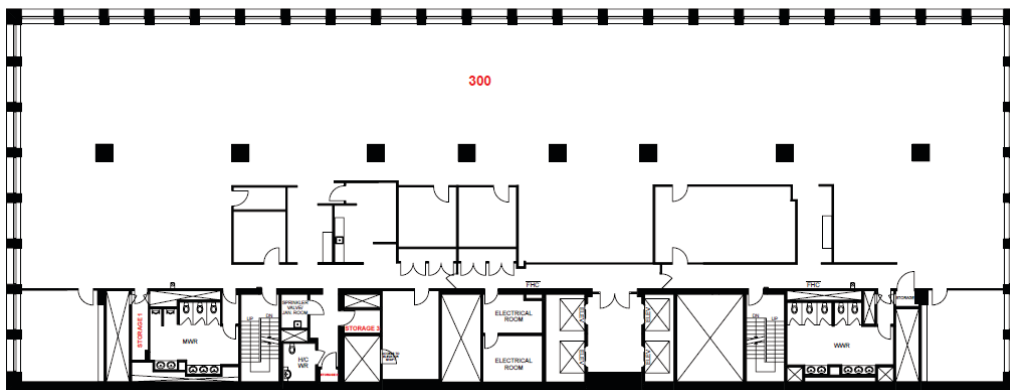


Updated: 2025

# Suite Features

21 Melinda Street  
—  
Commerce Court



**Suite**  
300

**Rentable Area**  
13,661 SF

**Availability:** Immediately

**Operating costs:**  
\$23.45 per SF

**Realty taxes:**  
\$11.84 per SF

**Total additional rent:**  
\$36.29 per SF

**Key features:**

- Contiguous block of 122,000 SF over 9 floors
- Built out space
- Efficient floor plates with minimal columns
- Large windows with ample natural light

**Kate LaBrash**  
Director, Office Leasing  
Sales Representative  
QuadReal Property Group, Brokerage

T 416-673-7491  
E [kate.labrash@quadreal.com](mailto:kate.labrash@quadreal.com)  
W [www.quadreal.com](http://www.quadreal.com)

