



Available For Lease

**4522 Wetzel Rd,
Liverpool, NY 13090**



Property Summary

4522 Wetzel Rd, Liverpool, NY 13090 offers 12,163 SF of industrial space across three metal buildings on a 4.50-acre site. The property includes a 4,820 SF building, 4,103 SF building with diesel bay, and a 3,240 SF building, providing flexible configurations for a variety of industrial users. With 8 drive-in doors and clear heights ranging from 16'–18', the site is well-suited for equipment storage, contractor use, or light industrial operations. The layout and yard space allow for efficient circulation and outdoor storage in a strong Liverpool/Syracuse location.



PROPERTY SPECS

Address: 4522 Wetzel Rd, Liverpool, NY 13090

Total Available Space: Total is 12,163 SF

- Metal Building 1: 4,820 SF
- Metal Building 2: 4,103 SF
- Metal Building 3: 3,240 SF

Lot Size: 4.50

Drive Ins: 8

Clear Height: 16'-18'

Year Built: 1985

Zoning: Industrial



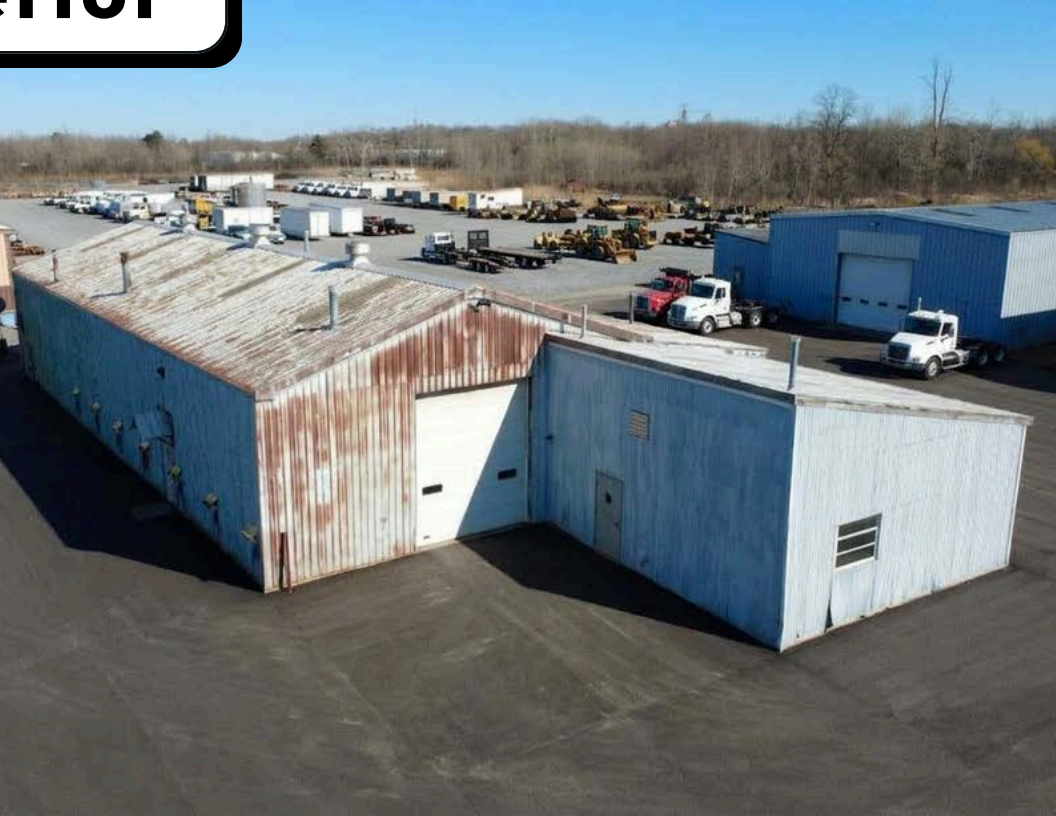
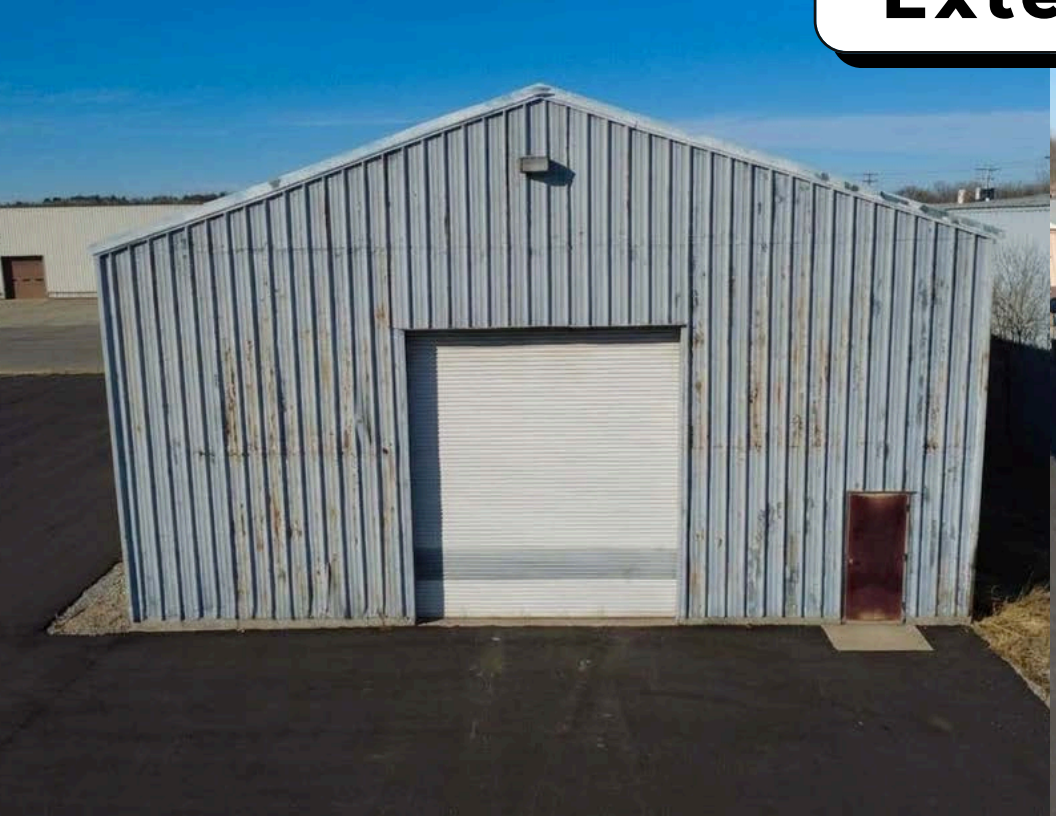
Building 1
SF: 4,820
Drive Ins: 4

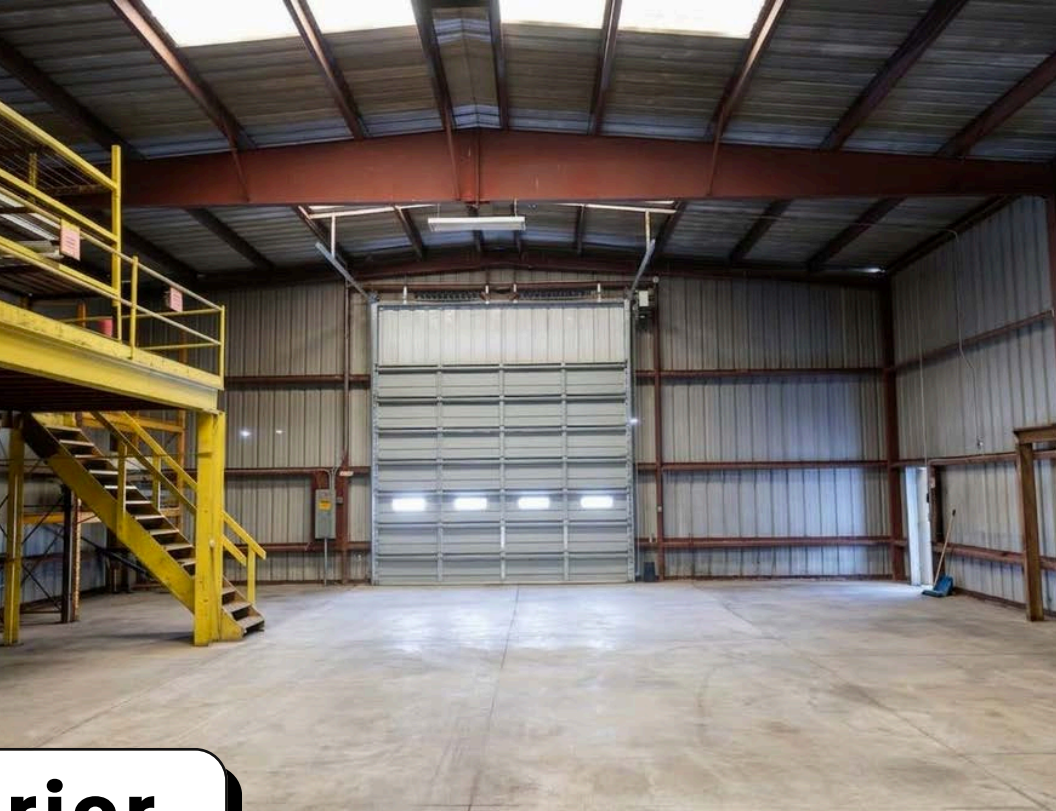
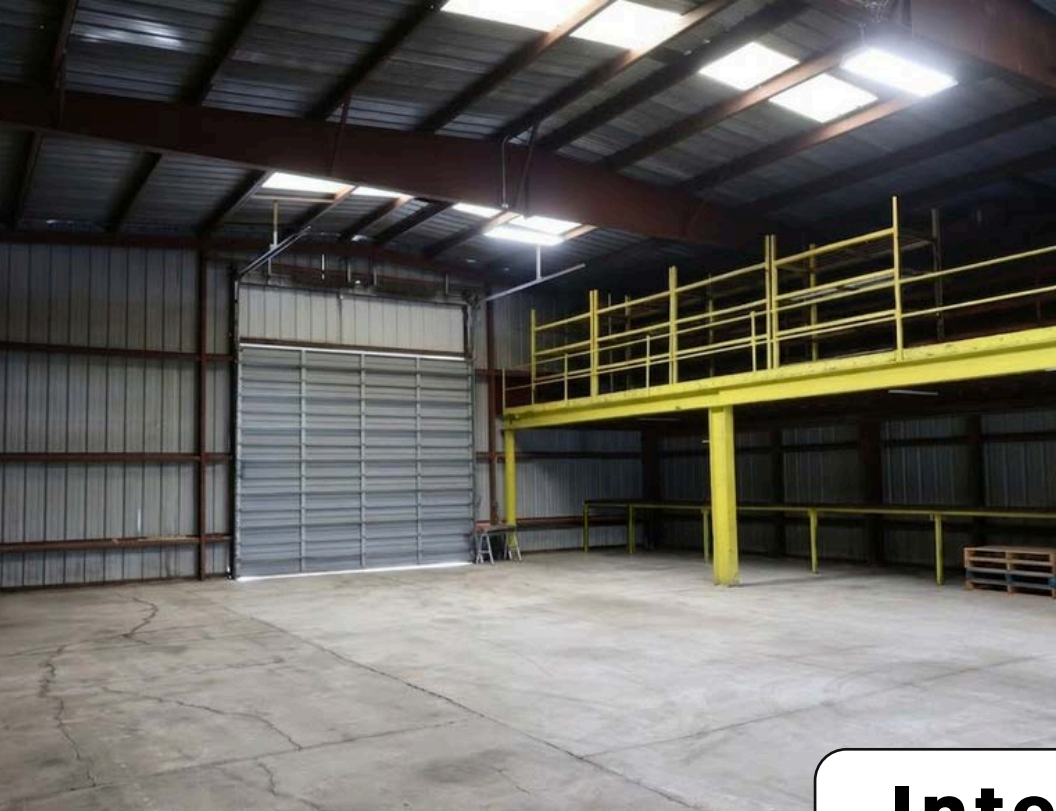
Building 3
SF: 3,240
Drive Ins: 2

**Building 2
+
Diesel Bay**
SF: 4,103
Drive Ins: 2

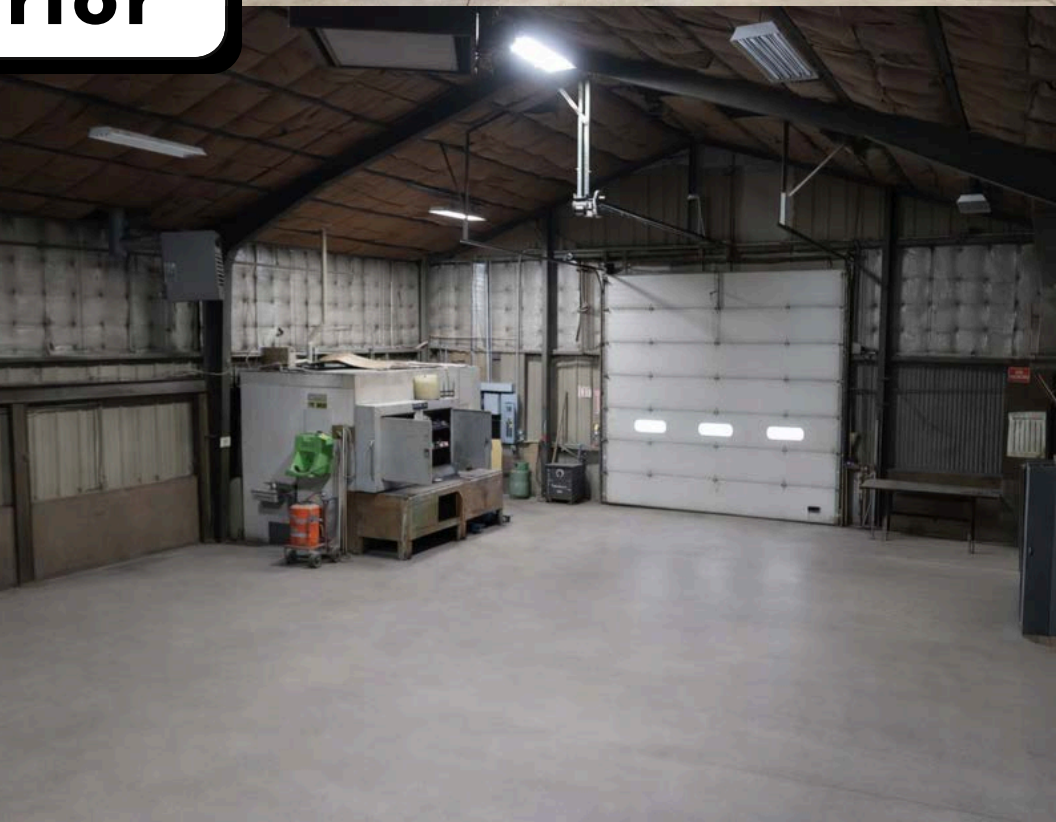
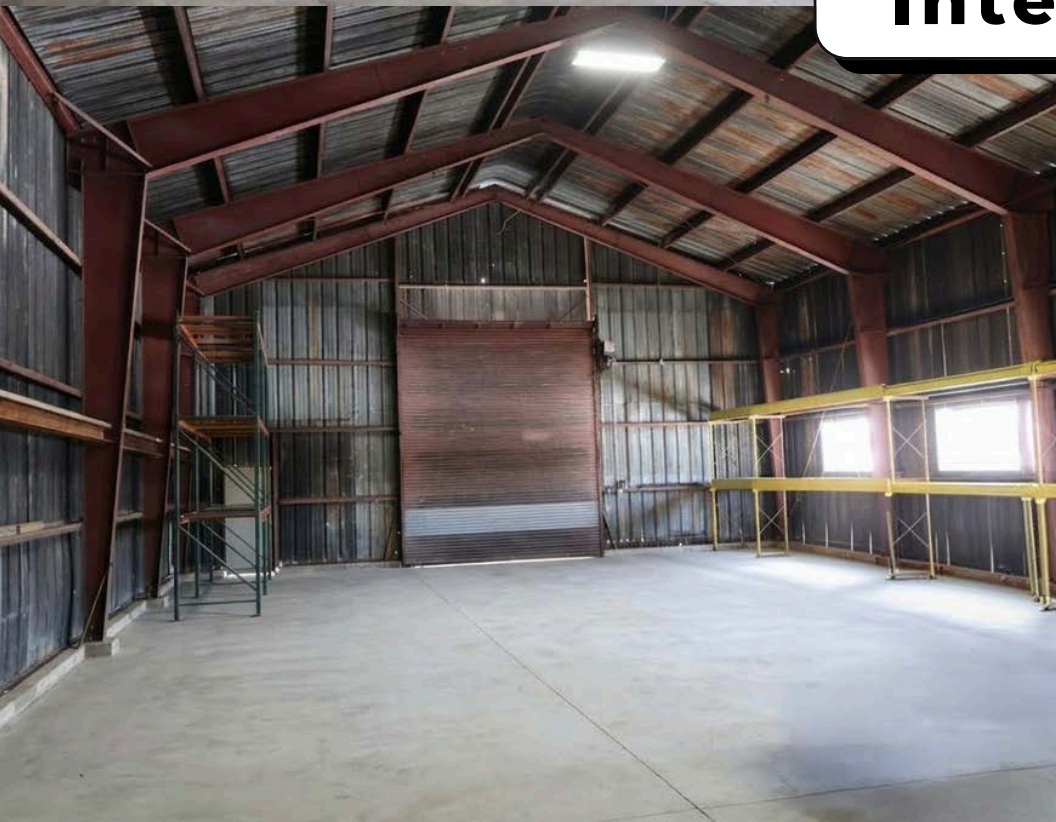


Exterior

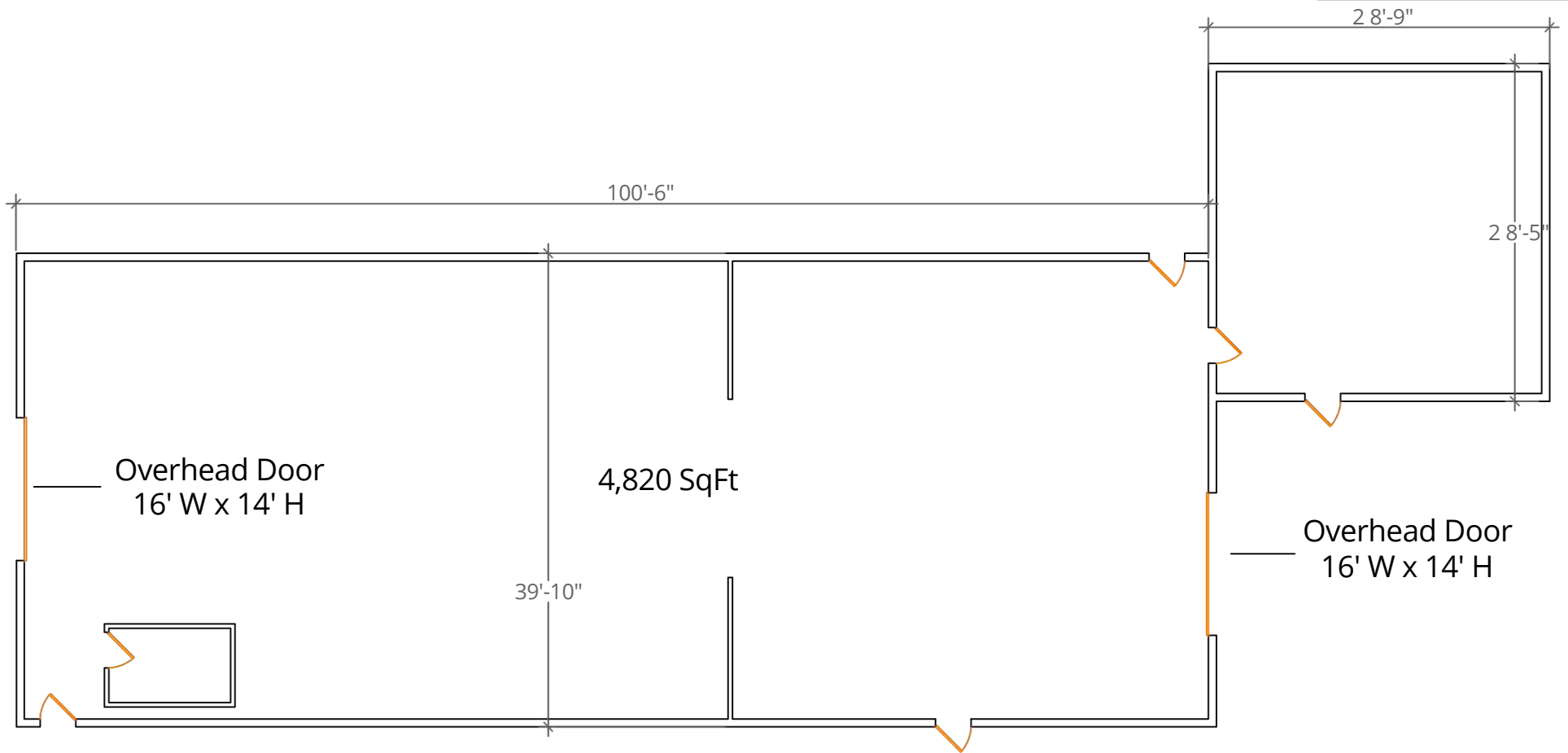
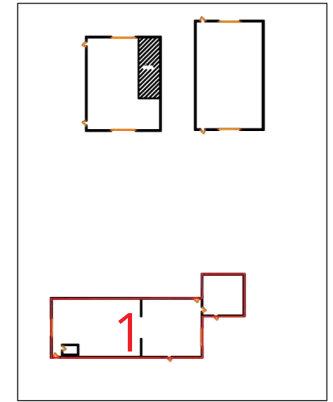




Interior

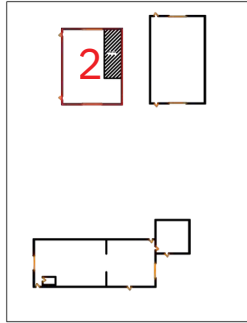


4522 Wetzel Rd.
Building 1

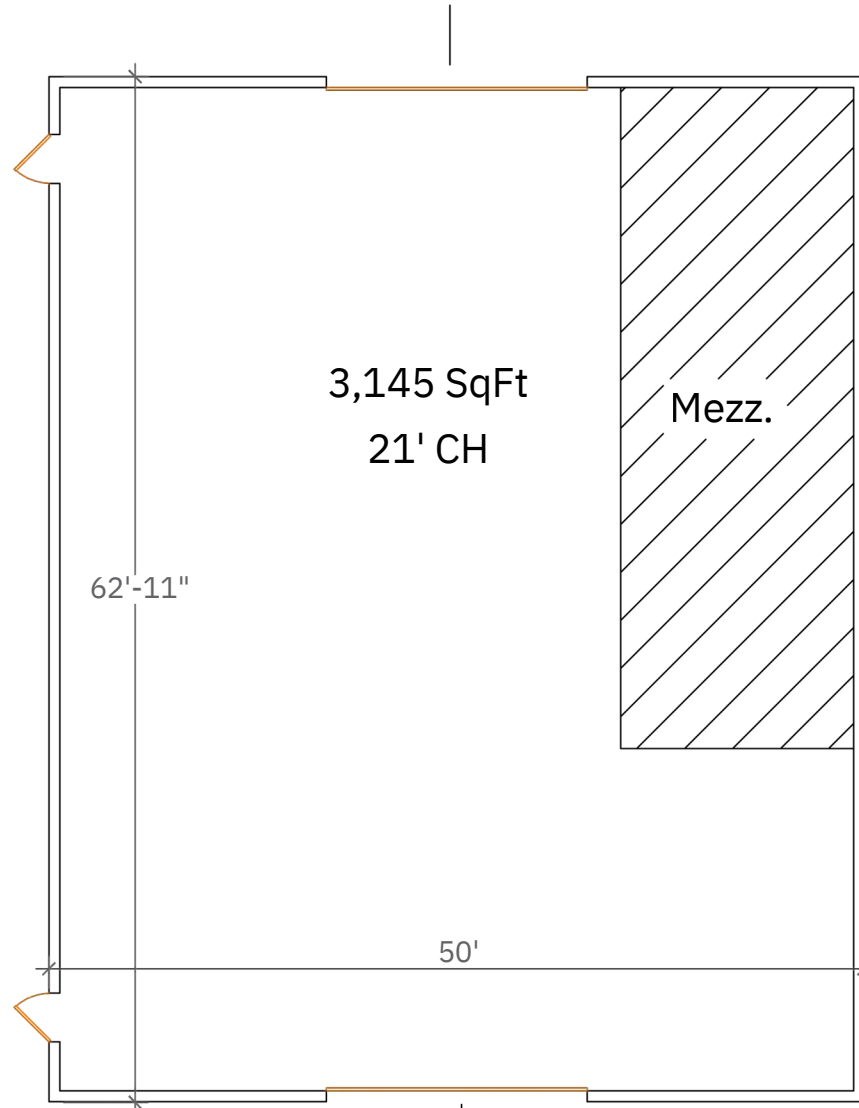


4522 Wetzel Rd.

Building 2

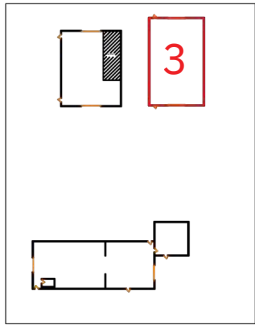


Overhead Door
16' W x 14' H

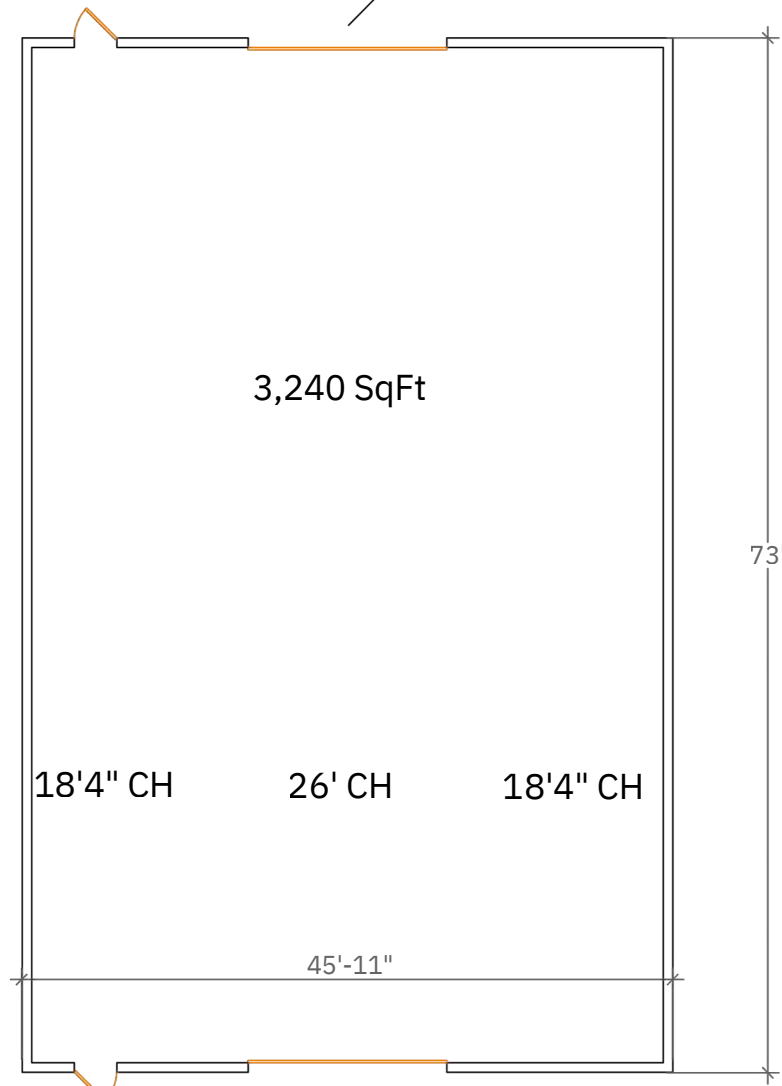


Overhead Door
16' W x 14' H

4522 Wetzel Rd.
Building 3



Overhead Door
14' W x 16' H



3,240 SqFt

73'

18'4" CH

26' CH

18'4" CH

45'-11"

Overhead Door
14' W x 16'6" H

Prime Industrial Location - Syracuse, NY

4522 Wetzel Road sits within a prime Liverpool industrial/service corridor offering direct connectivity to the region's major transportation arteries and high-growth economic drivers. The property is minutes from I-481, I-81, and I-90 (NYS Thruway), providing efficient access to the Syracuse metro, Northside logistics hub, and key commercial districts. The site also benefits from close proximity to Syracuse Hancock International Airport, as well as the rapidly developing Micron mega-site in Clay and the Amazon SYR2 Distribution Center, making this location strategically positioned for logistics, service operations, and workforce accessibility.

Distances

Syracuse Hancock Airport - 7.2 Miles

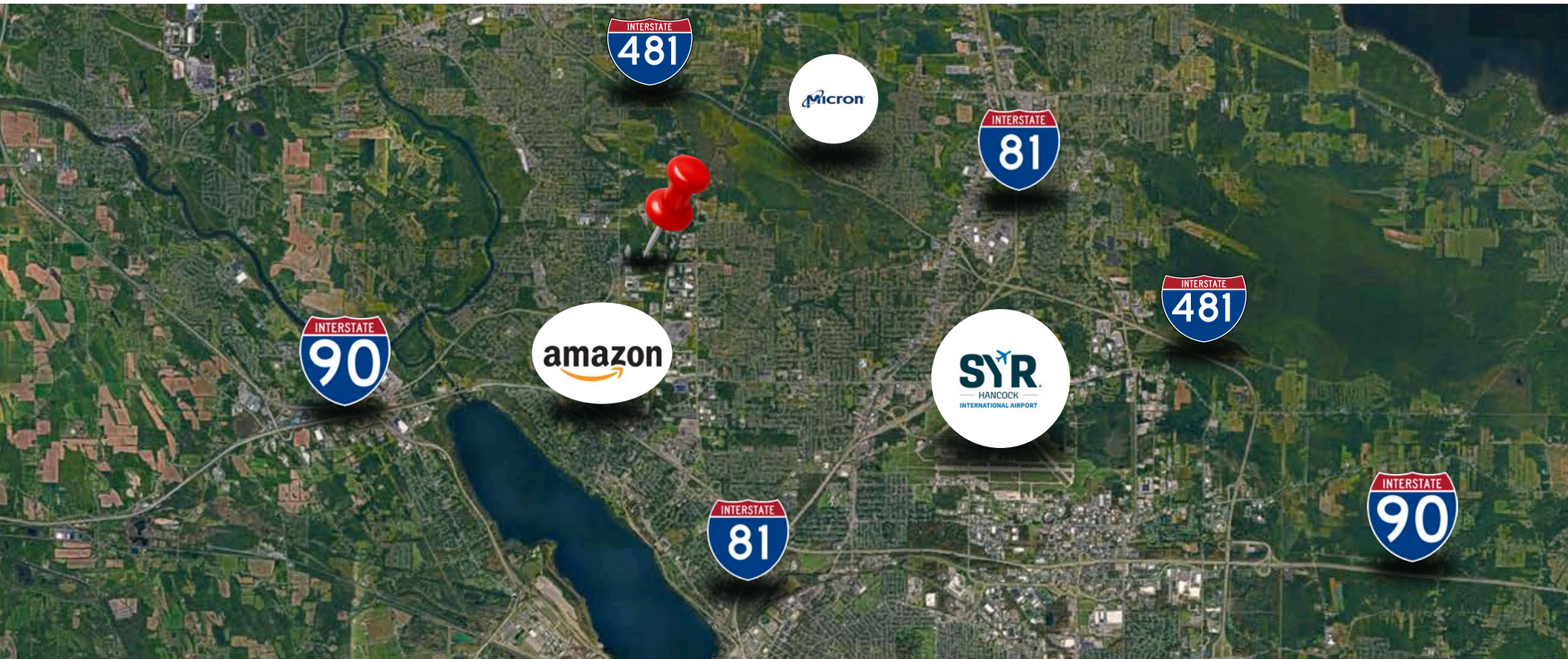
Interstate 81 - 8.0 Miles

Micron Plant - 6 Miles

Interstate 481 - 3.3 Miles

Amazon Center - 5.4 Miles

Interstate 90 - 4.7 Miles



Jonathan LaSala



Senior Vice President of Brokerage



315-882-7531



Jlasala@IronHornEnterprises.com

Available For Lease

**4522 Wetzel Rd,
Liverpool, NY 13090**

