

AVAILABLE COMMERCIAL SPACE

THE TOWER | SUITE 1100/11

402 E Yakima Avenue
Yakima, WA 98901



6,890 TOTAL SQUARE FEET

Flexible space encompasses an entire floor. Lobby and reception area. Conference and break room. Many private offices.

- Secured building with keycard/pad entry
- Large conference room
- Great city views
- Signage available
- Open-concept inner office area
- Professionally managed



Excellent access to I-82 and transit center



Numerous restaurants, hotel, and retail amenities



Located in the heart of downtown

JEM

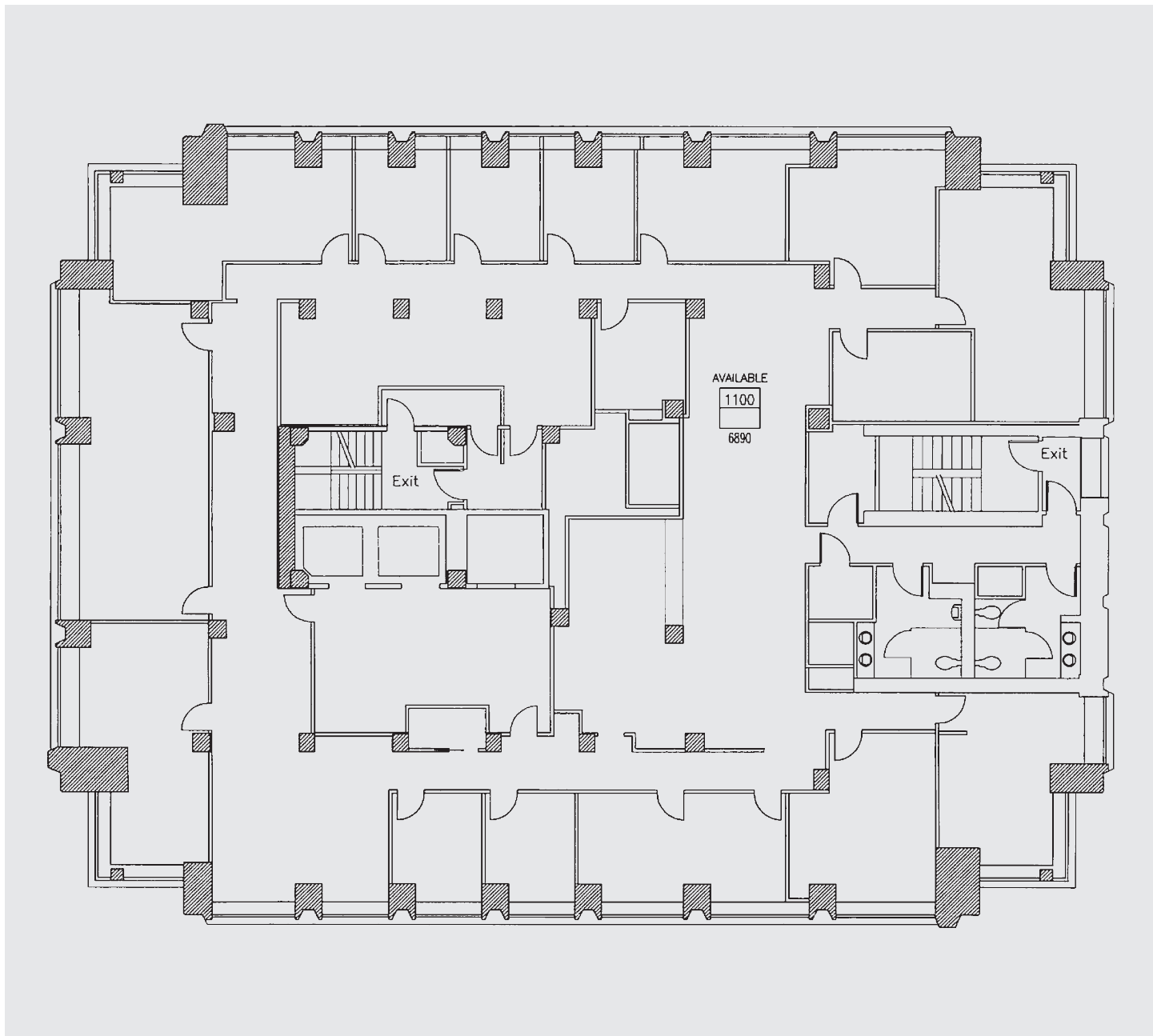
DEVELOPMENT
REAL ESTATE INC.

Contact Elizabeth M. McGree at 509.248.4040 x104 | jemdevelopment.com

AVAILABLE COMMERCIAL SPACE

THE TOWER | SUITE 1100/11

402 E Yakima Avenue
Yakima, WA 98901



JEM

DEVELOPMENT
REAL ESTATE INC.

Contact Elizabeth M. McGree at 509.248.4040 x104 | jemdevelopment.com