

FOR LEASE

801 D STREET

San Rafael, CA 94901



The information herein has not been independently verified by the real estate brokers. Interested parties should have experts of their choice inspect and verify all information. Real estate brokers are not experts with respect to building construction, environmental, legal, tax, and other such matters.

RORY TUTTLE

CA LIC #01927108

(415) 870-2036

rory@meridiancommercial.com



17 E. Sir Francis Drake Blvd., Suite 203 | Larkspur, CA 94939 | <https://www.meridiancommercial.com>

FOR LEASE

Property Summary

801 D STREET

San Rafael, CA 94901



PROPERTY DESCRIPTION

Ground retail or office with fantastic exposure to the busy Second and D intersection. Lots of natural light and highly configurable interior space that would suit many uses.

PROPERTY HIGHLIGHTS

- Unparalleled signage!
- South and East facing window lines
- High Ceilings
- 2 Parking spots

LOCATION DESCRIPTION

Located in the heart of downtown San Rafael, the area surrounding the property offers a vibrant mix of amenities and attractions tailored to the needs of retail or office tenants. The corner of 2nd and D gives tremendous exposure to your business with a daily car count in the tens of thousands.

OFFERING SUMMARY

Lease Rate:	\$2.25 SF/month (Gross)
Available SF:	±1,100 SF
Lot Size:	±0.69 Acres
Building Size:	±5,425 SF
Property Type:	Retail

RORY TUTTLE

CA LIC #01927108

(415) 870-2036

rory@meridiancommercial.com

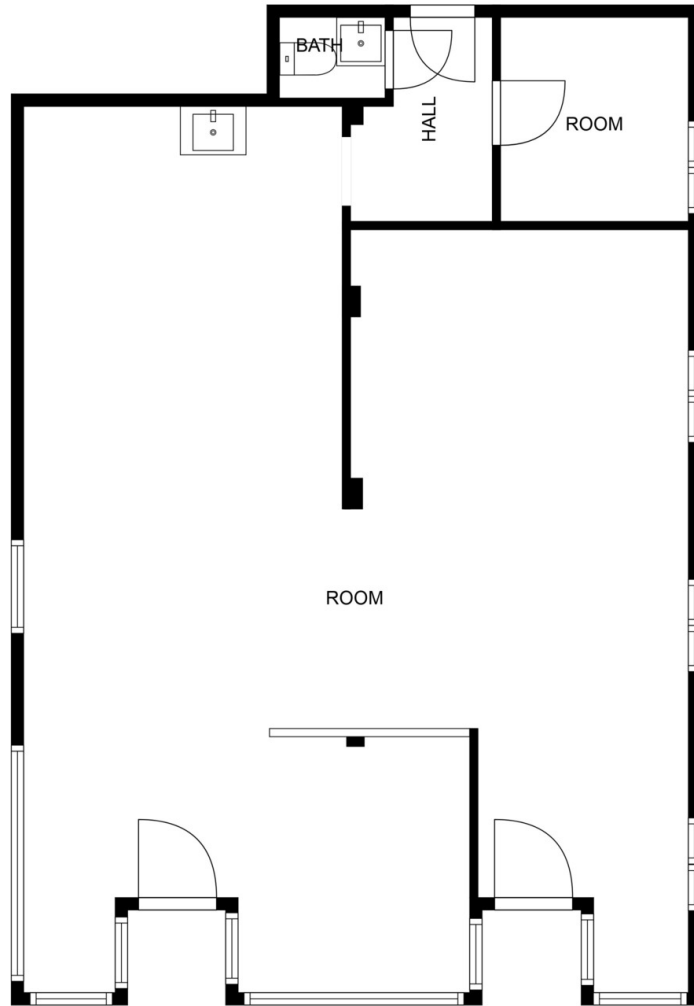


FOR LEASE

Additional Photos

801 D STREET

San Rafael, CA 94901



FLOOR PLAN CREATED BY CUBICASA APP. MEASUREMENTS DEEMED HIGHLY RELIABLE BUT NOT GUARANTEED.



RORY TUTTLE

CA LIC #01927108

(415) 870-2036

rory@meridiancommercial.com

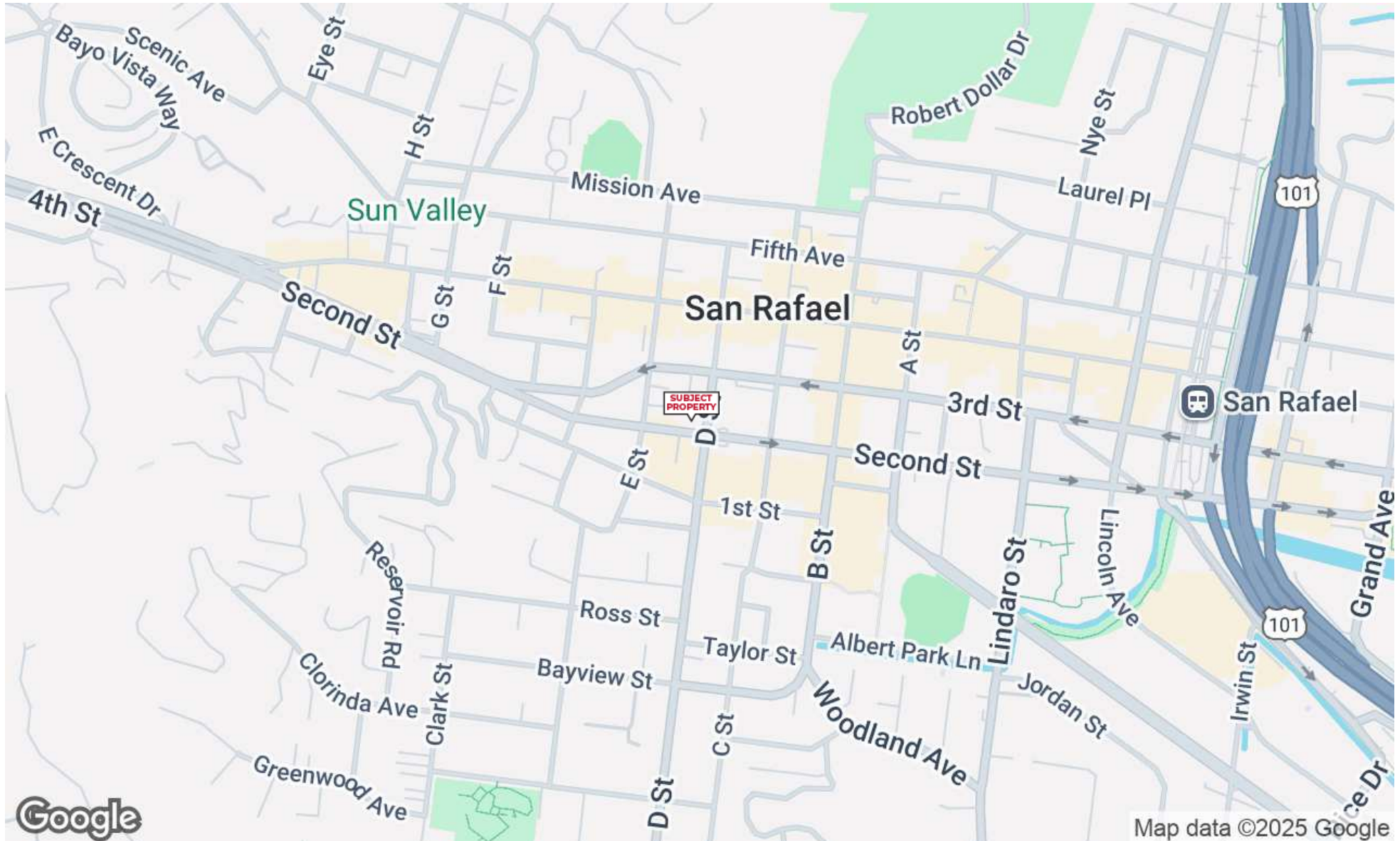


FOR LEASE

Location Map

801 D STREET

San Rafael, CA 94901



RORY TUTTLE

CA LIC #01927108

(415) 870-2036

rory@meridiancommercial.com

