

Mid America Office Complex

Mid America Blvd. Oklahoma City, OK 73135

PROPERTY INFORMATION

- **Type:** Office
- **Size:** Up to 9,000 RSF
- **Rate:** Targeting \$40/SF Full-Service w/ Expense Stop

PROPERTY HIGHLIGHTS

- Newly Constructed 2-Story Office Buildings Overlooking Pond.
- Located South of I-240 (45,000 AADT 2023)

AVAILABILITY

- **Building B**
- 1st Floor - Up to 9,000 SF
- **Building D**
- 1st Floor – 1,800 SF
- 2nd Floor – Up to 7,700 SF

Property Information



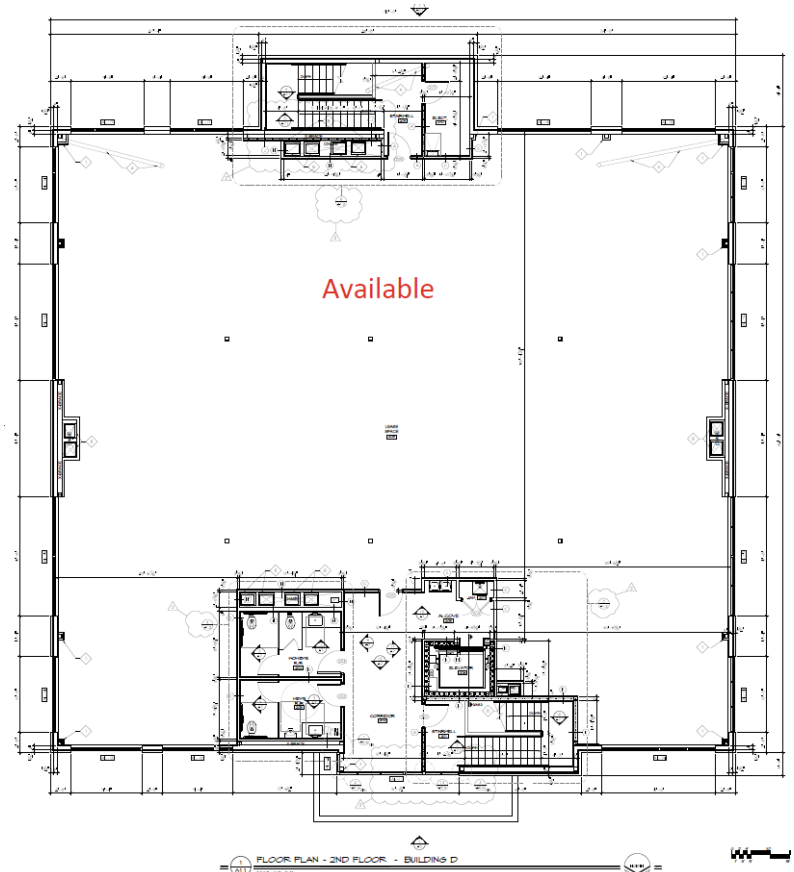
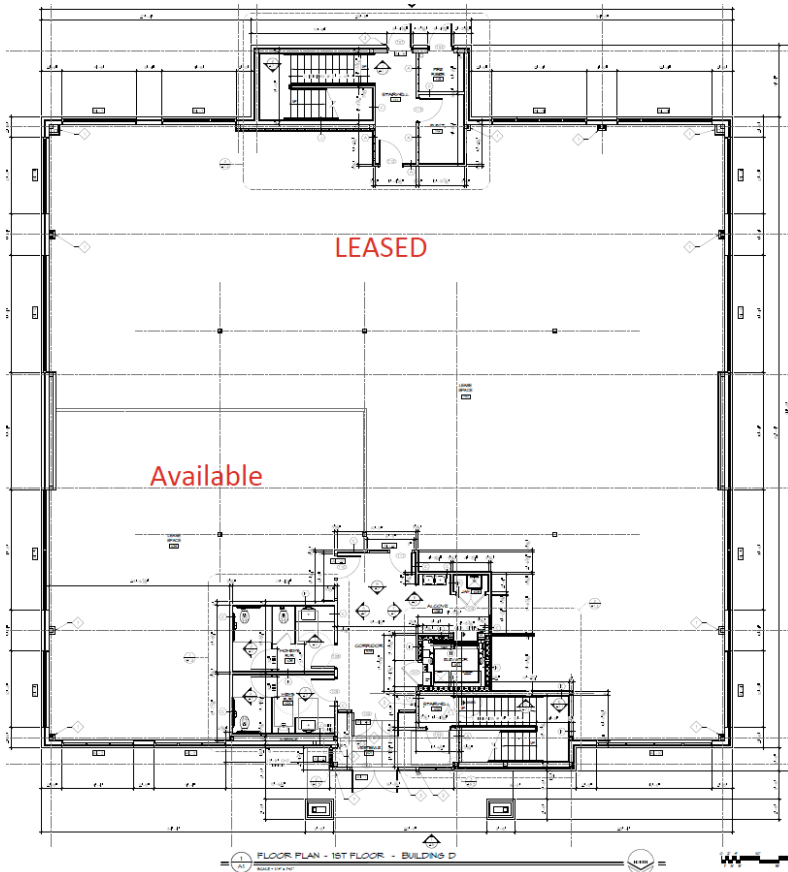
Office Building D

- Year Built: 2026
- Bldg Size: 15,494 SF
- Build-out: Shell
- Rate: \$40/SF Full-Service w/ Exp Stop
- Allowance: Yes
- Parking – 6.9 / 1000 SF
- Class A Development in South OKC
- Newly Constructed 2-Story Office Buildings
- Suites Overlooking Pond.
- Located South of I-240 (45,000 AADT 2023)

Availability

Building D

- 1st Floor – 1,800 RSF
- 2nd Floor – Up to 7,724 RSF



I-240 & MID-AMERICA BLVD.

OVERALL SITE CONCEPT
MIDWEST CITY, OK

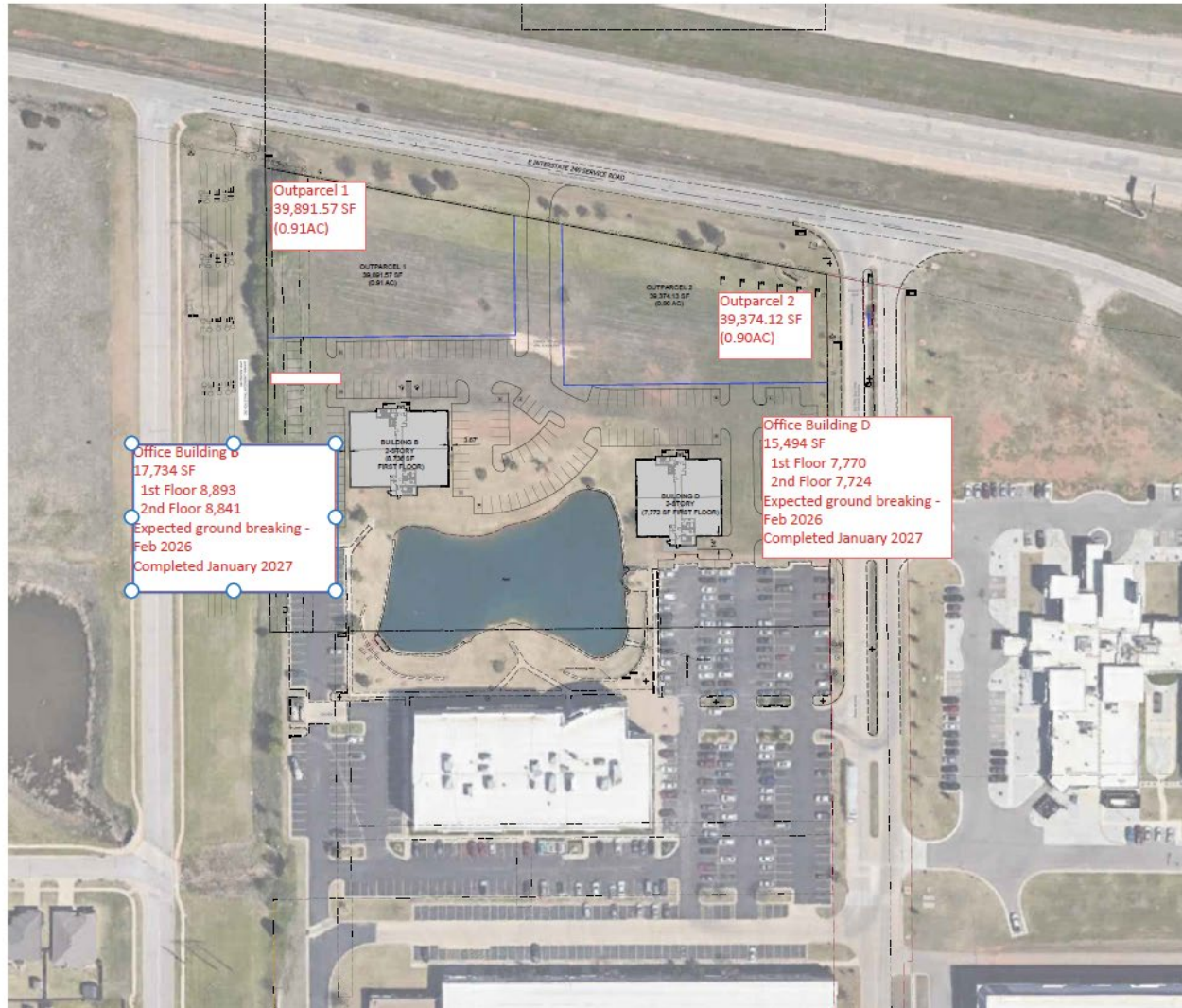
CONCEPT ILLUSTRATION
DRAWING PREPARED SEPTEMBER 25, 2025

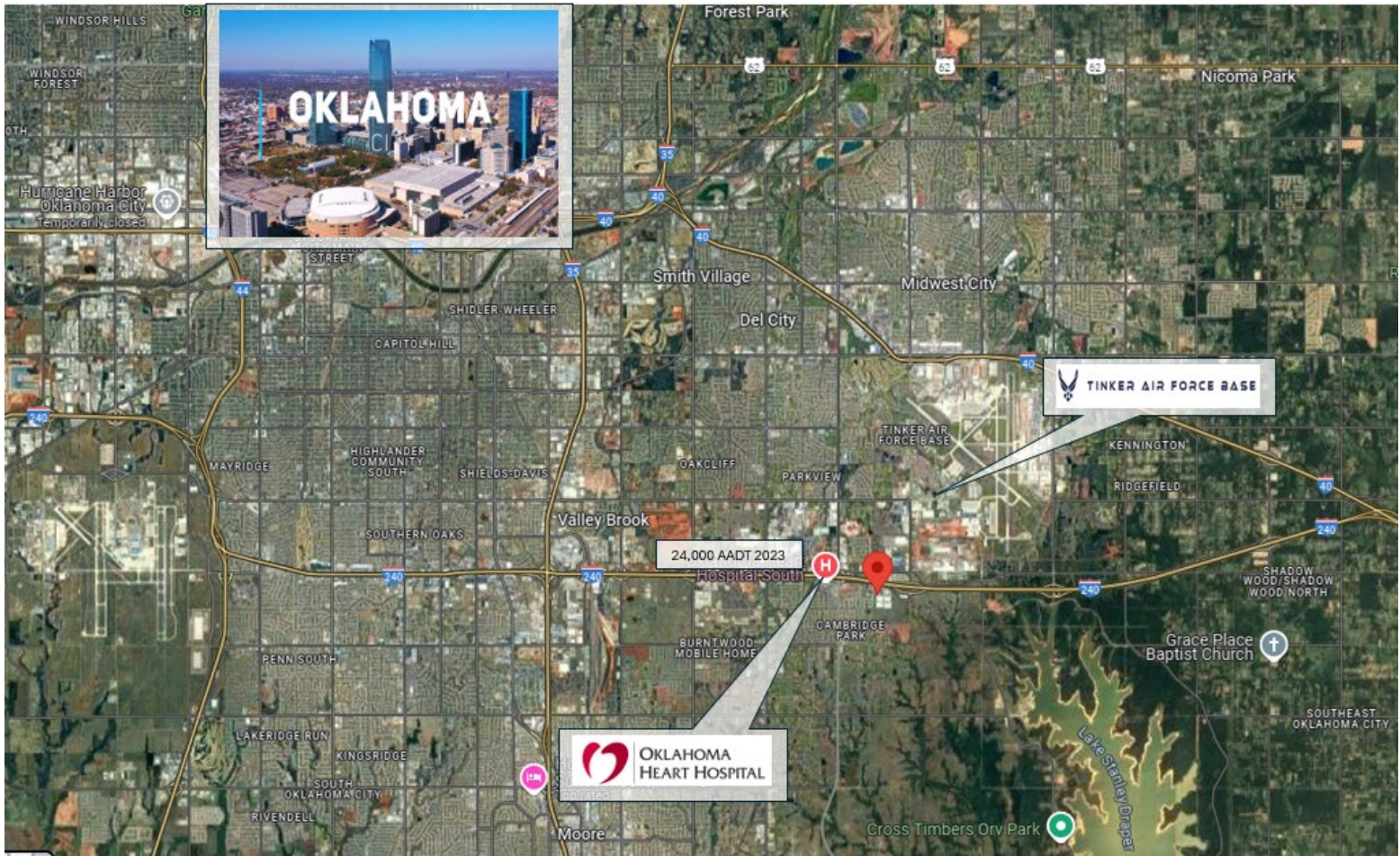


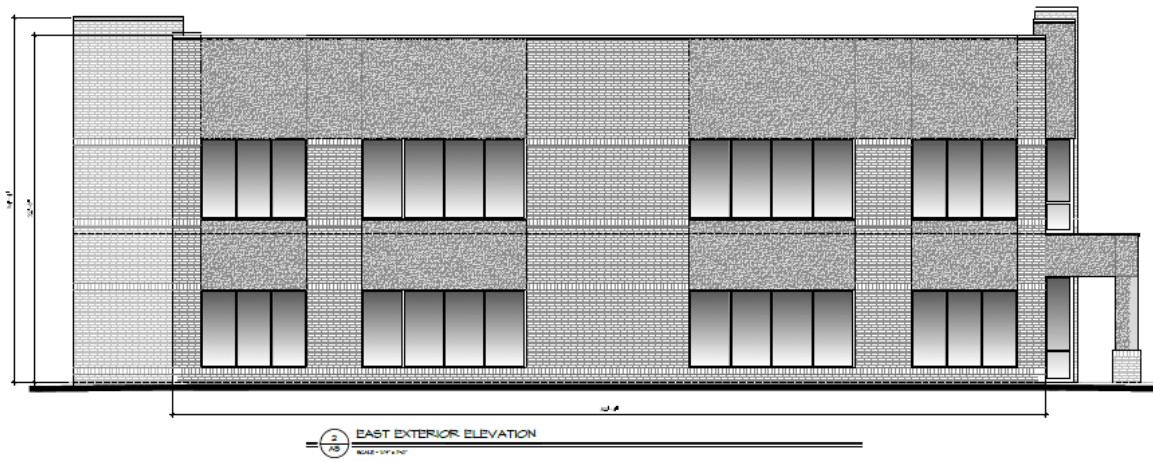
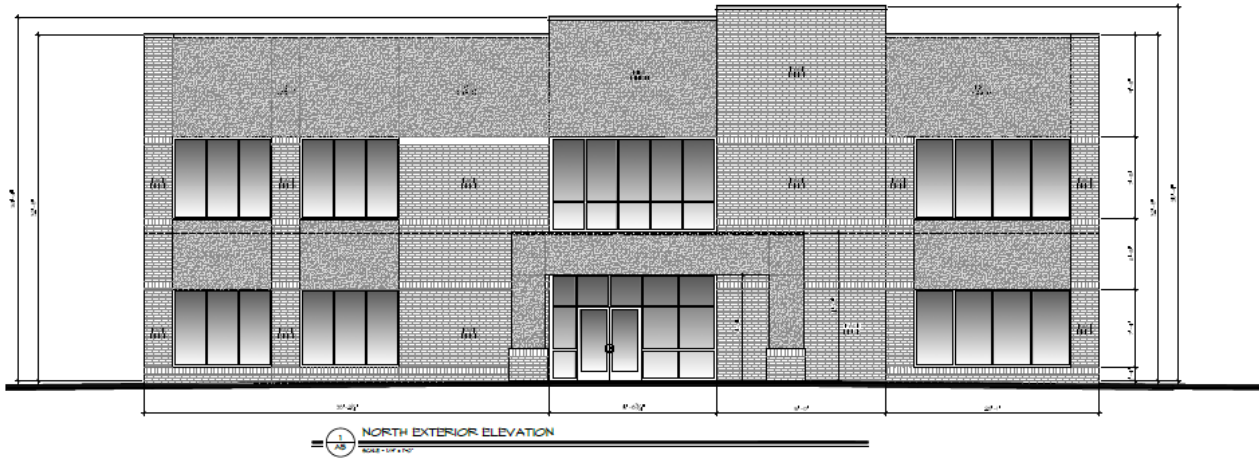
SITE DATA

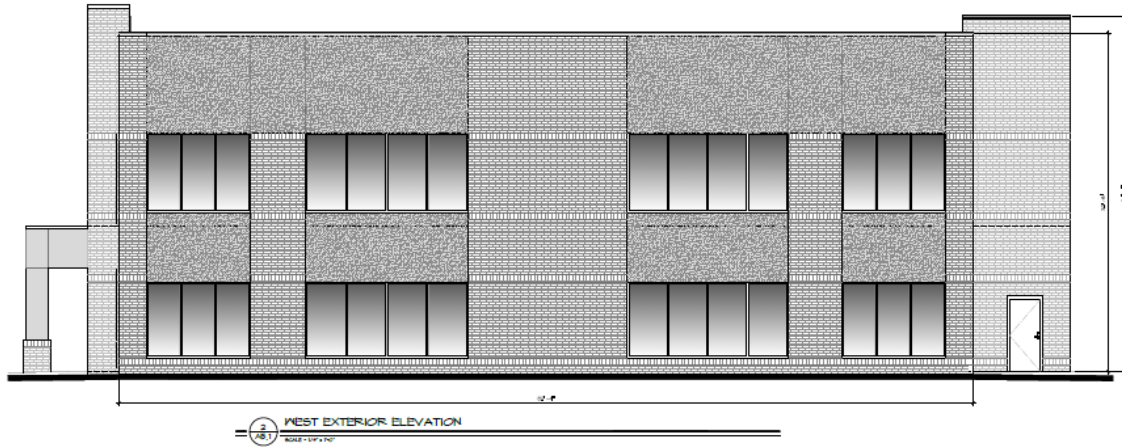
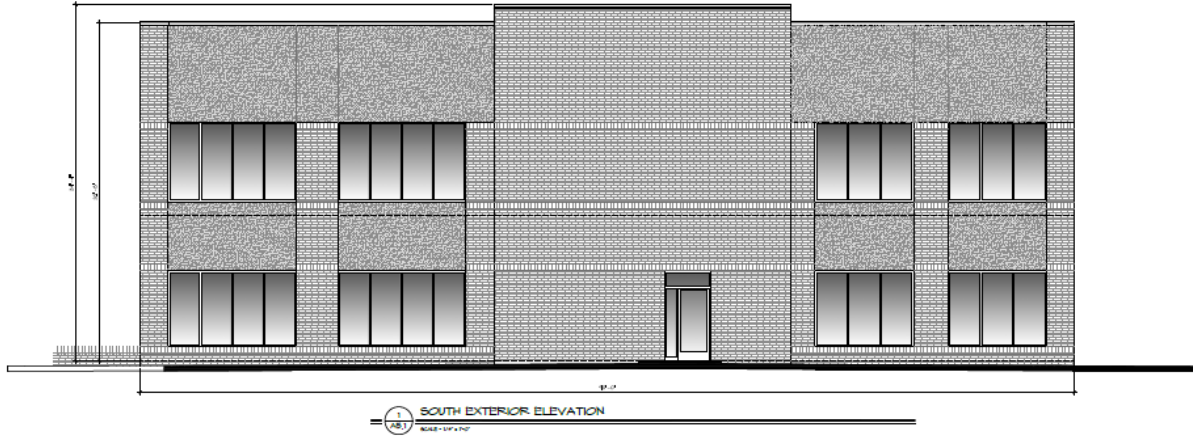
TOTAL PROVIDED PARKING: 180 P.S.
HANDICAP PARKING PROVIDED: 8 P.S.
PARKING SPACE DIMENSIONS PROVIDED: 9'x18' (TYP.)

ORIGINAL PAPER SIZE 24X36











Contact



Eric Williams
ewilliams@mcgeecre.com
(405) 819-1638
McGee Commercial Real Estate
4324 Grant Blvd
Yukon, OK 73099