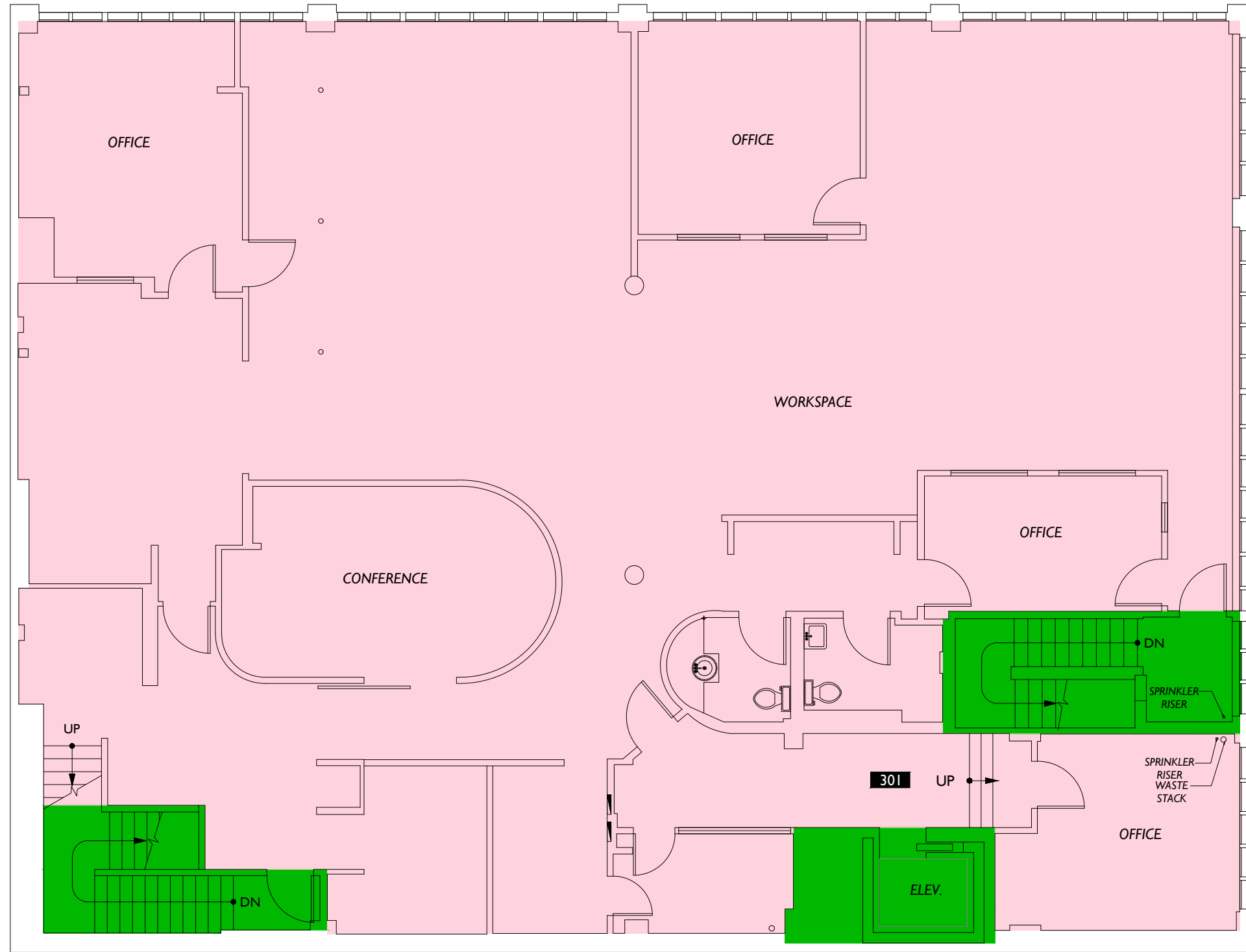


East Pine Street

Parking



11th Avenue

Floor Summary	SQ. FT.
Total Rentable Area	4,798.44
Total Occupant Area	4,214.51
Load Factor	1.138551

Floor Service Area	0.0
Building Service Area	0.0
Total Vertical	363.25

Suite #	Occupant Area	Rentable Area
Suite 301	4,214.51	4,798.44

Area Analysis performed in accordance with ANSI/BOMA Z65.1 - 2017 Method A Standard.

Adjacent Building

Misha Averill/Legacy Commercial LLC 400-112th Avenue NE Suite 230 Bellevue, WA 98004	Office 1535 11th Avenue Seattle, WA 98122	3 Floor	Measured: July 2020 Project: C20-627
Client		Subject	
2DFLOORPLANS.COM 425-677-7511 600 NW Gilman Blvd. Suite E Issaquah, WA 98027		Scale	