

Miramar
TECH LOFTS

Professional Offices FOR LEASE

5790-5820 MIRAMAR ROAD, SAN DIEGO, CA 92121



Bo Gibbons | Senior Director - Sales & Leasing | Bo@PacificCoastCommercial.com | Lic. 01367936

Brian Crepeau | Executive Director | Brokerage | Brian@PacificCoastCommercial.com | Lic. 01169628


**PACIFIC COAST
COMMERCIAL**
SALES · MANAGEMENT · LEASING

Professional Offices FOR LEASE

5790-5820 MIRAMAR ROAD, SAN DIEGO, CA 92121



PROPERTY FEATURES:

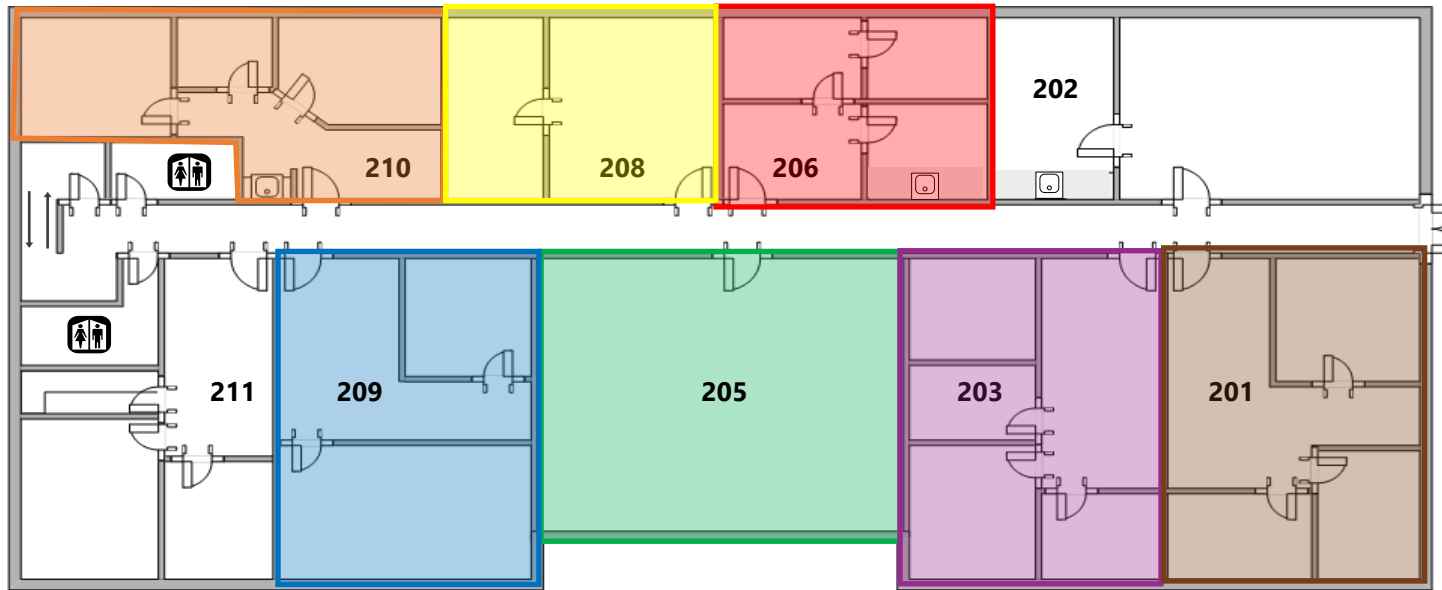
- Approx. 420 - 3,750 SF Office Space Available
- Recently Remodeled Common Areas & Restrooms
- Great Location, 1 minute from Interstate 805
- Low Cost Alternative to UTC Office Space
- NO Core Factor or Operating Expense Pass-Thru
- Limited Covered Reserved Parking Available
- Lease Rate: Negotiable

The information contained herein has been given to us by the owner of the property or other sources we deem reliable, we have no reason to doubt its accuracy, but we do not guarantee it. All information should be verified prior to transaction.

Bo Gibbons | Senior Director - Sales & Leasing | Bo@PacificCoastCommercial.com | Lic. 01367936

Brian Crepeau | Executive Director | Brokerage | Brian@PacificCoastCommercial.com | Lic. 01169628





LEASE RATES: Negotiable
Contact Agent

SUITE 201

- 900 SF
- Three (3) Private Offices
- Contiguous for 3,750 RSF

SUITE 203

- 900 SF
- Four (4) Private Offices
- Contiguous for 3,750 RSF

SUITE 205

- 1,050 SF
- Open Office
- Contiguous for 3,750 RSF

SUITE 206

- 525 SF
- Two (2) Private Offices
- Small Kitchenette with Sink
- Contiguous for 1,835 SF

SUITE 208

- 560 SF
- Two (2) Room Office Suite
- Contiguous for 1,835 SF

SUITE 209

- 900 SF
- Two (2) Private Offices
- Open Office/Reception Area
- Contiguous for 3,750 RSF

SUITE 210

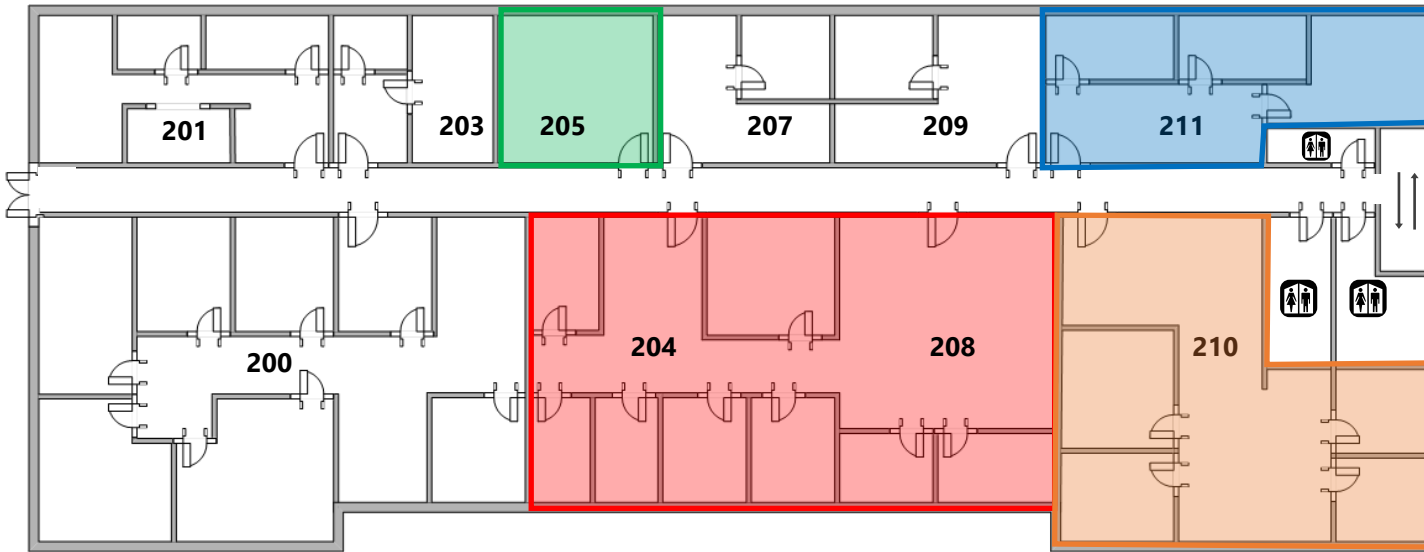
- 750 SF
- Three (3) Private Offices
- Open Office/Reception Area
- Kitchenette/Coffee Bar with Sink
- Contiguous for 1,835 SF

(Floor Plan and Site Plan are not scale for reference purposes only)

Bo Gibbons | Senior Director - Sales & Leasing | Bo@PacificCoastCommercial.com | Lic. 01367936

Brian Crepeau | Executive Director | Brokerage | Brian@PacificCoastCommercial.com | Lic. 01169628

5
8
2
0



LEASE RATES: Negotiable
Contact Agent

SUITE 204-208

- 2,145 SF
- Reception
- Waiting Room
- Conference Room
- Six (6) Private Office
- Open Bull Pen
- Contiguous for 3,172 SF

SUITE 205

- 420 SF
- One (10) Room Office

SUITE 211

- 720 SF
- Reception
- Three (3) Private Office

SUITE 210

- 1,027 SF
- Corner Suite with Extended Window Line
- Three (3) Private Offices
- Reception
- Conference Room
- Kitchenette/Coffee Bar with Sink
- Contiguous for 3,172 SF

(Floor Plan and Site Plan are not scale for reference purposes only)

Bo Gibbons | Senior Director - Sales & Leasing | Bo@PacificCoastCommercial.com | Lic. 01367936

Brian Crepeau | Executive Director | Brokerage | Brian@PacificCoastCommercial.com | Lic. 01169628



Professional Offices FOR LEASE

5790-5820 MIRAMAR ROAD, SAN DIEGO, CA 92121



Bo Gibbons | Senior Director - Sales & Leasing | Bo@PacificCoastCommercial.com | Lic. 01367936

Brian Crepeau | Executive Director | Brokerage | Brian@PacificCoastCommercial.com | Lic. 01169628