

**Ramona Expressway**

**Business Park**



**Property Features**

<b>ADDRESS</b>	3458 Webster Ave BLDG 7
<b>AVAILABILITY TYPE:</b>	For Lease
<b>BUILDING SF:</b>	±9,716
<b>ACRES:</b>	0.53
<b>OFFICE SF:</b>	±1,051 SF
<b>CLEAR HEIGHT:</b>	23'
<b>POWER:</b>	400 Amps, 3 Phase
<b>PARKING:</b>	20
<b>GL DOOR:</b>	1 (12'x14')
<b>YARD:</b>	Fenced & Secured
<b>ZONING</b>	LI - SPECIFIC PLAN (TENANT TO VERIFY)



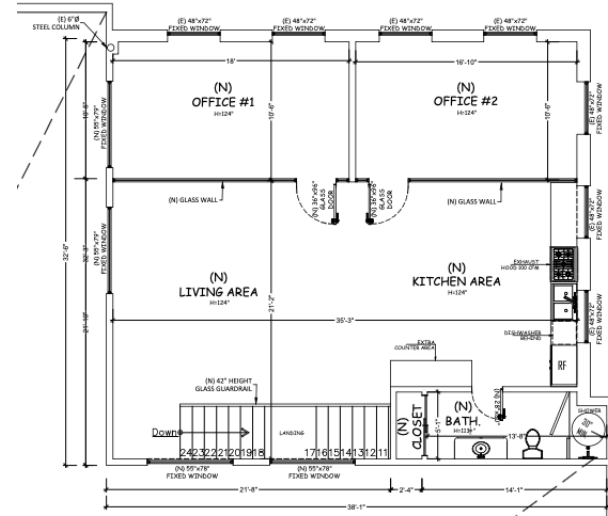
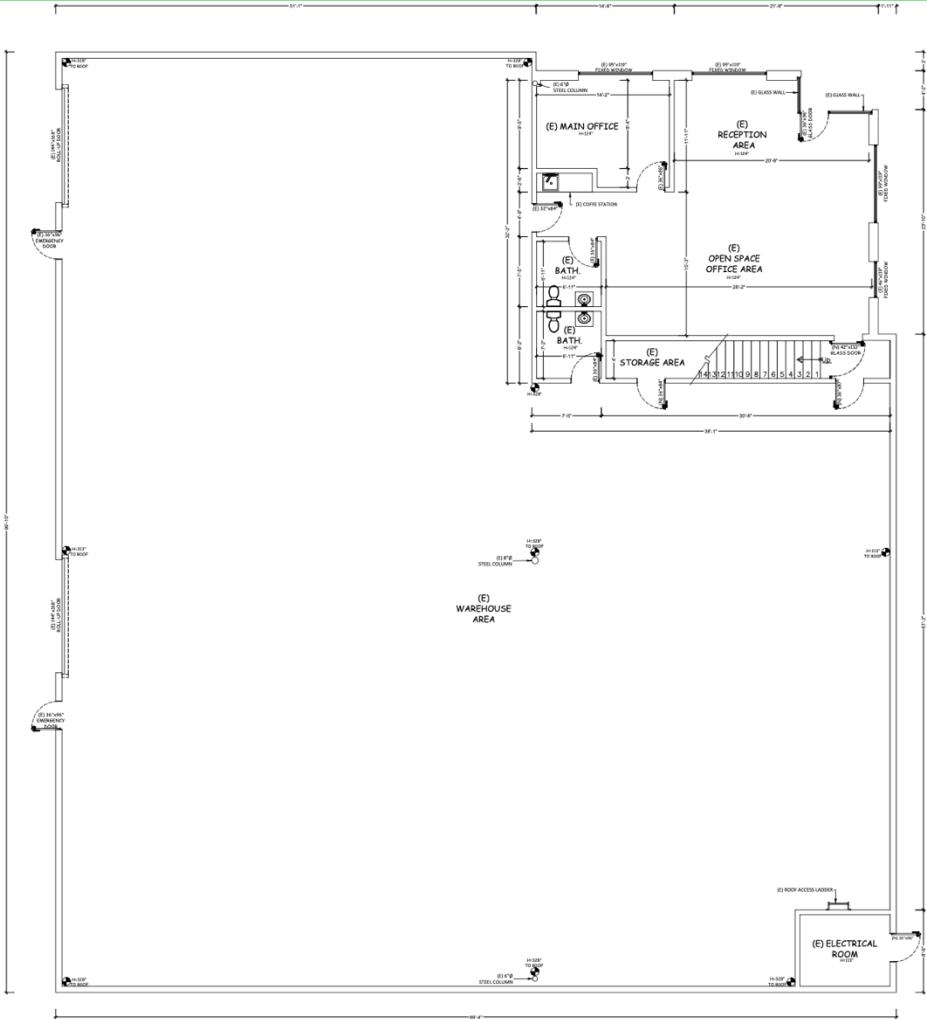
Steve Haddadin  
 DRE#: 01993983 // 714-393-0828  
 stevehaddadin@gmail.com

No warranty or representation has been made to the accuracy of the foregoing information. Terms of sale or lease and availability are subject to change or withdrawal without notice.

For Lease:

3458 Webster Ave. Perris, CA 92571

SITE PLAN



2nd Floor

\*\*\*Not included

# Office SITE PLAN

No warranty or representation has been made to the accuracy of the foregoing information. Terms of sale or lease and availability are subject to change or withdrawal without notice.

King Real Estate Group | Corporate DRE#: 02101338