

# For sublease

±4,505 SF office/warehouse available

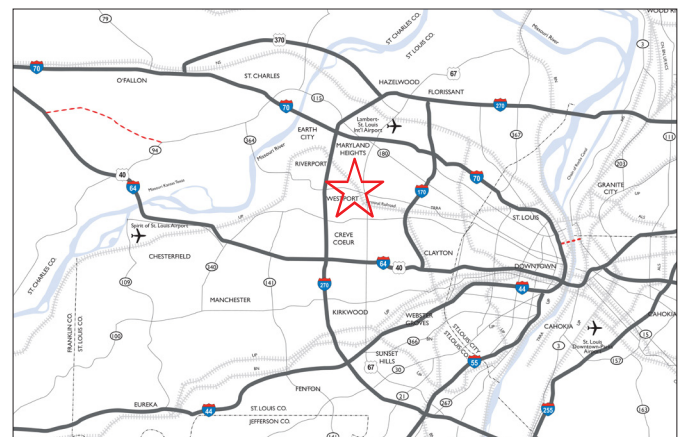
11905 - 11923 Borman Drive, St. Louis, MO 63146



## Property specificitaions

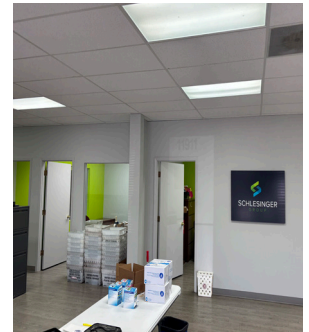
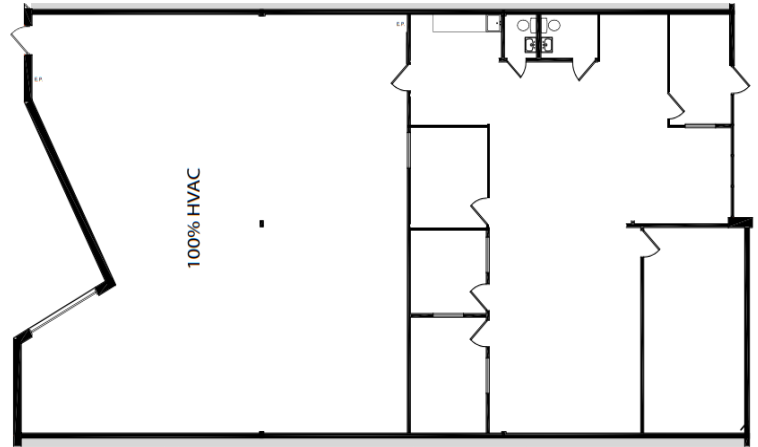
Size:	±4,505 SF
Ceiling height:	16'
HVAC:	100%
Loading:	Dock-high
Parking:	Ample surface parking
Office:	50% office finish
Lease expiration:	June 30, 2026

**Lease rate: \$6.75/SF NNN**



## Strategic location

Located at the intersection of Borman Drive and Congressional Drive just east of Craig Road with easy access to Page Avenue and Interstate 270 in the heart of Westport.



**Will Meehan**  
Senior Vice President  
+1 314 202 8626  
will.meehan@jll.com  
[jll.com/st-louis](http://jll.com/st-louis)

Jones Lang LaSalle Americas, Inc., a licensed real estate broker in 48 states | **DISCLAIMER** Although information has been obtained from sources deemed reliable, neither Owner nor JLL makes any guarantees, warranties or representations, express or implied, as to the completeness or accuracy as to the information contained herein. Any projections, opinions, assumptions or estimates used are for example only. There may be differences between projected and actual results, and those differences may be material. The Property may be withdrawn without notice. Neither Owner nor JLL accepts any liability for any loss or damage suffered by any party resulting from reliance on this information. If the recipient of this information has signed a confidentiality agreement regarding this matter, this information is subject to the terms of that agreement. ©2024. Jones Lang LaSalle IP, Inc. All rights reserved.