

SUBJECT

New Hwy 290

FM 359

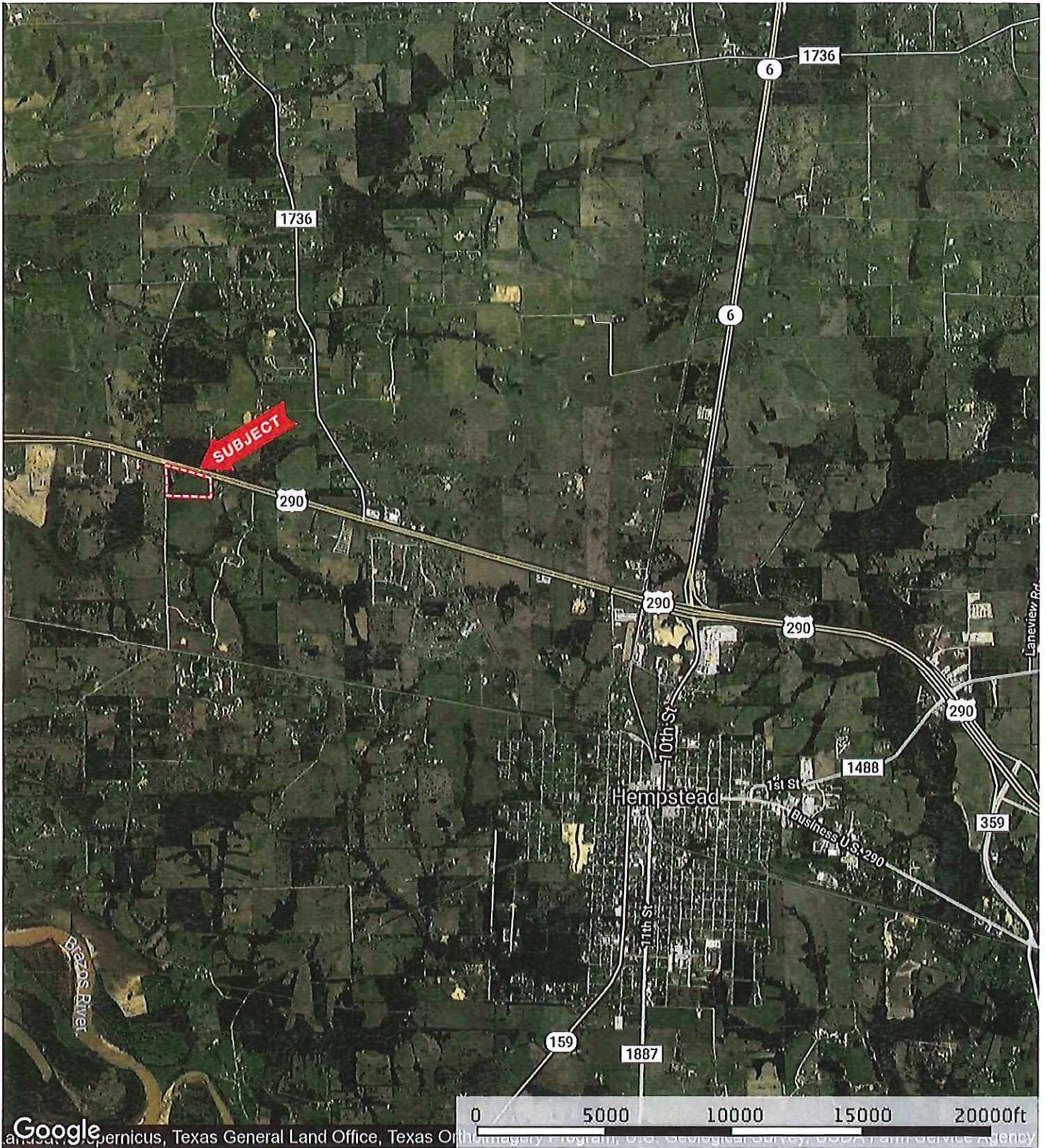
WALLER COUNTY LAND

BURTON CEMETARY

MOUND CREEK SUBDIVISION

WASHTEN PAUNCH

Hwy 290 W @ Sorsby
Waller County, Texas, AC +/-



Google


and satellite imagery, Texas General Land Office, Texas Orthometric Datum System, U.S. Geological Survey, USDA Farm Service Agency

 Boundary

Timothy Phelan
P: (936) 372-9181

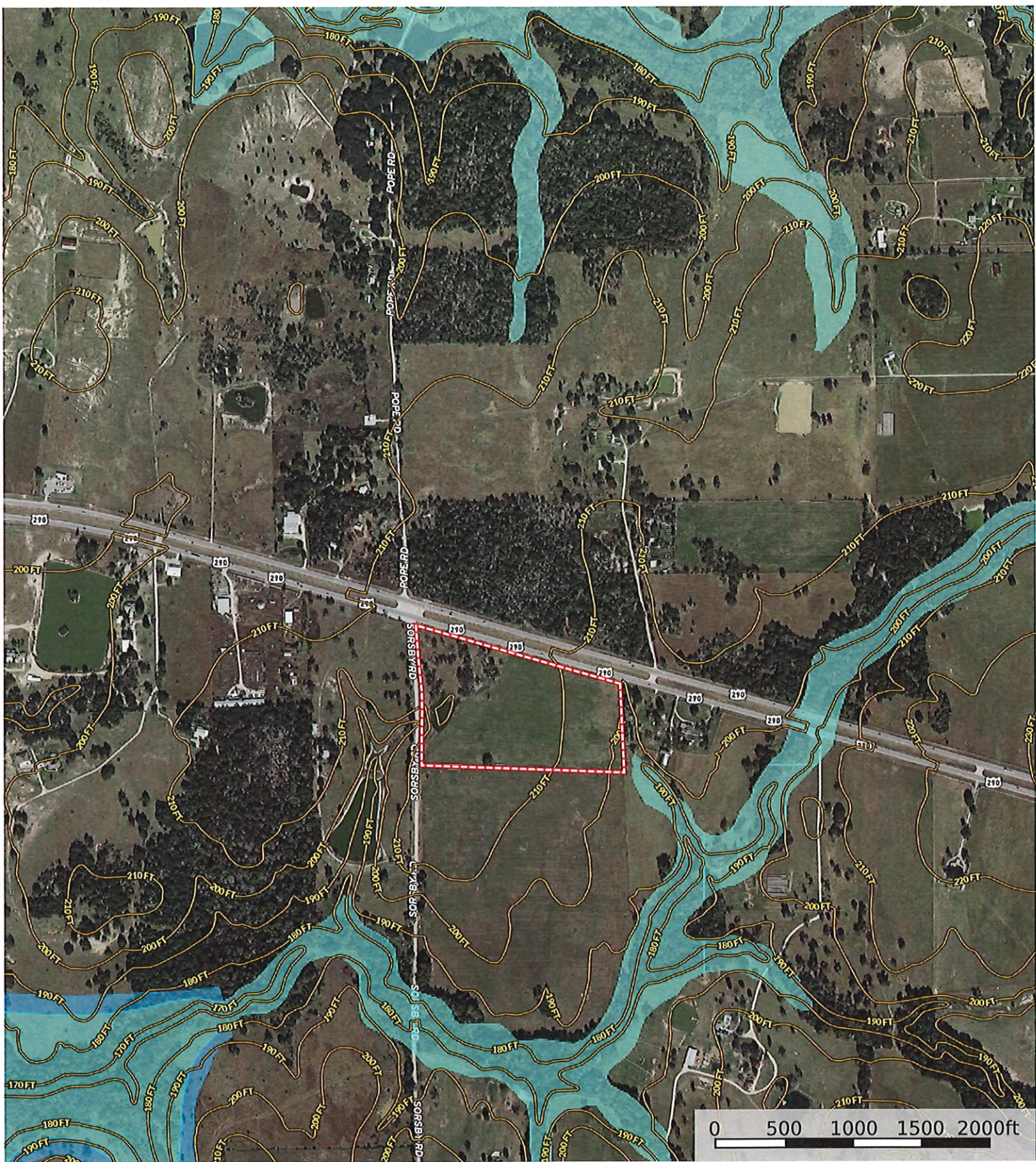
WallerCountyLand.com

P.O. Box 1274, Waller, Texas 77484

 The information contained herein was obtained from sources deemed to be reliable. MapRight Services makes no warranties or guarantees as to the completeness or accuracy thereof.



Boundary





Boundary Crude Oil Natural Gas Other