

NEW RETAIL SPACE FOR LEASE

810 S. 10th Street | Goshen, IN 46526



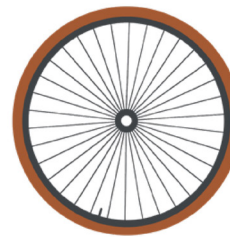
Great Ground Floor Opportunity Within the New Ariel Cycleworks Apartment Complex

| | |
|-------------------------|---------------------------|
| Space Available: | 800 SF Retail Endcap |
| Land: | 4.2 Acres |
| Zoning: | R3 PUD |
| Lease Rate: | \$12.00 - \$14.00 PSF NNN |

[VIEW PROPERTY ONLINE](#)



Details:

Now available for lease is an 800 SF ground-floor retail space within Goshen's newest development, the Ariel Cycleworks apartment community, currently under construction. This 136-unit multi-family property is set to begin pre-leasing in Spring 2026, creating a built-in customer base and consistent foot traffic for future tenants. The space offers a flexible layout ideal for a coffee shop, service-oriented business, or small retail boutique, with the added potential for outdoor patio seating to enhance customer experience. Positioned in a modern, high-visibility setting, this is a unique opportunity to establish your business in a growing and vibrant community. Secure your space now and grow alongside Ariel Cycleworks.



ARIEL
CYCLEWORKS

NAICressy

P 574.271.4060 | [CRESSY.COM](https://www.cressy.com) | CONNECT WITH US!    
200 N Church St., Suite 200, Mishawaka, IN 46544

Cressy Commercial Real Estate is a Minority Business Enterprise (MBE) as well as certified by the National Native American Supplier Council (NNASC).

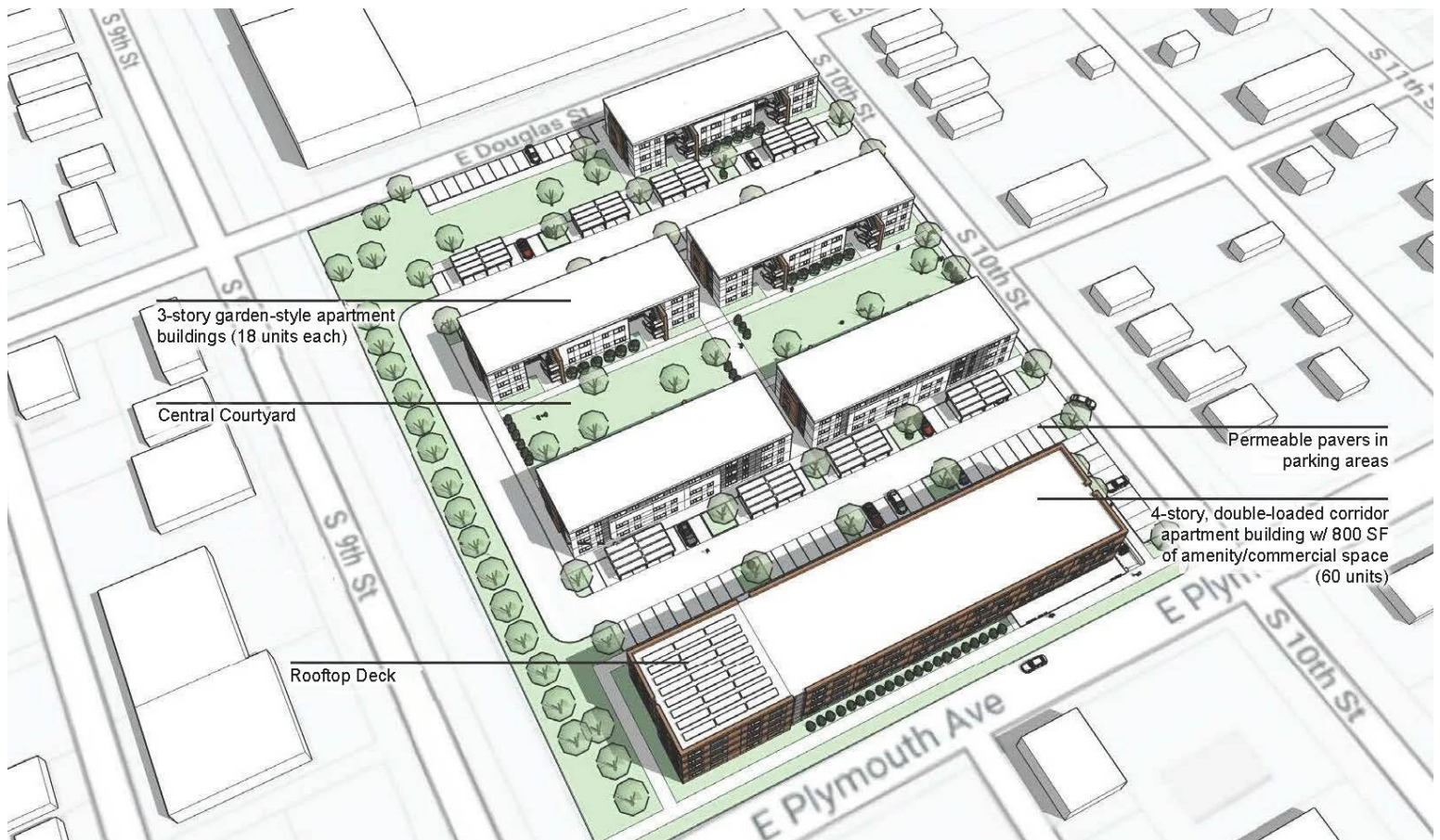


Information furnished regarding property for sale, rental or financing is from sources deemed reliable. But no warranty or representation is made as to the accuracy thereof and same is submitted subject to errors, omissions, change of price, rental or other conditions, prior sale, leased, financing or withdrawal without notice. No liability of any kind is to be imposed on the broker herein. NAI Cressy is the Global Brokerage Division of Cressy Commercial Real Estate.

John Mester
Senior Broker, Retail/Investments
D 574.485.1501
jmester@cressy.com

DESIGN CONCEPT

AXONOMETRIC VIEW FROM SOUTHWEST



Ariel Cycleworks

Since November 2024 when AP Development officially broke ground on the new mixed-use development at Ariel Cycleworks, the former Brownfield site has gradually grown into four buildings that will soon house 136 apartments.

The new Ariel Cycleworks Apartments will consist of five buildings, three with three stories and one larger, four-story corner building, and will feature amenities including access to the Ninth Street Trail, a rooftop deck, dog wash, bike repair and storage areas, ample green space, and an 800-square-foot corner commercial space currently available for lease.

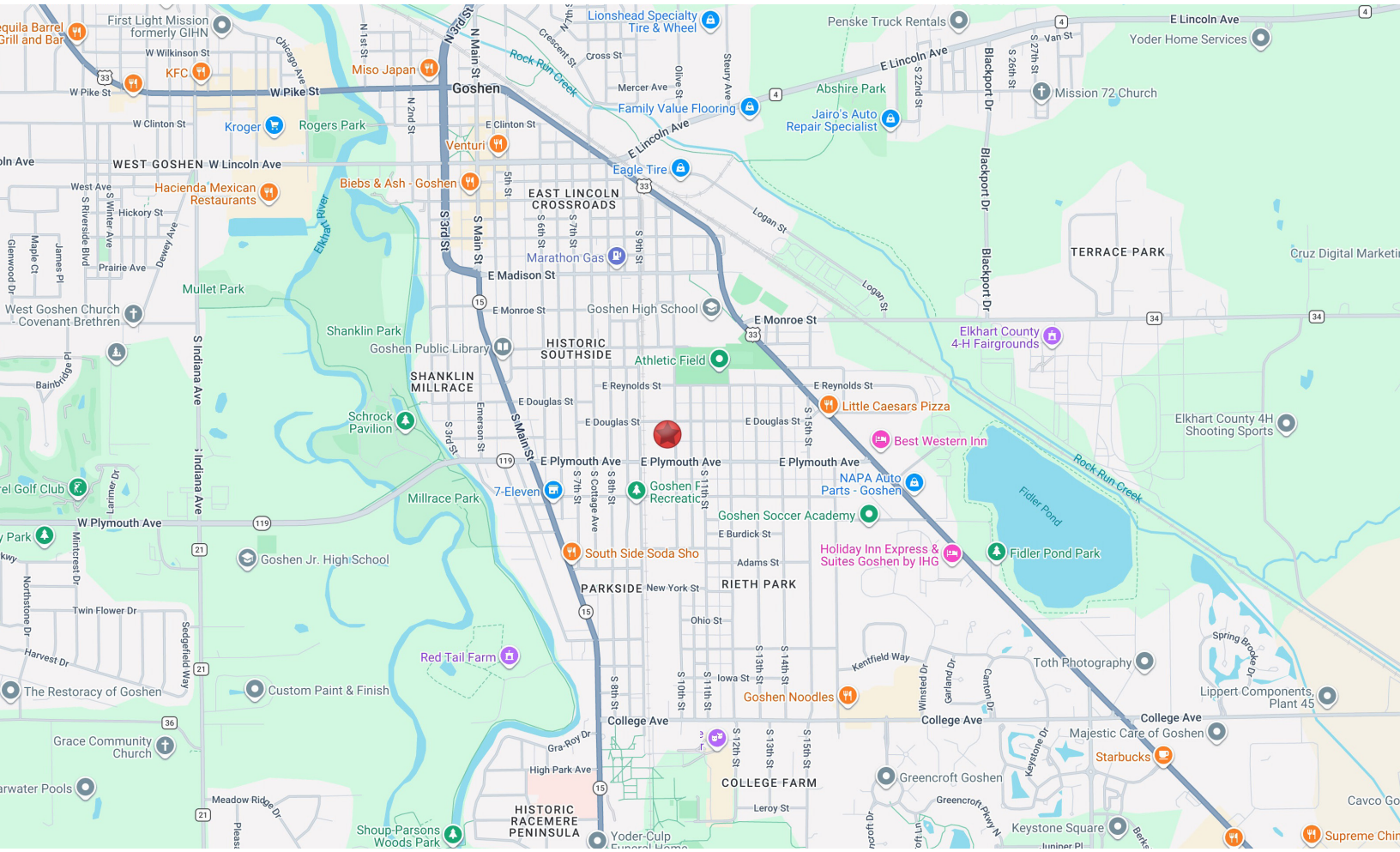
[RECENT PROJECT NEWS](#)

[LEARN MORE FROM THE DEVELOPER](#)

LOCATION OVERVIEW

NEW RETAIL SPACE FOR LEASE

810 S. 10th Street | Goshen, IN 46526

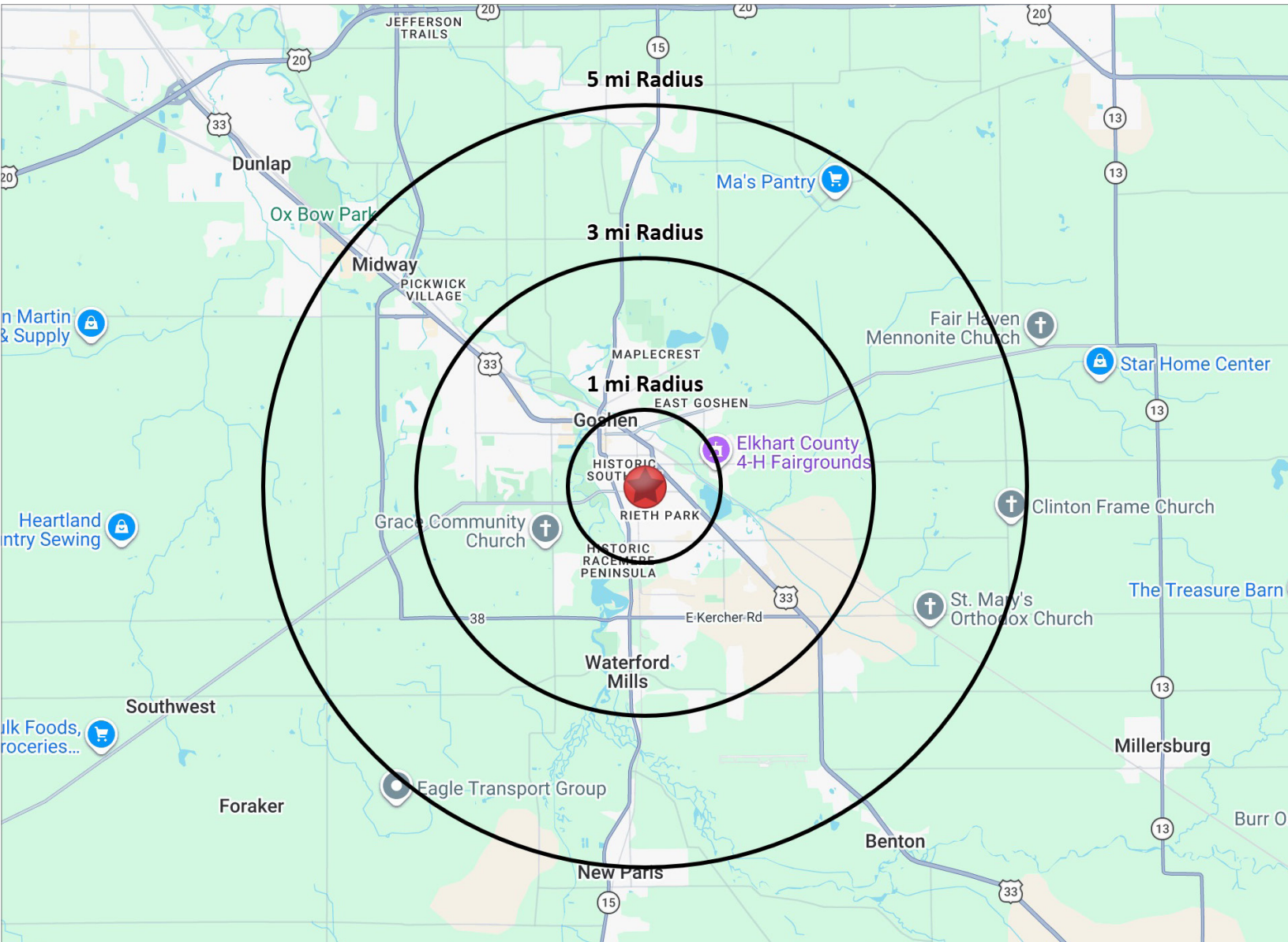


Ideally located within a dense residential neighborhood just south of downtown Goshen, Ariel Cycleworks offers excellent accessibility and connectivity along the well-traveled 9th Street Corridor Trail. This prime location places the property just minutes from Goshen College, Goshen High School, and Goshen Hospital, providing consistent exposure to students, faculty, healthcare professionals, and local residents alike. The site is also in close proximity to several major RV manufacturers, adding to the area's steady workforce presence. Conveniently situated just east of SR 15, the property allows for easy regional access, making it an attractive and highly visible destination for both daily commuters and the surrounding community.



NAICressy is the Global Brokerage Division of Cressy Commercial Real Estate.

John Mester
Senior Broker, Retail/Investments
D 574.485.1501
jmester@cressy.com



POPULATION

| | |
|--------|--------|
| 1 MILE | 8,197 |
| 3 MILE | 32,650 |
| 5 MILE | 48,291 |



NUMBER OF HOUSEHOLDS

| | |
|--------|--------|
| 1 MILE | 3,358 |
| 3 MILE | 12,130 |
| 5 MILE | 17,241 |



AVERAGE HOUSEHOLD INCOME

| | |
|--------|----------|
| 1 MILE | \$74,305 |
| 3 MILE | \$84,036 |
| 5 MILE | \$92,141 |



MEDIAN HOME VALUE

| | |
|--------|-----------|
| 1 MILE | \$182,846 |
| 3 MILE | \$202,604 |
| 5 MILE | \$219,788 |