

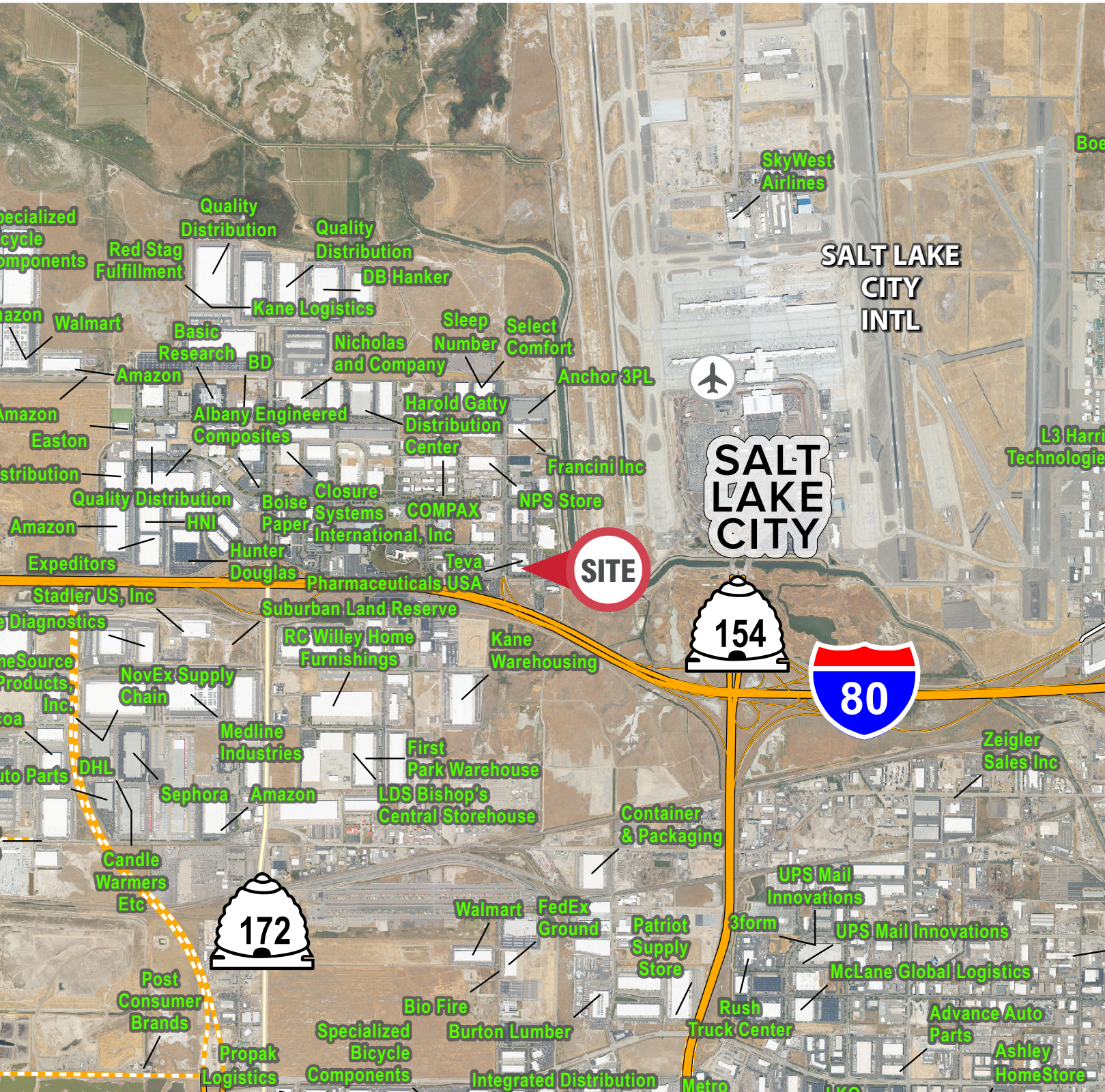
AIRPORT BUSINESS CENTER

150 North Write Brothers Drive BUILDING 5 | Salt Lake City, UT 84116

AIRPORT BUSINESS CENTER

150 North Wright Brothers Drive Building 5 | Salt Lake City, UT 84116

**4.5% TO
PRODUCING BROKER**



EXTERIOR RENDERING FOR ILLUSTRATIVE PURPOSES ONLY - DESIGN NOT FINAL

New Ownership



NEWLY RENOVATED



ZONING: M1



TWO (2) UNITS AVAILABLE

FOR LEASE

Starting Rate \$0.90 PSF NNN
2nd Year Rate: \$1.00 PSF NNN
3rd Year Rate: \$1.10 PSF NNN
NNN : \$0.20 PSF Budget

Unit 510

Total: 2,405 SF
Office: 400 SF
Warehouse: 2,005 SF
Loading: One (1) 12' x 12' Grade Level Door

Unit 530

Total: 3,634 SF
- Office: 1,152 SF
- Warehouse: 2,482 SF
- Loading: One (1) 12' x 12' Grade-Level Door

Property Highlights

- Clear Height: 14'
- Grade Level Door: 12'x12' Grade Level Doors
- Power: 200 Amps 208 V 3 Phase 4 Wire Per Unit
- Swamp Cooler in Warehouse
- Gas Forced Heat
- New Landscaping
- 3 Tone Paint Scheme
- Modern Lighting
- Asphalt Upgrades
- Construction type: Concrete Pillars, Steel Frame, and Brick Masonry Facade
- Year Built: 1982/1998/2026
- Lot size: 4.43 Acres
- Access: Quick Access to I-80
- Location: Located in the Salt Lake International Center directly west of the Salt Lake International Airport



Contact

SKYLER PETERSON, SIOR
Executive Vice President
m 801.656.7354
speterson@legendcommercial.com

TRE BOURDEAUX, SIOR
Vice President
m 801.824.0397
tbourdeaux@legendcommercial.com



Contact

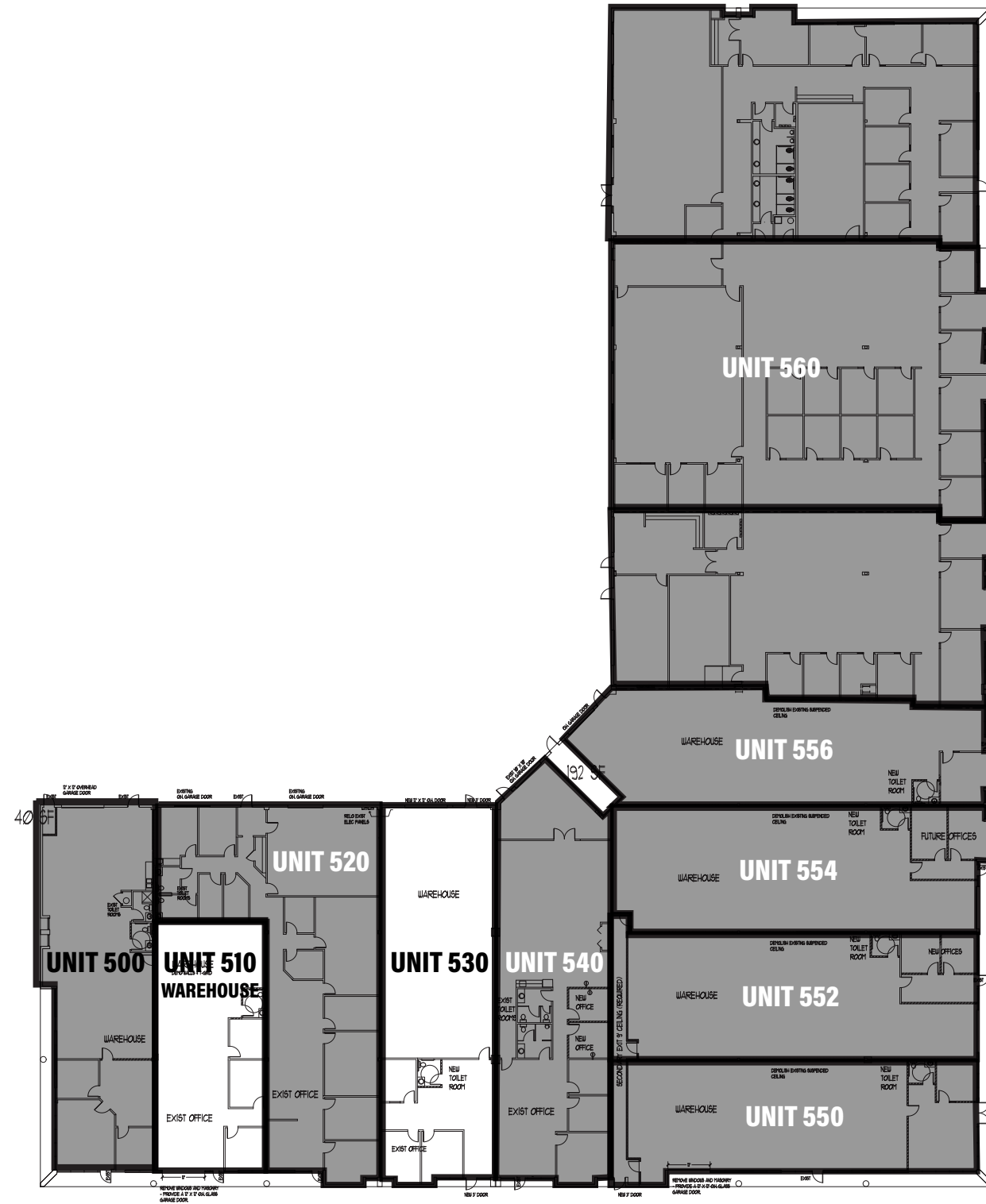
SKYLER PETERSON, SIOR
Executive Vice President
m 801.656.7354
speterson@legendcommercial.com

TRE BOURDEAUX, SIOR
Vice President
m 801.824.0397
tbourdeaux@legendcommercial.com



AIRPORT BUSINESS CENTER

150 North Write Brothers Drive BUILDING 5 | Salt Lake City, UT 84116



| Unit | Square Footage |
|------|----------------|
| 500 | 3,431 |
| 510 | 2,405 |
| 520 | 4,536 |
| 530 | 3,634 |
| 540 | 3,654 |
| 550 | 3,842 |
| 552 | 3,857 |
| 554 | 4,008 |
| 556 | 3,476 |
| 560 | 5,652 |

Contact

SKYLER PETERSON, SIOR
Executive Vice President
m 801.656.7354
speterson@legendcommercial.com

TRE BOURDEAUX, SIOR
Vice President
m 801.824.0397
tbourdeaux@legendcommercial.com

COMMERCIAL PARKS  **LEGEND COMMERCIAL**
801.930.6750 | www.legendcommercial.com
2180 S 1300 E, Suite 240 | Salt Lake City, UT 84106

Contact

SKYLER PETERSON, SIOR
Executive Vice President
m 801.656.7354
speterson@legendcommercial.com

TRE BOURDEAUX, SIOR
Vice President
m 801.824.0397
tbourdeaux@legendcommercial.com

COMMERCIAL PARKS  **LEGEND COMMERCIAL**
801.930.6750 | www.legendcommercial.com
2180 S 1300 E, Suite 240 | Salt Lake City, UT 84106