



**ONE MONTH OF ABATED RENT PER YEAR OF LEASE TERM FOR QUALIFIED LEASES**

**FOR LEASE**

# 2,785 – 53,171 SF OFFICE/MEDICAL SPACE RATES STARTING AT \$14.00/SF MODIFIED GROSS

## Key Features

- Medical and professional office space
- Located conveniently between TMC and St Josephs Hospitals
- Walk to lunch with several restaurants in walking distance
- Easy access from Speedway, Wilmot, & El Dorado Place
- Offices have balconies or patio areas
- Take advantage of the great rate!
- Tenant improvements negotiable

## Property Details

Parcel Size	5.63 acres
Zoning	C-1
Covered Parking	96 covered
Parking	280 surface; 5.36/1,000

### Site Plan



Molly Mary Gilbert  
 Office Properties  
 +1 520 546 2766  
[mgilbert@picor.com](mailto:mgilbert@picor.com)

Thomas J. Nieman  
 Principal, Office Properties  
 +1 520 546 2728  
[tnieman@picor.com](mailto:tnieman@picor.com)

picor.com

**Available Suites**

**All suites can be combined for additional SF**

**\*Space can be demised**



BUILDING	SUITE	LEVEL	SQUARE FOOTAGE*
1111	111-112	Garden	5,316
	211-212	Ground	5,569
	314-315	Second	5,872
1121	107-110	Garden	5,511
	207-210	Ground	5,696
	309 -312	Second	6,420
1141	105-106	Garden	5,316
	206	Ground	2,785
	306-307	Second	5,872*
1161	103-104	Garden	5,343
1181	101-102	Garden	5,343

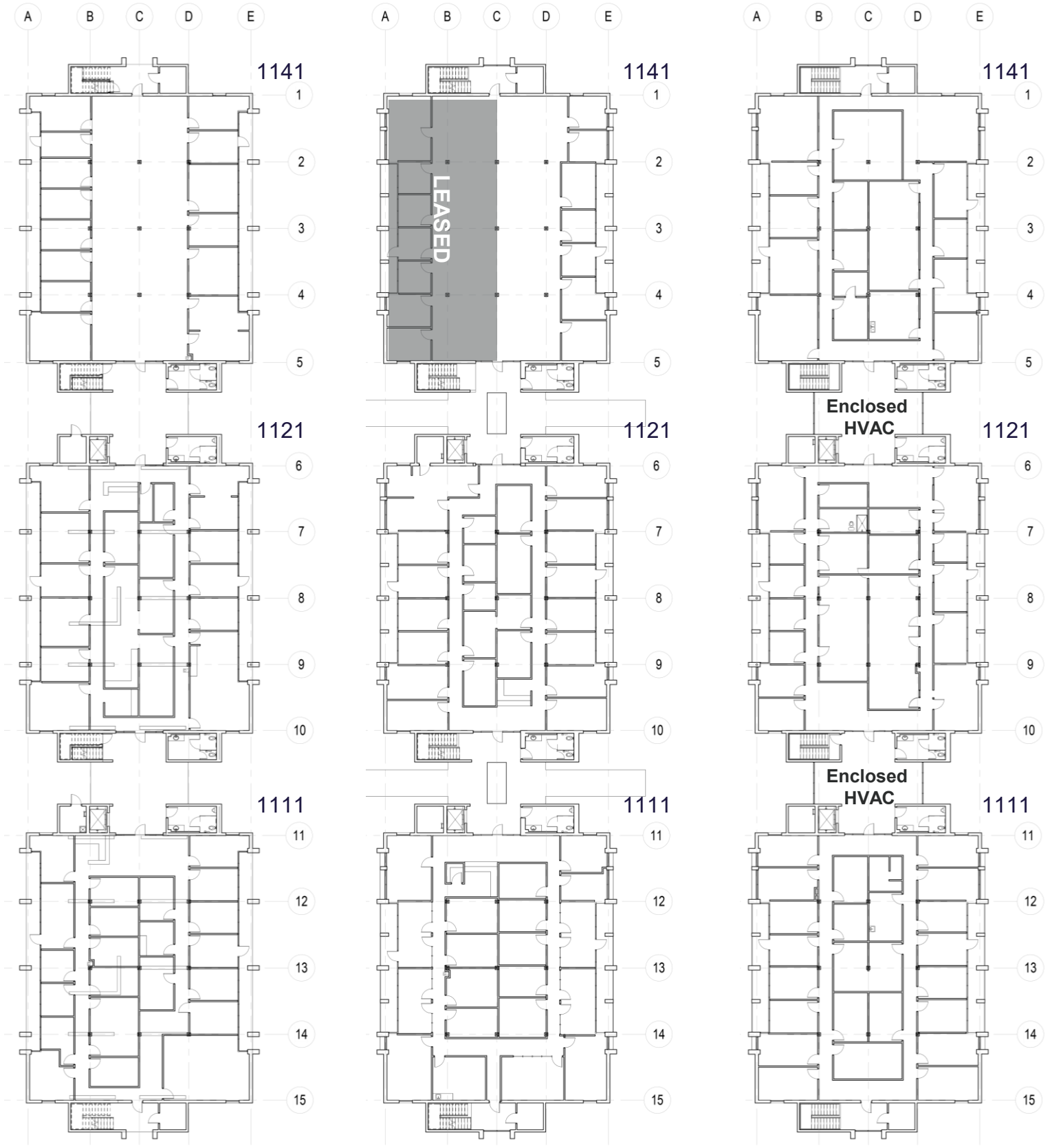
*\*Additional 1,338 SF of Common Area can be included*

**Molly Mary Gilbert**  
**Office Properties**  
 +1 520 546 2766  
[mgilbert@picor.com](mailto:mgilbert@picor.com)

**Thomas J. Nieman**  
**Principal, Office Properties**  
 +1 520 546 2728  
[tنيeman@picor.com](mailto:tنيeman@picor.com)

picor.com

### 1111-1141 N El Dorado Place



Garden Level

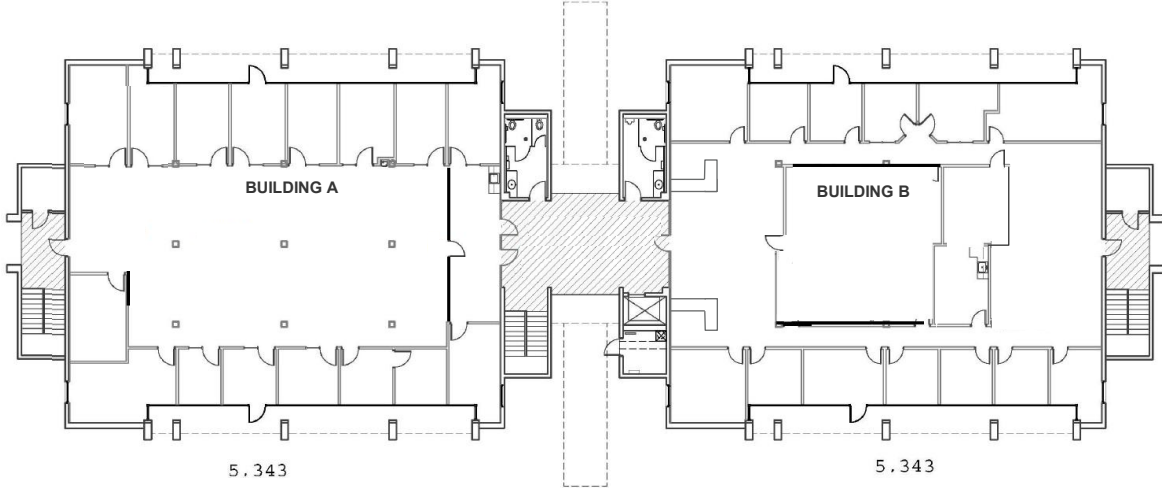
Ground Level

Second Level

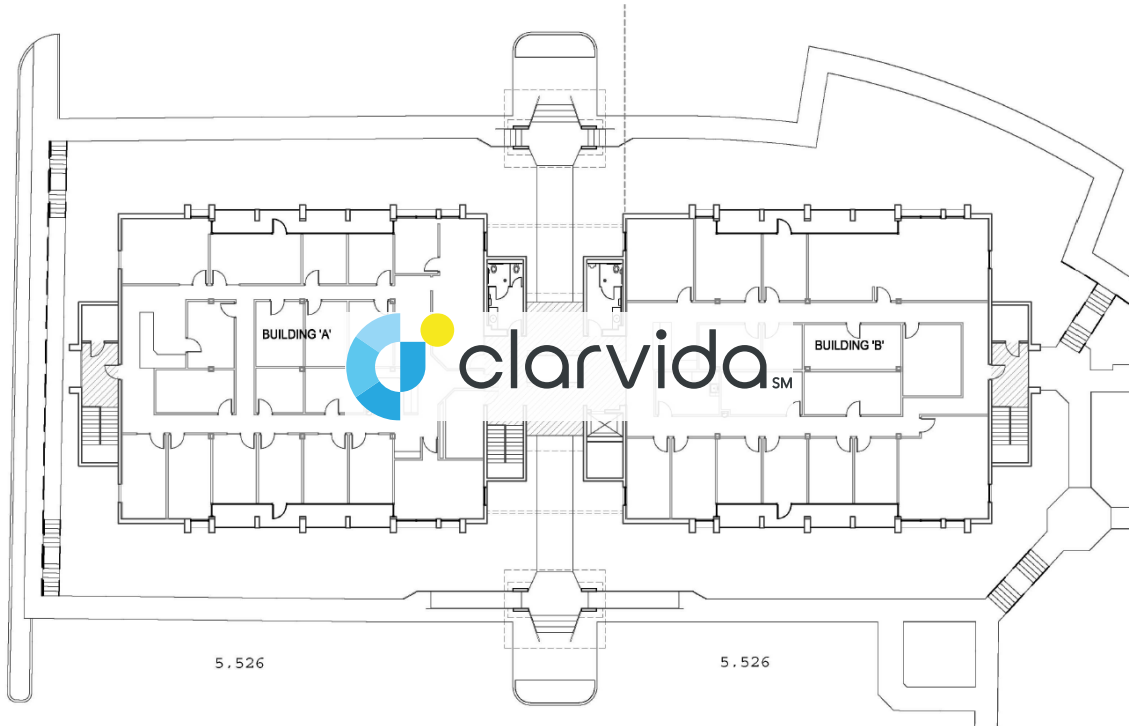


1161 - 1181 Garden Level  
5,343 - 10,686 SF

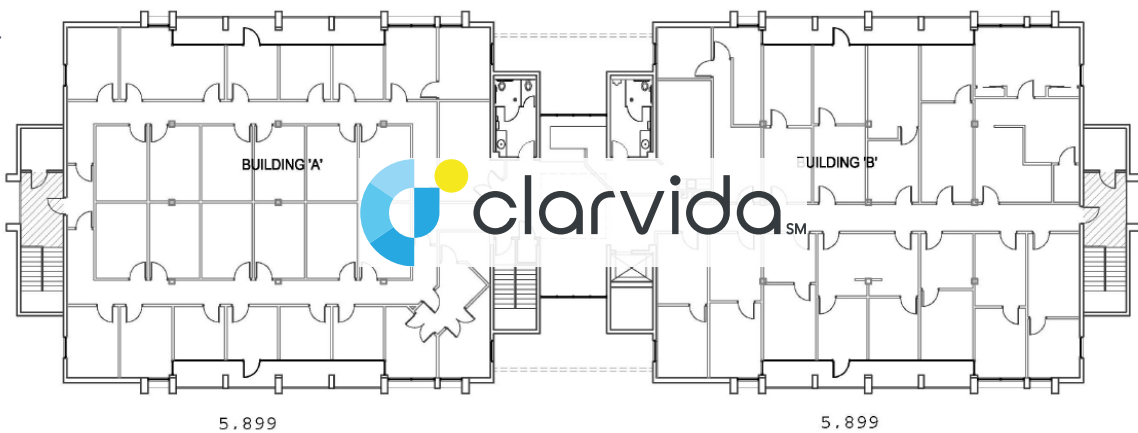
Garden



1st Floor



2nd Floor



## Property Photos



Molly Mary Gilbert  
Office Properties  
+1 520 546 2766  
[mgilbert@picor.com](mailto:mgilbert@picor.com)

Thomas J. Nieman  
Principal, Office Properties  
+1 520 546 2728  
[tنيeman@picor.com](mailto:tنيeman@picor.com)

[picor.com](http://picor.com)

# Aerial

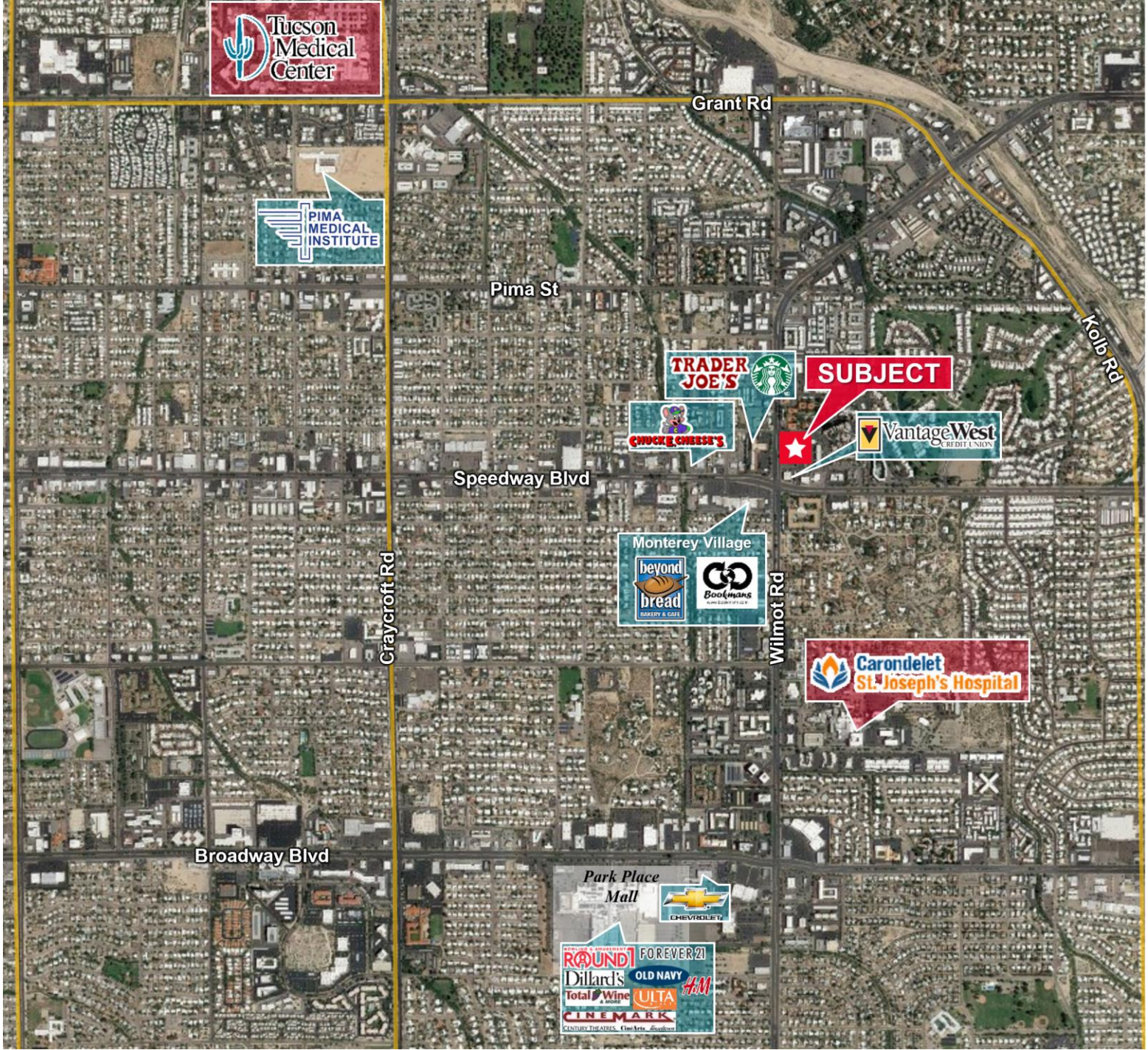


Molly Mary Gilbert  
Office Properties  
+1 520 546 2766  
[mgilbert@picor.com](mailto:mgilbert@picor.com)

Thomas J. Nieman  
Principal, Office Properties  
+1 520 546 2728  
[tنيeman@picor.com](mailto:tنيeman@picor.com)

picor.com

### Trade Map



Molly Mary Gilbert  
Office Properties  
+1 520 546 2766  
[mgilbert@picor.com](mailto:mgilbert@picor.com)

Thomas J. Nieman  
Principal, Office Properties  
+1 520 546 2728  
[tنيان@picor.com](mailto:tنيان@picor.com)

picor.com

## Tucson Market Overview



**1.08M**  
TUCSON MSA  
POPULATION



**456,600**  
TOTAL  
HOUSEHOLDS



**35%**  
COLLEGE  
EDUCATION



**1.1%**  
POPULATION  
GROWTH RATE



**\$74,400**  
MEDIAN HOUSEHOLD  
INCOME



**4.1%**  
UNEMPLOYMENT  
RATE



**56,544**  
UNIVERSITY OF ARIZONA  
TOTAL ENROLLMENT, 2025

### LARGEST EMPLOYERS

1. UNIVERSITY OF ARIZONA- 16,076
2. RAYTHEON MISSILE SYSTEMS- 13,000
3. DAVIS-MONTHAN AFB- 11,000
4. STATE OF ARIZONA - 8,580

- #2 MANAGEMENT INFORMATION SYSTEMS
- #8 SPACE SCIENCE
- #27 BEST BUSINESS SCHOOLS
- #47 MEDICINE
- #52 TOP PUBLIC SCHOOL
- #54 EDUCATION
- #69 UNDERGRAD ENGINEERING PROGRAMS
- #70 BESTCOLLEGES FOR VETERANS
- #115 GLOBAL UNIVERSITY

### RECENT INDUSTRY ARRIVALS & EXPANSIONS

1. AMAZON
2. CATERPILLAR SURFACE MINING & TECH.
3. HEXAGON MINING
4. BECTON DICKINSON
5. AMERICAN BATTERY FACTORY

Sources: BLS, BEA, Federal Reserve, Moody's Analytics, arizona.edu, suncorridorinc.com, US News & Report, Sites USA  
Cushman & Wakefield | PICOR 08/13/2025

Molly Mary Gilbert  
Office Properties  
+1 520 546 2766  
[mgilbert@picor.com](mailto:mgilbert@picor.com)

Thomas J. Nieman  
Principal, Office Properties  
+1 520 546 2728  
[tنيeman@picor.com](mailto:tنيeman@picor.com)

picor.com