



# LAKE SUCCESS BUSINESS PARK

One Hollow Lane, Lake Success



# Space Details

Class "A" Office and Medical Space  
Leasing Opportunity

## AVAILABLE SPACES\*

Suite 301A - 4,300 SF

Suite 301C - 5,400 SF

\*Build to Suit

## SITE DETAILS

- Newly renovated common areas including lobby, restrooms, and elevators
- 2-story indoor parking located beneath the building
- Exterior parking field that surrounds the building
- Parking ratio 6:1
- Updated landscaping



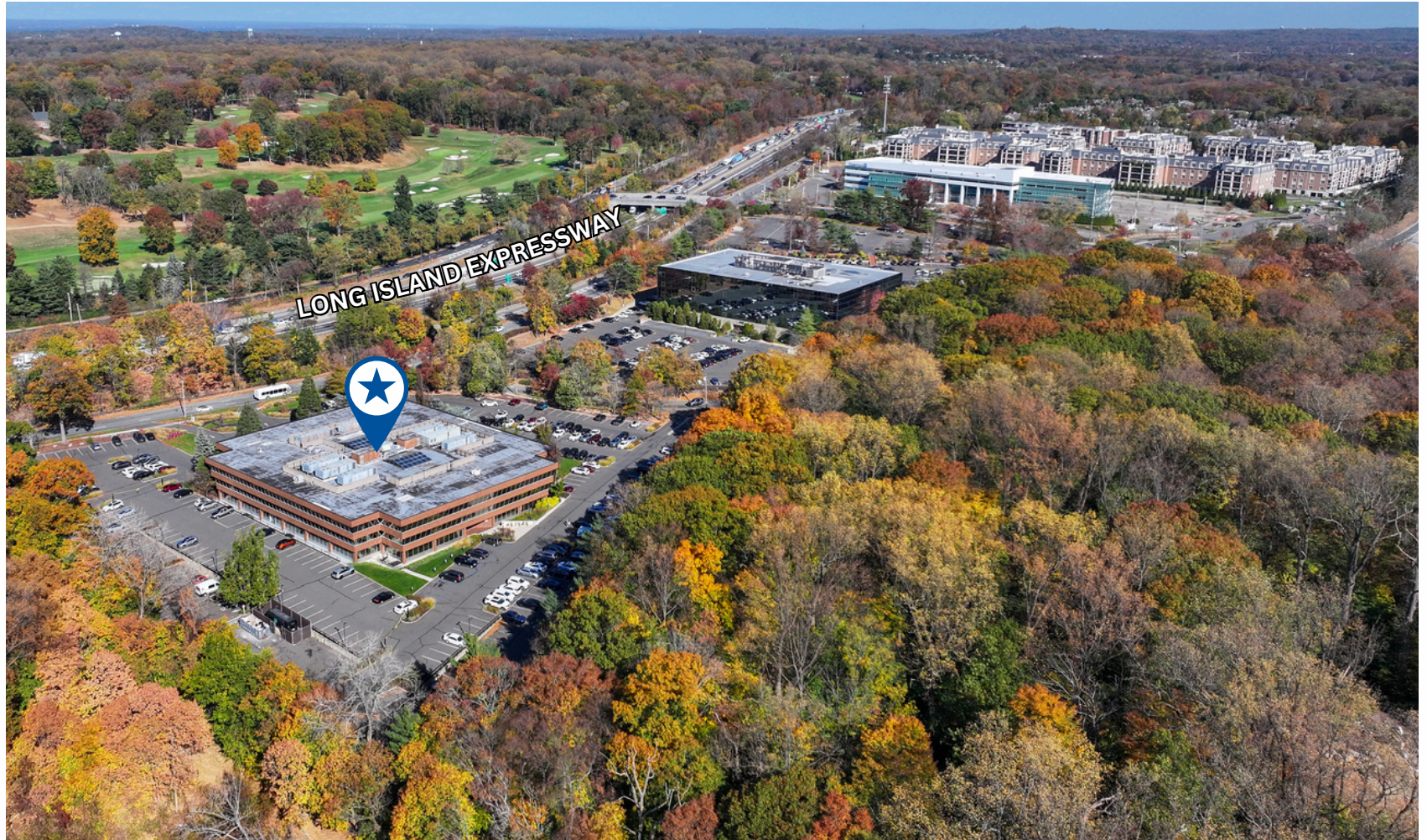
## ABOUT LAKE SUCCESS BUSINESS PARK

Lake Success Business Park is a newly-renovated office and medical building in Lake Success with approximately 120,000 SF of prime space. The building is strategically located in the Village of Lake Success, Long Island, New York, at the intersection of New Hyde Park Road and the entrances to Long Island Expressway and Northern State Parkway.

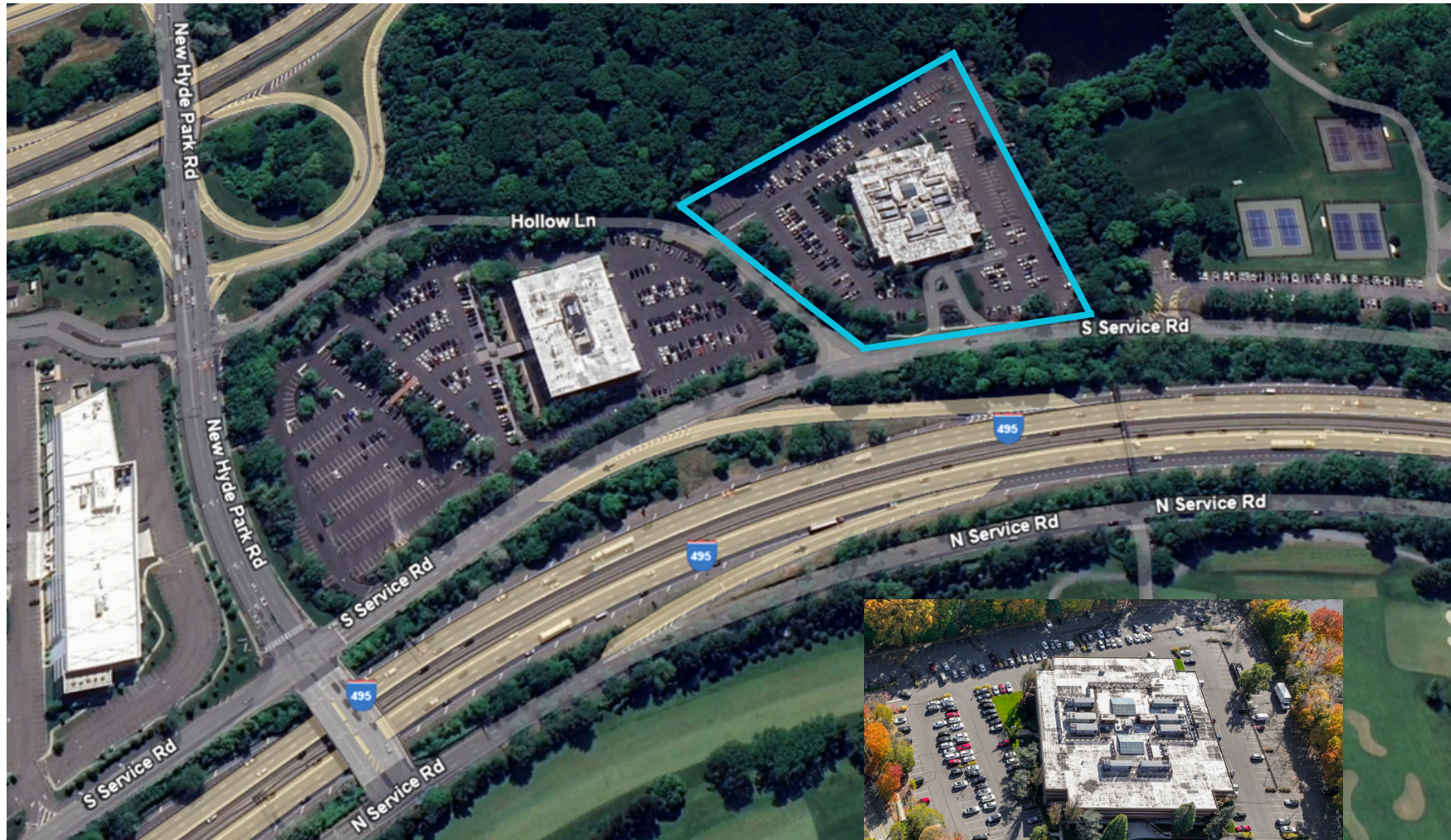
Lake Success Business Park is conveniently located within a 2-minute drive to Northwell Hospital Campus and a 7-minute drive to Cohen Children's Medical Center, providing an avenue to some of the area's most prominent names in healthcare. The property is strategically located only 20 miles to Manhattan and John F. Kennedy International Airport can be reached in under 30 minutes.



# Aerial Map



# Parking Overview

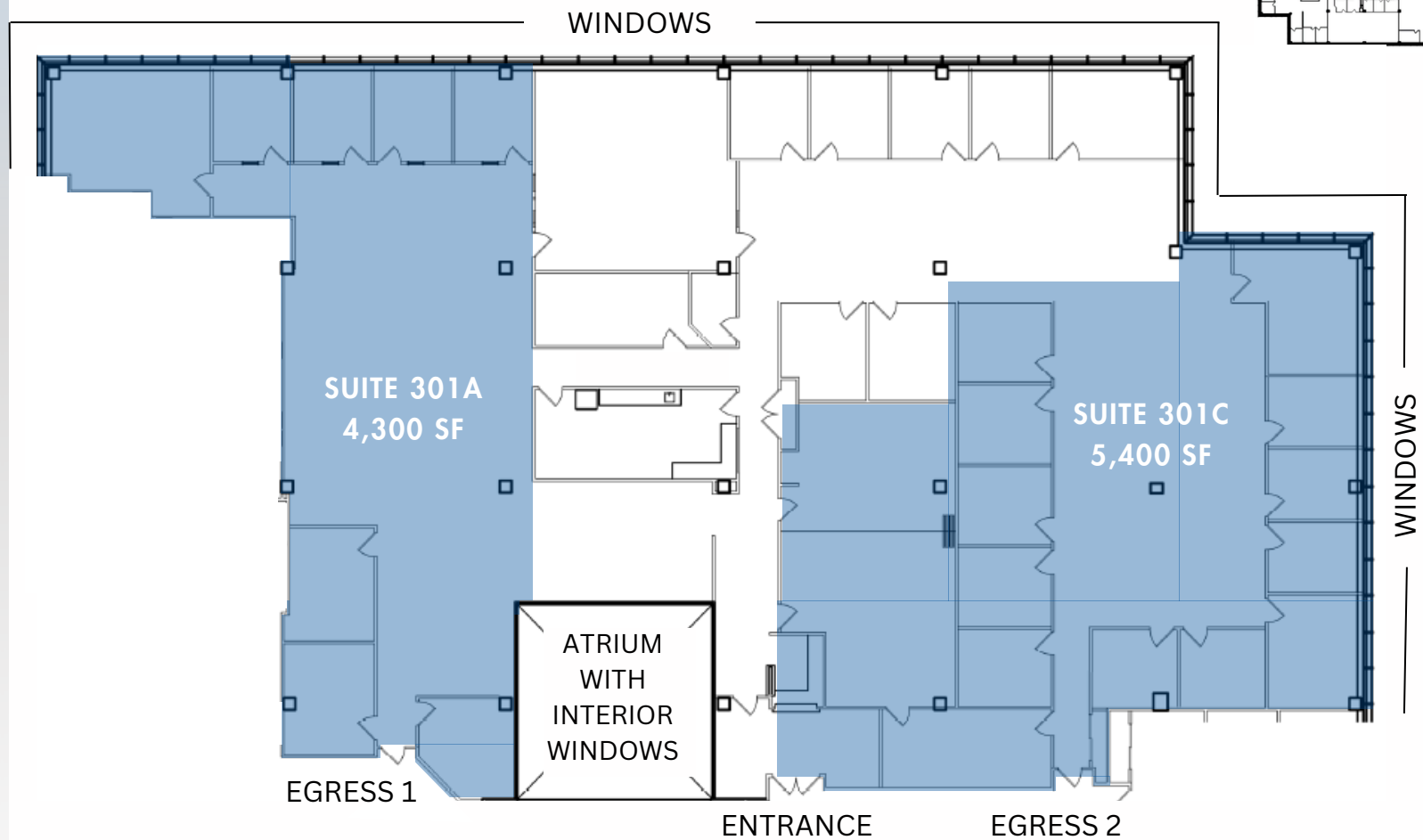
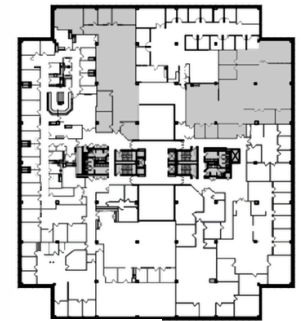


# Floor Plans

## SUITE 301A & 301C

9,700 SF TOTAL

KEY PLAN



WINDOWS

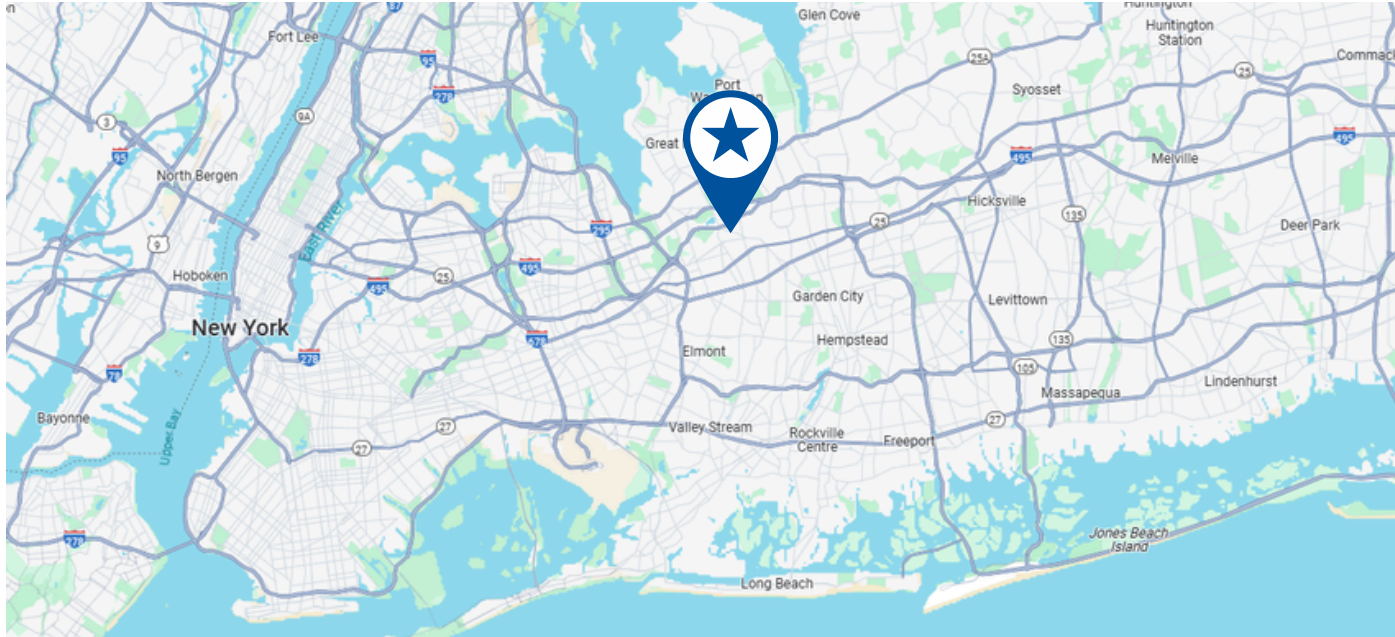
EGRESS 1

ENTRANCE

EGRESS 2

# Interior Common Area Photos









## CONTACT US

Contact us now to schedule a tour or  
learn more about our available suites

JASON MILLER

 516.662.2210  
516.465.0009  
 [jmiller@steelequities.com](mailto:jmiller@steelequities.com)

CHRISTIAN MAZZIE

 631.559.7838  
516.465.0138  
 [cmazzie@steelequities.com](mailto:cmazzie@steelequities.com)