

# Mustang South Flex Industrial

MC GEE COMMERCIAL REAL ESTATE

1140 & 1160 S Sara Rd, Mustang, OK 73064



## Property Information

Building Size:	22,764 SF
Availability:	3,037 SF NNN
Lease Type:	NNN
Rate:	\$11.25 PSF
Net Expenses:	Estimated @ 2.91 PSF

## Property Highlights

- Newly Constructed Flex Industrial
- Located in a well-traveled commercial corridor
- Suites include 200-amp electrical panel, heated warehouse and office build-out
- Pylon sign available for additional visibility off Hwy 4

## Availability

- Suite 202: Leased
- Suite 206: Lease
- Suite 210: Leased
- Suite 214: Leased
- Suite 402: Leased
- Suite 406: Lease
- Suite 410: Leased
- Suite 414: 3,037 SF (550 SF Office)

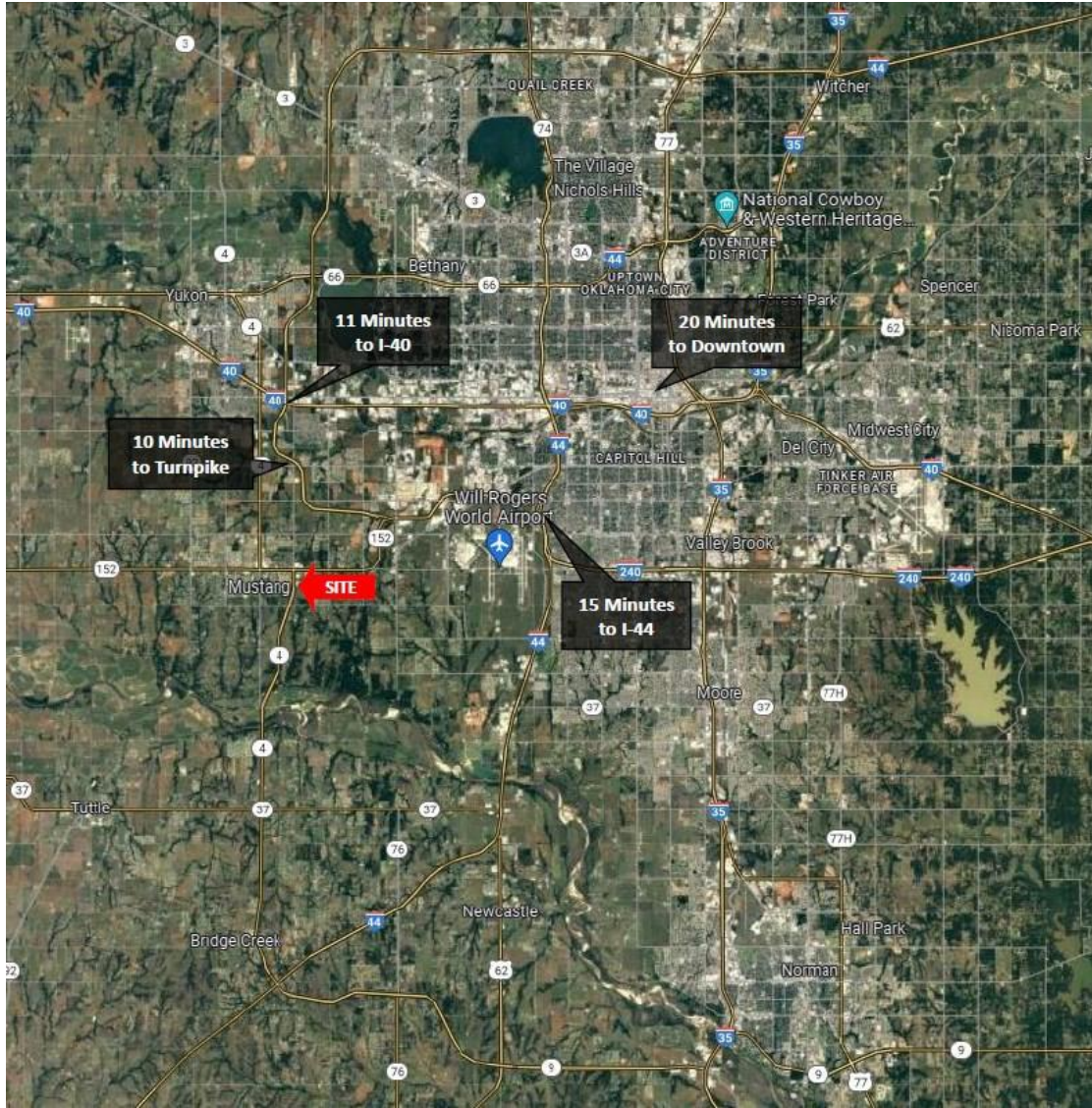


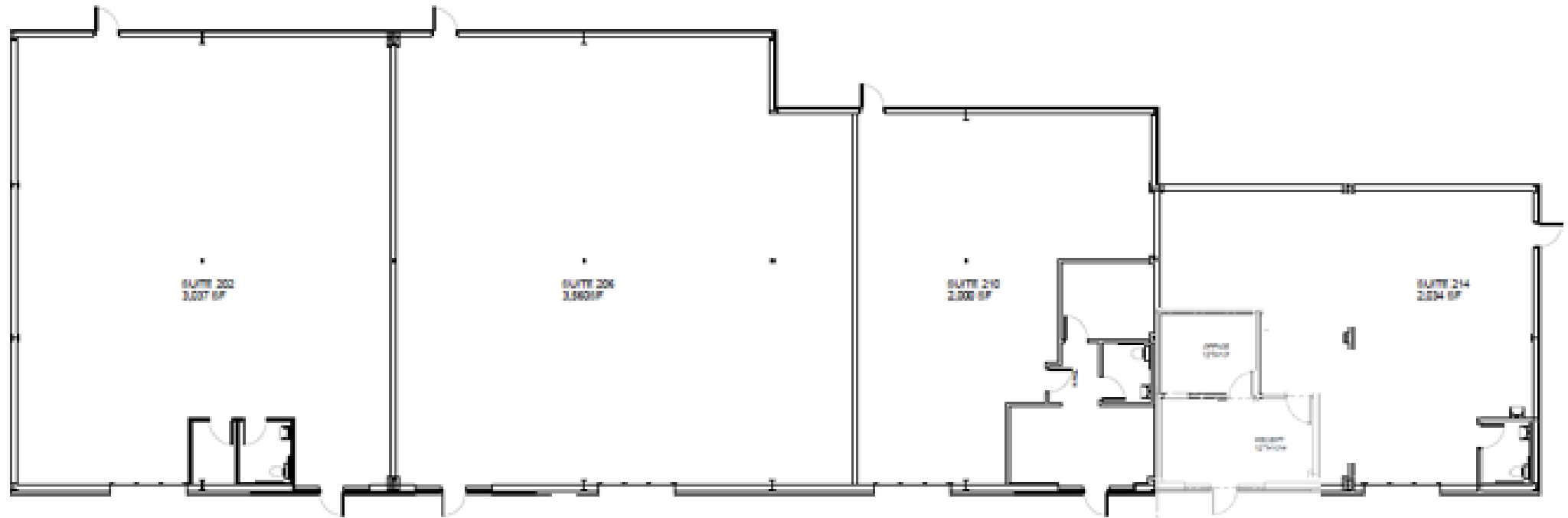
Eric Williams

[ewilliams@mcgeecre.com](mailto:ewilliams@mcgeecre.com)  
(405) 819-1638

McGee Commercial Real Estate

4324 Grant Blvd  
Yukon, OK 73099

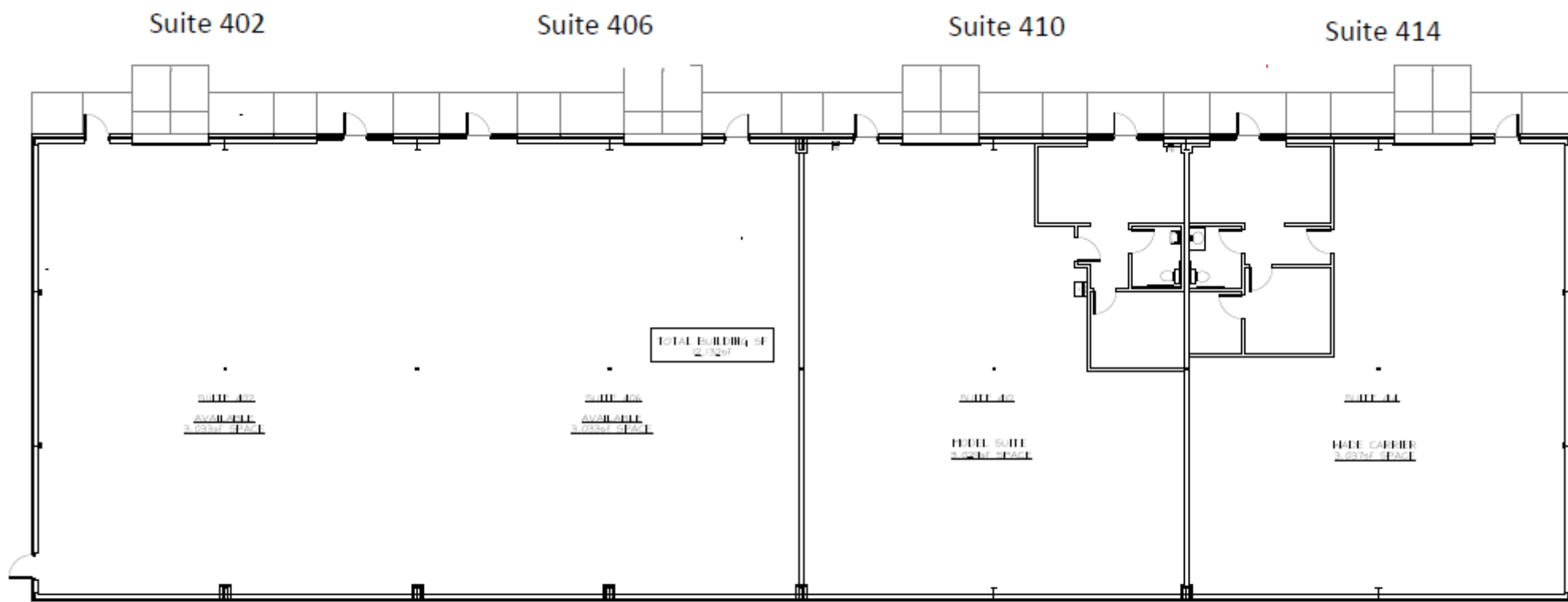




OVERALL FLOOR PLAN - BUILDING C

SCALE - 1/4" = 1'-0"





OVERALL FLOOR PLAN = BUILDING D

SCALE = 1/8" = 1'-0"







