

45 IVY AVE W
ST. PAUL, MN



MONARCH

COMMERCIAL REAL ESTATE



FOR LEASE:
INDUSTRIAL

3,817 SF

KYLE KALIVODA

DIRECTOR

KYLE@MONARCHCRE.COM

763 242 8127

BEN JENSEN

PRINCIPAL

BEN@MONARCHCRE.COM

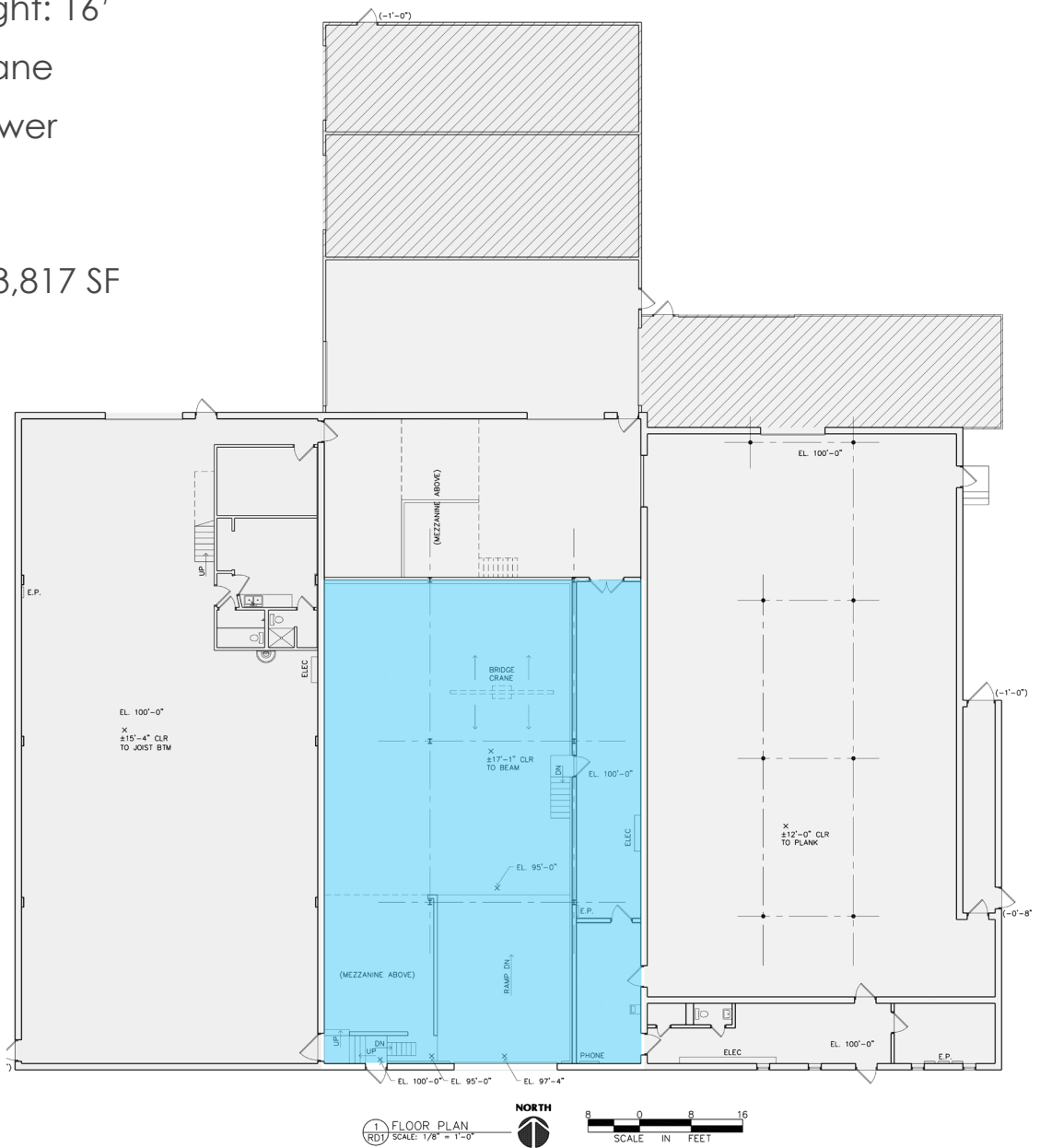
612 999 5339

MONARCHCRE.COM

SUITE B HIGHLIGHTS:

- Drive-In: 14' x 16'
- Clear Height: 16'
- Bridge Crane
- Ample Power

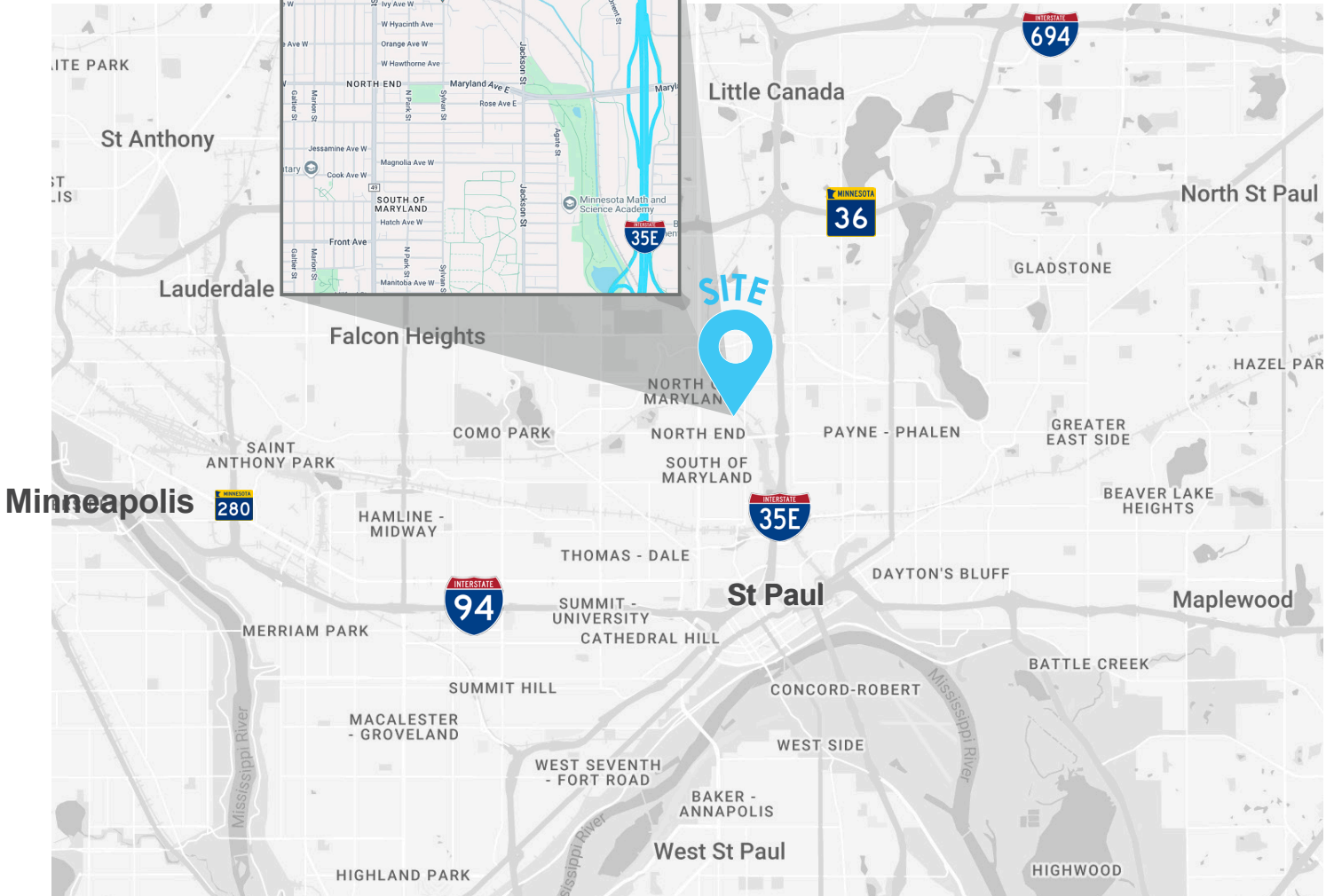
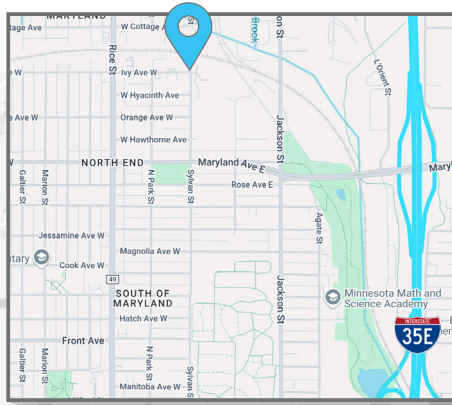
■ Suite B: 3,817 SF



KYLE KALIVODA
 DIRECTOR
 KYLE@MONARCHCRE.COM
 763 242 8127

BEN JENSEN
 PRINCIPAL
 BEN@MONARCHCRE.COM
 612 999 5339

Easy access to I-35E



KYLE KALIVODA

DIRECTOR

KYLE@MONARCHCRE.COM

763 242 8127

BEN JENSEN

PRINCIPAL

BEN@MONARCHCRE.COM

612 999 5339

MONARCHCRE.COM