

FOR SALE or LEASE | RETAIL/COMMERCIAL

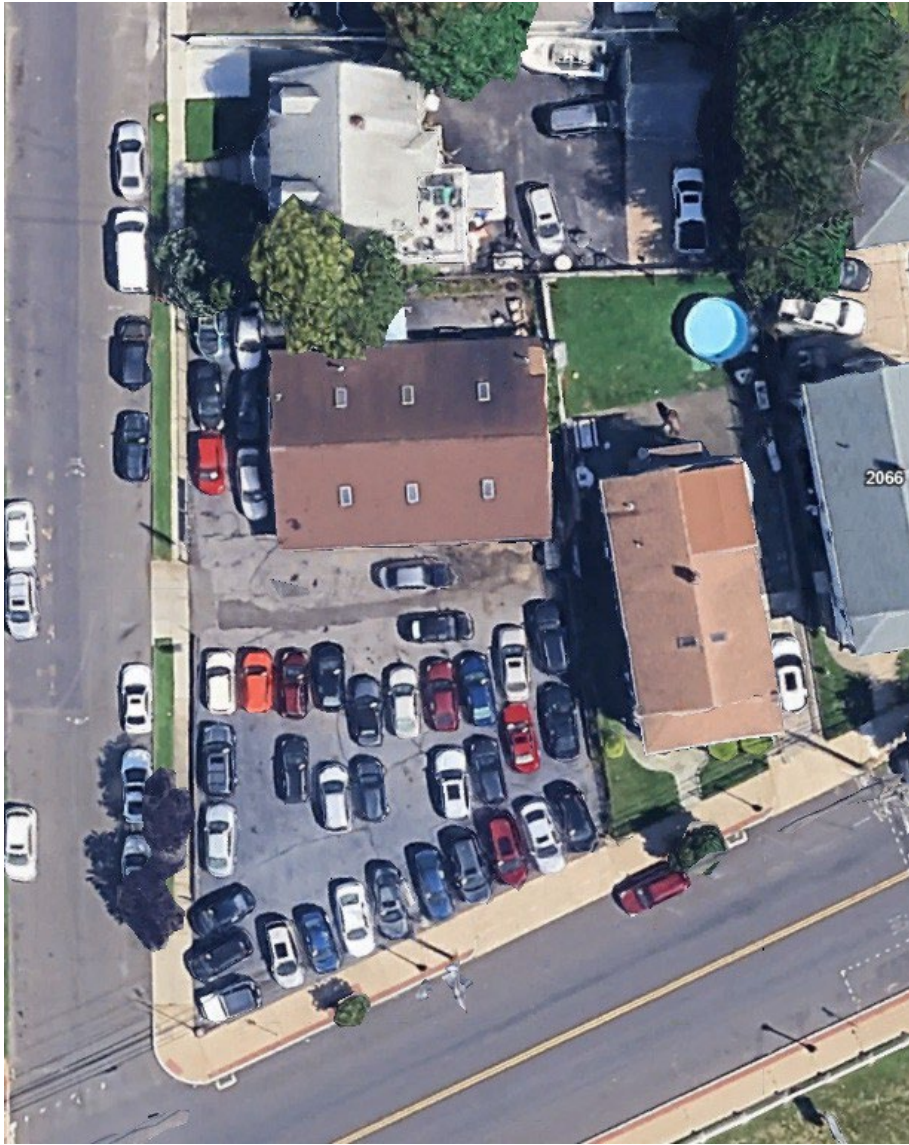
AUTO SALES / SERVICE & REPAIR

2100 BARNUM AVE,
STRATFORD



Chris O'Hara
Senior Vice President
Coldwell Banker Commercial
(203)831-4187 O | (203)257-0032 C
Email: cohara@coldwellbanker.com

2100 Barnum Ave, Stratford



Size: 2204 SF
Doors: 3 Bays with 8 x 8 Roll-Up Door
Lift: One lift
Land: .26 Acres
Zone: CA Retail/Commercial - Service Repair, Car Sales, Food Service/Restaurant
Taxes: \$4.28/SF
Sale: \$775,000
Lease: \$7,000 per month



Chris O'Hara
Senior Vice President
Coldwell Banker Commercial
(203)831-4187 O | (203)257-0032 C
Email: cohara@coldwellbanker.com

2100 Barnum Ave, Stratford CT



Chris O'Hara
Senior Vice President
Coldwell Banker Commercial
(203)831-4187 O | (203)257-0032 C
Email: cohara@coldwellbanker.com