



34 E. Lancaster Avenue

Shillington, PA 19607

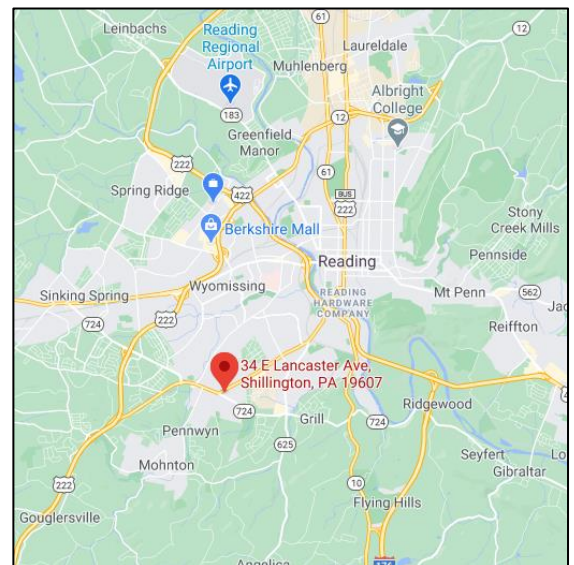
Property Highlights

- 12 parking spaces in a private lot
- Move-in ready space
- Affordable rate
- Flexible lease terms
- Nearby amenities

For more information:

Kyle A. McKechnie

610 370 8522 • kmckechnie@naikeystone.com



For Lease
34 E. Lancaster Ave
Shillington, PA 19607

Overview/ Property Description



This mixed-use property is located in the heart of Shillington, PA. The property includes a 15-car parking lot on 0.25 acres. 3 apartments are located on the 2nd and 3rd floors. Office space is in excellent condition and was recently renovated. The space is spread across the first floor and a finished lower level. Lower-level space has direct access from front of the building and does have windows.

Space Description

Space Size (SF):	3,202 SF -1,932 SF on 1 st floor -1,270 SF on lower level
Acreage:	0.25 acres
Municipality:	Shillington Borough
Zoning:	Commercial
HVAC:	Gas fired hot-water system and central air-conditioning
Water/Sewer:	Public
Restrooms:	Yes, two located on 1 st floor
Parking:	15 spaces in lot. 12 are available to the commercial space.
Rental Rate:	Inquire for pricing details

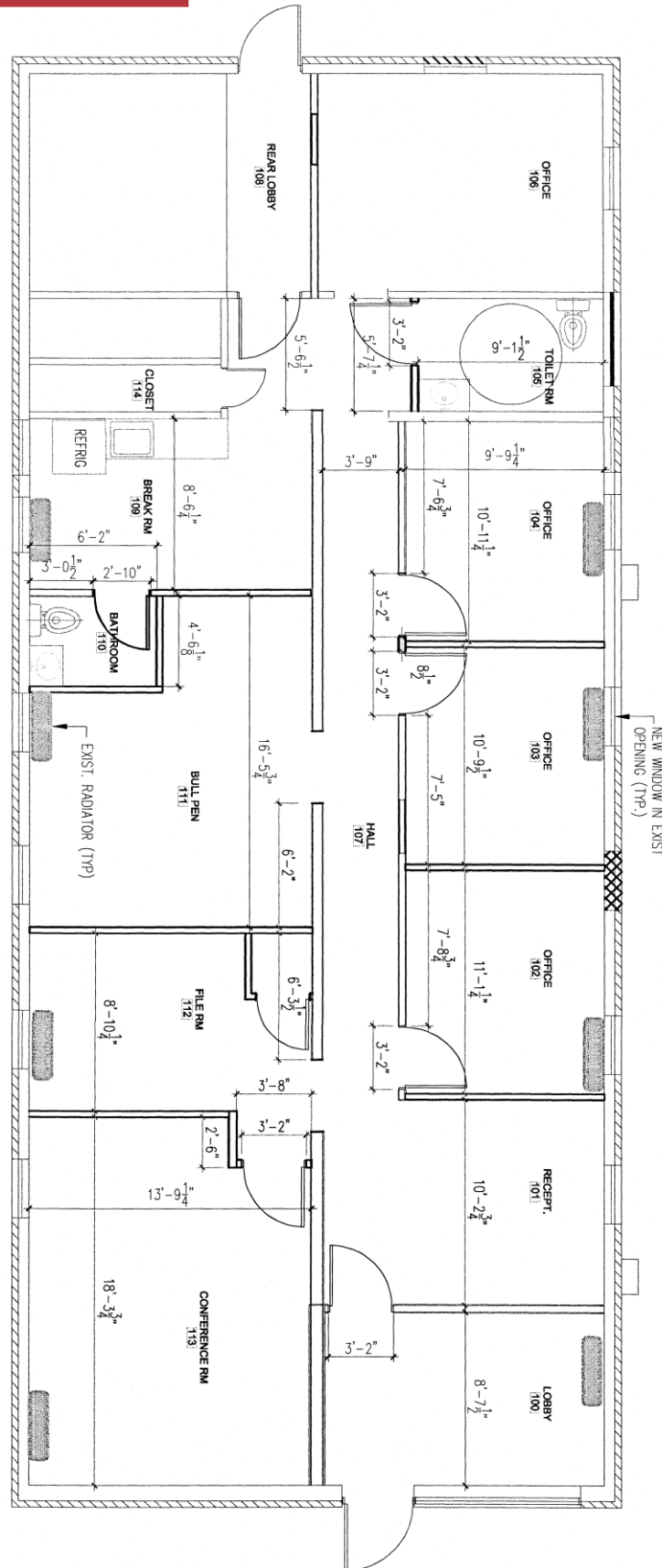
For Lease
34 E. Lancaster Ave
Shillington, PA 19607

Photos



For Lease
34 E. Lancaster Ave
Shillington, PA 19607

First floor floorplan



NAIKeystone

875 Berkshire Blvd, Suite 102
Wyomissing, PA 19610
+1 610 779 1400
naikeystone.com

For more information:

Kyle McKechnie
610 370 8522 • kmckechnie@naikeystone.com