

**RETAIL
SPACE** **FOR LEASE**

**238 AND 240
GRAHAM AVE**

**EAST WILLIAMSBURG
BROOKLYN, NY 11206**

CONTACT

Greg Parassio
greg@boothst.com
201-615-8730





**238 AND 240 GRAHAM AVE,
EAST WILLIAMSBURG, BROOKLYN, NY 11206**

ABOUT THE LOCATION

PROPERTY HIGHLIGHTS

SIZE

Space A - 1,500 SF (The corner space 238)

Space B - 900 SF (The inline space 240)

NOTES

- 2400 SF (divisible)
- Steps from Graham Ave "L" Train stop
- Within 1/2-mile radius, there are 48,000 people with average annual household income of \$121K...there are 33,000 daytime employees
- At base of Williamsburg Houses
- 48,000 residents with average annual household income of \$121K within .5 mile radius
- 33,000 Day Time Employees within .5 Mile Radius

NEIGHBORING RETAILERS

Absolute Power Fitness

C-Town

Bravo

Foodtown

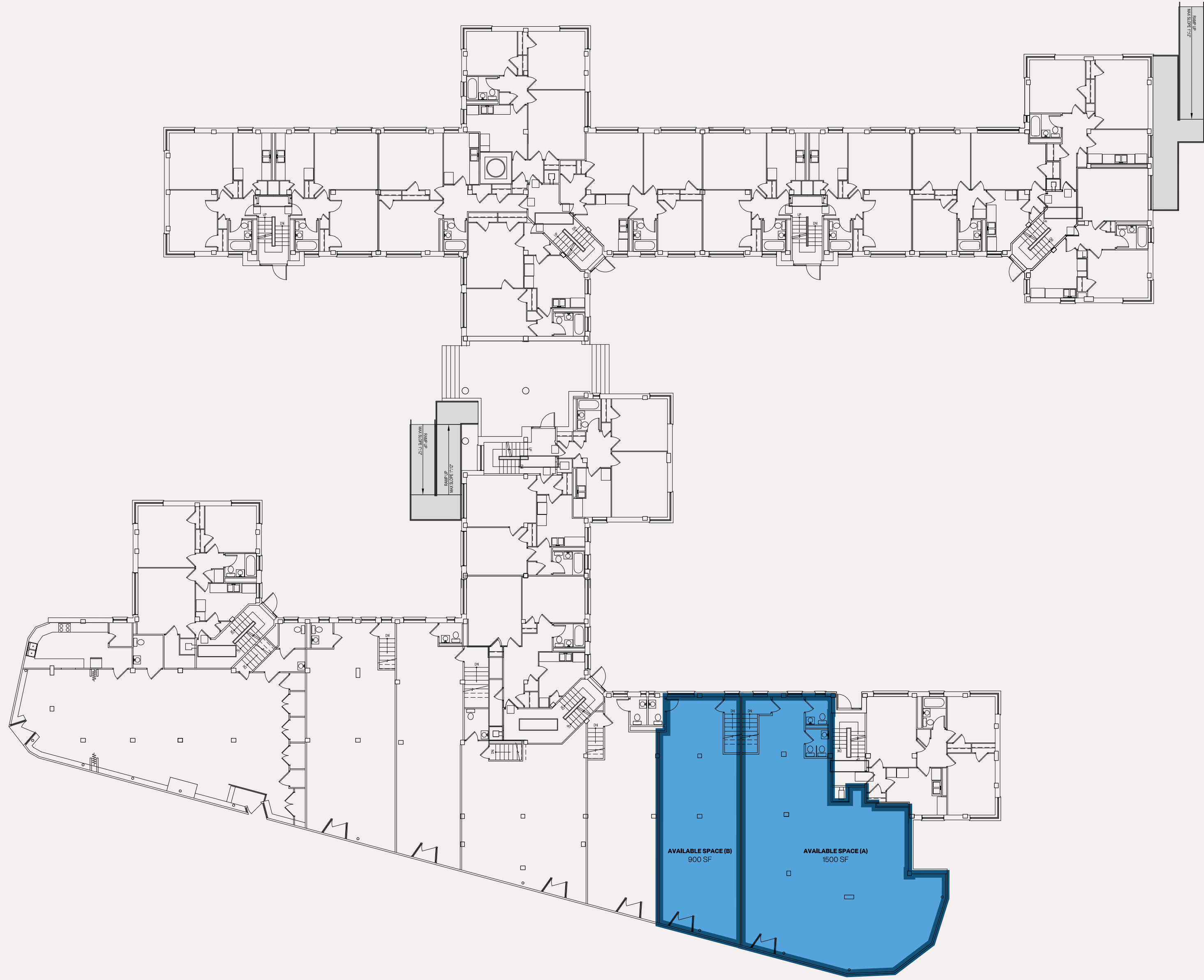
Ozzie's Fresh Market

Brooklyn Harvest

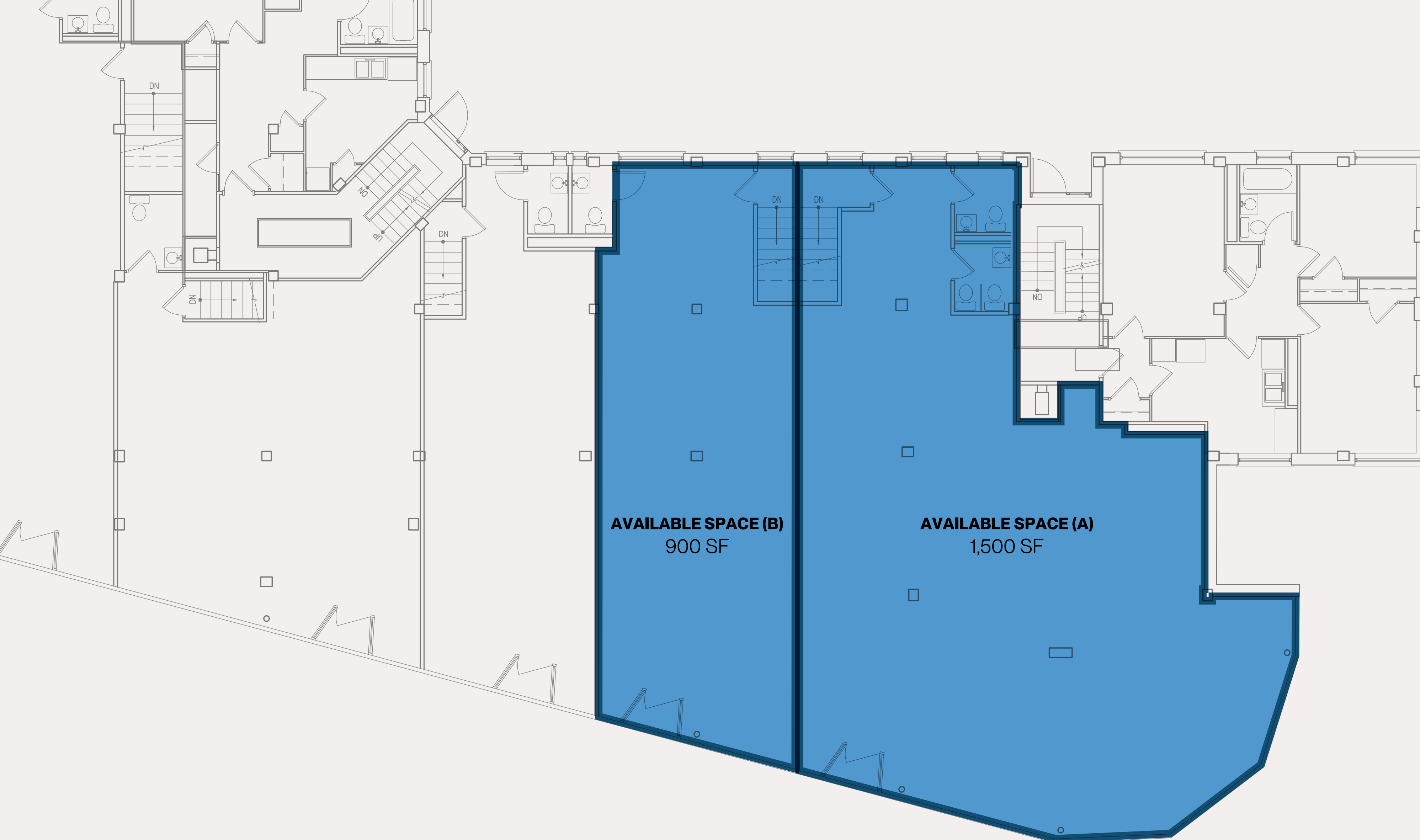
McDonald's

Verizon

Chase

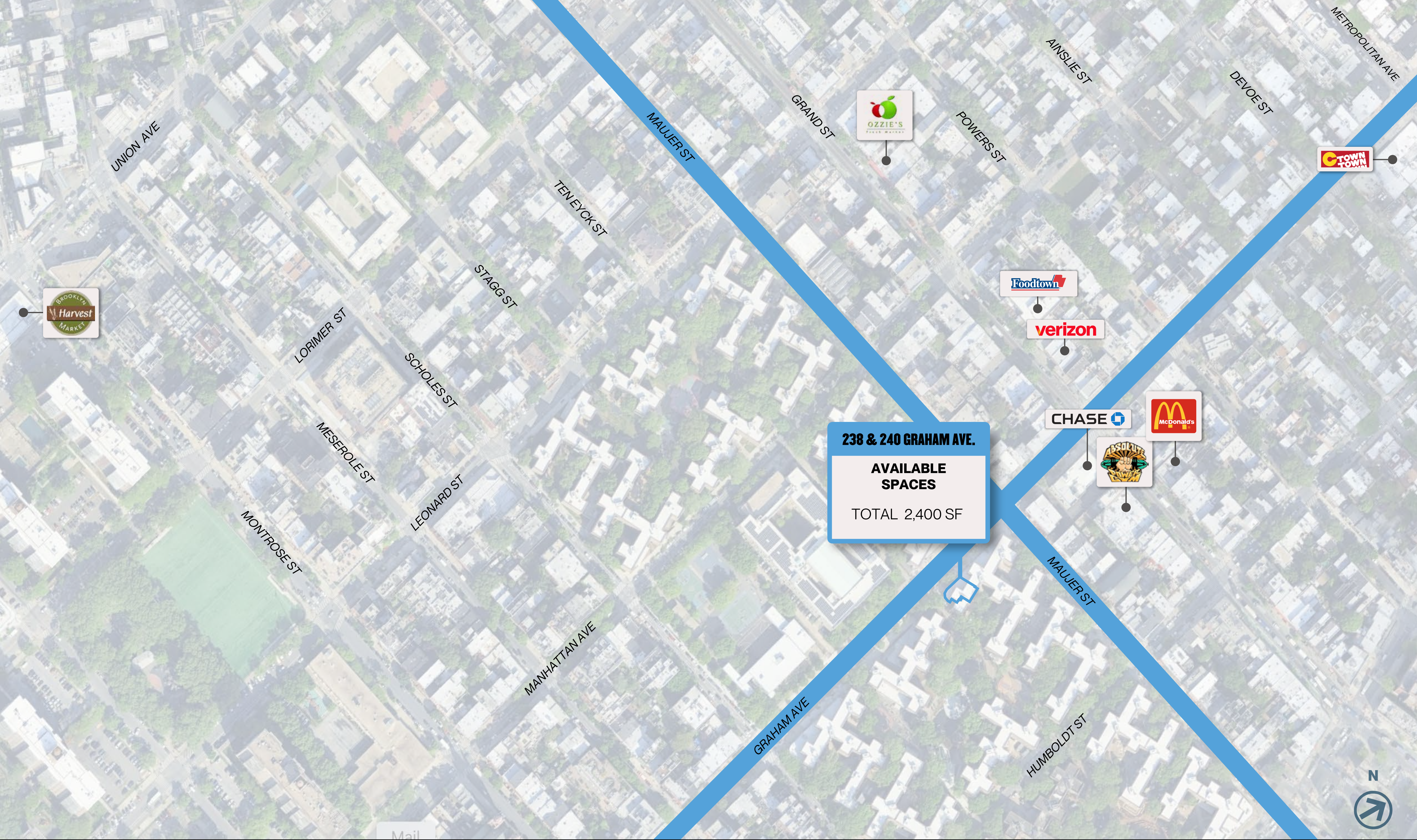


-  NEIGHBORING RETAILERS
-  AVAILABLE SPACES



-  NEIGHBORING RETAILERS
-  AVAILABLE SPACES

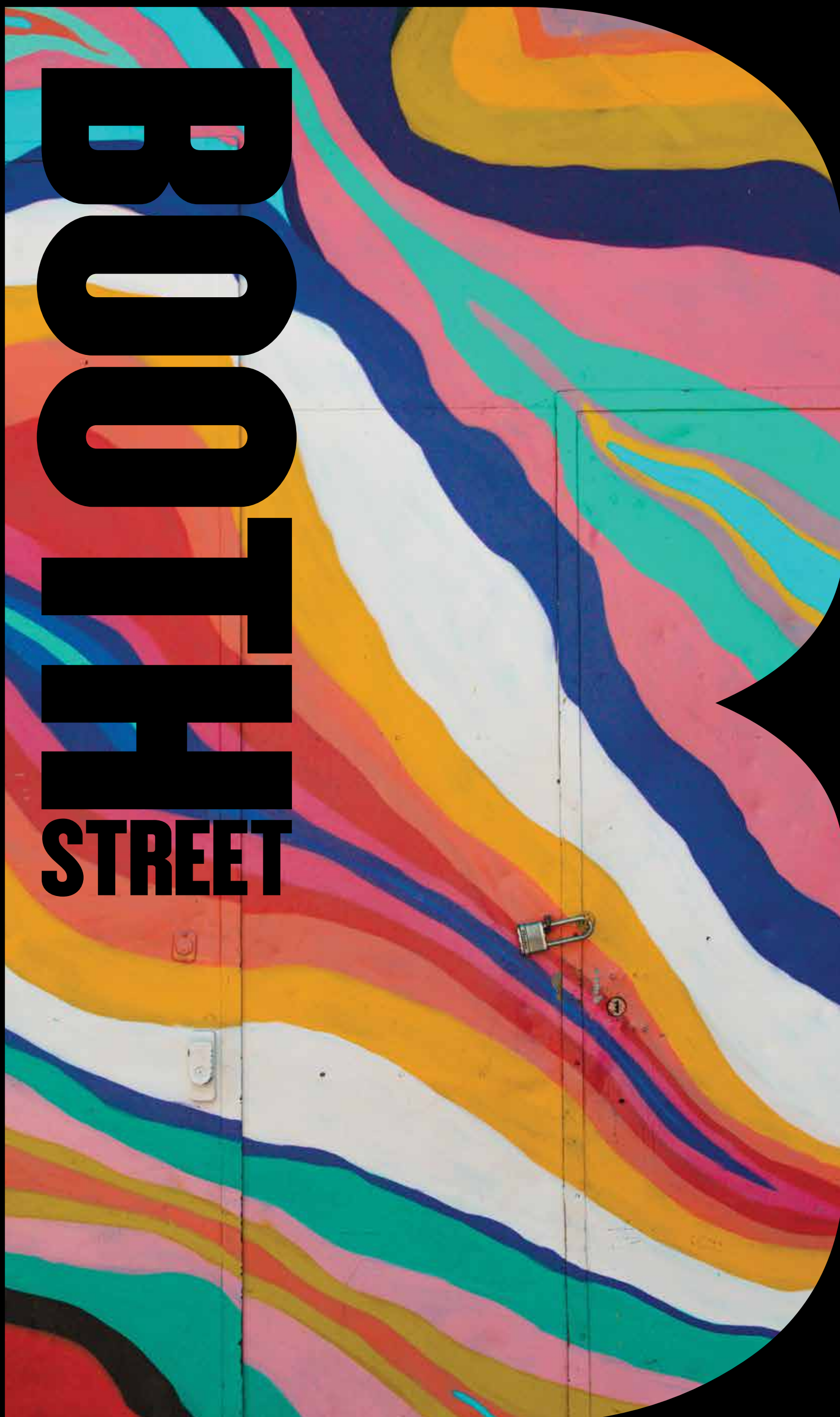




-  PROPERTY AREA
-  NEIGHBORING RETAILERS

238 & 240 GRAHAM AVE.
AVAILABLE SPACES
 TOTAL 2,400 SF





**BOOTH
STREET**

CONTACT

**GREG PARASSIO
GREGP@BOOTHST.COM
201-615-8730**